



GreenGate  
MANCHESTER

*live*  
GreenGate





# GreenGate

MANCHESTER

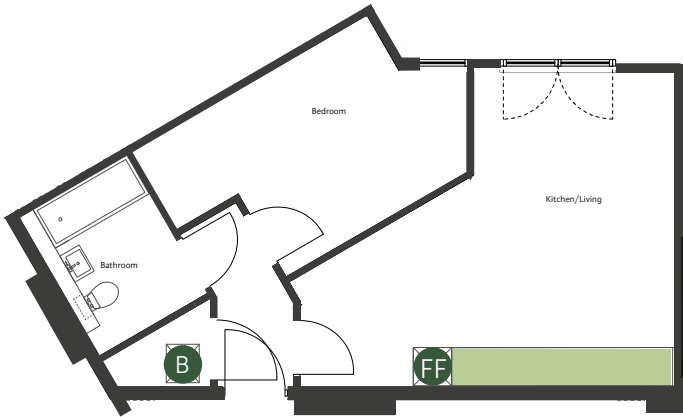
GreenGate Manchester is the first contemporary private rented scheme of its kind outside London, offering exclusive city living that puts you at its heart. All residents benefit from 24 hour on-site support, provided by GreenGate's dedicated service team, from maintenance and tenancy advice to parcel collection and postal services.

The extensive range of communal facilities including on-site gymnasium, landscaped courtyard, Residents' Lounge, flexible parking and family and friends guest suite, provide a standard of living that you won't find anywhere else in the city.

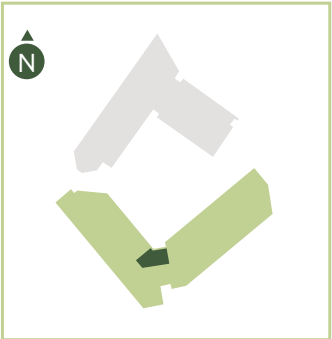


# ONE BEDROOM APARTMENTS

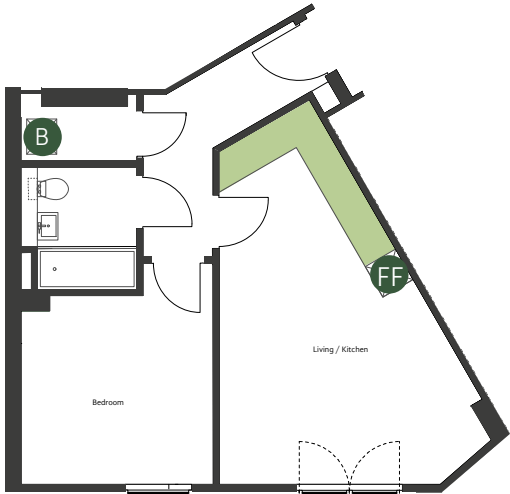
## One Bedroom Apartment



Total Area (NSA)  
45.13 sqm  
486 sqft



TYPE BB		Block B	
Apartment		Level	
B214		2	
B314		3	
B414		4	
B514		5	
B614		6	
B714		7	
B814		8	
B914		9	
B1014		10	
B1114		11	



Total Area (NSA)  
47.06 sqm  
507 sqft



TYPE BC		Block B	
Apartment		Level	
B106		1	

Kitchen Work Surface

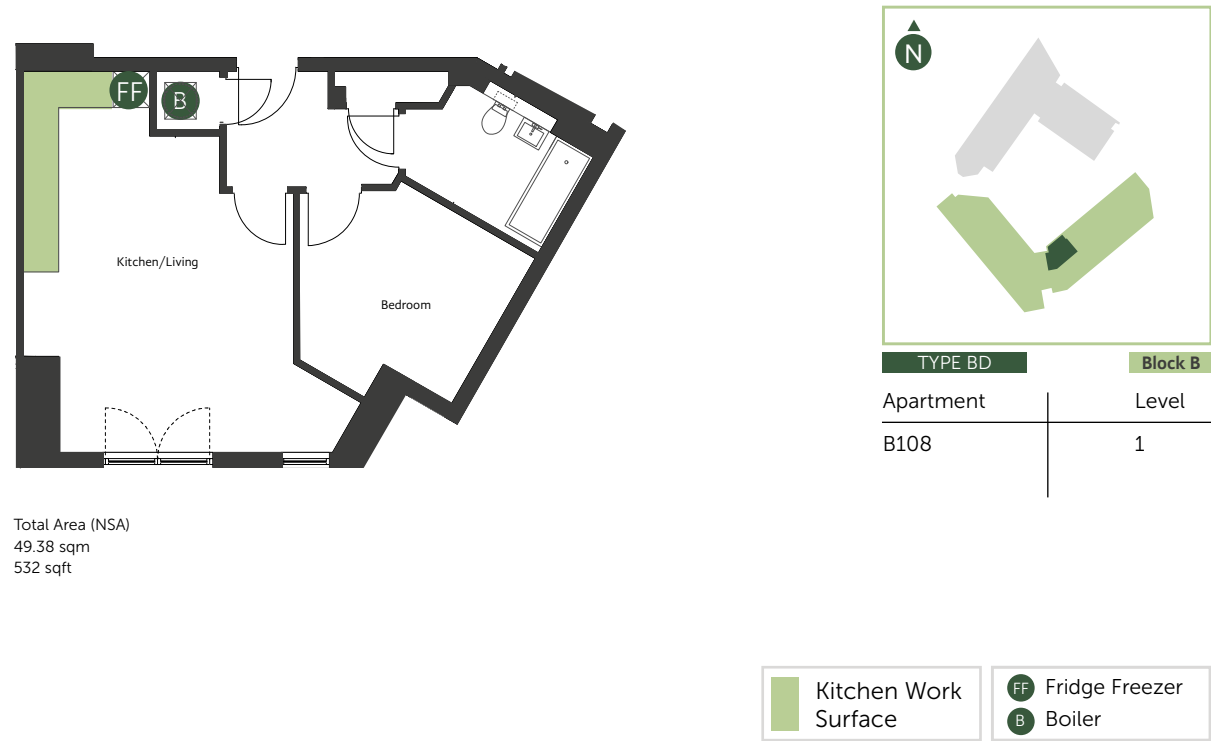
FF

Fridge Freezer

B

Boiler

# One Bedroom Apartment



Total Area (NSA)  
49.38 sqm  
532 sqft

## TWO BEDROOM APARTMENTS

*live*  
**GreenGate**

One, two and three bedroom  
apartments available for rent

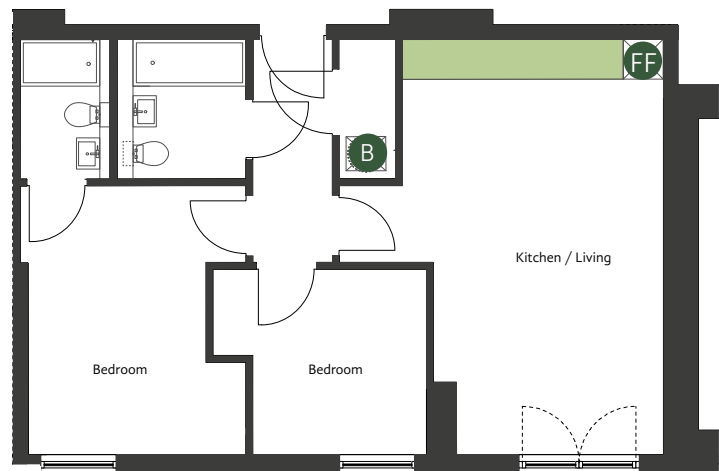
CALL NOW 0161 238 7400

[livegreengate.com](https://livegreengate.com) [twitter.com/livegreengate](https://twitter.com/livegreengate) [facebook.com/livegreengate](https://facebook.com/livegreengate)

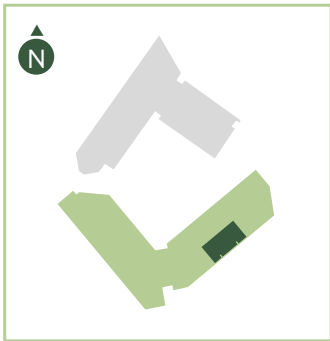
GreenGate Manchester, Greengate, Salford M3 7ND



Two Bedroom Apartment

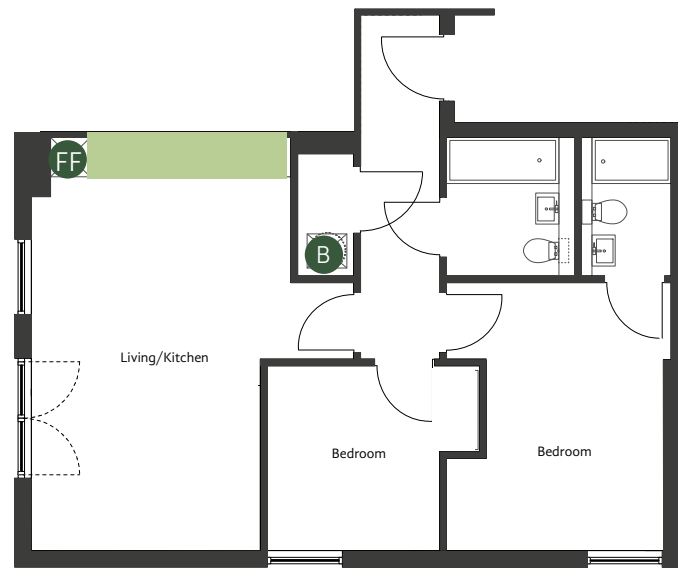


Total Area (NSA)  
60.99 sqm  
656 sqft

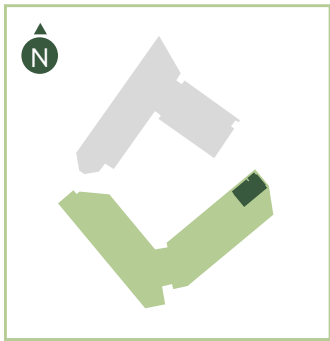


TYPE BA Block B

Apartment	Level
B101	1
B201	2
B301	3
B401	4
B501	5
B601	6
B701	7
B801	8
B901	9
B1001	10
B1101	11
B1201	12
B1301	13
B1401	14
B1501	15
B1601	16
B1701	17
B1801	18



Total Area (NSA)  
63.42 sqm  
683 sqft



TYPE BB Block B

Apartment	Level	Apartment	Level
B102	1	B1102	11
B202	2	B1202	12
B302	3	B1302	13
B402	4	B1402	14
B502	5	B1502	15
B602	6	B1602	16
B702	7	B1702	17
B802	8	B1802	18
B902	9		
B1002	10		

Kitchen Work Surface

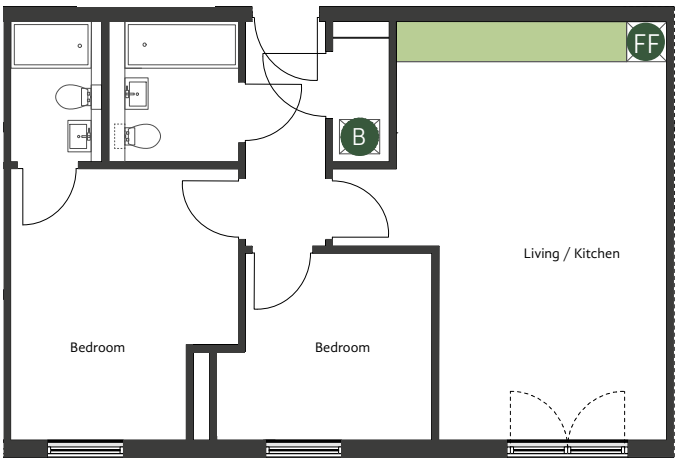
FF

Fridge Freezer

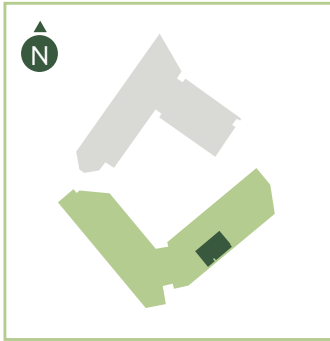
B

Boiler

Two Bedroom Apartment

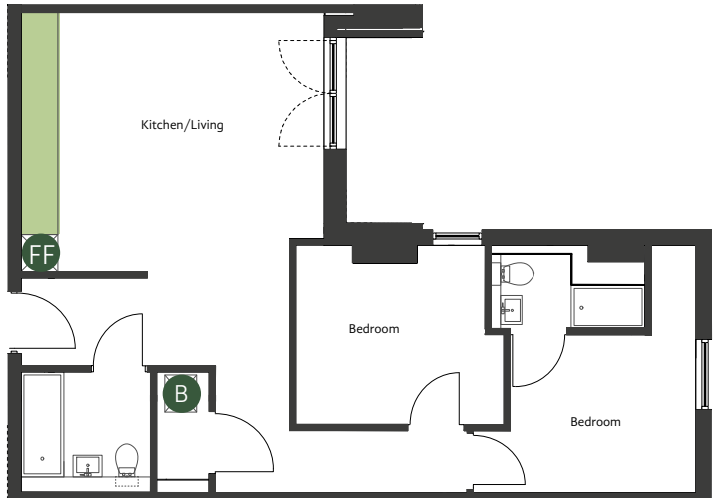


Total Area (NSA)  
61.78 sqm  
665 sqft



TYPE BC Block B

Apartment	Level
B104	1
B204	2
B304	3
B404	4
B504	5
B604	6
B704	7
B804	8
B904	9
B1004	10
B1104	11
B1204	12
B1304	13
B1404	14
B1504	15
B1604	16
B1704	17
B1804	18



Total Area (NSA)  
62.88 sqm  
677 sqft



TYPE BD Block B

Apartment	Level
B207	2
B307	3
B407	4
B507	5
B607	6
B707	7
B807	8
B907	9
B1007	10
B1107	11

Kitchen Work Surface

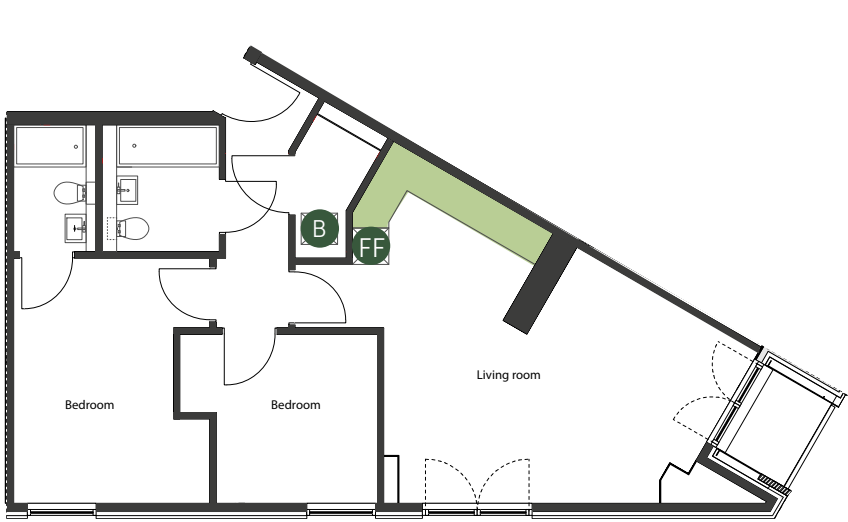
FF

Fridge Freezer

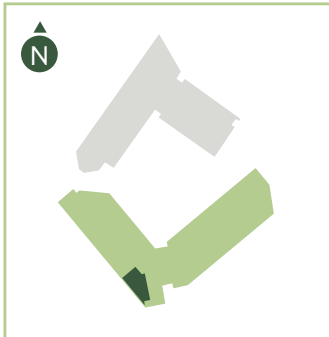
B

Boiler

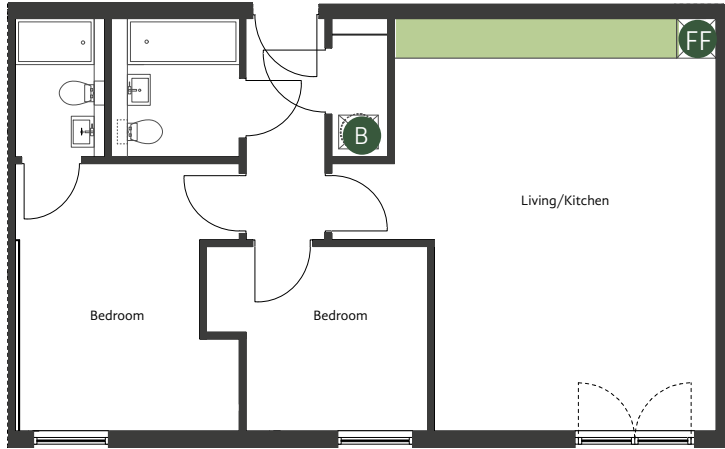
# Two Bedroom Apartment



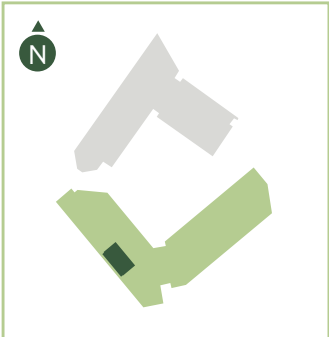
Total Area (NSA)  
64.79 sqm  
697 sqft



TYPE BE		Block B
Apartment	Level	
B208	2	
B308	3	
B408	4	
B508	5	
B608	6	
B708	7	
B808	8	
B908	9	
B1008	10	
B1108	11	



Total Area (NSA)  
66.87 sqm  
720 sqft



TYPE BF		Block B
Apartment	Level	
B209	2	
B309	3	

Kitchen Work Surface

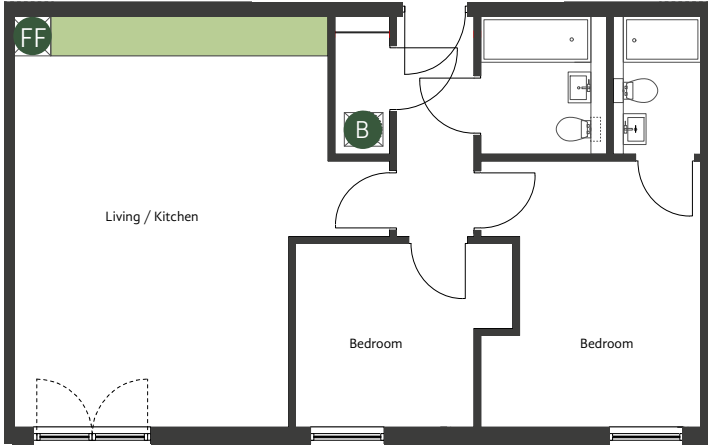
FF

Fridge Freezer

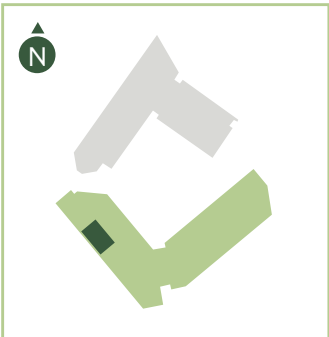
B

Boiler

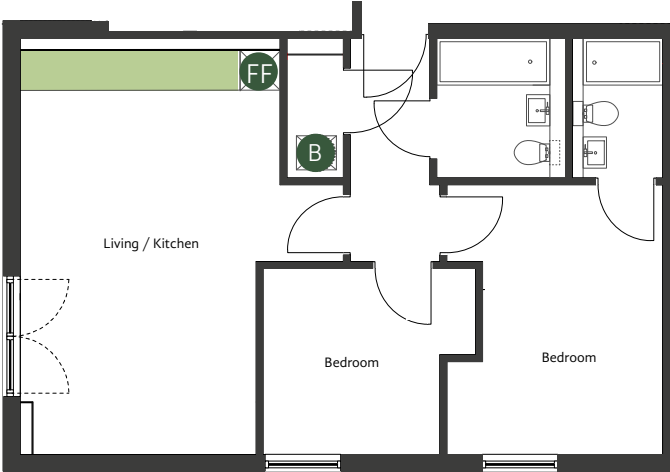
# Two Bedroom Apartment



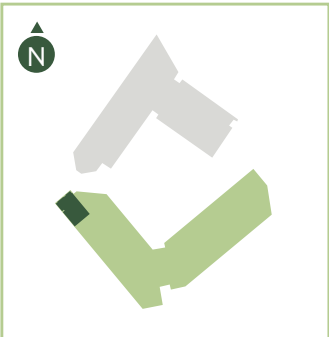
Total Area (NSA)  
67.10 sqm  
722 sqft



TYPE BG		Block B
Apartment	Level	
B210	2	
B310	3	



Total Area (NSA)  
60.90 sqm  
656 sqft



TYPE BH		Block B
Apartment	Level	
B211	2	
B311	3	
B411	4	
B511	5	
B611	6	
B711	7	
B811	8	
B911	9	
B1011	10	
B1111	11	

Kitchen Work Surface

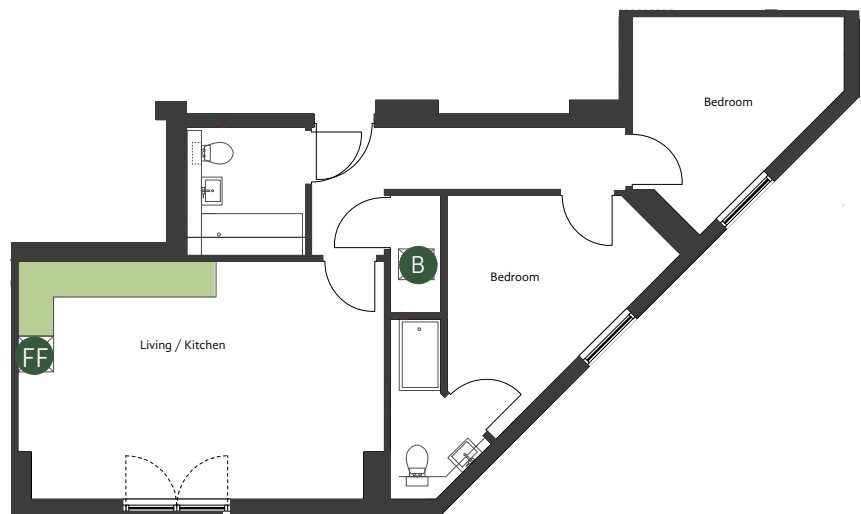
FF

Fridge Freezer

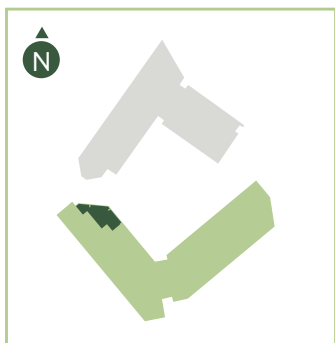
B

Boiler

# Two Bedroom Apartment

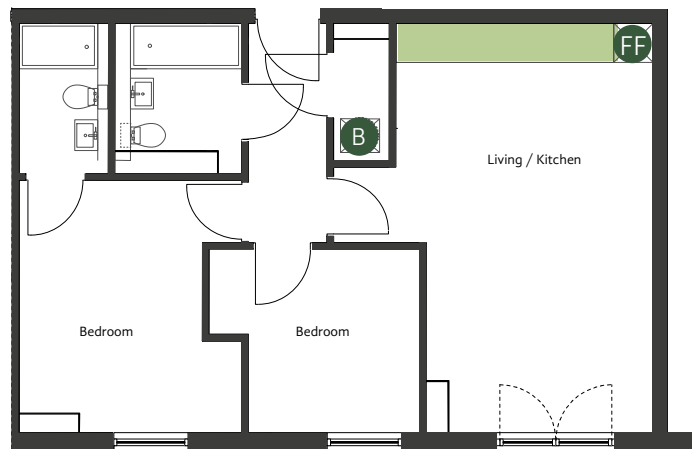


Total Area (NSA)  
64.21 sqm  
691 sqft

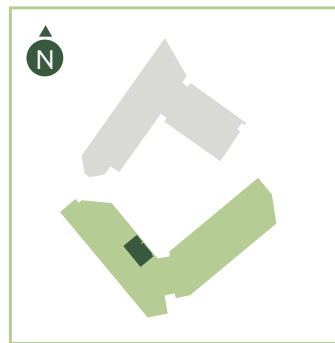


TYPE BJ Block B

Apartment	Level
B212	2
B312	3
B412	4
B512	5
B612	6
B712	7
B812	8
B912	9
B1012	10
B1112	11



Total Area (NSA)  
61.08 sqm  
657 sqft



TYPE BK Block B

Apartment	Level
B07	1
B413	4
B513	5
B613	6
B713	7
B813	8
B913	9
B1013	10
B1113	11

Kitchen Work Surface

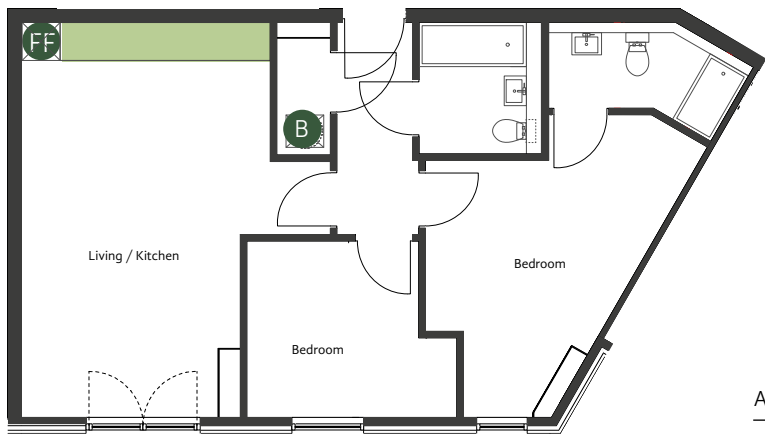
FF

Fridge Freezer

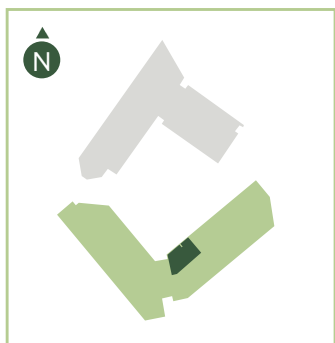
B

Boiler

# Two Bedroom Apartment

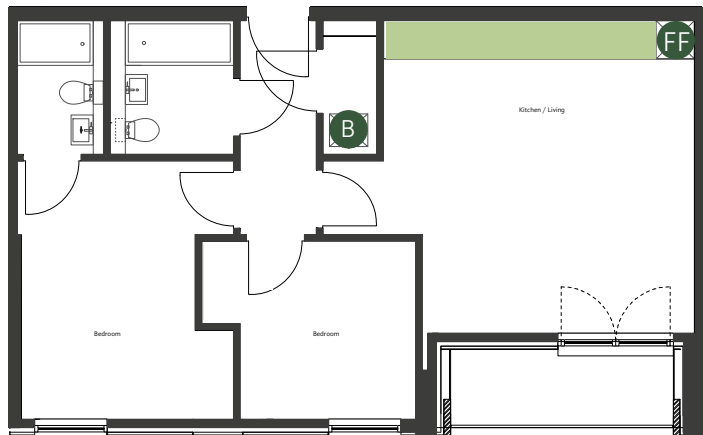


Total Area (NSA)  
63.54 sqm  
684 sqft

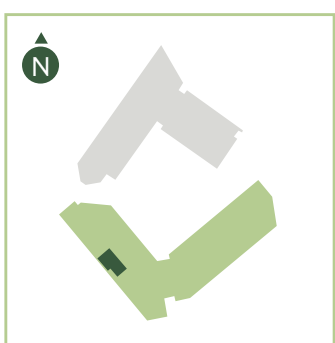


TYPE BL Block B

Apartment	Level	Apartment	Level
B215	2	B1115	11
B315	3	B1208	12
B415	4	B1309	13
B515	5	B1409	14
B615	6	B1509	15
B715	7	B1609	16
B815	8	B1709	17
B915	9	B1809	18
B1015	10		



Total Area (NSA)  
60.99 sqm  
656 sqft



TYPE BN Block B

Apartment	Level
B409	4
B509	5
B609	6
B709	7
B809	8
B909	9
B1009	10
B1109	11

Kitchen Work Surface

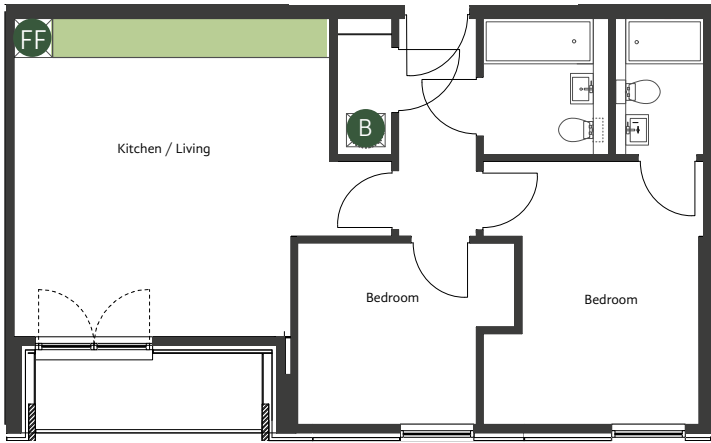
FF

Fridge Freezer

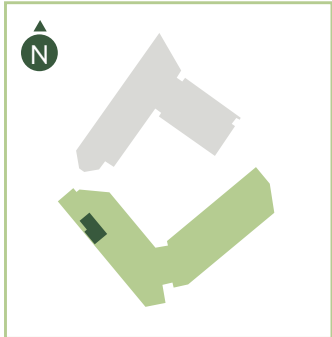
B

Boiler

# Two Bedroom Apartment

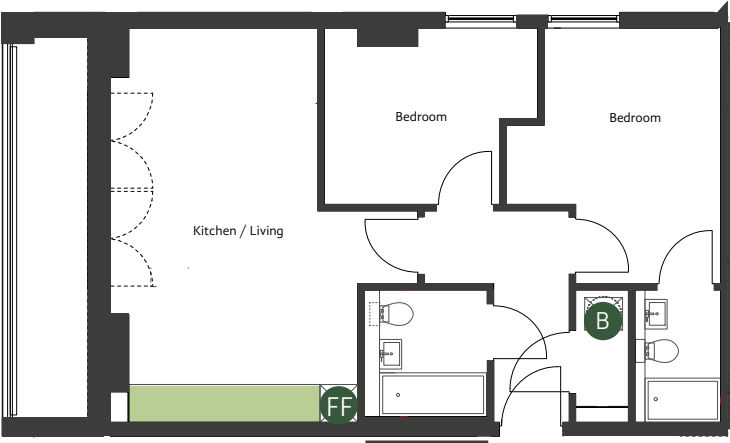


Total Area (NSA)  
60.82 sqm  
655 sqft

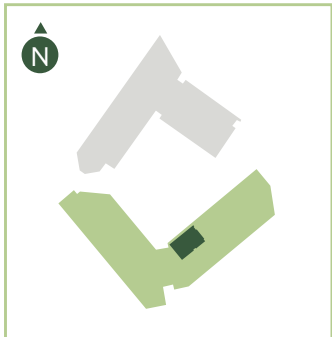


TYPE BP Block B

Apartment	Level
B410	4
B510	5
B610	6
B710	7
B810	8
B910	9
B1010	10
B1110	11



Total Area (NSA)  
61.09 sqm  
658 sqft



TYPE BQ Block B

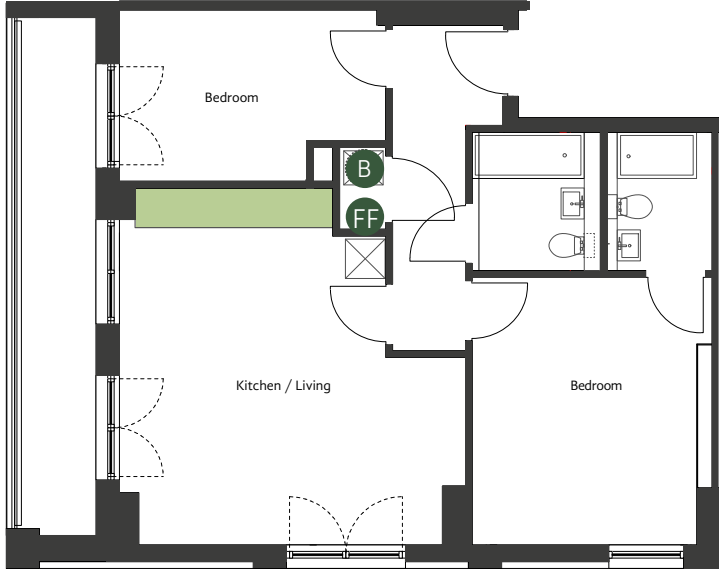
Apartment	Level
B1308	13
B1408	14
B1508	15
B1608	16
B1708	17
B1808	18

Kitchen Work Surface

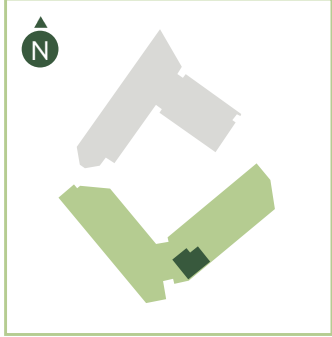
FF Fridge Freezer

B Boiler

# Two Bedroom Apartment

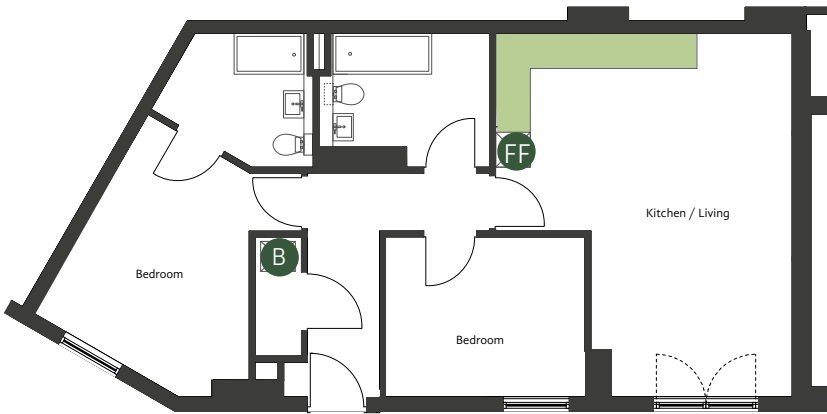


Total Area (NSA)  
67.53 sqm  
727 sqft

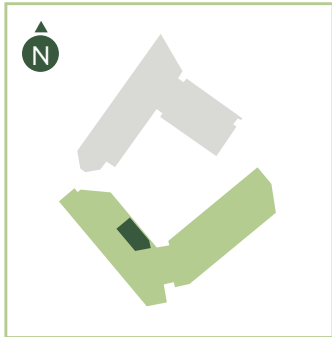


TYPE BR Block B

Apartment	Level
B1307	13
B1407	14
B1507	15
B1607	16
B1707	17
B1807	18



Total Area (NSA)  
73.3 sqm  
789 sqft



TYPE BS Block B

Kitchen Work Surface

FF Fridge Freezer

B Boiler







MANCHESTER


*live*  
**GreenGate**

One, two and three bedroom  
apartments available for rent

CALL NOW 0161 238 7400

 [livegreengate.com](http://livegreengate.com)

 [twitter.com/livegreengate](https://twitter.com/livegreengate)

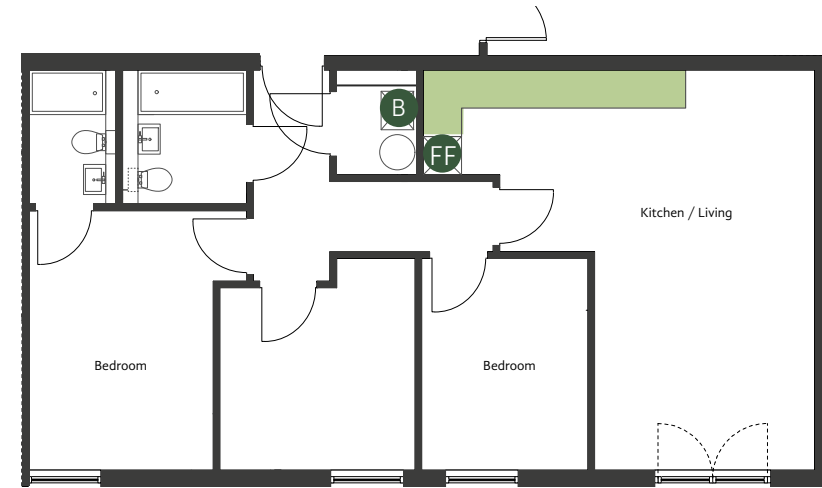
 [facebook.com/livegreengate](https://facebook.com/livegreengate)

GreenGate Manchester, Greengate, Salford M3 7ND

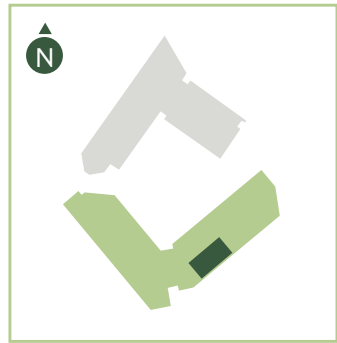


THREE  
BEDROOM  
APARTMENTS

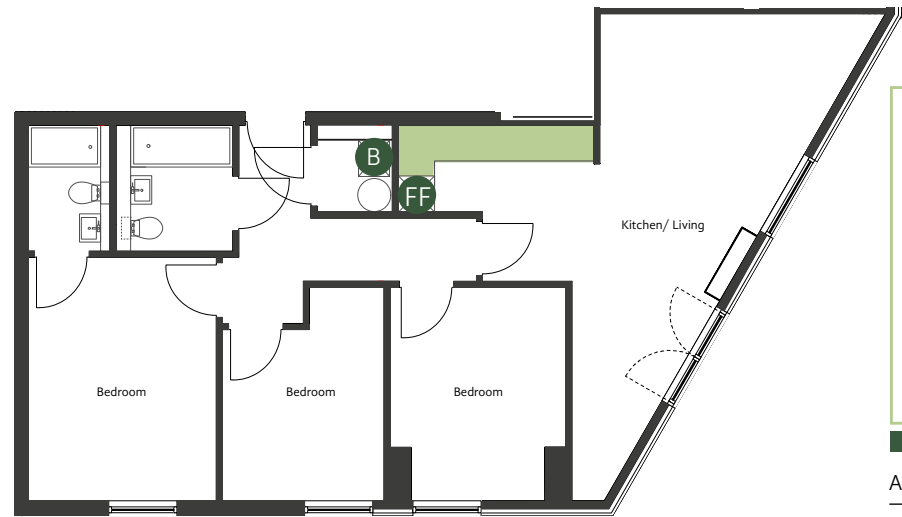
# Three Bedroom Apartment



Total Area (NSA)  
77.44 sqm  
854 sqft



TYPE BA		Block B
Apartment	Level	
B105	1	
B205	2	
B305	3	
B405	4	
B505	5	
B605	6	
B705	7	
B805	8	
B905	9	
B1005	10	
B1105	11	
B1205	12	
B1305	13	
B1405	14	
B1505	15	
B1605	16	
B1705	17	
B1805	18	



Total Area (NSA)  
79.70 sqm  
858 sqft



TYPE BB		Block B
Apartment	Level	
B103	1	
B203	2	
B303	3	

Kitchen Work Surface

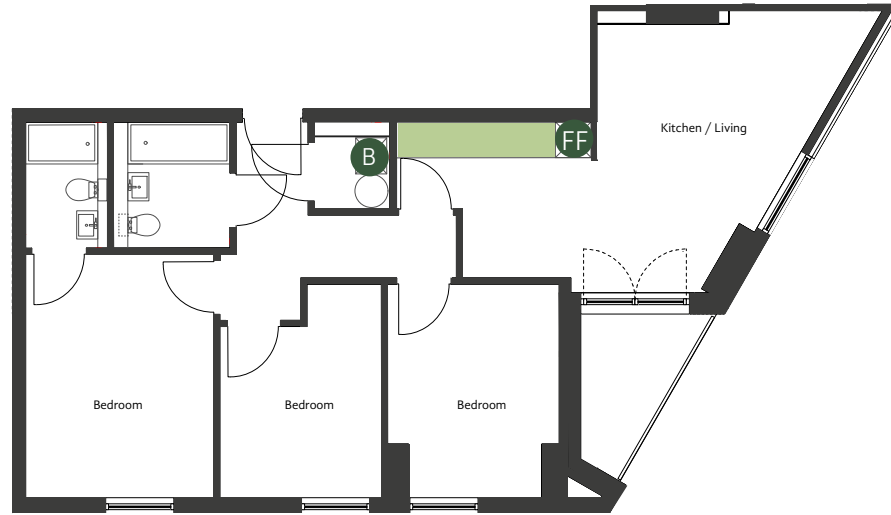
FF

Fridge Freezer

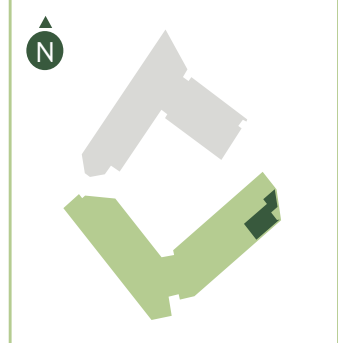
B

Boiler

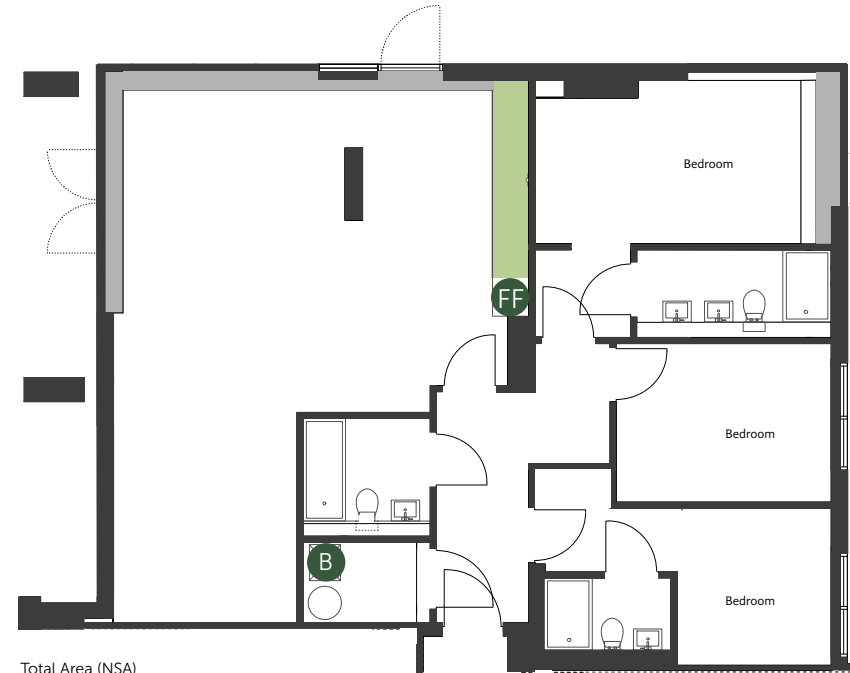
# Three Bedroom Apartment



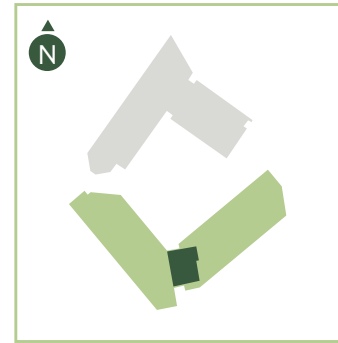
Total Area (NSA)  
79.70 sqm  
858 sqft



TYPE BC		Block B
Apartment	Level	
B403	4	
B503	5	
B603	6	
B703	7	
B803	8	
B903	9	
B1003	10	
B1103	11	
B1203	12	
B1303	13	
B1403	14	
B1503	15	
B1603	16	
B1703	17	
B1803	18	



Total Area (NSA)  
111.08 sqm  
1,196 sqft



TYPE BD		Block B
Apartment	Level	
B1207	12	

Step

Kitchen Work Surface

FF

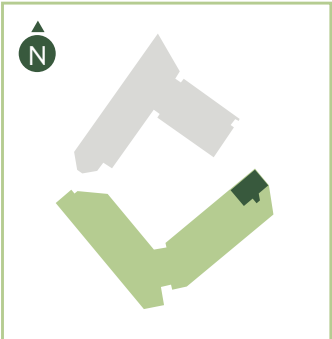
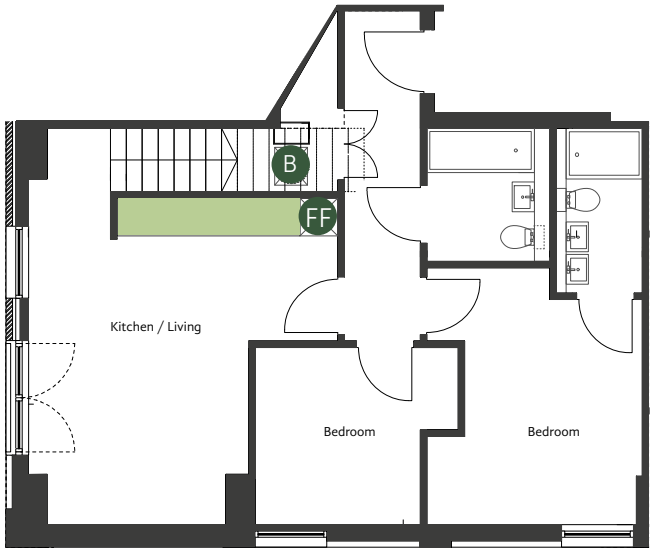
Fridge Freezer

B

Boiler

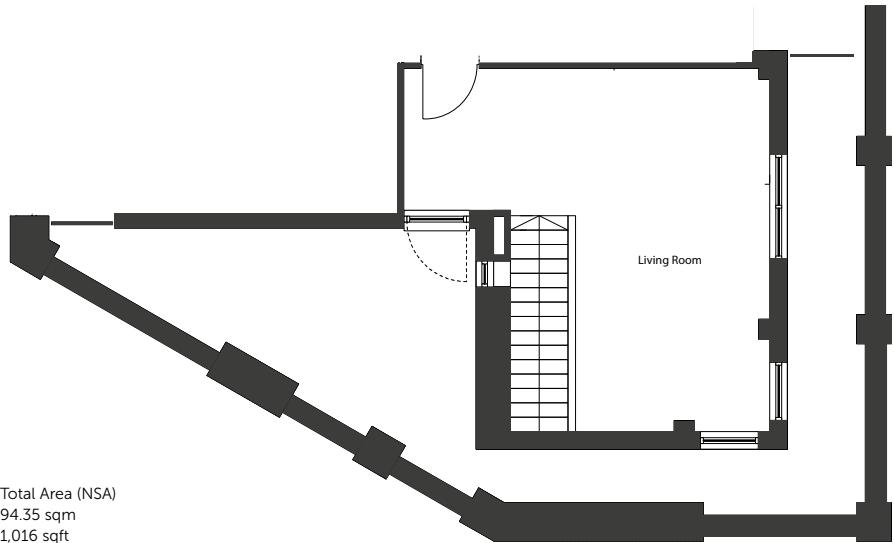
# DUPLEX APARTMENTS

## Duplex Apartments



TYPE BA Block B

Apartment	Level
B1902	19/20



Total Area (NSA)  
94.35 sqm  
1,016 sqft

Kitchen Work Surface

FF

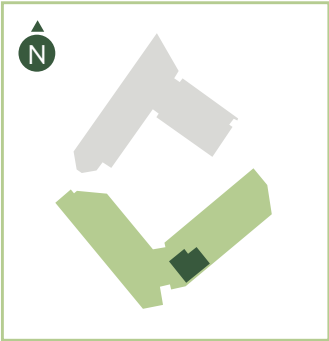
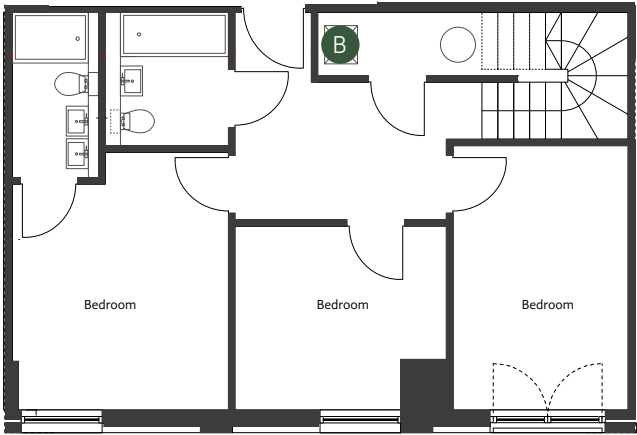
Fridge Freezer

B

Boiler

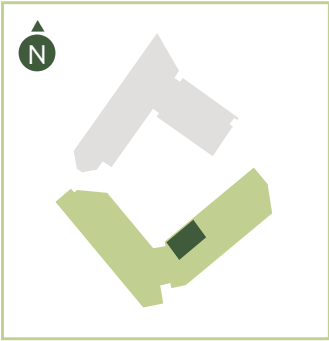
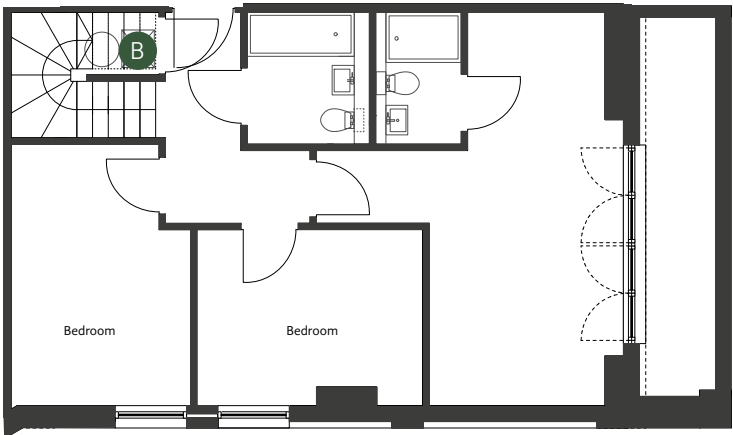
# Duplex Apartments

# Duplex Apartments



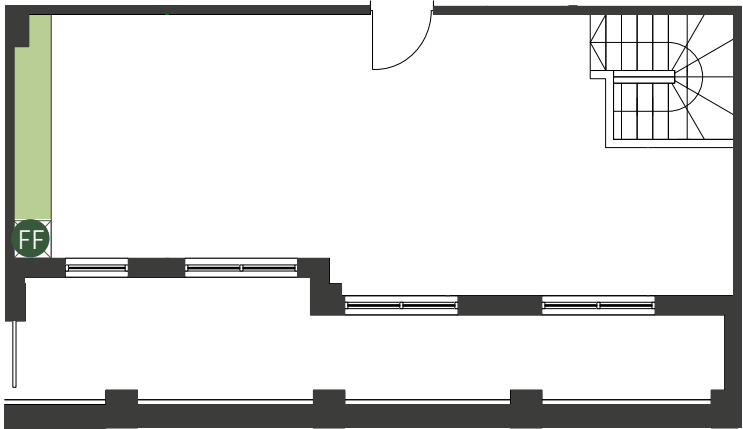
TYPE BE Block B

Apartment	Level
B1907	19/20

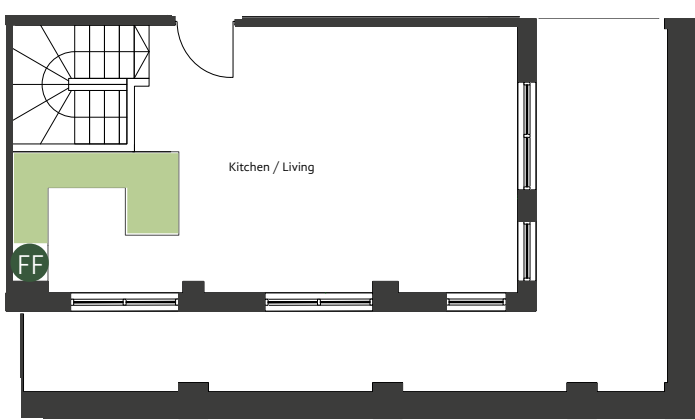


TYPE BD Block B

Apartment	Level
B1908	19/20



Total Area (NSA)  
110.32 sqm  
1,187 sqft



Total Area (NSA)  
109.37 sqm  
1,177 sqft

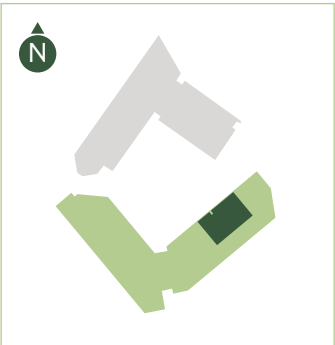
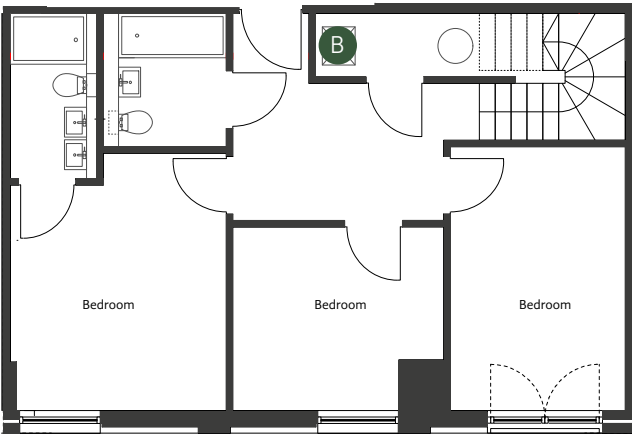
Kitchen Work Surface

FF Fridge Freezer  
B Boiler

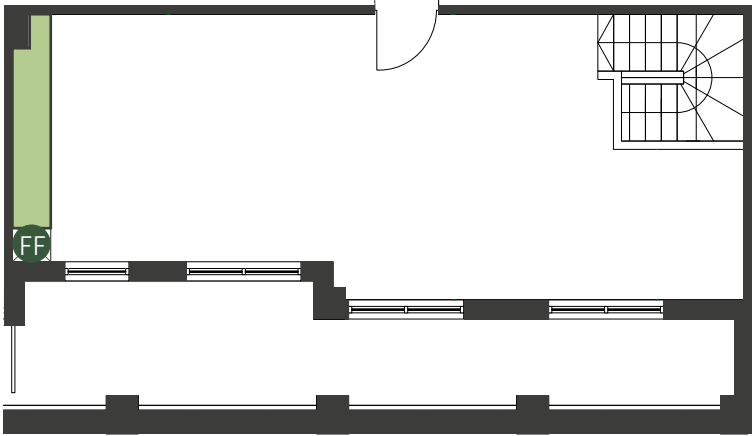
Kitchen Work Surface

FF Fridge Freezer  
B Boiler

# Duplex Apartments



TYPE BB		Block B
Apartment	Level	
B1901	19/20	



Total Area (NSA)  
110.32 sqm  
1,187 sqft

Kitchen Work Surface

Fridge Freezer

Boiler

MANCHESTER

live

GreenGate

One, two and three bedroom  
apartments available for rent

CALL NOW 0161 238 7400

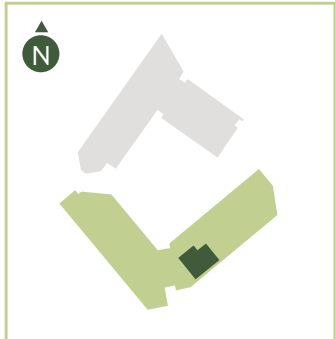
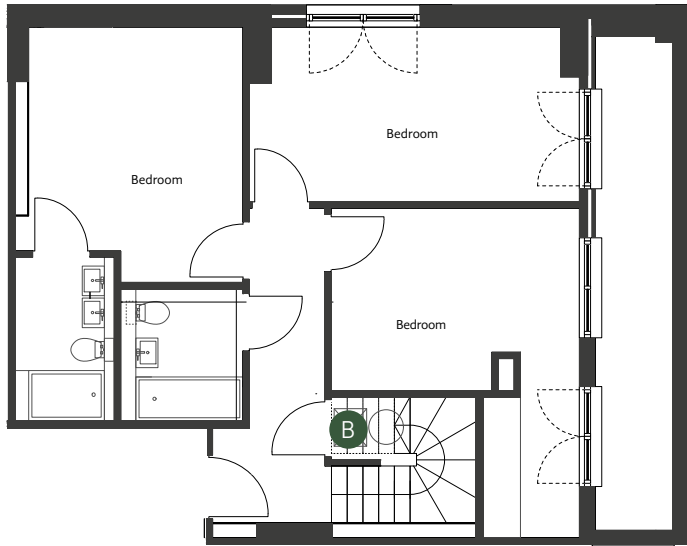
livegreengate.com

twitter.com/livegreengate

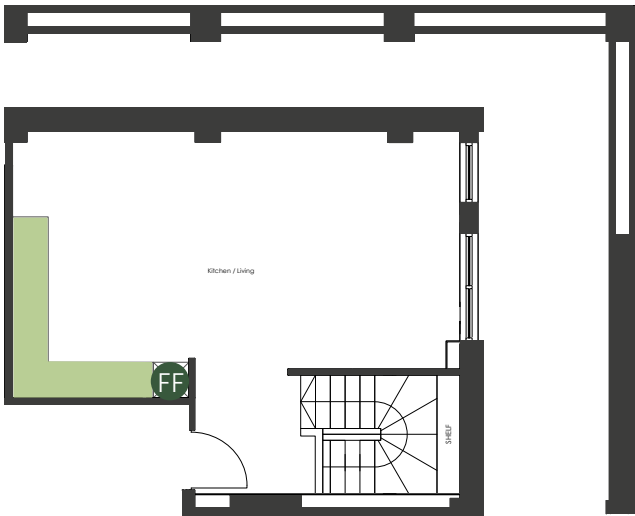
facebook.com/livegreengate

GreenGate Manchester, Greengate, Salford M3 7ND

# Duplex Apartments

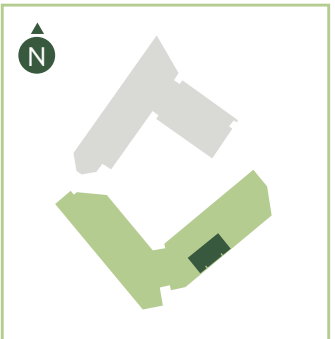
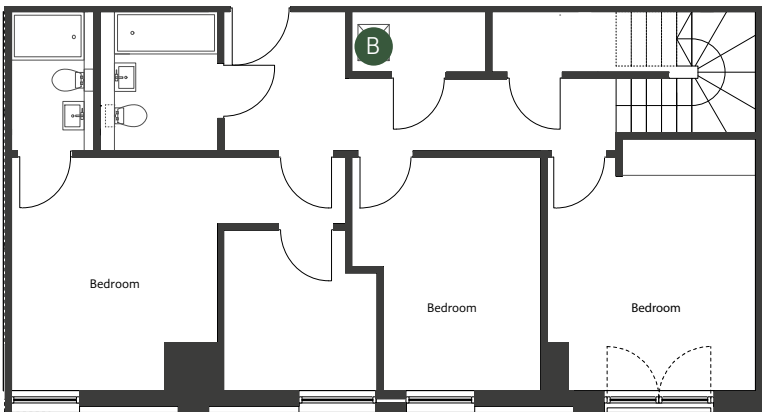


TYPE BE		Block B
Apartment	Level	
B1907	19/20	

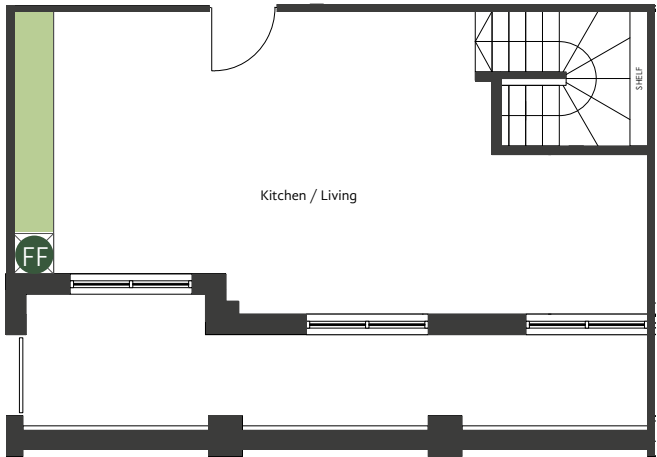


Total Area (NSA)  
110.18 sqm  
1,186 sqft

# Duplex Apartments



TYPE BG		Block B
Apartment	Level	
B1905	19/20	



Total Area (NSA)  
118.31 sqm  
1,273 sqft

Kitchen Work Surface

FF

Fridge Freezer

B

Boiler

Kitchen Work Surface

FF

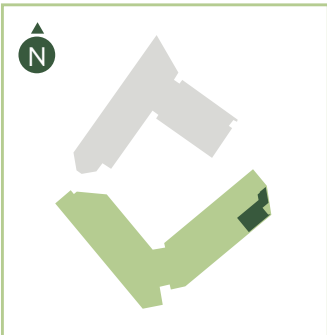
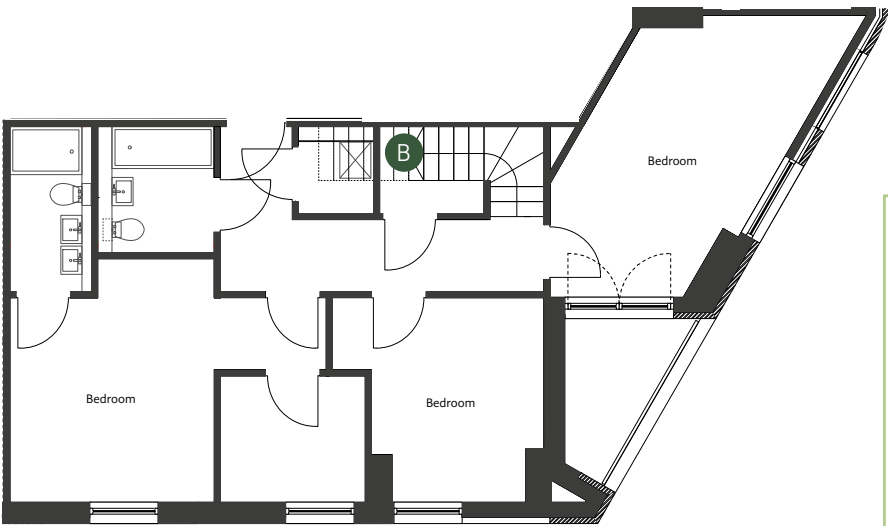
Fridge Freezer

B

Boiler

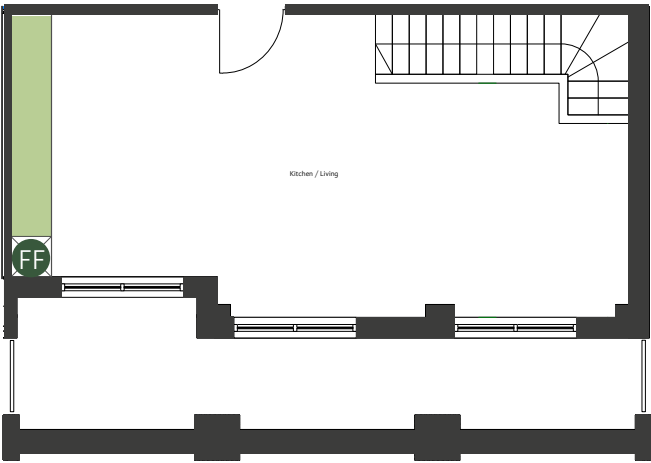


# Duplex Apartments



TYPE BH Block B

Apartment	Level
B1903	19/20



Total Area (NSA)  
112.48 sqm  
1,211 sqft

Kitchen Work Surface

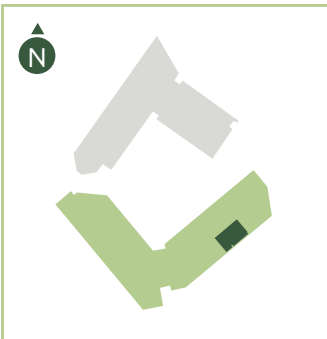
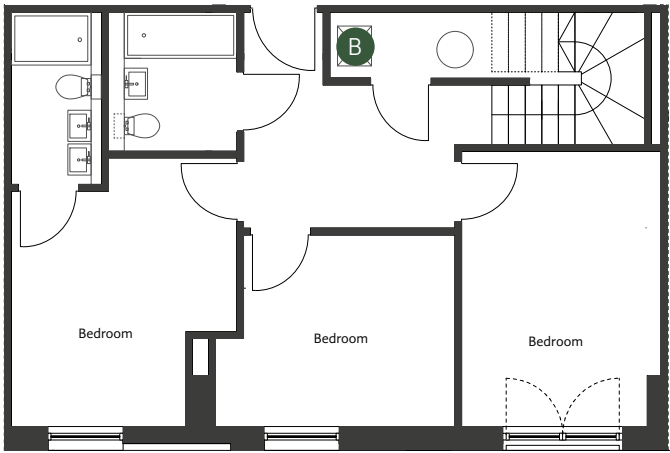
FF

Fridge Freezer

B

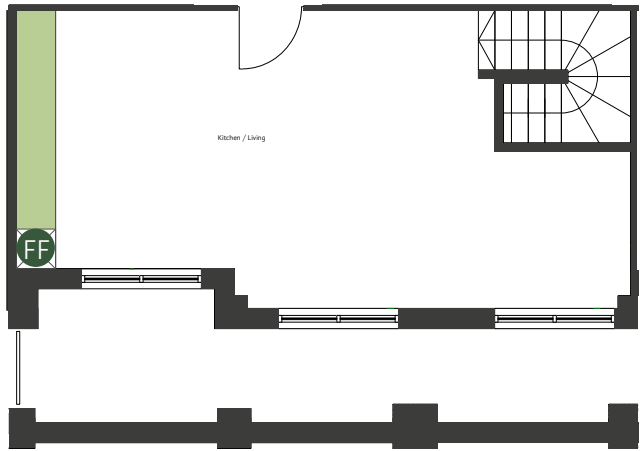
Boiler

# Duplex Apartments



TYPE BJ Block B

Apartment	Level
B1904	19/20



Total Area (NSA)  
101.9 sqm  
1,097 sqft

Kitchen Work Surface

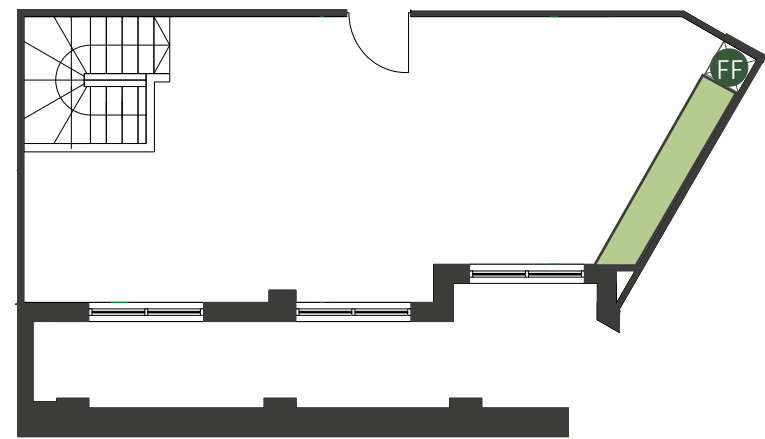
FF

Fridge Freezer

B

Boiler

# Duplex Apartments



Total Area (NSA)  
109.37 sqm  
1,177 sqft

Kitchen Work Surface

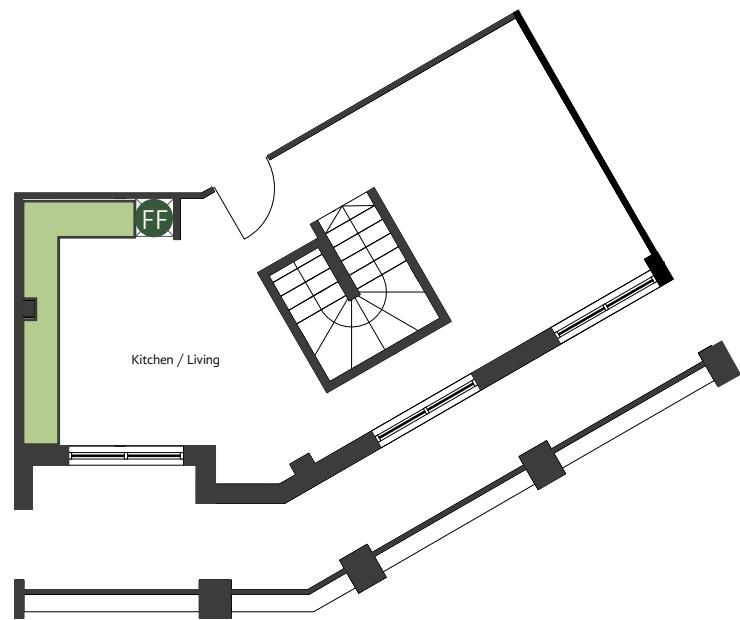
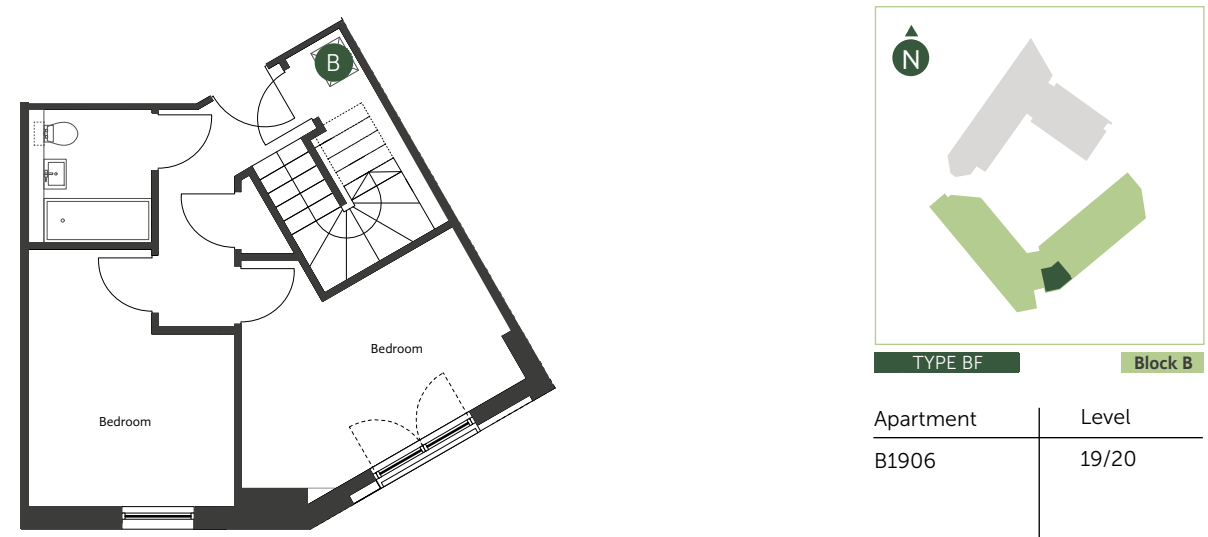
FF

Fridge Freezer

B

Boiler

# Duplex Apartments



Total Area (NSA)  
85.71 sqm  
923 sqft

Kitchen Work Surface

FF

Fridge Freezer

B

Boiler

# live GreenGate

GreenGate Manchester apartment layouts provide approximate measurements and are for illustrative purposes only. Dimensions are taken from the architects' drawings and tolerances may occur with the as-built product, therefore floor plans should not be used for purchasing items such as furniture or carpets. Measurements are taken from the architects' plans and are given to the nearest 15cm (or equivalent in inches) and have been taken from particular points within the room. Detailed plans are available for inspection at our marketing suite during normal working hours and customers may check their apartment type specification prior to entering into a reservation.

