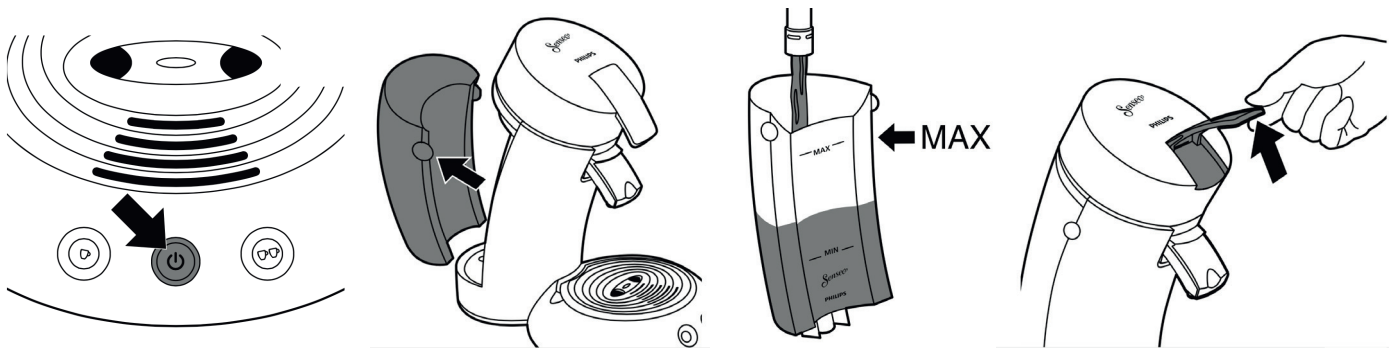
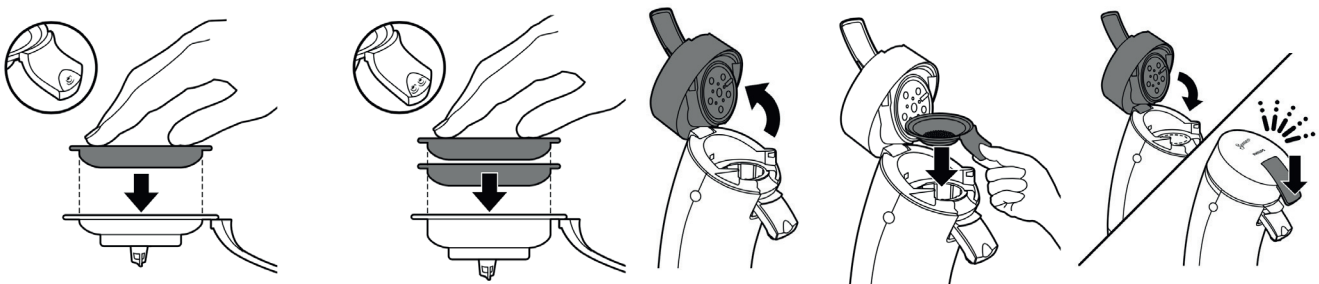


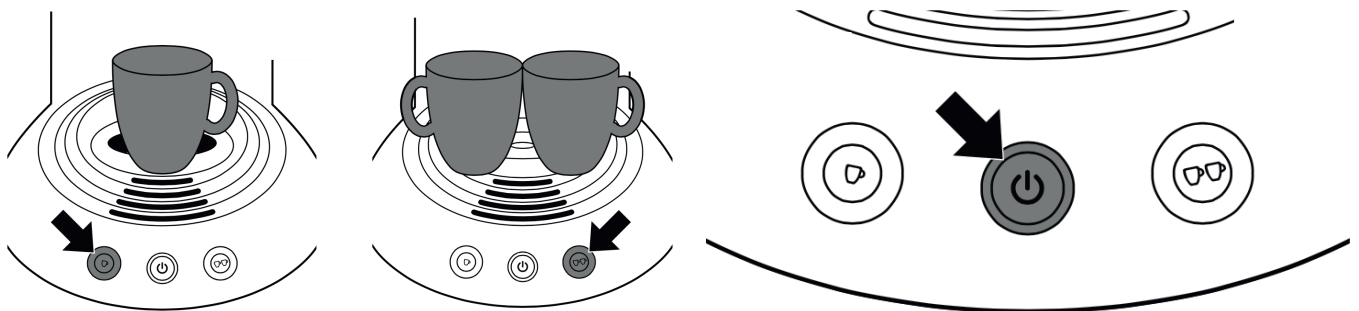
# HOW TO USE THE COFFEE MACHINE



- 1 Press the on/off button. The indicator light flashes while the water heats up. Heating up takes approx. 90 seconds. The coffee machine is ready for use when the indicator light lights up continuously.  
Fill the water reservoir with tap water, please respect the MAX level.  
Put the water reservoir back into the coffee machine. Move the lever upwards to release and open the lid.



- 2 Place the SENSEO® coffee pod(s) properly in the centre of the pod holder, with the convex side pointing downwards. Place 1 coffee pod in the 1-cup pod holder to brew one cup of coffee. Place 2 coffee pods in the 2-cup pod holder to brew two cups of coffee.  
Close the lid and lock the lever.



- 3 Place one cup or two cups under the spout openings. Press the button that indicates the number of cups of coffee you want to brew.  
After use, lift the pod holder out of the machine and remove the coffee pod(s). After use, press the on/off button 3 to switch off the machine.



# HOW TO USE THE ELECTRIC KETTLE



- 1 Fill the kettle with tap water. Please respect the minimum and maximum level indicated on the side of the kettle.
- 2 Turn the kettle on by pushing on the button located on the handle.
- 3 Wait for the button to pop. Water is hot.
- 4 Pour the hot water thanks to the spout.

