

Give us your opinion...

Does your home have a good view?

How can we keep the communal garden well looked after?

We were told by some residents that their water tanks were rusted & that their plumbing or electrics installations were badly in need of replacement. Is your home in a similar condition?

Is your flat warm in the winter & cool during the summer months? Would you like more local control over the heating in your flat?

Do you think that your home is in good repair, with sufficient light & ventilation?

Do you think that you need to upgrade your kitchen or bathroom?

Do you feel secure in your home? If you live on the ground floor does your flat feel overlooked or vulnerable from the street?

We noticed that some homes had no private balcony or garden. Would you like your own private external area of some kind?

Do you like the layouts of your home? Do they feel cramped? Would an "open plan" living arrangement make your home feel more spacious?

Examples of good design:



A room with a balcony



Example of a bathroom refit



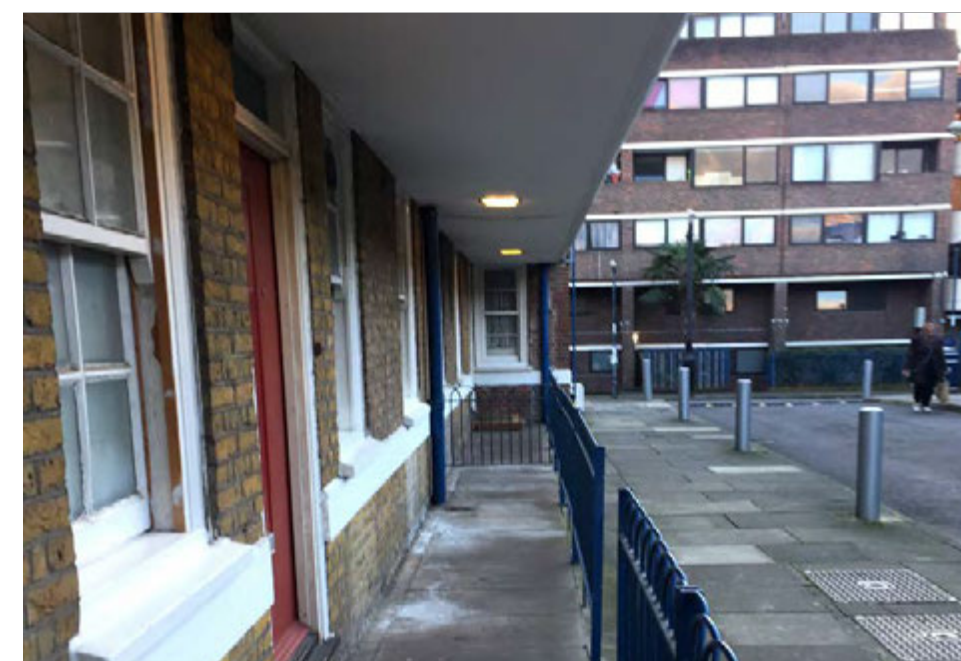
Example of a kitchen refit



Electrical installation needs replacement

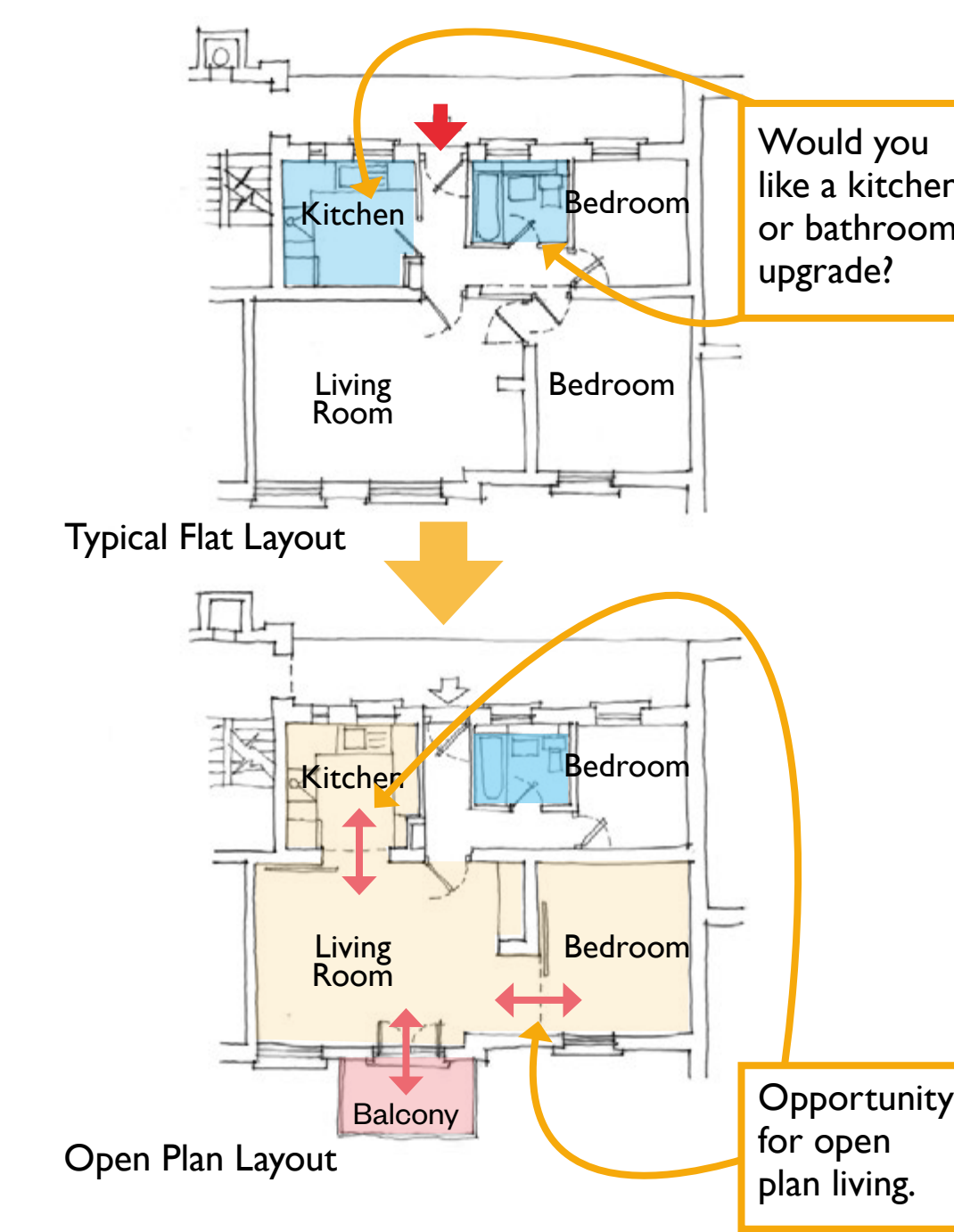


Existing water tanks are rusted.

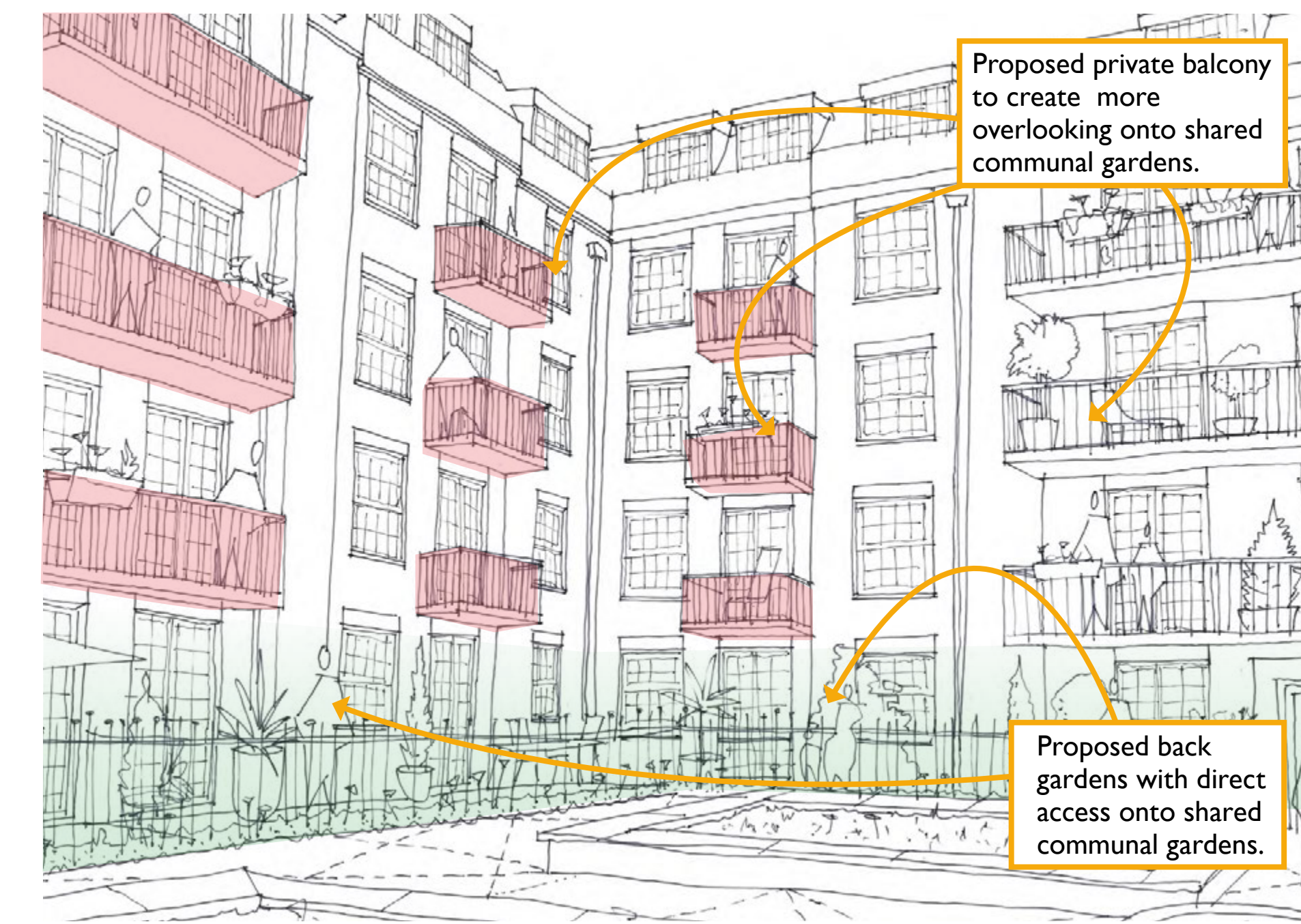
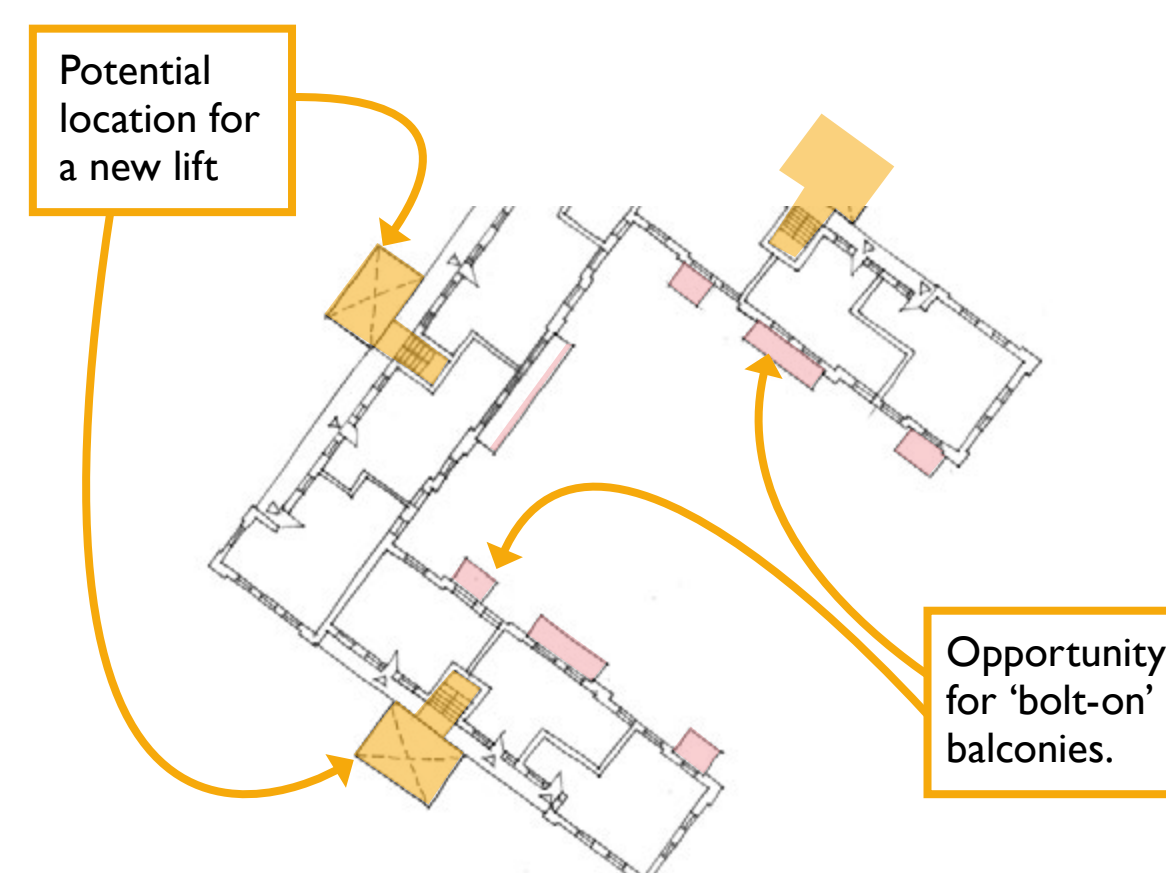


Ground floor vulnerable to the street.

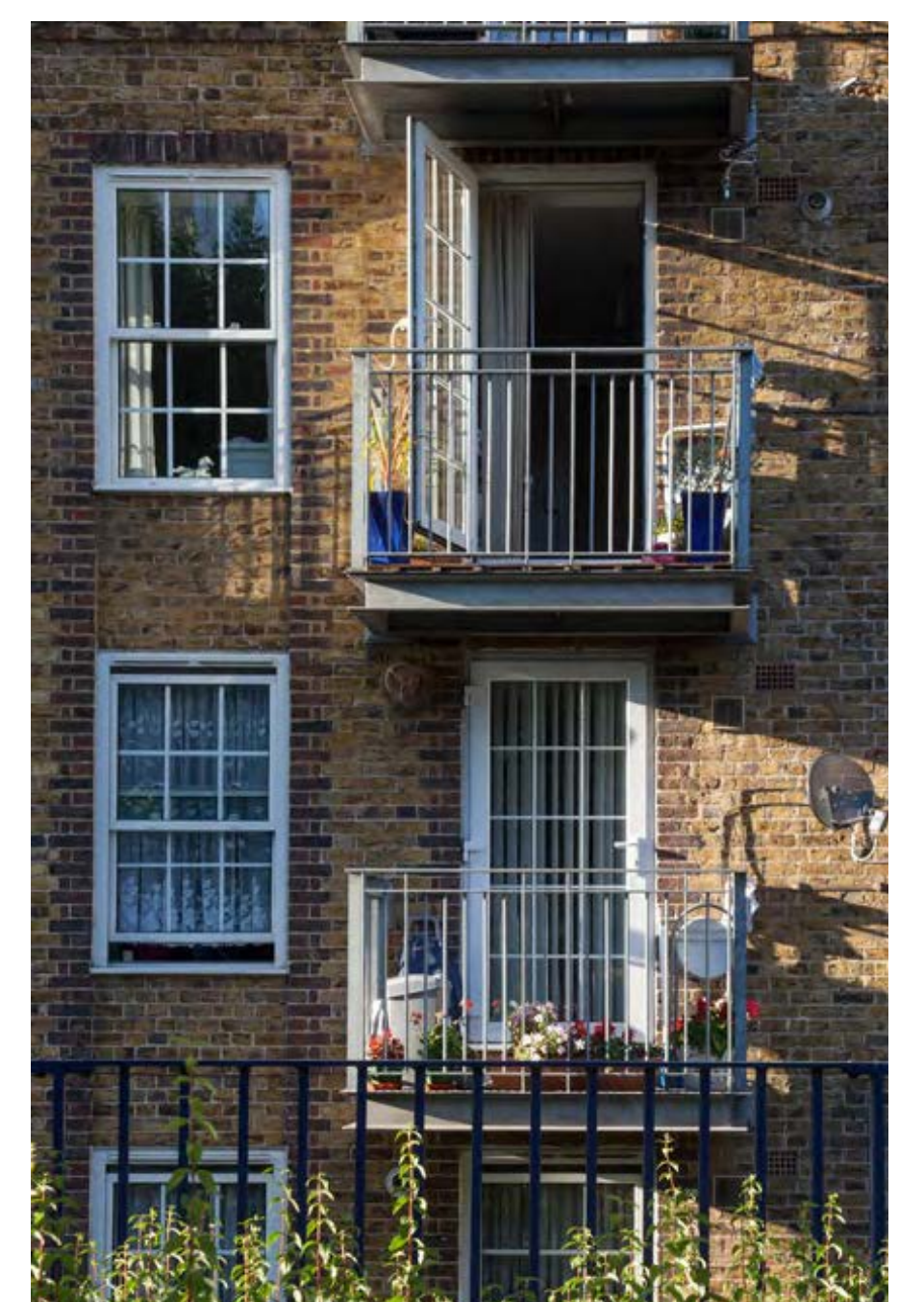
Early ideas



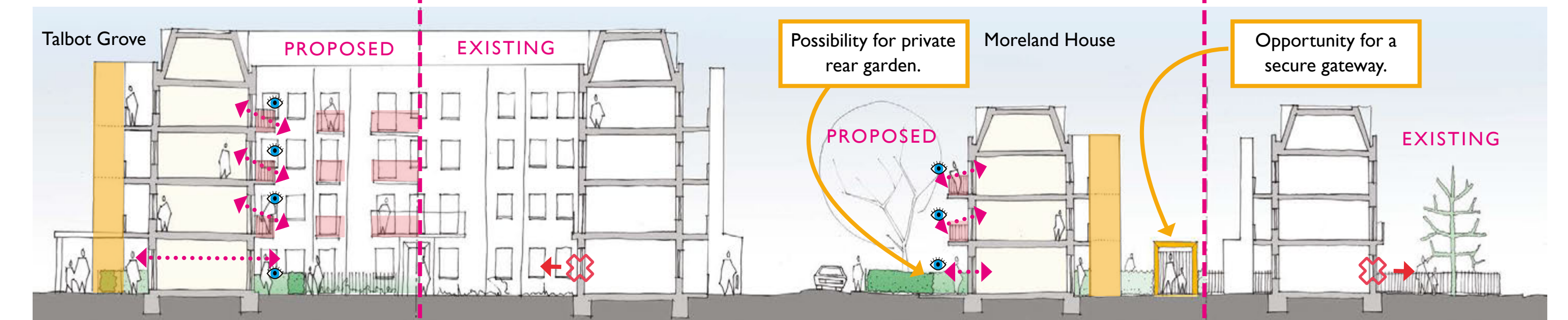
Would an open plan make your home feel more spacious?



Would you like a private balcony or garden?



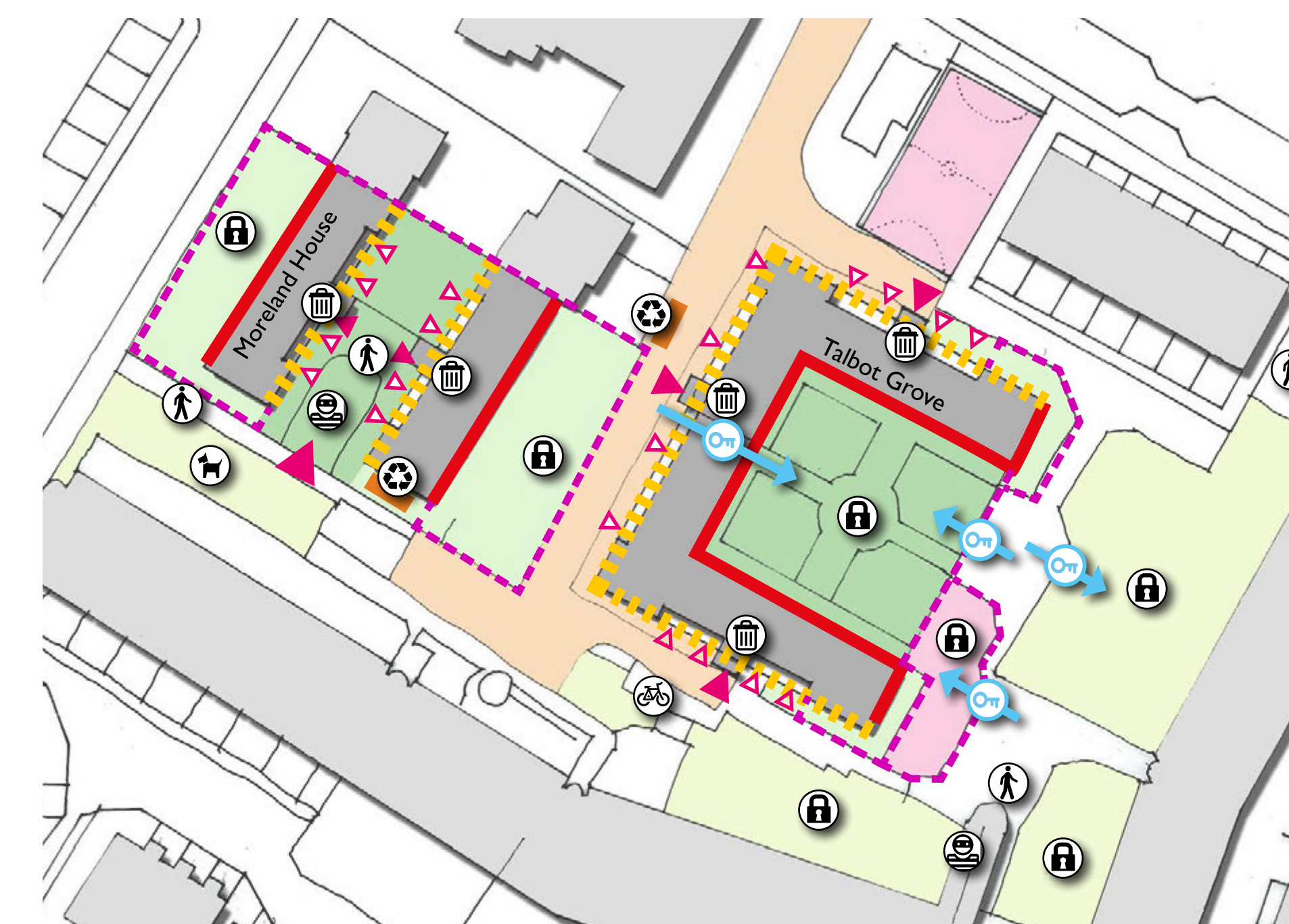
Example of a "bolt-on" balcony



Where could we place a private balcony or garden?

Proposed sections

- Key
- ▬ Vulnerable front facade without garden.
 - ▬ Rear facade without access.
 - ▬ Fencing or brick wall barrier.
 - ▬ Main block entrance.
 - ▬ Individual entry point to home.
 - ▬ Locked entry point.
 - ▬ Play area.
 - ▬ Block communal garden or courtyard.
 - ▬ Estate communal landscaping.
 - ▬ Controlled service road.
 - ▬ Communal bin storage.
 - ▬ Communal recycling bins.
 - ▬ Inaccessible area.
 - ▬ Bicycle storage.
 - ▬ Pedestrian area only.
 - ▬ Insecure area.
 - ▬ Dog walking zone.



Existing front garden at Talbot Grove



Good example: Whitmore Estate

What are your thoughts...



Give us your opinion...

Some residents said that there was insufficient space for bicycle storage and recycling bins. Do you agree?

Some residents told us that they liked the "historical character" of their building. Do you agree?

We were told by some residents that there were too many fences that impeded movement across the Estate. What do you think?

Do you think that the communal gardens are under used? Are you able to use these areas easily? Would you like better access?

Do you like the refuse chutes & the bin storage areas next to the main entrance or would you prefer a centralised collection point further away from your building?

We were told by a few residents that they would like to see some kind of communal facility near their block. What do you think?

We noticed that main entrances areas are difficult to find. Would you like a more clearly defined entrance with a lift?

Some Moreland House resident's liked their internal courtyard, but felt that its design & access made this area insecure. Do you agree?

Photos of your block:



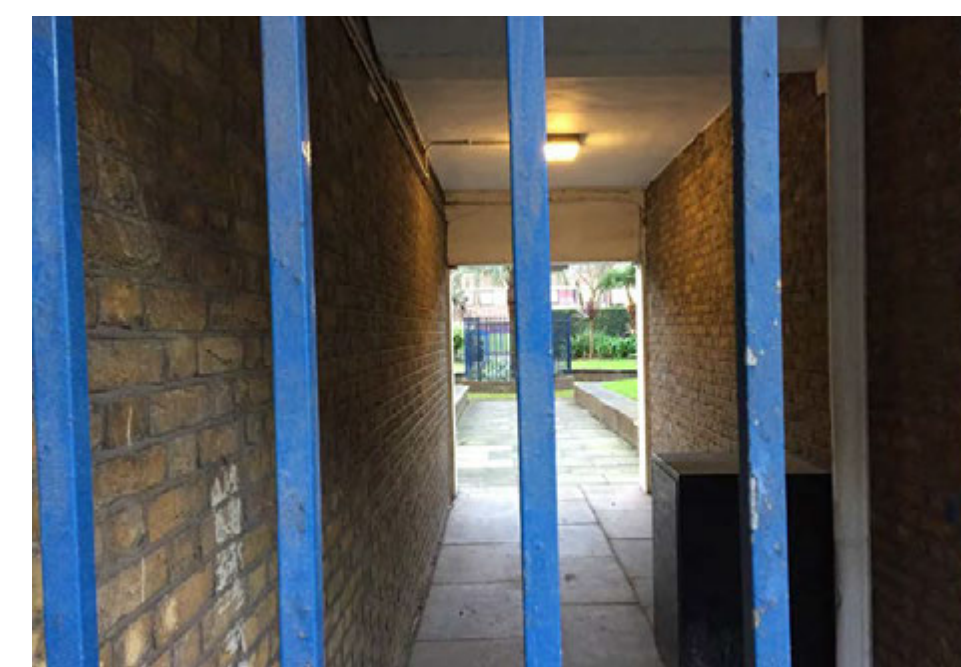
Talbot Grove's courtyard is inaccessible.



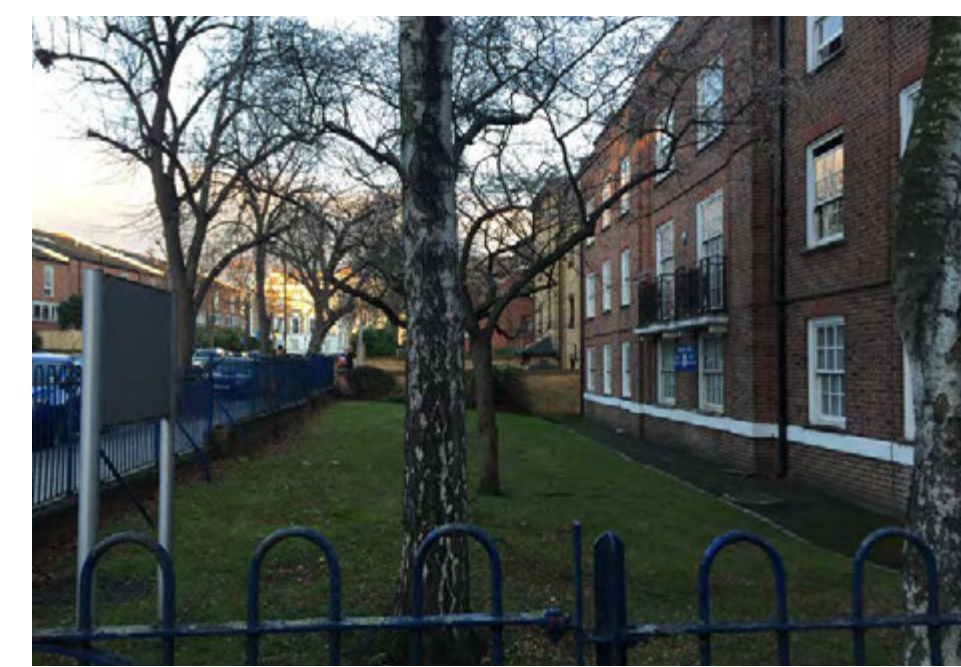
Entry to Moreland House feels insecure.



Bin storage is located next to entrances.



Communal spaces not easily accessible.



Communal spaces are underused.

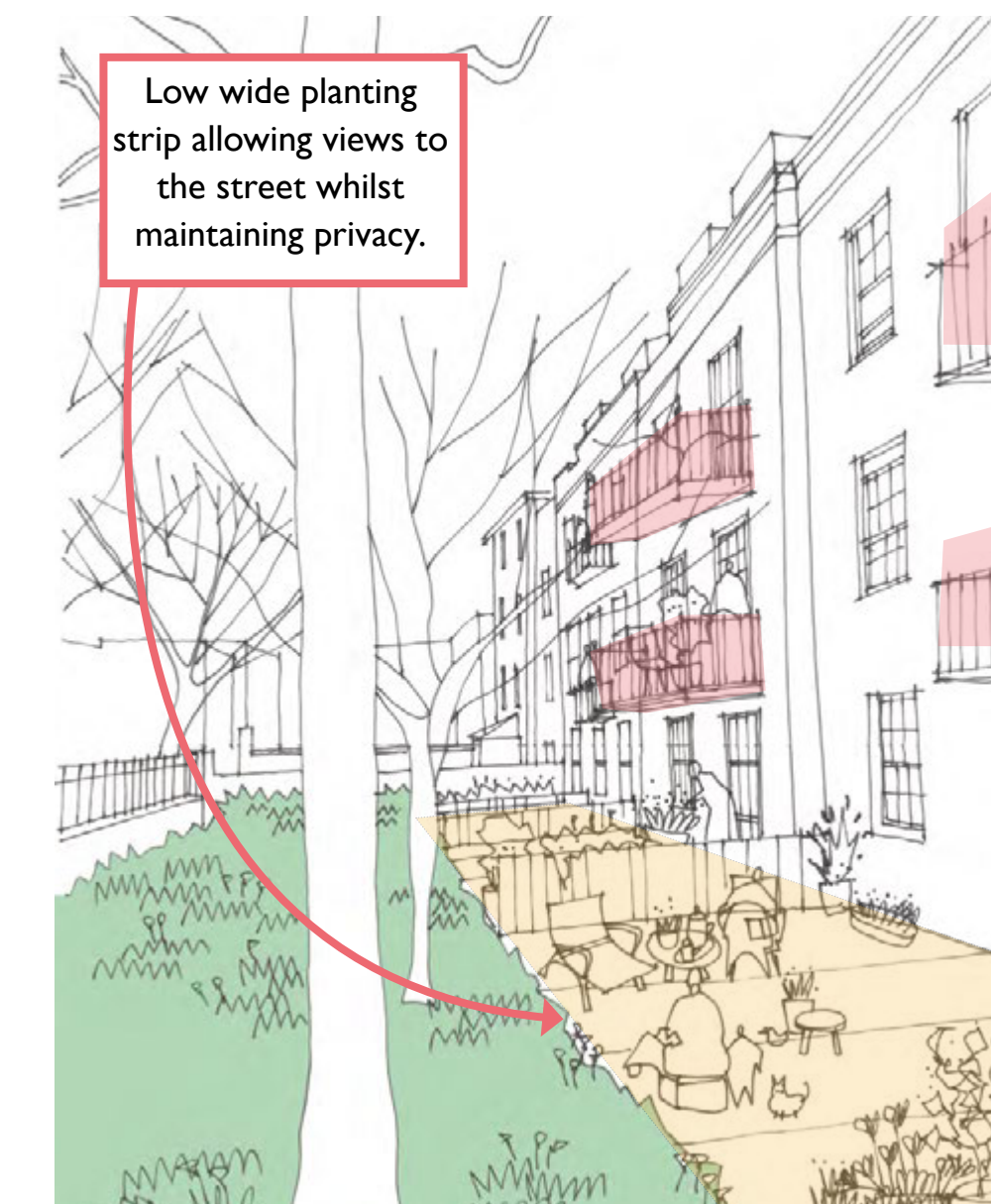


Entrances areas not clearly identified

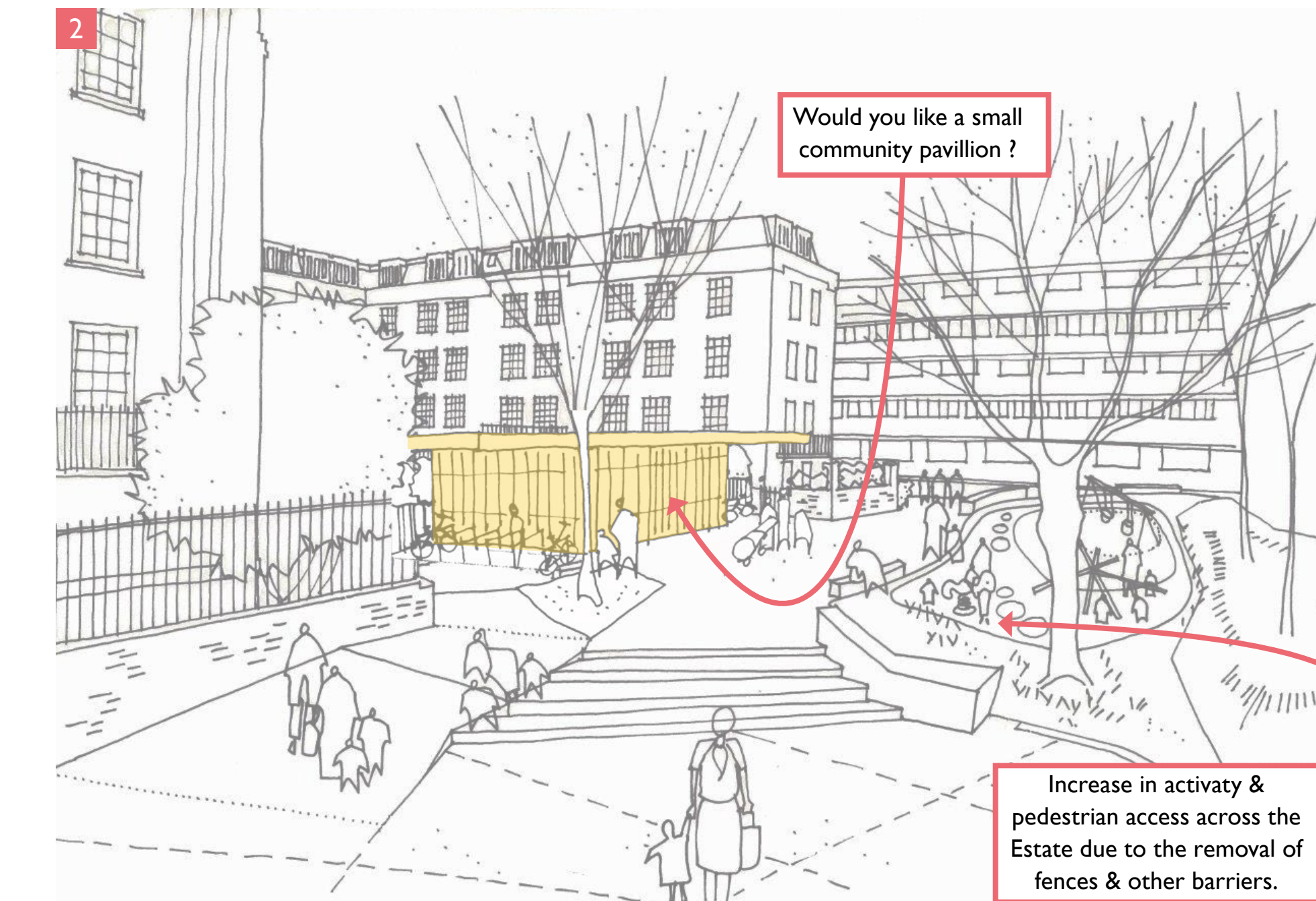
Early ideas



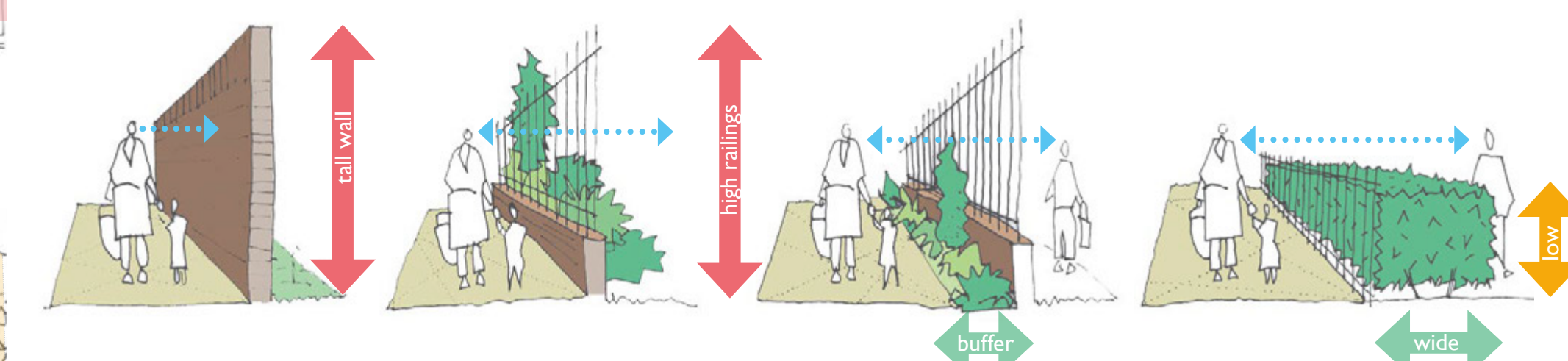
Could we remove the barriers to shared areas?



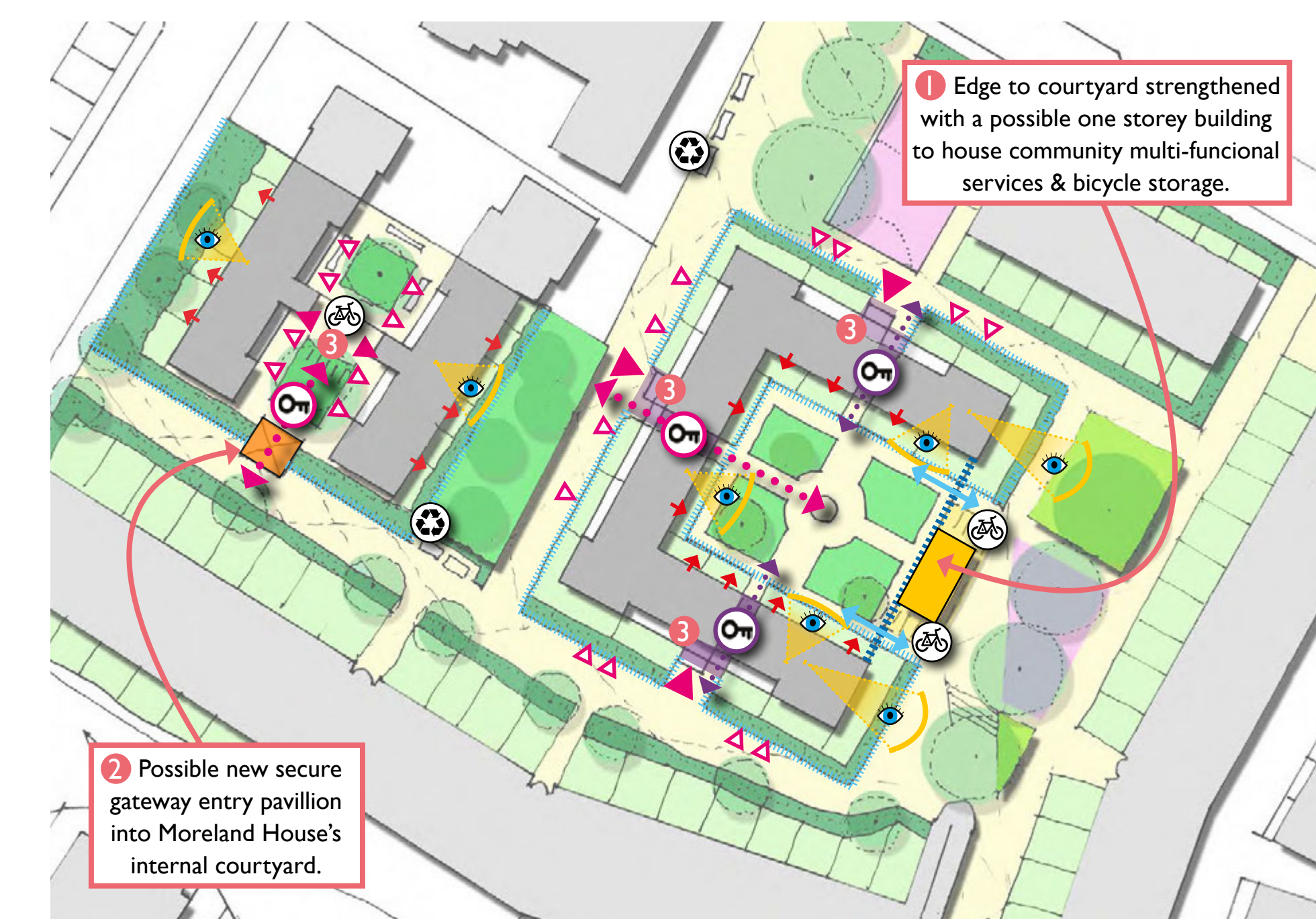
New gardens & balconies at Moreland House.



Would you like to see more accessibility across your estate?



Do you feel safe walking around the Estate? - Boundary Studies



Would you like a community facility near your home?

- Key**
- Low metal railings
 - Main block entrance
 - Individual entry point to home
 - Proposed access to rear gardens
 - Locked entry point controlled by residents
 - Possibility for further controlled access points
 - Good views over communal space
 - Private gardens
 - Possibility for new lift & main entrance
 - Secure entry gateway for Moreland House
 - Proposed Community Pavilion
 - Block communal garden or courtyard
 - Estate communal landscaping
 - Proposed shared surface
 - Play area
 - Communal bin storage
 - New communal recycling bins storage
 - Proposed bicycle storage areas

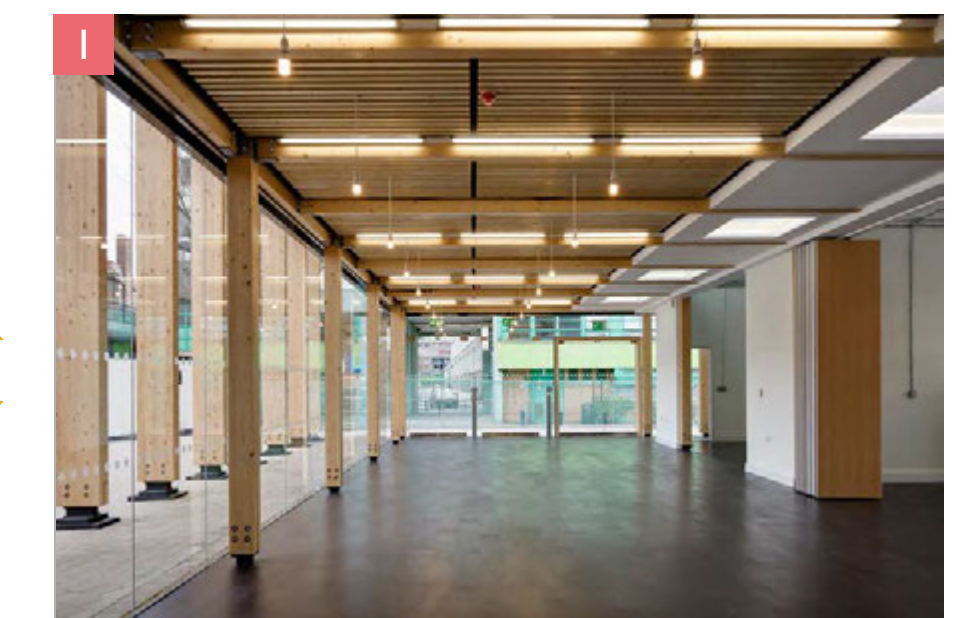
Examples of good design:



Storage areas for bicycles.



What could a community pavilion look like?



An example of a community room.



Secure gateway to communal area



New lift & defined main entrance.

What are your thoughts...

