

## Have your say...

Residents we met thought their homes were bright and sunny. Do you agree?

Some residents have told us that the flats can be too cold or too hot. What is your home like at different times of the year?

Do you think your home is in a good state of repair? Is there anything that doesn't seem to work as it should?

We've been told the rooms are a good size and are well laid out. How does your home work for you?

Replacement front doors and new windows fit poorly and are draughty

There is no private outdoor space for studios on the ground floor. Would you like one?

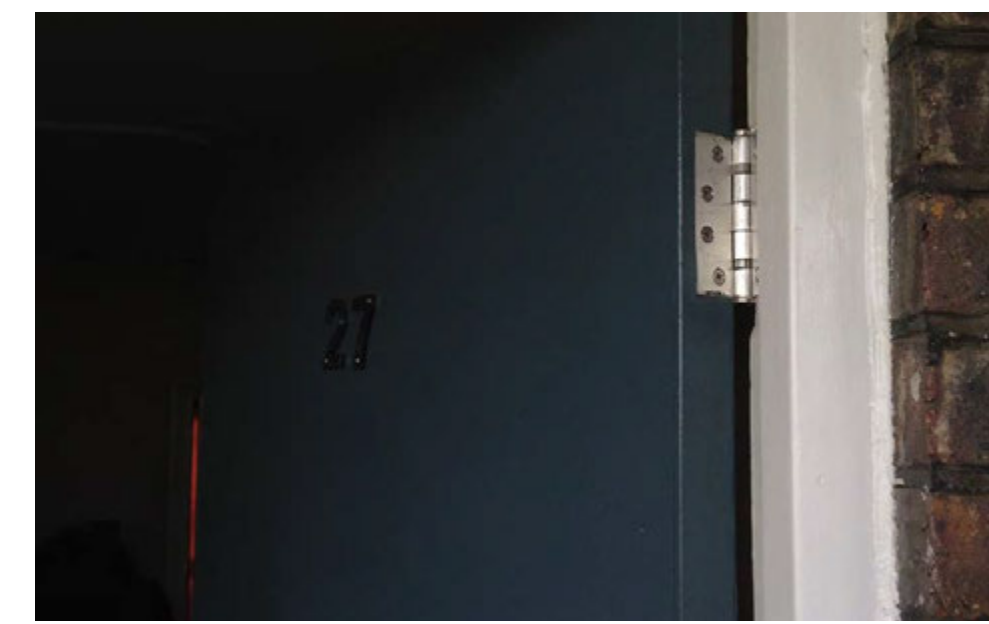
The balconies are very small - especially on the one bedroom flats. They are too small to sit out.

There are damp patches inside some flats - some from leaks some from condensation.

### Photos of your home:



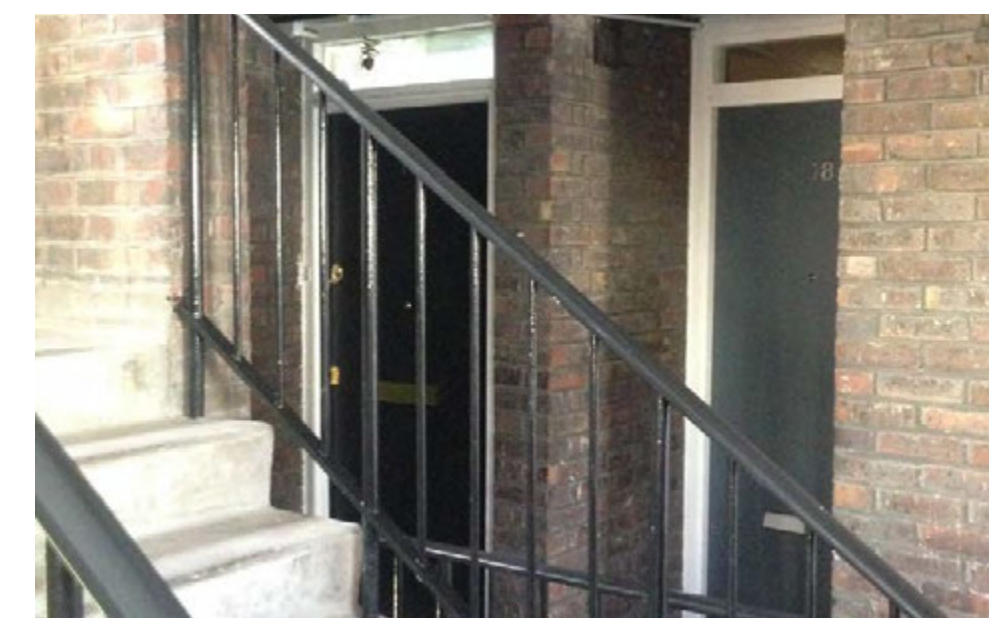
All homes have some outdoor space



New doors don't fit well



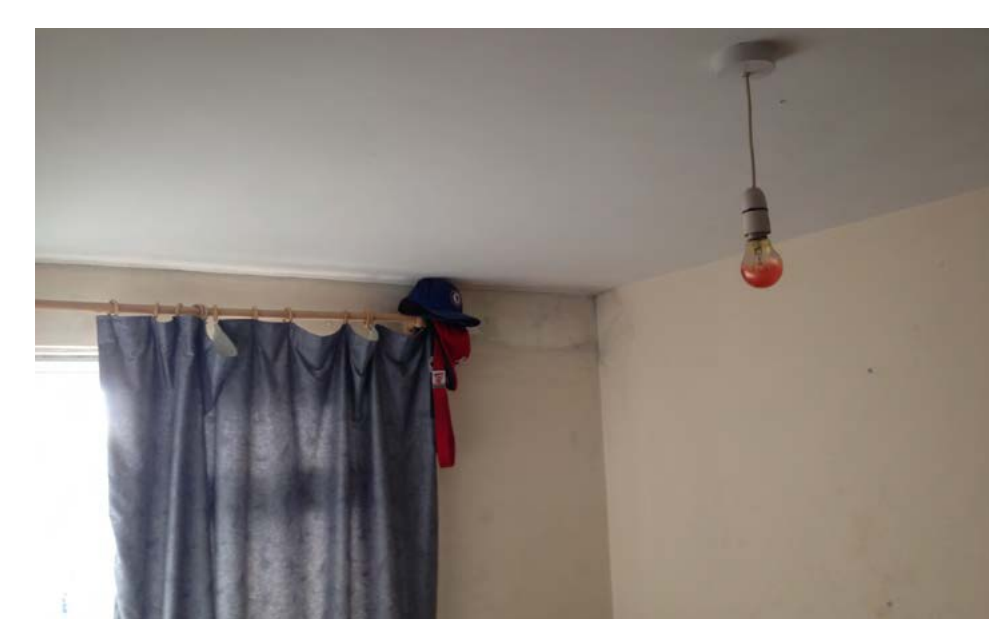
Homes have individual boilers



Doorways are recessed



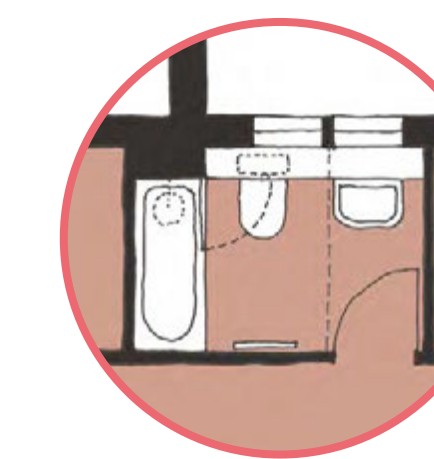
One bed flats have small balconies



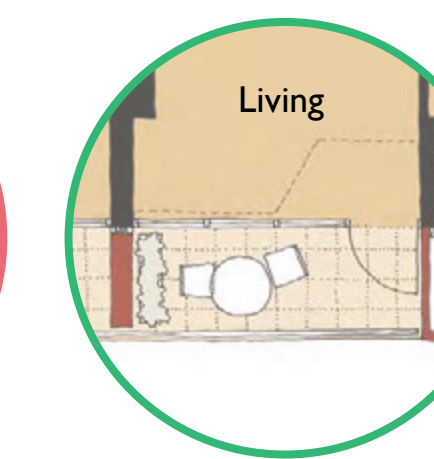
Mould growth at cold spots

## Early ideas

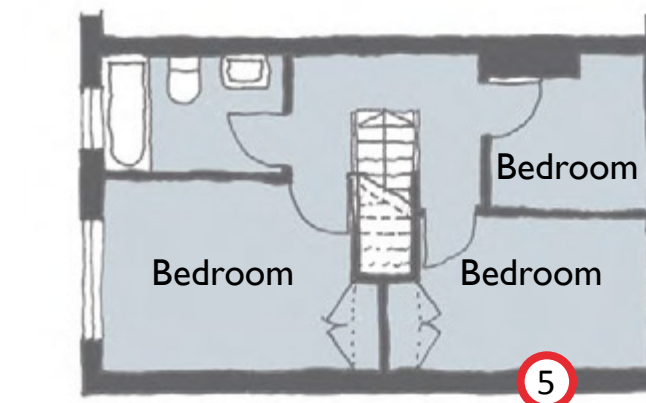
What if...  
1. Bathrooms and toilets were combined?



What if...  
2. Small balconies were incorporated into internal space?

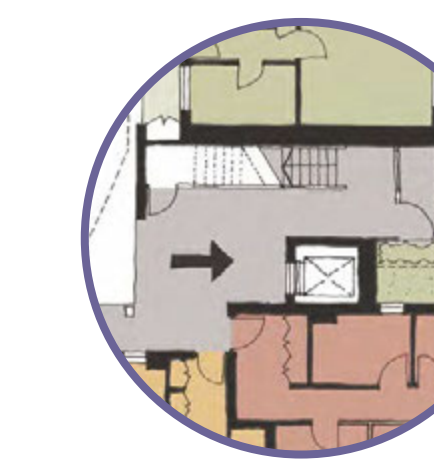


What if...  
3. Kitchens to maisonettes were made bigger?



Typical Upper Plan - Maisonettes

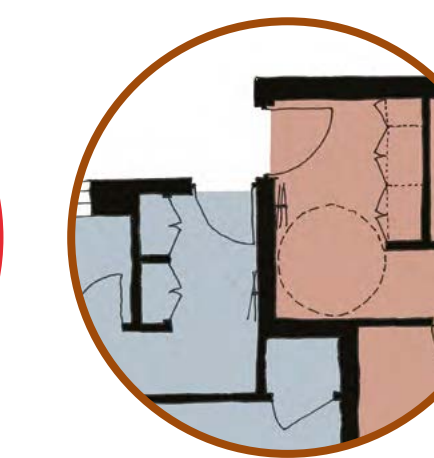
What if...  
4. The lift and stair we changed to allow easier access?



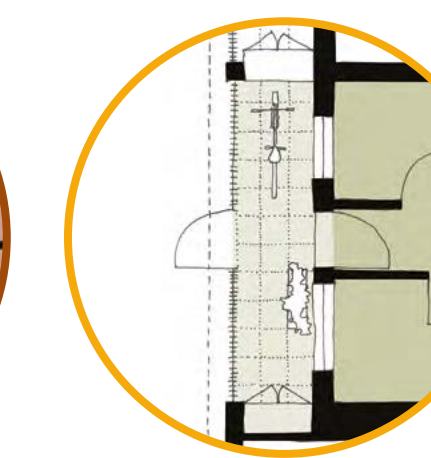
What if...  
5. End walls were insulated to keep flats warmer?



What if...  
6. Stores became internal to flats to reduce heat loss?

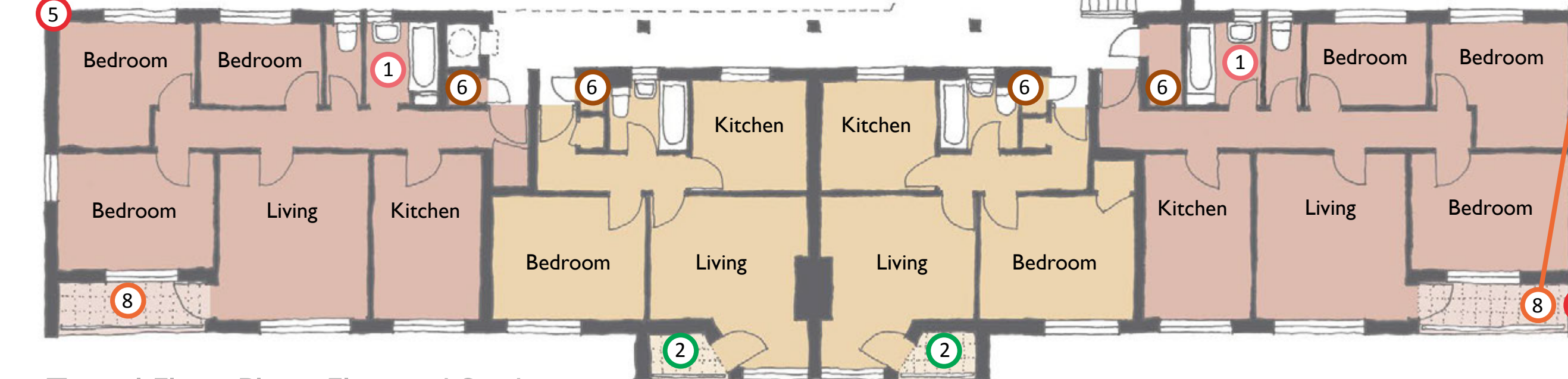
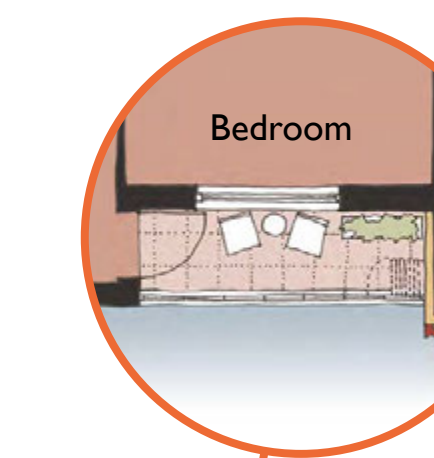


What if...  
7. Studios had small front and back gardens?



Typical Lower Plan - Maisonettes

What if...  
8. Balconies to three bed flats became winter gardens?



Typical Floor Plan - Flats and Studios



How Treadgold House looks now



Some ideas for Treadgold House

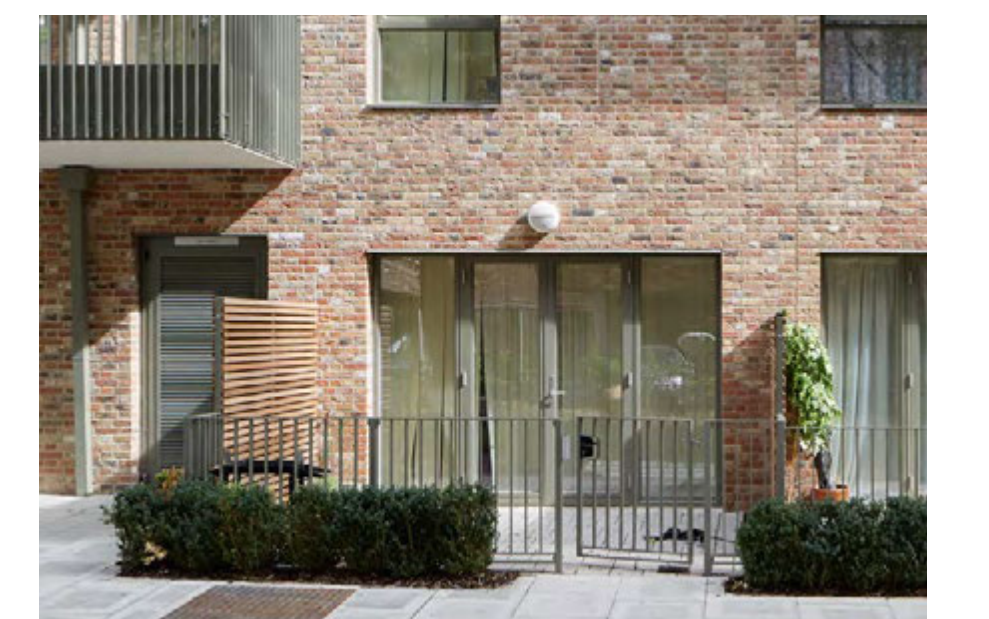
### Examples of good design:



Improve small and dark balconies



Rationalise storage to work better



Semi-private garden areas for studios



Winter gardens to reduce cold spots



Better entrances to homes



Bigger kitchens to maisonettes



What are your thoughts...





## Have your say...

The residents we met said they like the sense of community in the estate & love the location.  
How could we improve this?

People we spoke to said they like that Treadgold House is a small block.  
What do you think is good about your block?

Original signs are part of the building's history.  
Do you think they should be kept or is it time for a change?

Residents told us they enjoy being able to talk to each other from the decks.  
How could we improve the sense of community?

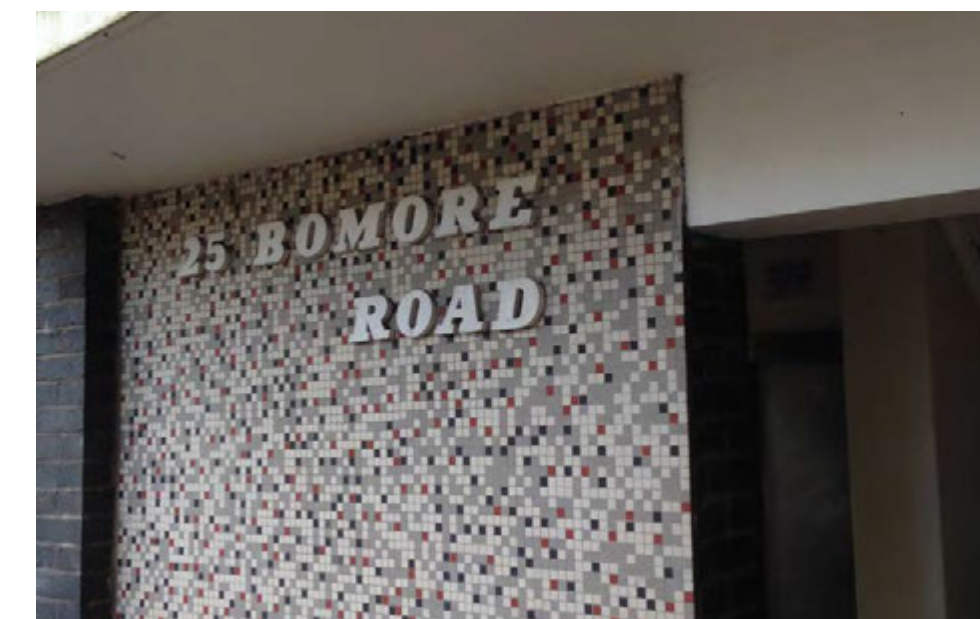
Do you feel secure in your home?  
If not, could you explain why?

Have you experienced problems with the lifts?  
How do you feel using them?

Some residents have reported problems with pigeons.  
Do you agree? If so, how does this affect you?

Some residents would like more space for refuse storage, parking and play areas.  
Do you agree?

### Photos of your block:



Original signage is in good condition



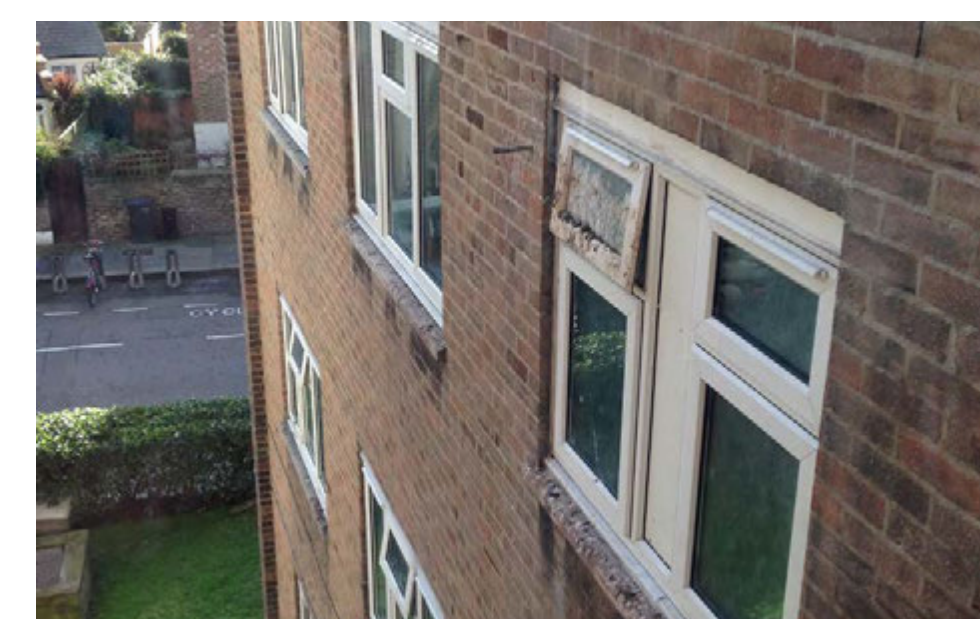
Attractive building and gardens



Views from decks create community



No bin storage



Mess from pigeons



Entrance is not overlooked by flats

## Early ideas



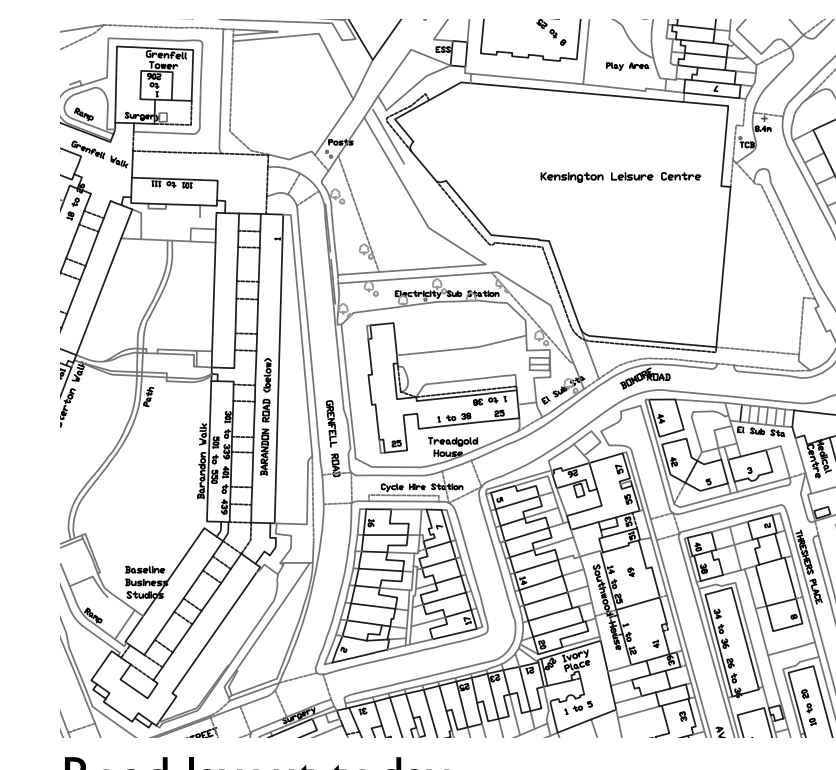
Road layout 1963



Current garden and parking layout



What if...A new pedestrian gate was added on Bomore Road and ground floor flats had small gardens?



Road layout today



What if...A new pedestrian entrance was added from the north and cars were moved away from homes?



What if...Parking, gardens and a play area each had a defined space?



Create a friendly welcome, addressing storage issues and improving the communal gardens

### Examples of good design:



New external/bike stores



New windows



Refurbish original signage



Attractive, car-free gardens



Alternatives to concrete panels



What are your thoughts...

