

## Have your say...

Do you think your home is in a good state of repair?  
Is there anything that doesn't seem to work as it should?

How do you feel about your back garden space?  
Do you use it regularly? If not then why not?

Some residents have said that poor lighting and hidden entrances make the public path feel unsafe and uncomfortable, how do you feel?

A lot of residents have said that the entrance on St. Marks road is dark and there have been reports of antisocial behavior, would you agree? How could we stop it?

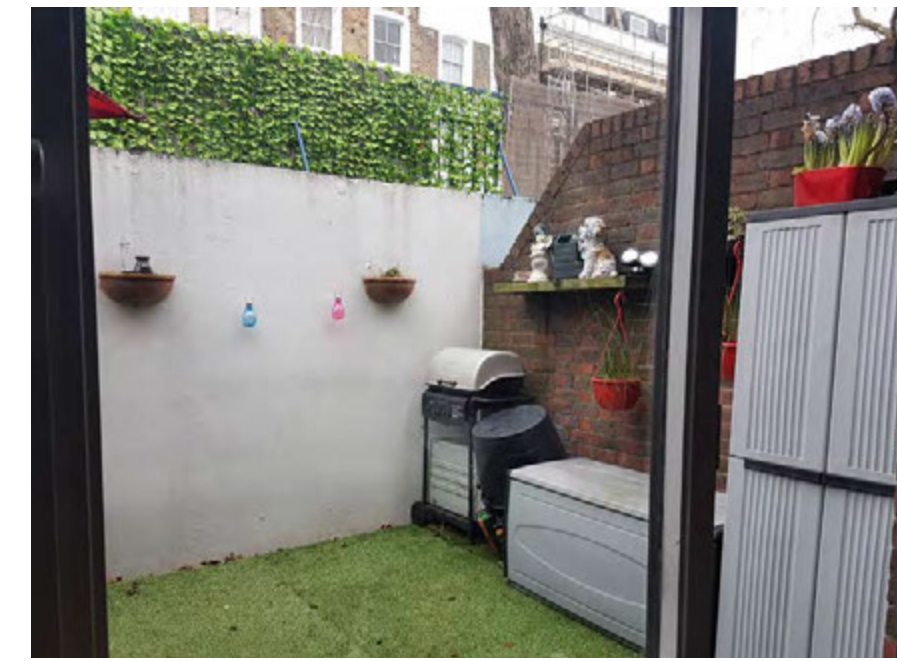
Who do you think should have access to the pedestrian street, only Camelford Court residents or the whole estate?

How do you feel about the pedestrian street?  
Some residents mentioned they would like to see it resurfaced, drainage improved and improved lighting and planting introduced.

Residents have mentioned very bad acoustics and creaking floors within the houses?  
Do you have this issue?

The kitchens and bathrooms need redoing. The water pressure is too low and so the showers do not work at all. There are plumbing issues and many reports of leaks, some of which have caused the ceilings to break through. What is your experience?

### What works:



A typical back garden in use



Front Entrances

### What doesn't work:



Ventilation wall blocks off the street.



Walkway constantly floods



Underpass promotes anti-social behavior



Steep narrow access. Designated area for large rubbish collection.

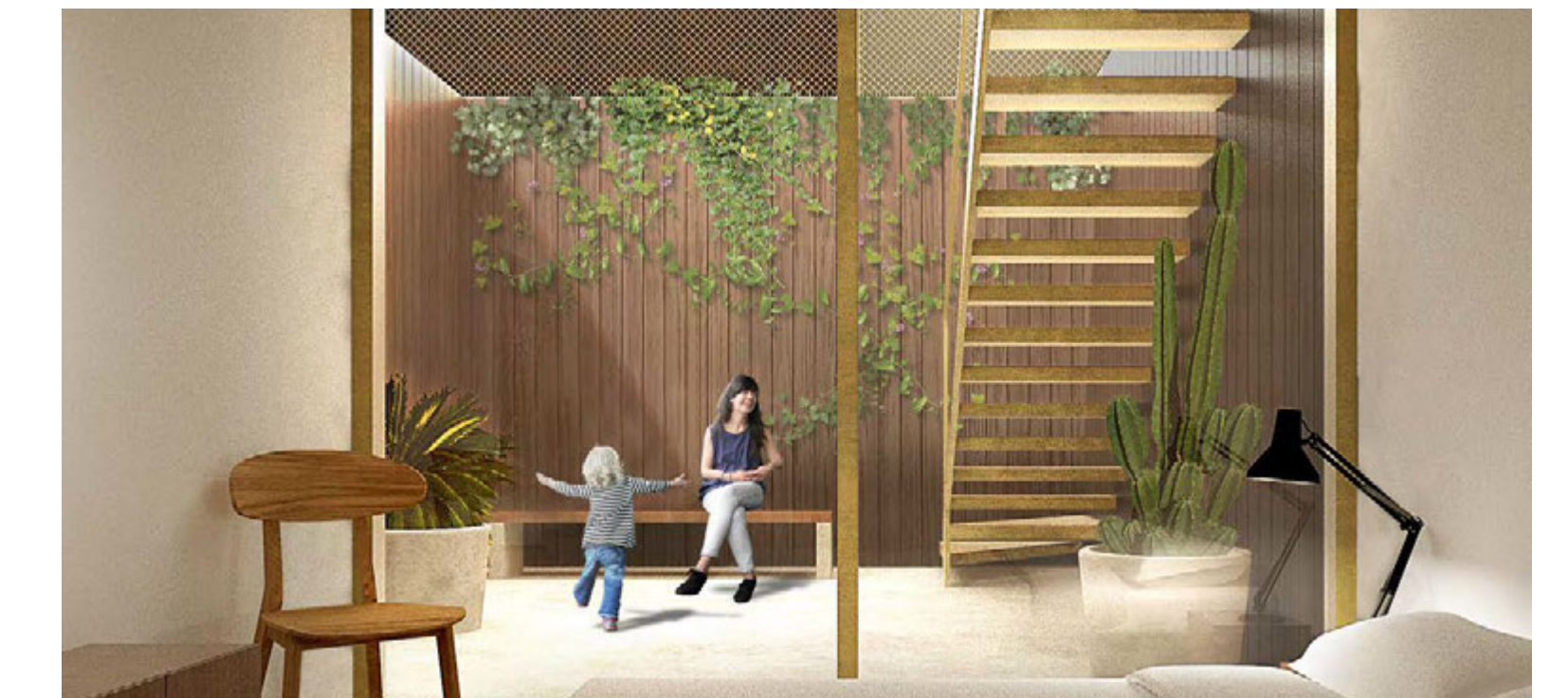
## Early ideas



What do you think of making your street more private? We can resurface the street, introduce better lighting, and planting.



How we can improve the entrances to your street by making them more direct and secured.



Examples of how your sunken back gardens could work.



How we can extend your homes whilst improving structural and maintenance issues.



What are your thoughts...



## Give us your opinion...

Residents generally like their homes and their flat layouts. What are your thoughts?

Some residents have said that they like the mews being private and secured from the street. What do you think?

What are the conditions of your kitchens and bathrooms? Would you like them improved?

Do you enjoy using the communal gardens?

Access is poor with no level or ramped access into the mews itself. Additionally there is a large step into the communal block entrances and no communal lifts. Within the flats there is a big step to get into your garden. This is unsuitable for wheelchair users. Would you like these things improved?

Do you have any issues with your windows, and what are they?

Is there enough space for your refuse collection and recycling space?

There are individual boilers in the living rooms of some apartments which are not enclosed and look untidy. Do you agree?

### What works:



Typical living room



Planters protect views from the school



Well kept front gardens

### What doesn't work:



Stepped entrances to flats



Exposed gas pipes



No level access into the Mews

## Early ideas



We could create more gardens and level entrances to your homes


### Examples of good design:



Shared surface with level access to homes



We could re-arrange the car parking to create more gardens

 What are your thoughts...

