

## Have your say...

Do you think that your home is in good repair with sufficient light and ventilation?

Do you experience any noise issue with your neighbours?

We have been told that the shared gardens are well maintained. Do you make use of the gardens?

Is your home warm enough in summer and cool enough in winter? Are your electricity and heating bills reasonable?

Do you think that you need to upgrade your kitchen or bathroom? How would you like to improve them?

A resident said that mould has appeared on his bedroom internal wall since the window upgrade and wall cavity insulation works. Do you have similar issues?

We noticed that there is no secure cycle store and limited recycling facility. Would you like better provisions for these?

Do you feel secure in your home? If not, could you explain why?

### Photos of your Close:



Traditional residential building type

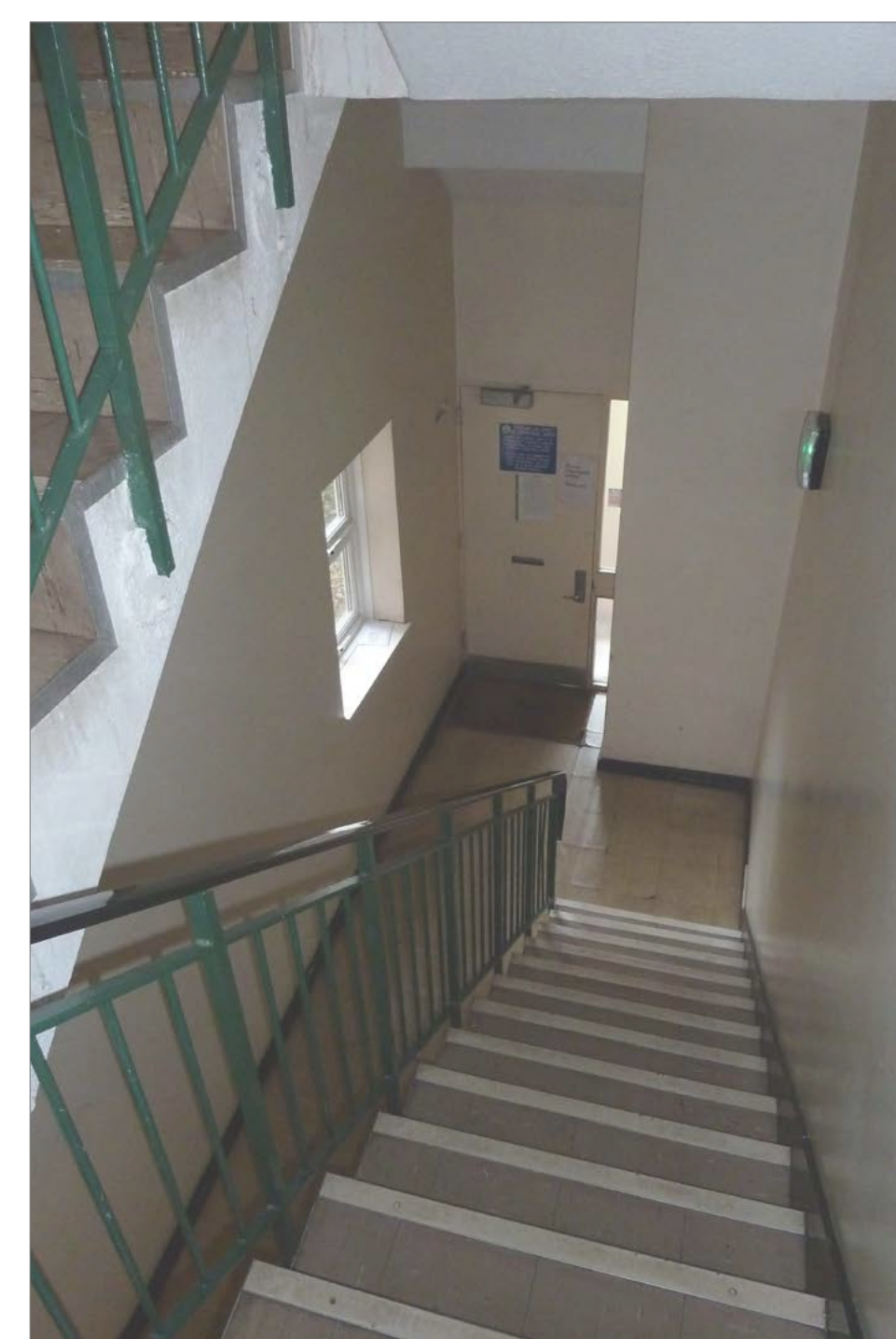


Apartment block front entrance

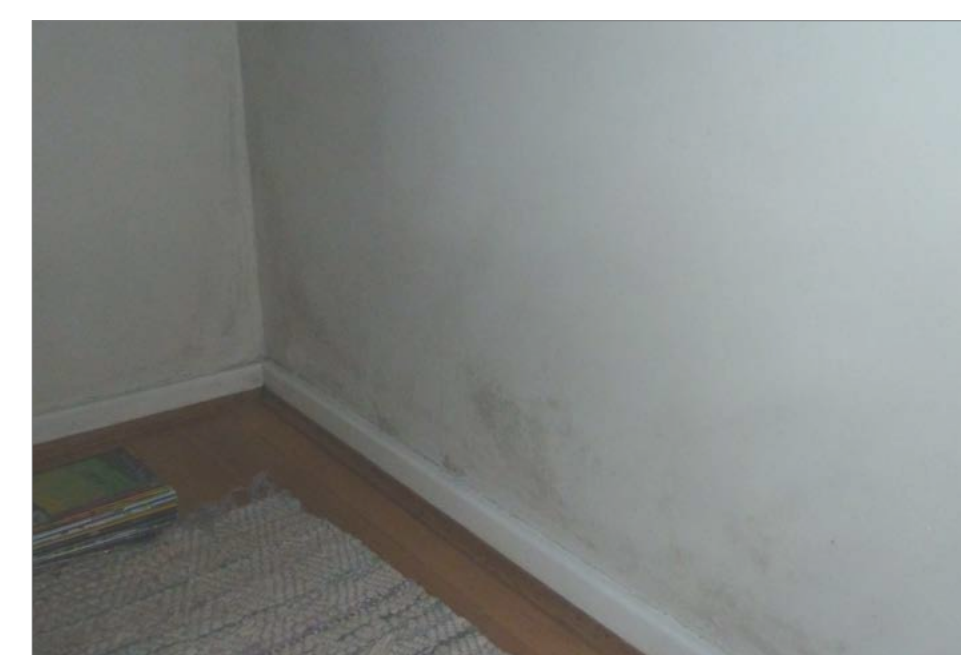


Apartment block rear garden

### Some existing conditions:



Block 2 communal stairwell



Mould in corner at base of bedroom wall of flat with communal stairwell

## Early ideas

### Aerial sketch view of Verity Close from north:



### Examples of good design:



Front threshold: more welcoming entrance



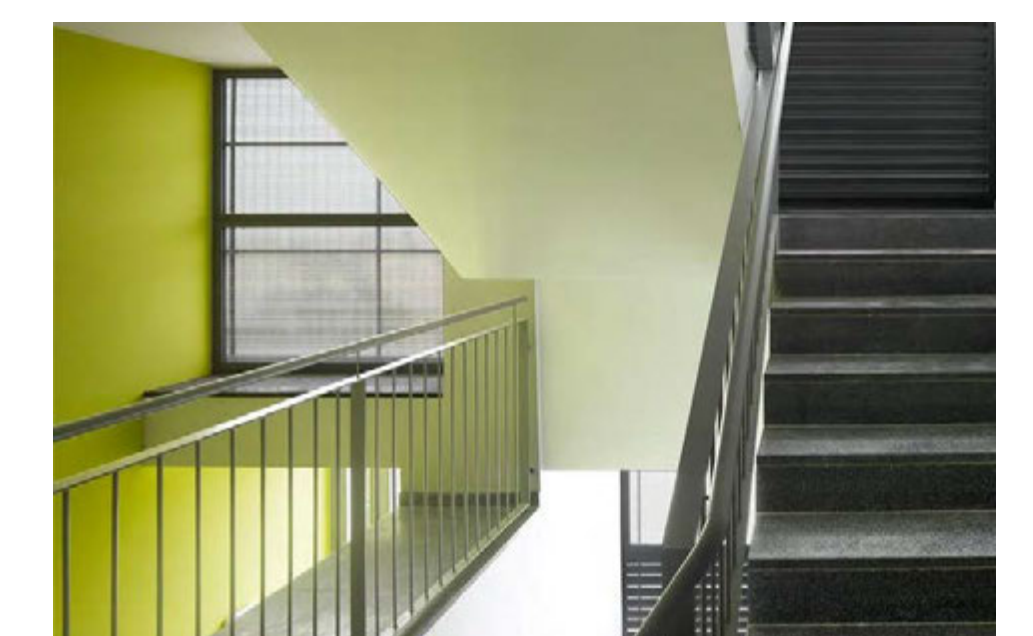
Rear patio door access to shared garden



PV solar panels on roof: reduce energy bills



Dormer window upgrade: more usable space



'Clean' palette of materials & lighting: more welcoming stairwell

### Some recent feedback from your neighbours...

- improve bathroom
- remodel kitchen layout
- add patio doors to shared garden
- provide individual metering

- spruce up common areas - new intercom; better lighting
- provide sprinklers

- improve refuse disposal provision
- more green and trees
- more options for meeting people



What are your thoughts...





## Give us your opinion...

Is privacy from your immediate neighbours as important as privacy from passers-by?

Bins and recycling are left out on the Close - should there be a central store instead?

Would the Verity Close neighbours be happy to share a garden, in addition to their private gardens?

Verity Close has high garden walls, fences & closed doors. Do you think it could be more welcoming?

How important is parking in the Close for you? Could it go elsewhere?

At Verity Close, we sense that the low density and generally quiet, tidy public areas makes this a pleasant place to live.

Does it feel like a *community* to you?

You have told us that the play area is like a prison. Who should have use of this courtyard area - the Verity Close community or the whole estate?

It is not easy to find your way through the Close. Would lighting and clear sightlines help? Should it really be a shortcut?

### Photos of your Close



Front garden of 'cottages'



Rear garden with established planting



Quiet and tidy

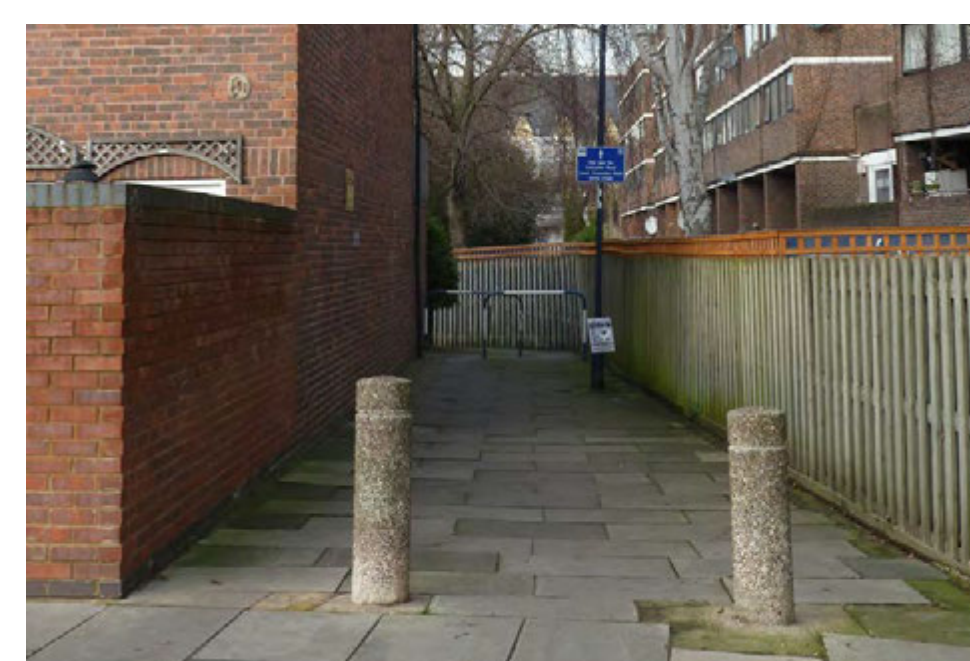
### Some existing conditions



Road/hard surfaces dominate the Close



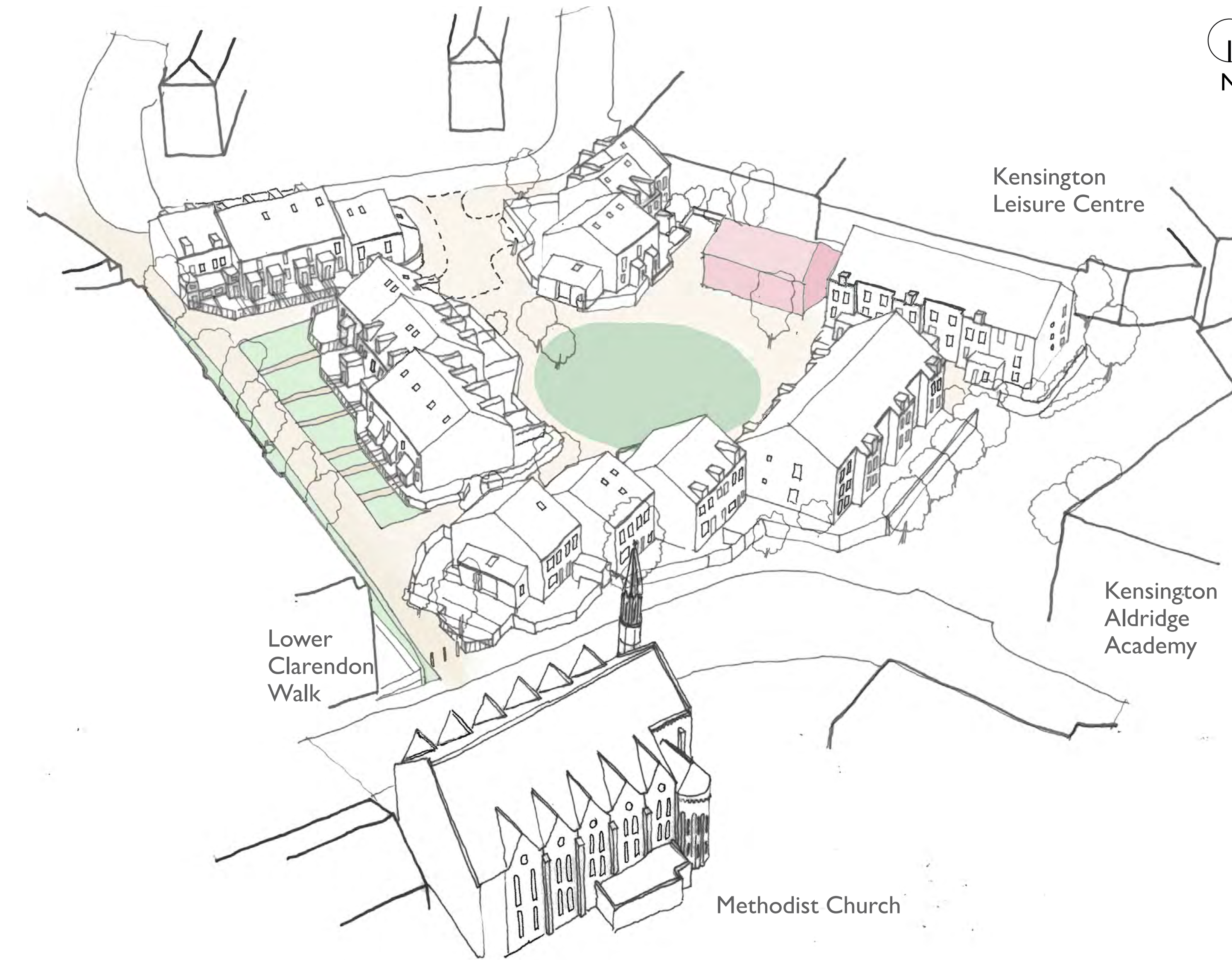
Play area tucked away and underused



Poor sightline from Dulford Street to Methodist Church

## Early ideas

### Aerial sketch view of Verity Close from north:



### Examples of good design:



A shared garden for all ages



A safe place to play freely



Edible garden for residents



Good quality street lighting & paving



A green oasis - the heart of the Close

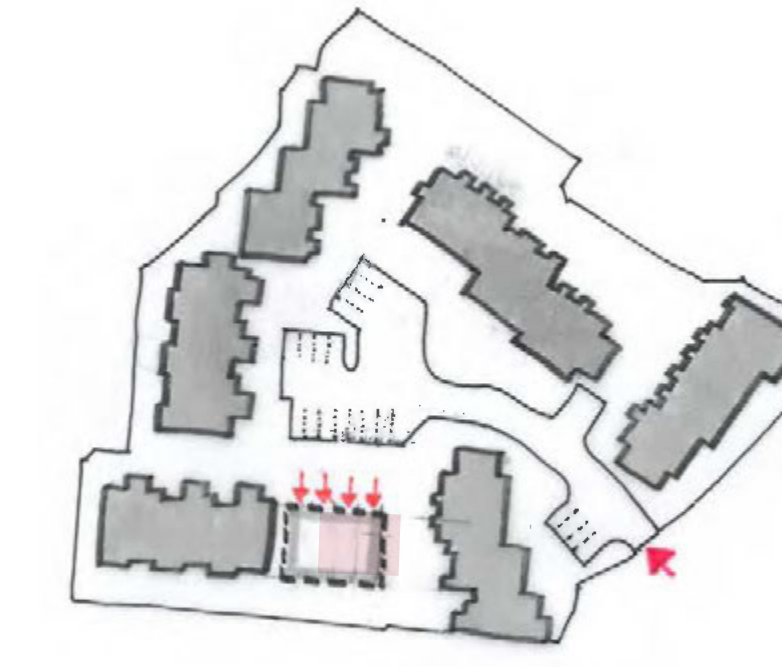
### Proposal 1

Consider reducing road and hard surface areas to improve landscape of the Close



### Proposal 2

Consider providing a few new low energy accessible homes to front onto the Close



### Proposal 3

Consider swapping play area with parking to create shared garden; reinforce green route to church



What are your thoughts...

