

Have your say...

We were told by some residents that they like the size of their flats, and the amount of daylight in the rooms. Do you agree?

Is your flat warm enough in the winter & cool enough during the summer months? Would you like more local control over the heating in your flat?

Do you think the balconies are well used? Some residents have suggested the balconies could be glazed in or covered. Do you agree?

How are the acoustics in your flat? Can you hear noise from the walkway or your neighbours?

The residents we spoke to have highlighted problems with condensation in their flats, and would like double glazing. Do you agree? Do you feel you need more opening windows?

Does your flat feel cramped? Would an "open plan" living arrangement make your home feel more spacious?

Some residents have told us they would like a choice of front door, and would like to see the inside of the walkways redecorated. Do you agree?

Is your home in good repair? Do you think that you need to upgrade your kitchen or bathroom? Some residents we met would like high pressure showers & more storage space in their kitchens.

Existing homes



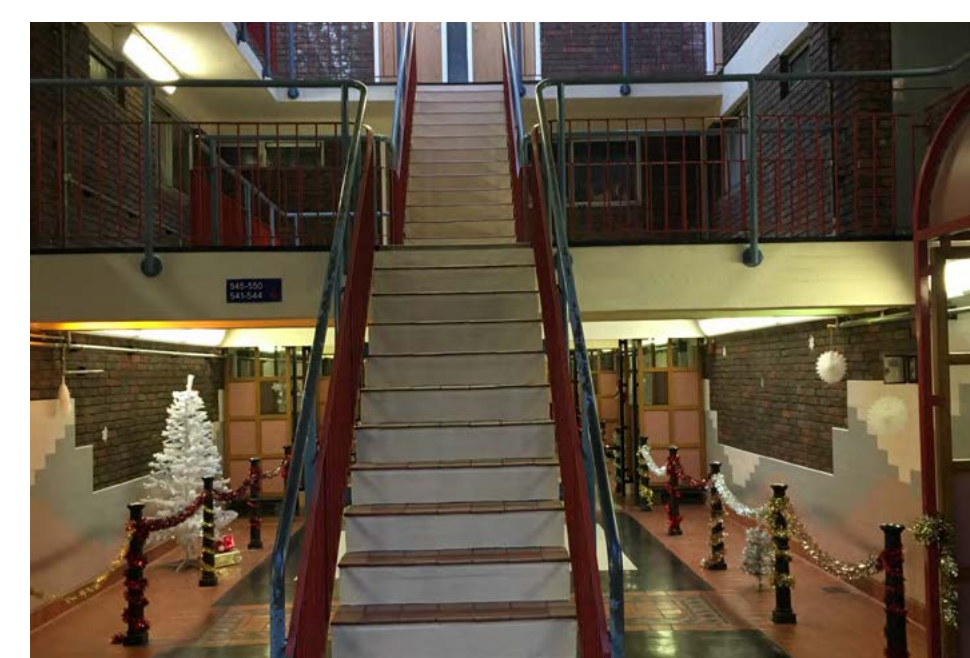
Internal corridors



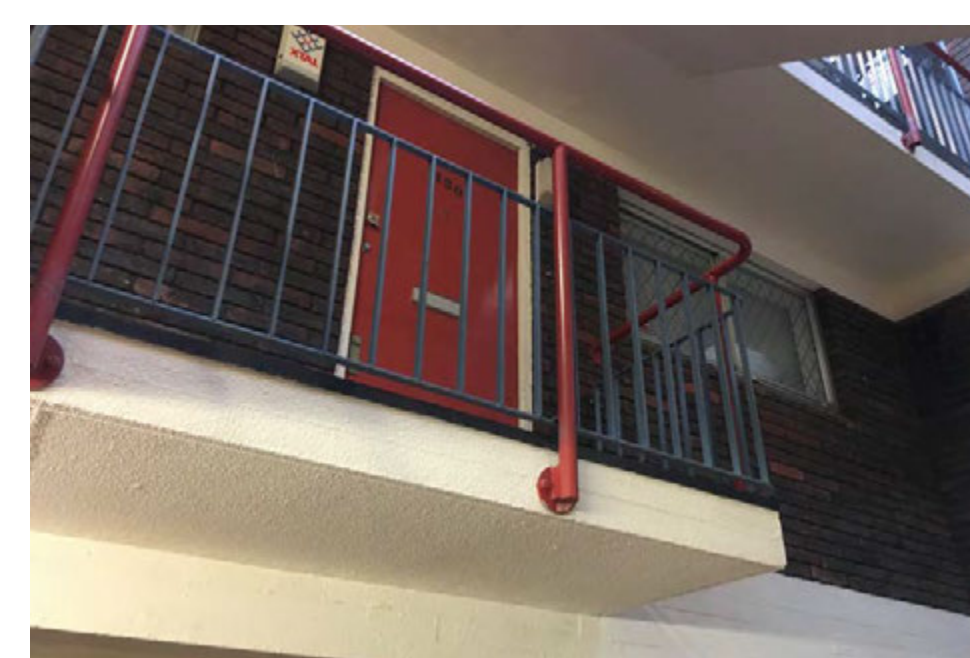
Stairwell entrances



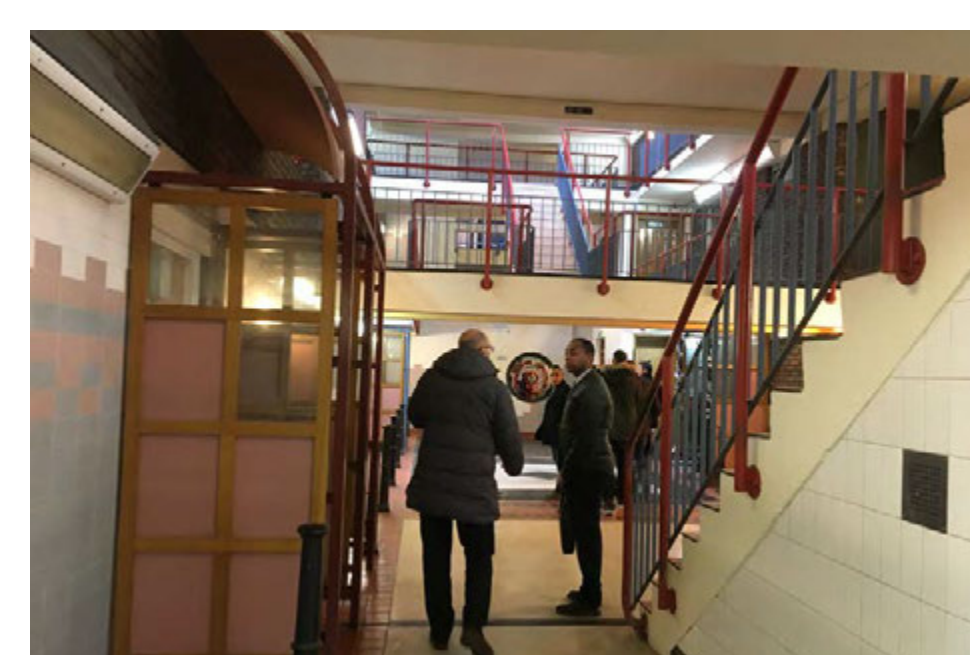
Walkway divider



Main stairs



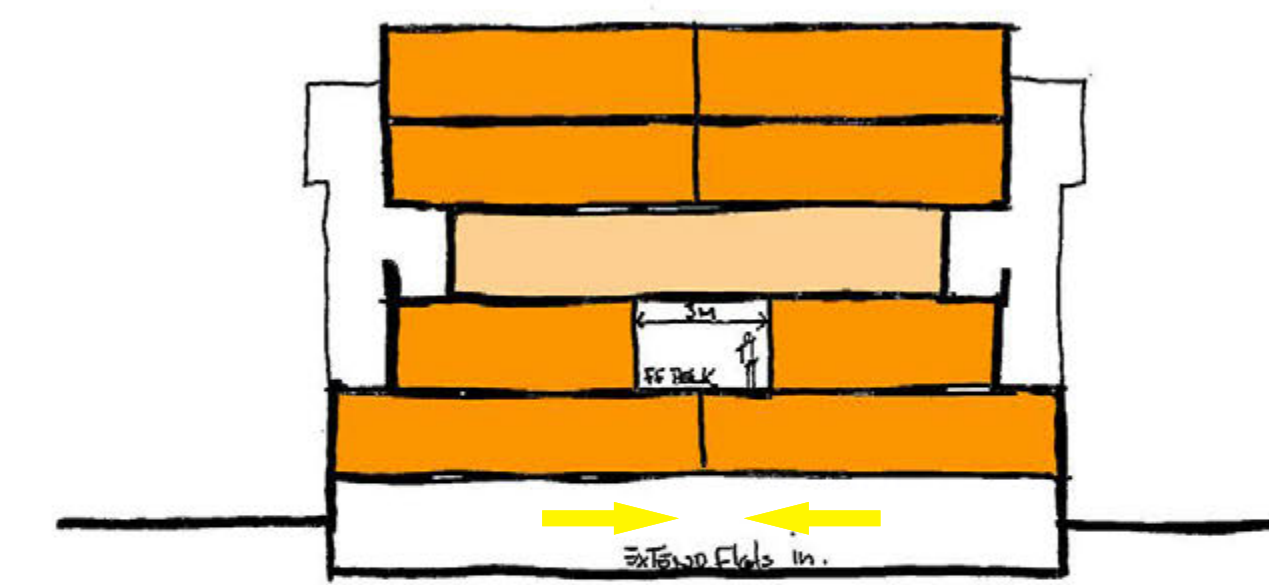
Front doors



Main walkway level

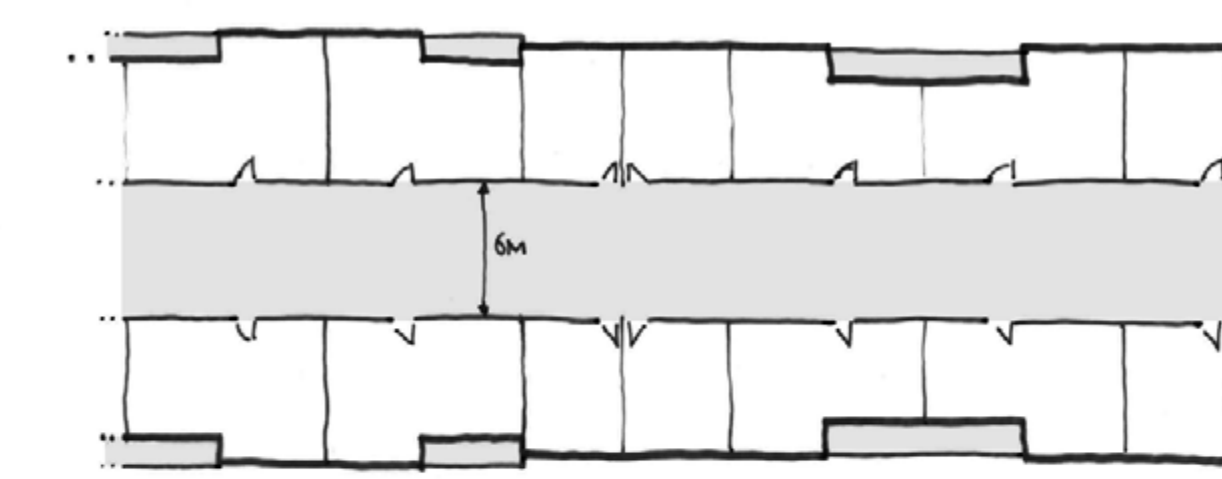
Early ideas: Bigger Homes

Growing Inwards



Proposed Walkways Section

Ground floor and first floor flats growing in to provide additional floor space. Additional space provided at the back of the flats can be used for storage or additional bathrooms if required.



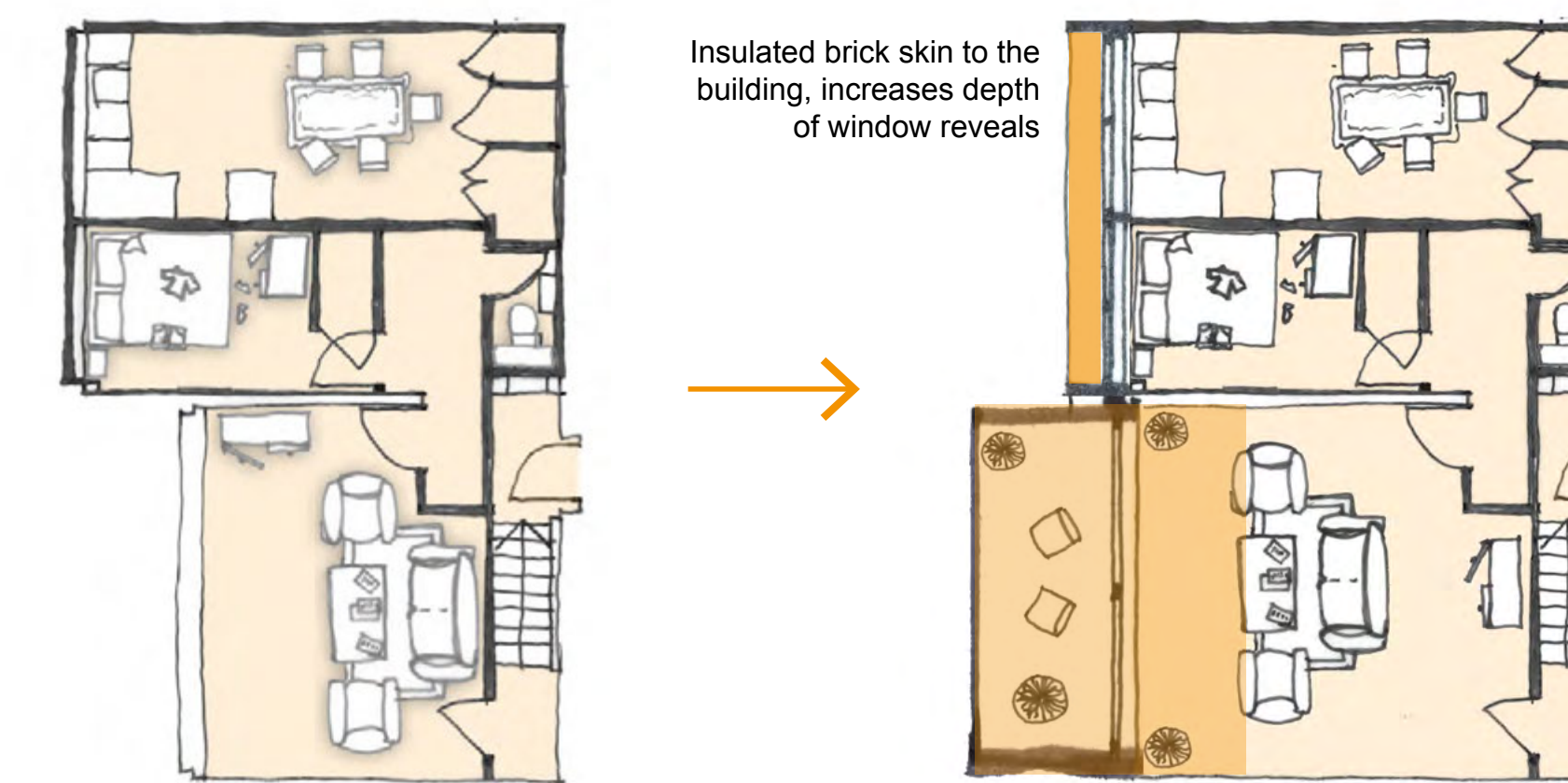
Existing deck level plan (first floor)



Proposed deck level plan (first floor)

Existing homes could be extended inwards into the existing circulation spaces to create more storage or space to store bikes.

Growing Outwards



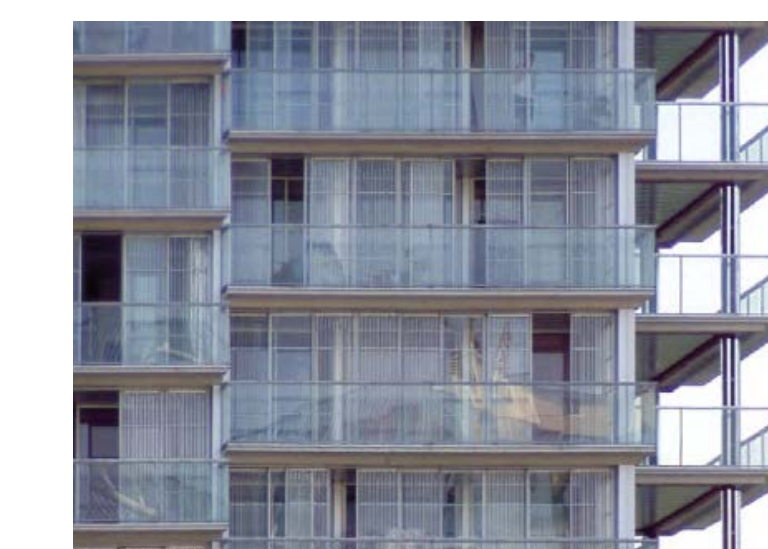
Typical Floor Plan - Existing

Typical Floor Plan - Proposed

More usable space could be created within homes by extending balcony areas



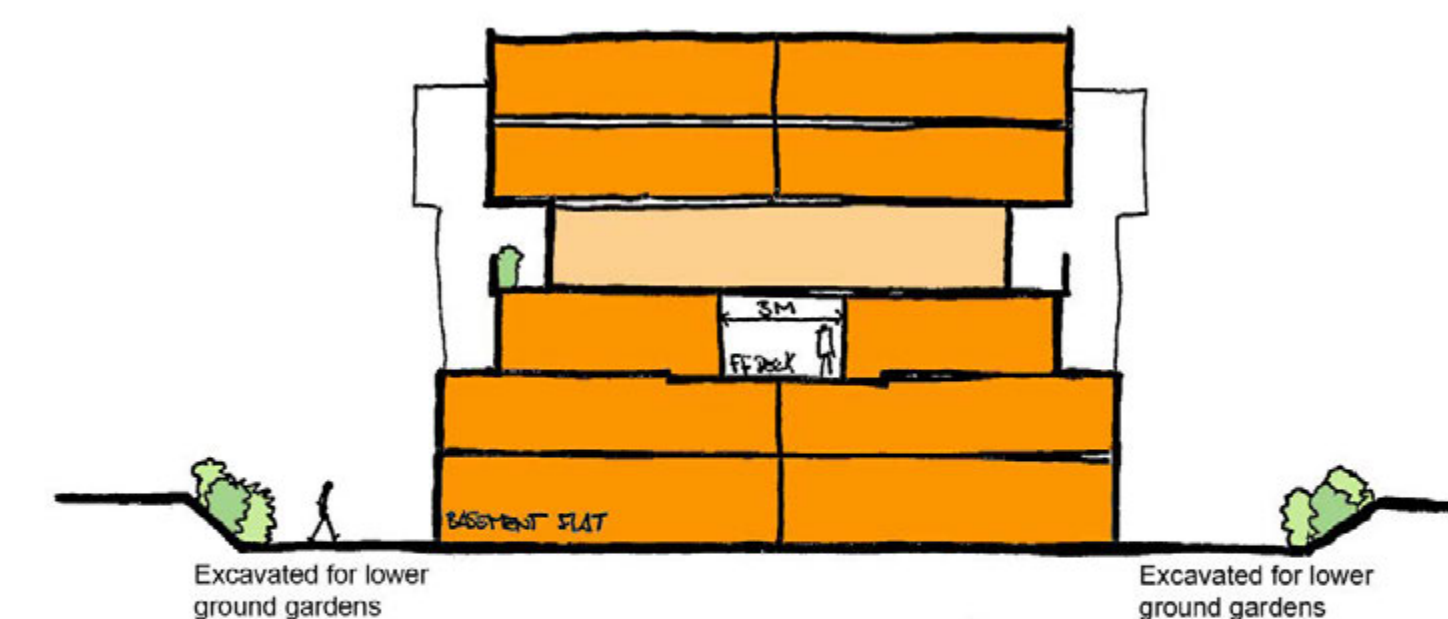
Larger homes formed by extending outwards to form wintergardens over some or all of the elevation



Example of a well designed balcony / wintergarden extension

Existing homes could be extended outwards by infilling balconies or creating new wintergardens on the outside of the buildings.

Growing Downwards



Proposed Walkways Section

Basement could be utilised for basement flats.



Existing homes could be extended down to basement level and new lightwells formed to bring in light and ventilation

What are your thoughts...



Give us your opinion...

The residents we met said they like the sense of community in the estate and their homes are in a great location. How could this be improved?

Some residents said they would like secure bicycle storage near their homes & more space for recycling. Do you agree?

We were told by residents we met that external lighting needs to be improved around the buildings, and there should be more benches and places to garden. Do you agree?

Some residents told us the signage is confusing and it is hard for visitors to find the right entrances to the building. Do you agree?

Some residents we met would like easier access to the gardens. Do you think the communal gardens are well used? Do you think the gardens should be open to everyone?

Some residents would like to see the intercom for the building upgraded and lifts introduced into the building. Do you agree this should be a priority?

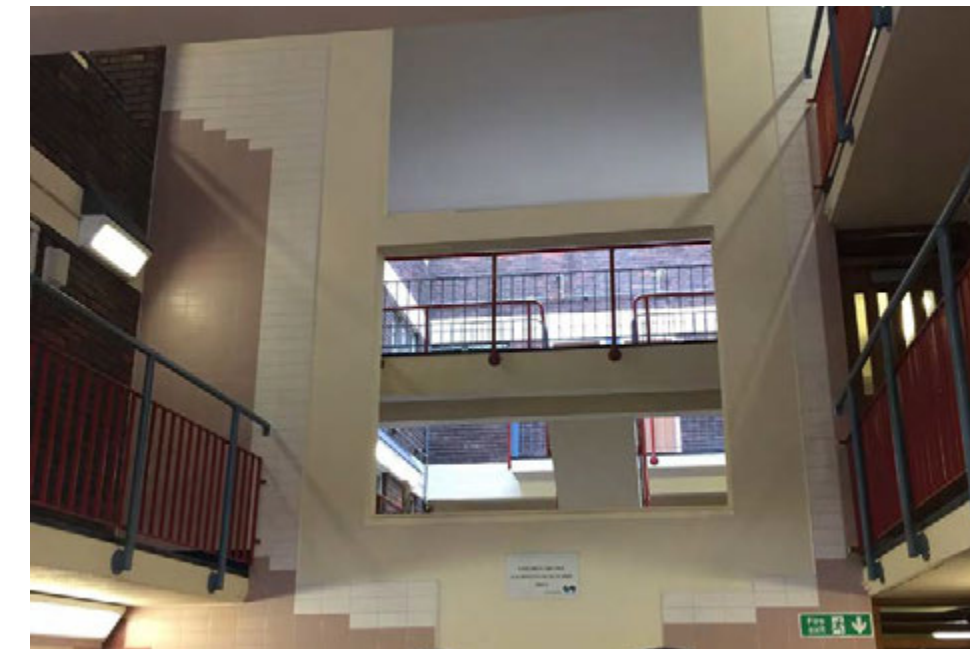
Do you think there are sufficient playgrounds, or spaces for young people to play?

We noticed the ramps are blocking access & views into the communal gardens, and some residents have suggested that they are removed to create easier access to the buildings. Do you agree the ramps should be removed?

Existing buildings



Glazed rooflights



Daylighting to corridors



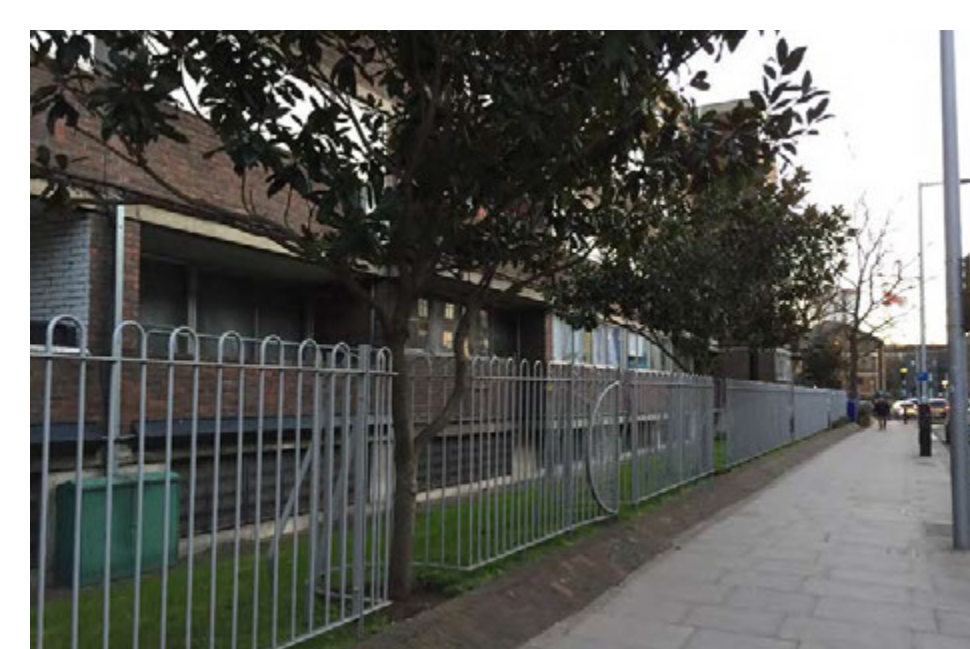
External services



Communal gardens



Ramped entrances



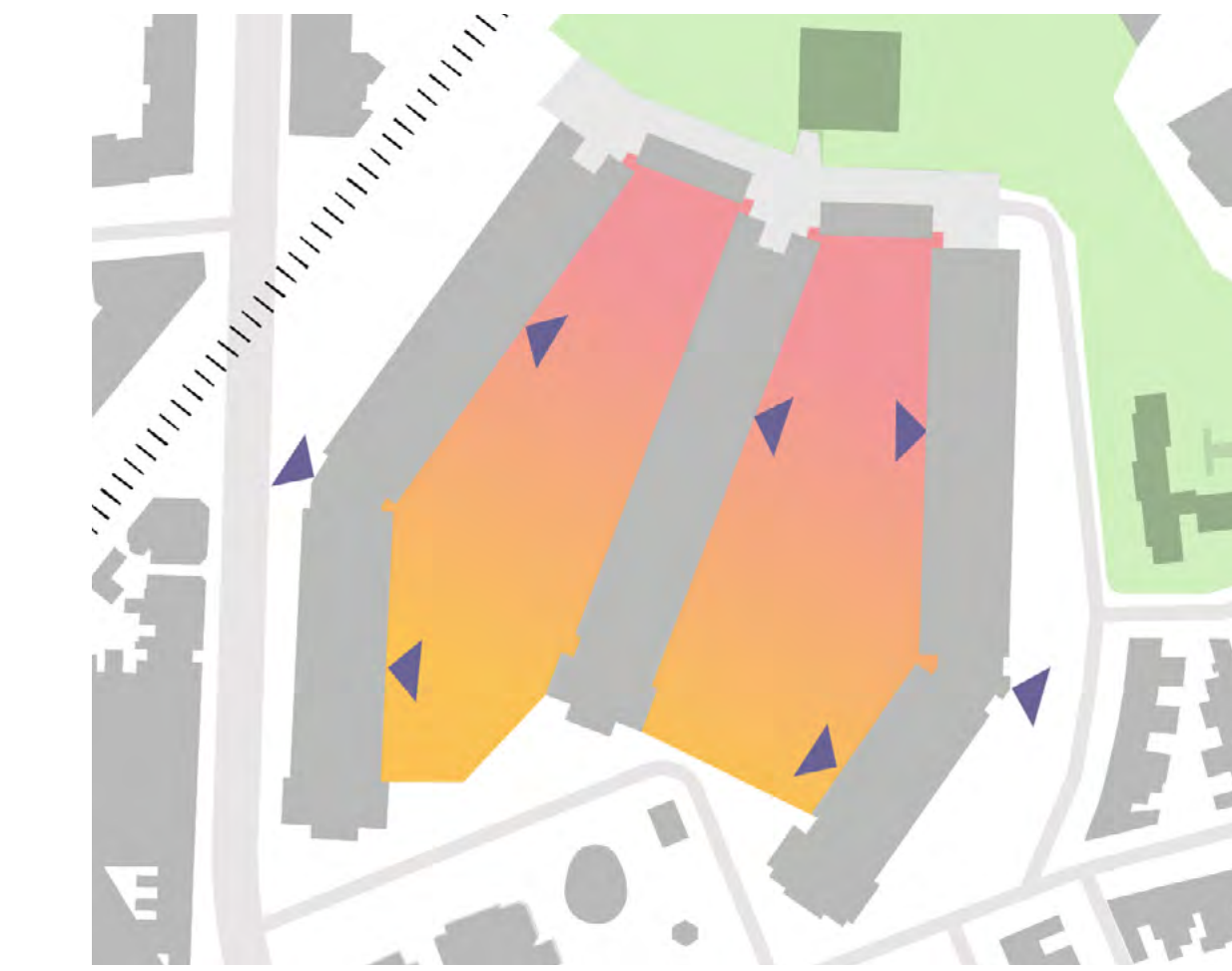
Railings to Bramley Road

Early ideas: Improving Access

Use of the Garden Spaces



Public | Residents use Entrance (stairs, lifts)



Residents only use Entrance (stairs, lifts)
Public | Residents use



Residents only use Entrance (stairs, lifts)
Public | Residents use Possible new entrance
Garden access

Communal Entrances

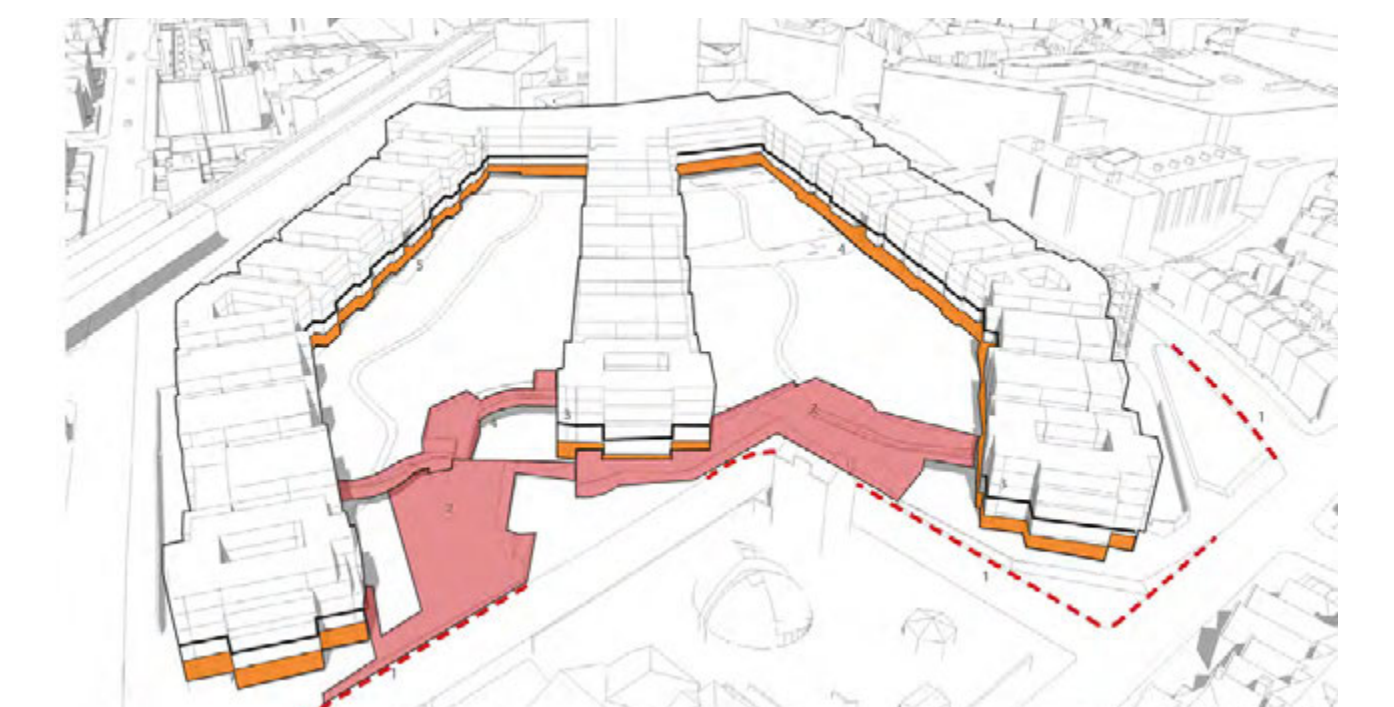


Existing ramped entrances within courtyards



New entrances to stairwells could be formed at courtyard level

The use of the courtyard spaces between buildings and how the buildings are accessed could be improved. Courtyards could be for use by residents only or open for all to use. Courtyards could be made easier to access by removing existing ramps and moving stair entrances to courtyard level.



Removing existing ramps within courtyards

Private Entrances



Existing separation of flats from the courtyard



Example of well designed steps to link lower flats to courtyard spaces



New steps could be added to lower flats to link them to garden level. These could be new front entrances or access to new private gardens for flats formed within the courtyards.

What are your thoughts...

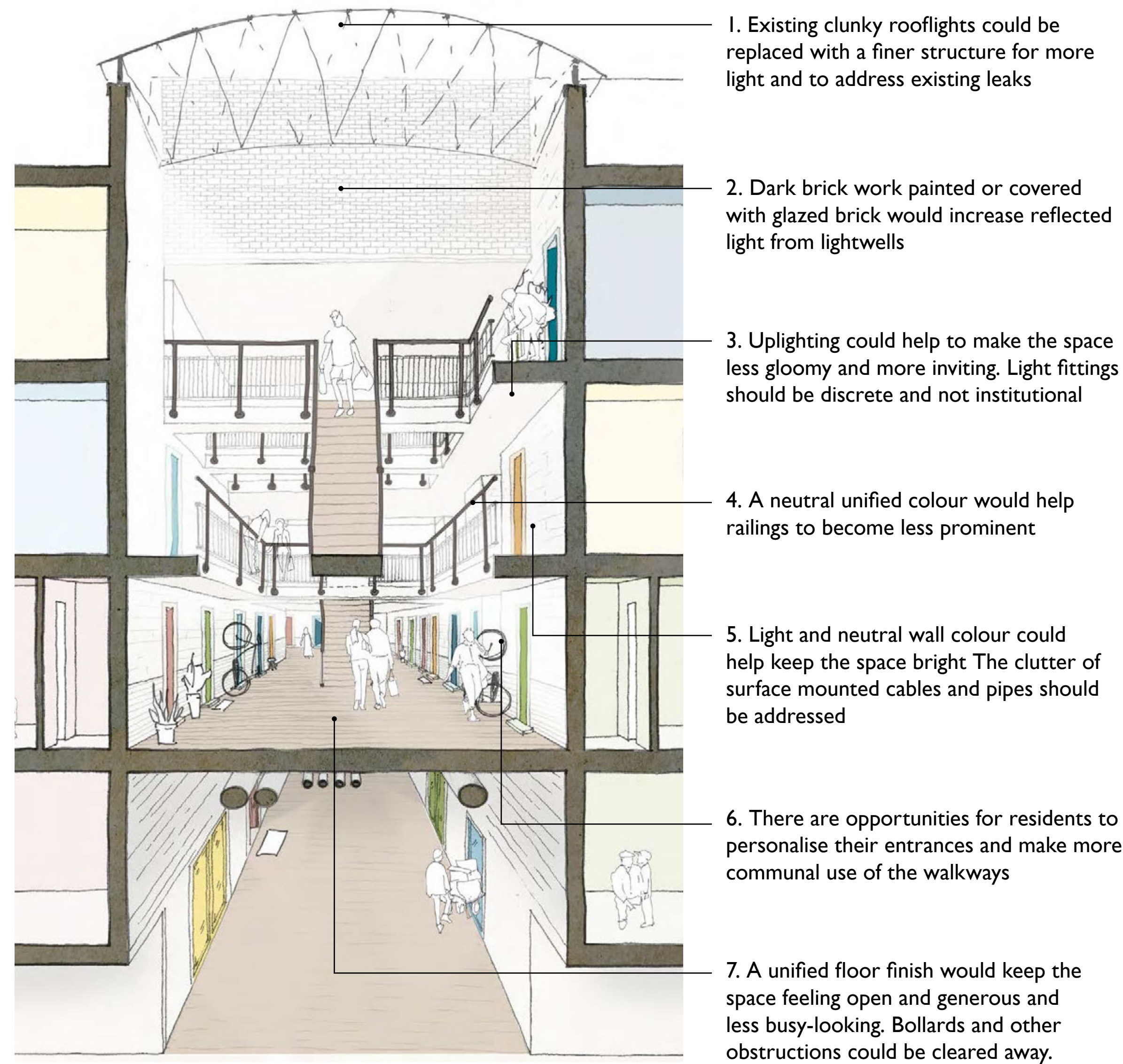
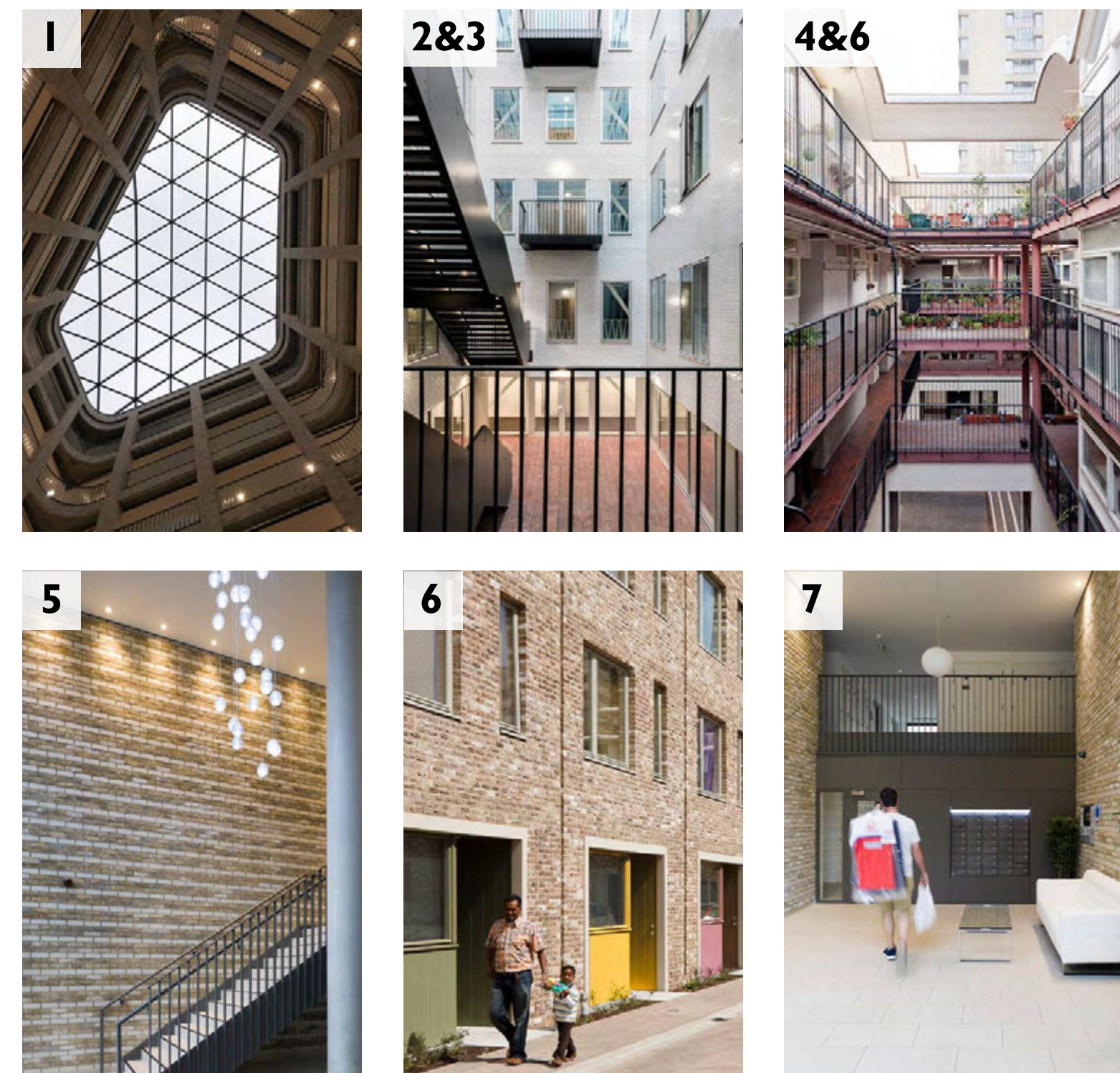


Early ideas: Improving Circulation Spaces

Existing Circulation Spaces

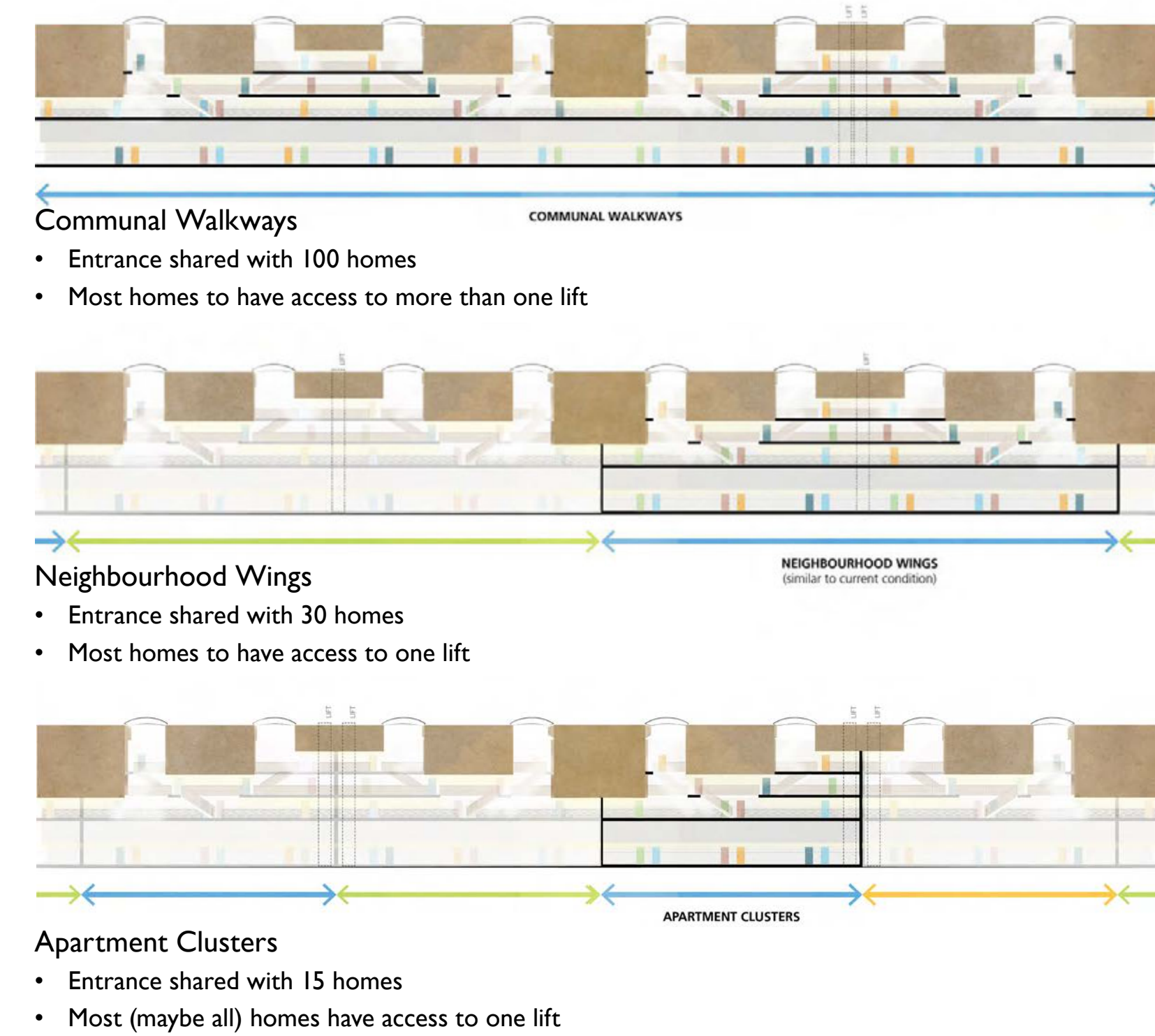


Examples of Good Design



Changes could be made to improve existing circulation spaces without the need to change individual homes.

The Route to Your Home



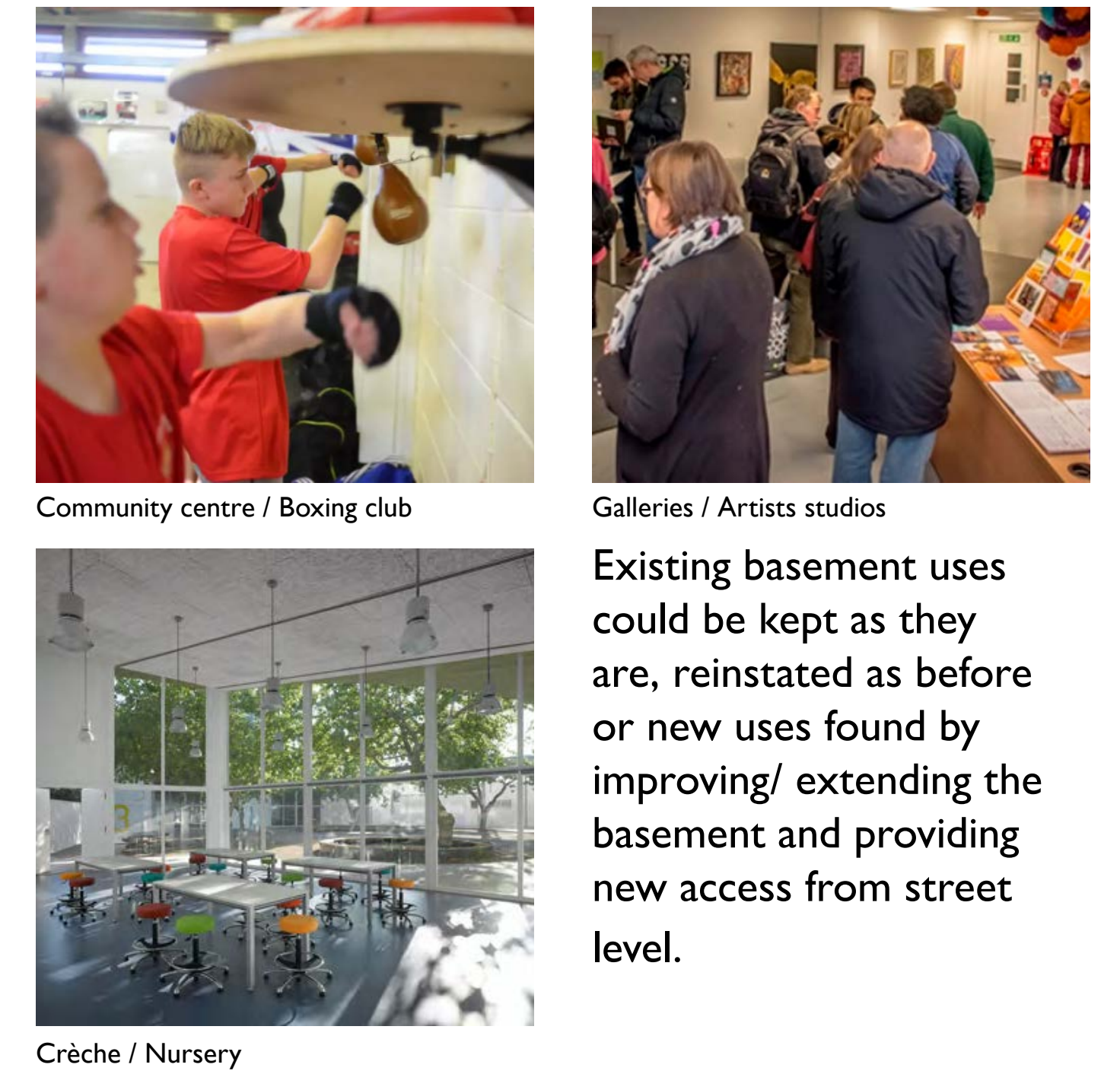
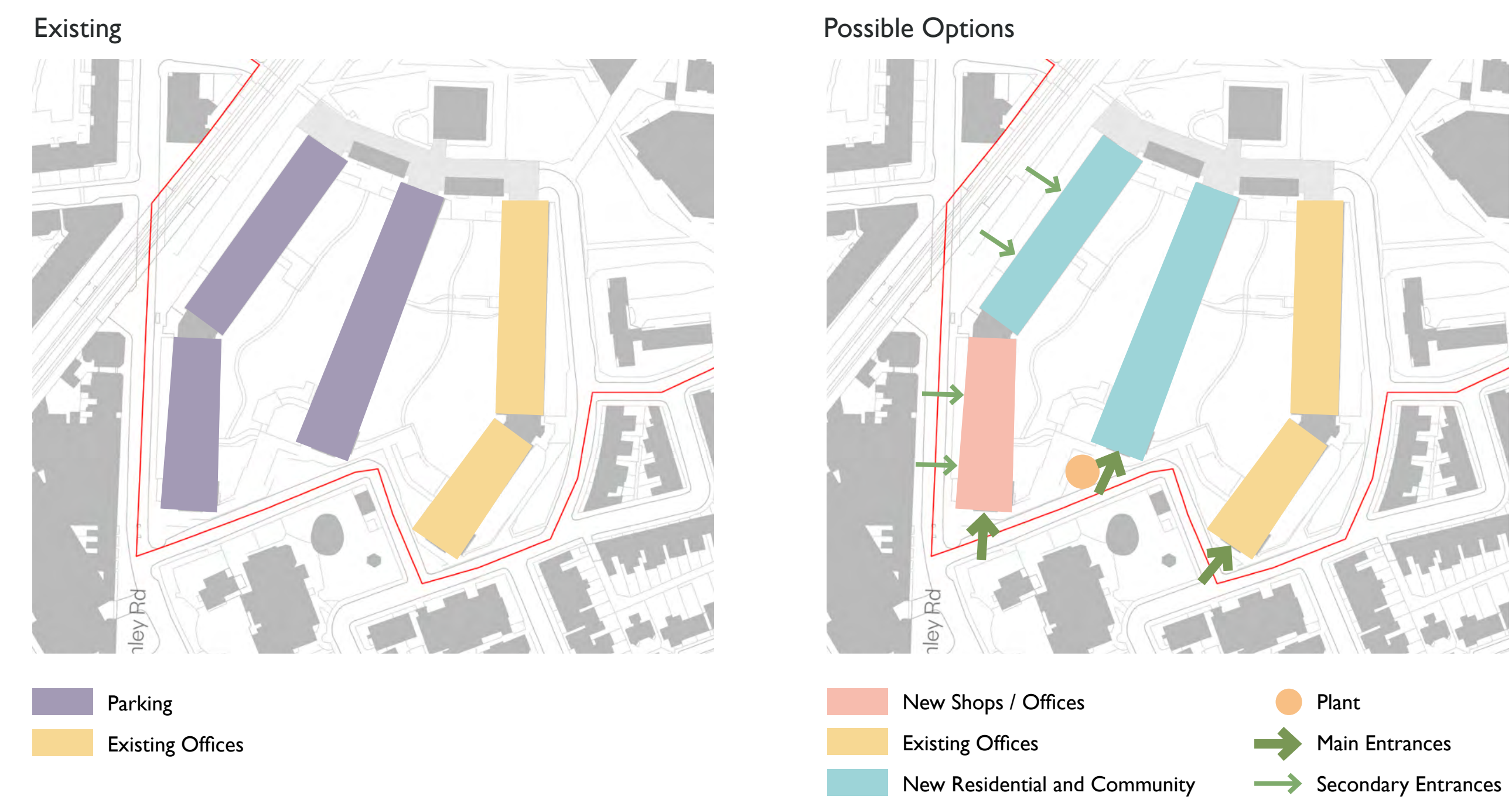
Bigger changes could also be considered to break up the existing circulation so that smaller numbers of homes share circulation space.

This diagram shows the walkways divided into smaller clusters of homes around the atrium spaces. Additional entrances from the street would be introduced to reduce the number of homes in each cluster. Do you think this is a good idea? Moving all entrances to the street-side would make the communal gardens more private, do you agree with this?

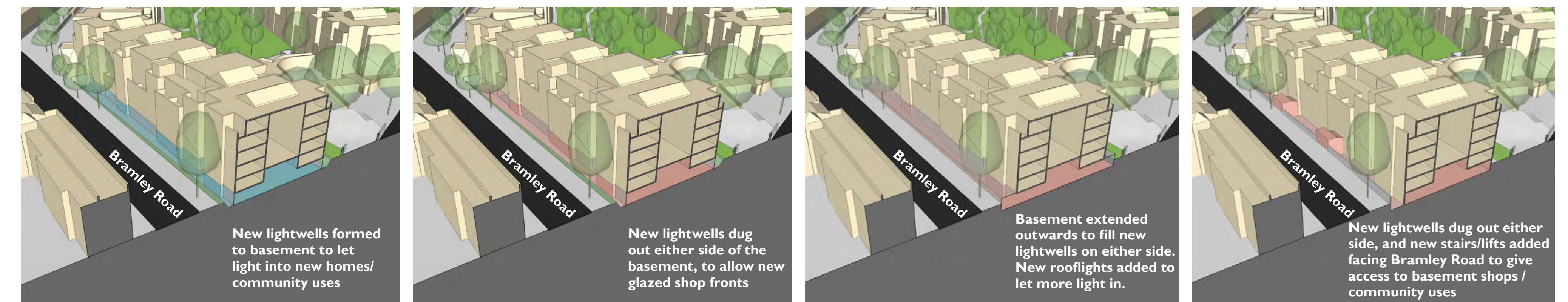
What are your thoughts...

Early ideas: Basement Uses

Options for New Uses



New Access / Extensions



Key Corners



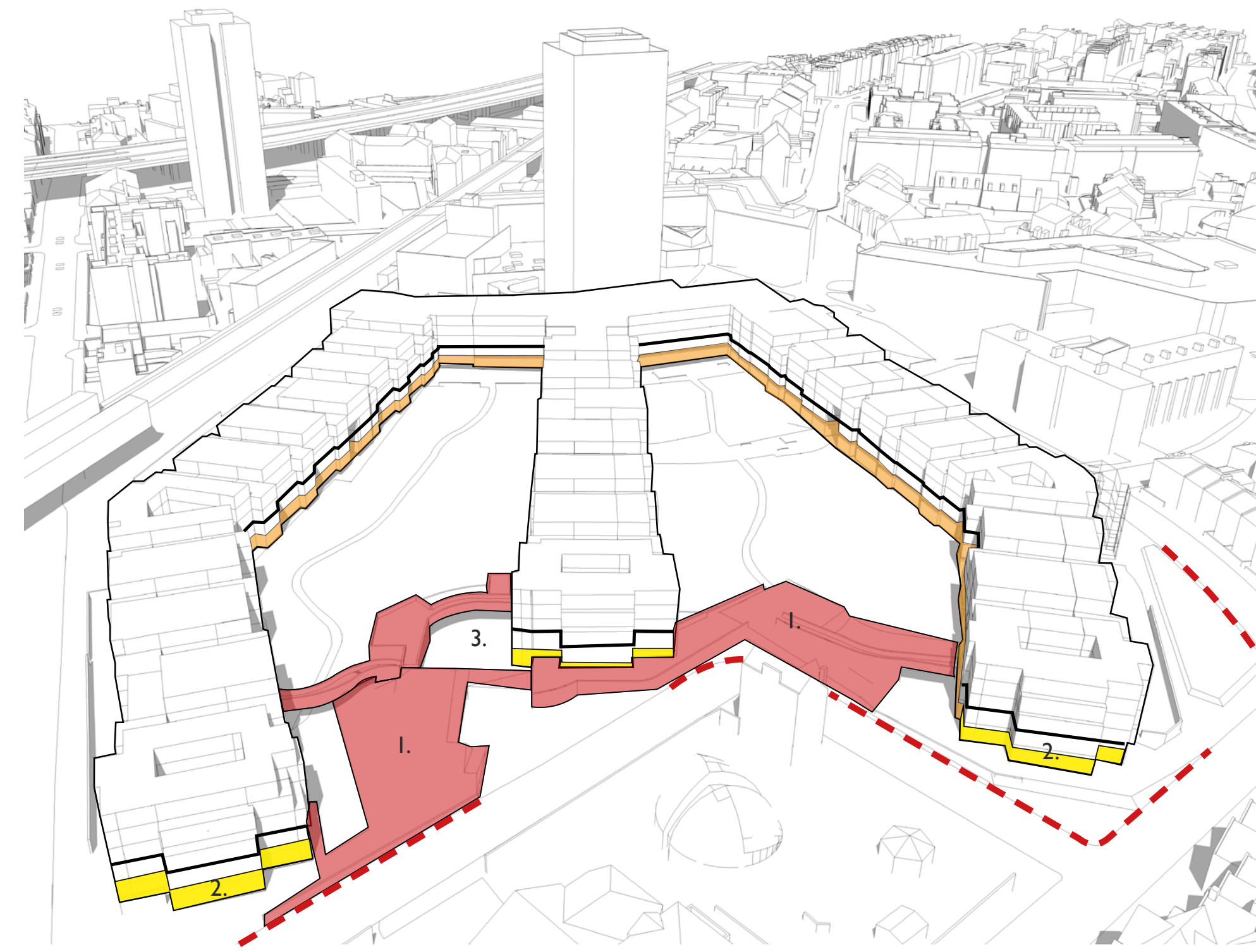
The end of Hurstway Walk could be converted into a large shop or community facility to mark the corner and provide overlooking along Whitchurch Walk

What are your thoughts...



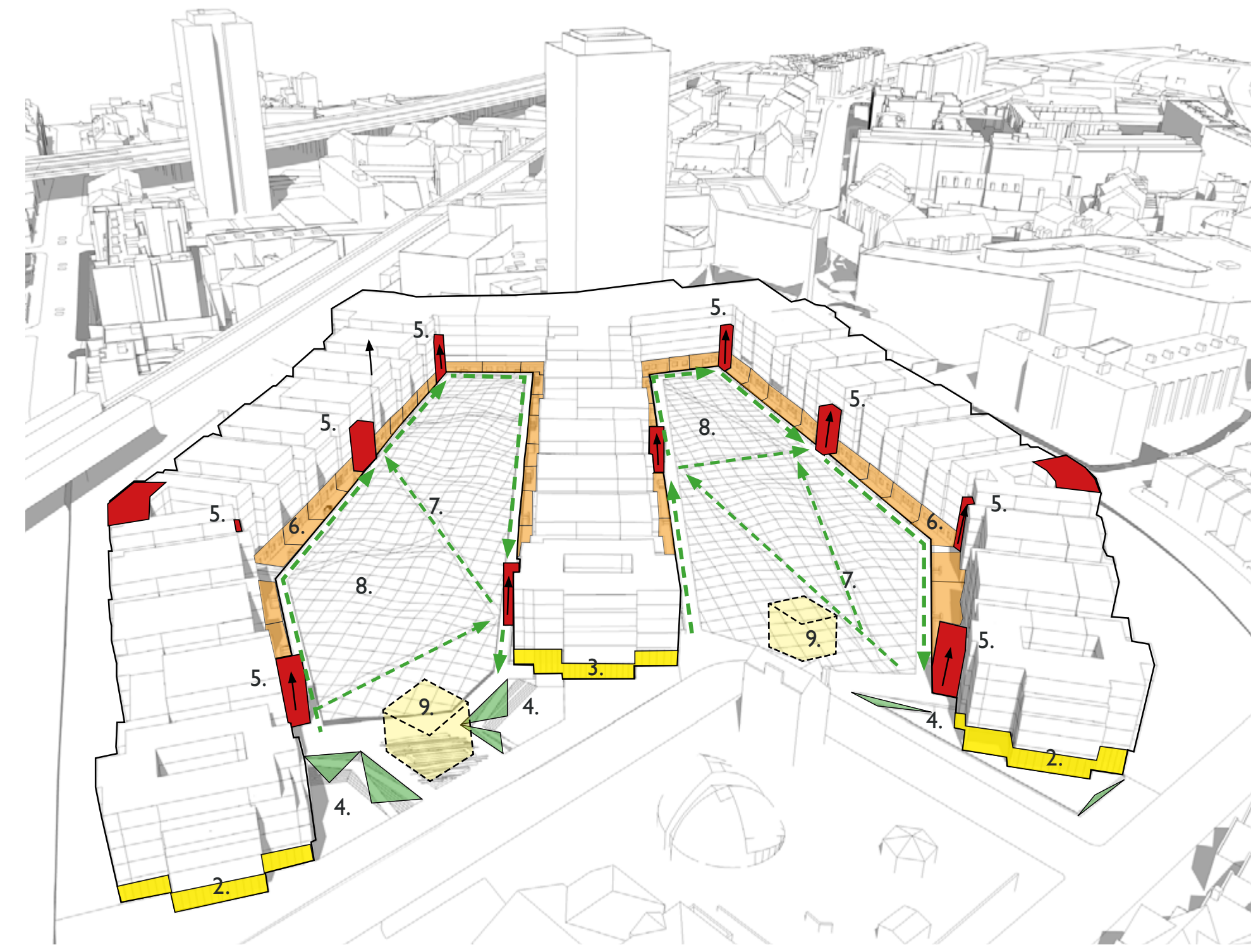
The Walkways (Barandon Walk, Hurstway Walk, Testerton Walk)

Early ideas: Improving your Public Space



Existing condition

- 1. What do you think of removing all the ramps and level changes to the entrances? This can help create a more open relationship with the street.
- 2. How do you feel about improving the street frontage by placing community facilities at the ends of the walkways?
- 3. How do you feel about relocating the nursery to one of these new community facility locations?



Proposed ideas

- 1. What do you think of removing all the ramps and level changes to the entrances? This can help create a more open relationship with the street.
- 2. How do you feel about improving the street frontage by placing community facilities at the ends of the walkways?
- 4. We can ramp down to new community squares at the fronts of the community centers, how do you feel about this?
- 5. New stair towers can then be used to take you to 3 out of the 4 levels. How do you feel about introducing lift access to these new towers?
- 6. We could introduce new homes to the basement level, this could help increase activity in the park. How would you feel about new homes at basement level?
- 7. The entrance towers could be connected by new pedestrian routes which can help light up the park. How would you like your park used?
- 8. We can introduce new playgrounds and sports facilities to the park, what would you like to see there?
- 9. How would you feel about new buildings with community facilities being introduced? This can help frame and enclose the parks.



Early ideas of how your communal spaces could work better.

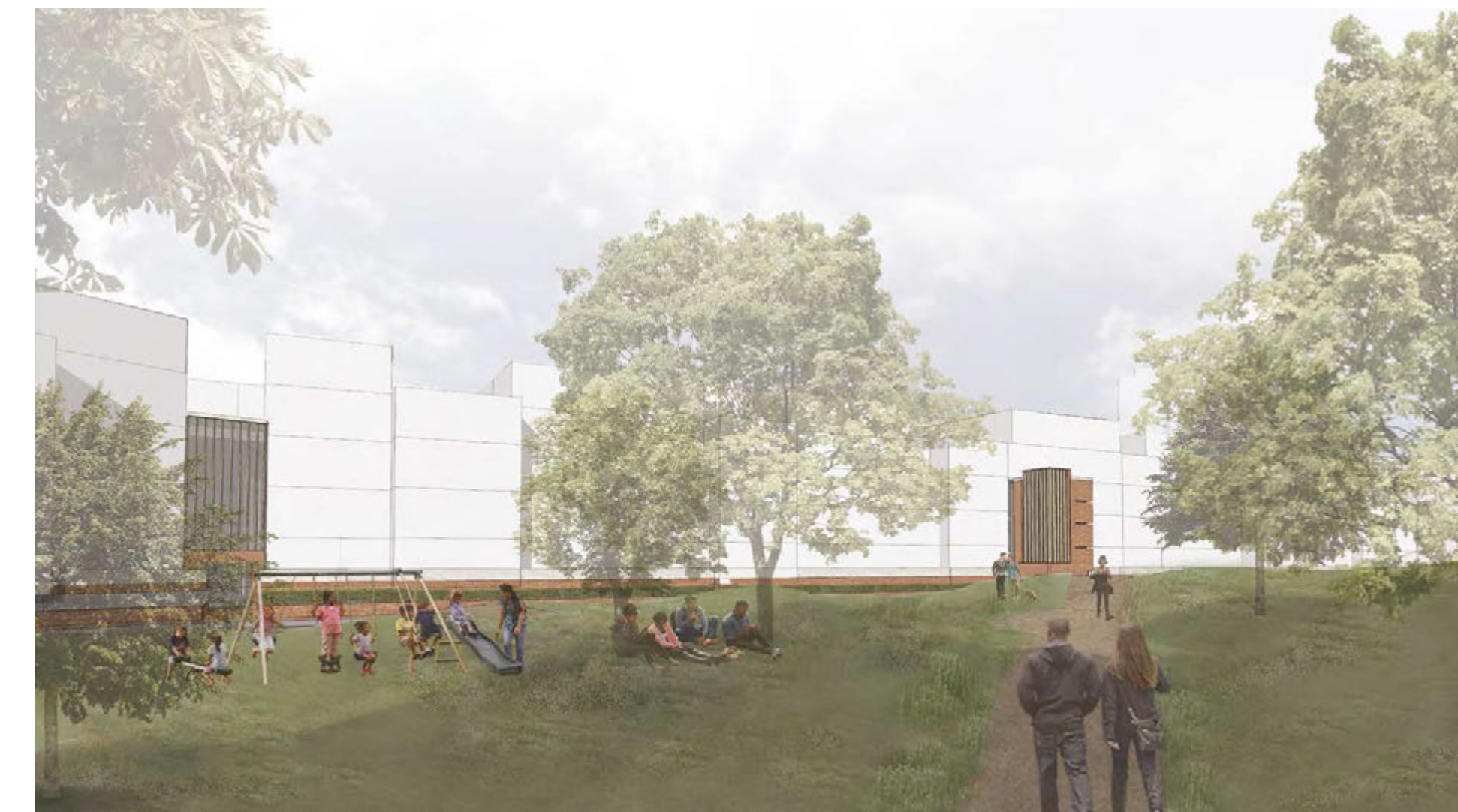
Early ideas...



Would you like to see a new community building?
What facilities would you like to have there?



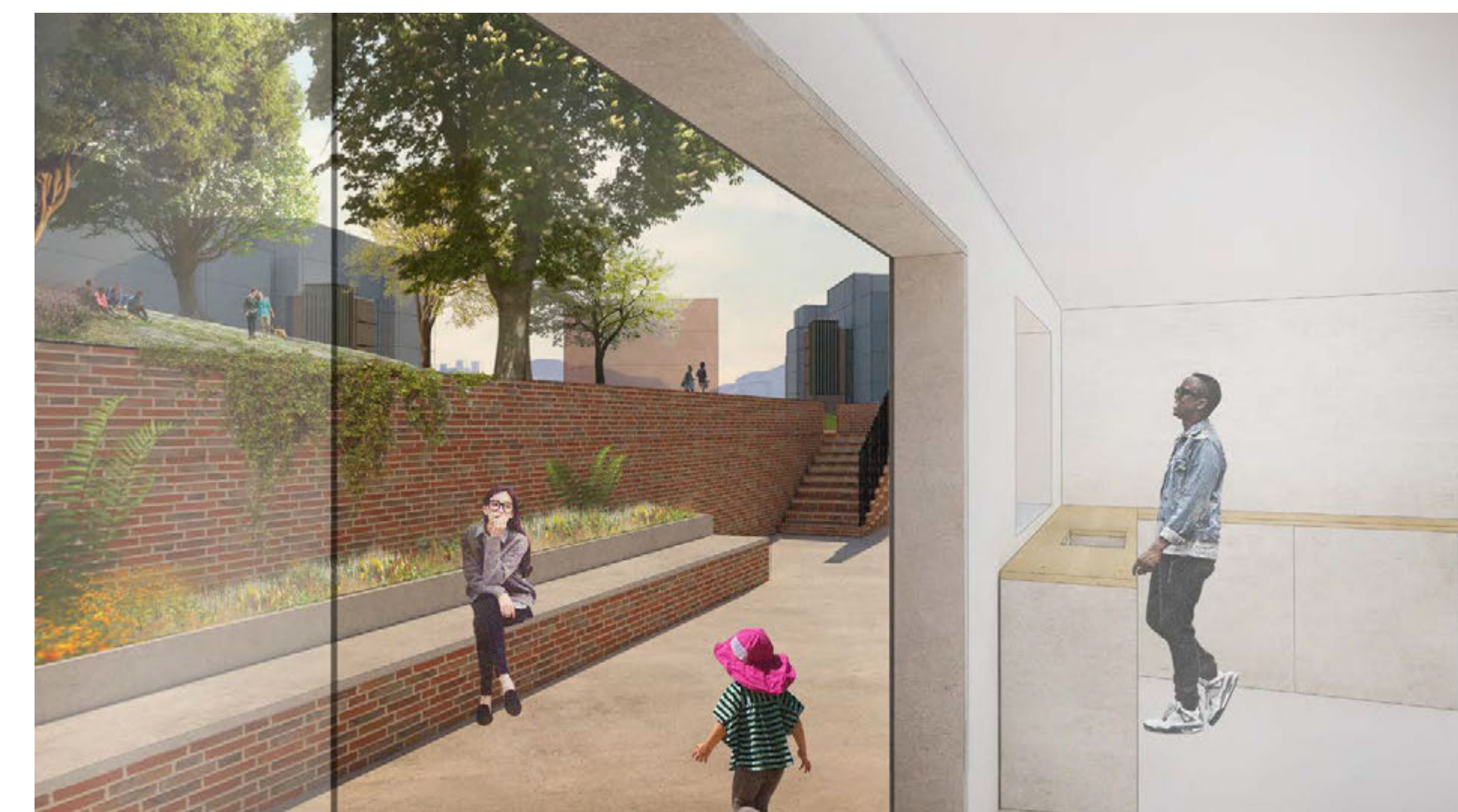
What if we opened up the walkways to the street front?
Would new community squares be a good idea?



Would you like to see the green spaces more connected?
Do you like the idea of connecting new pedestrian routes to new stair/lift towers?



Examples of how park lighting can improve the quality of the parks at night.



How flats on the basement level could work.
Do you like the idea of creating new homes at the basement level?



How the internal spaces can be reimagined.
What do you think about opening up the internal walkways to the basement?



What are your thoughts...

