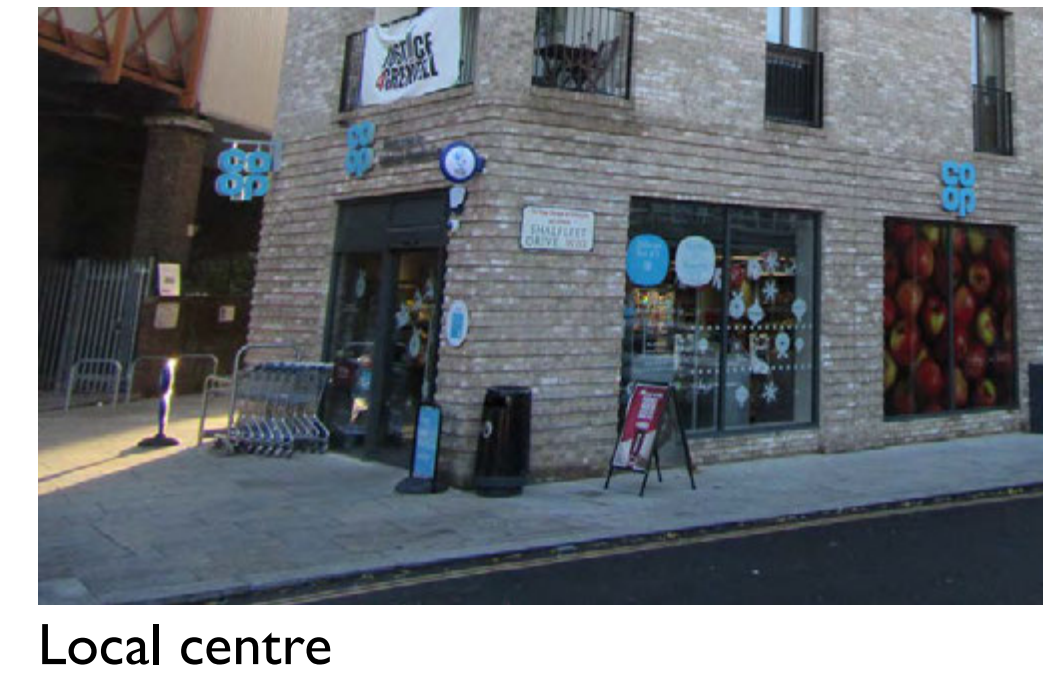
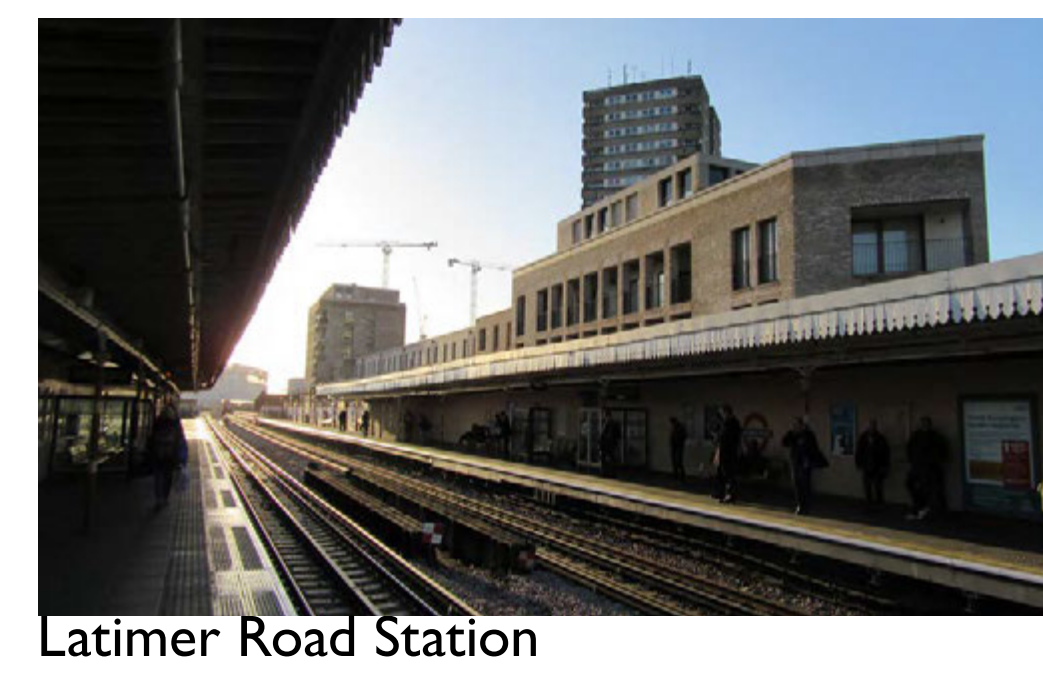
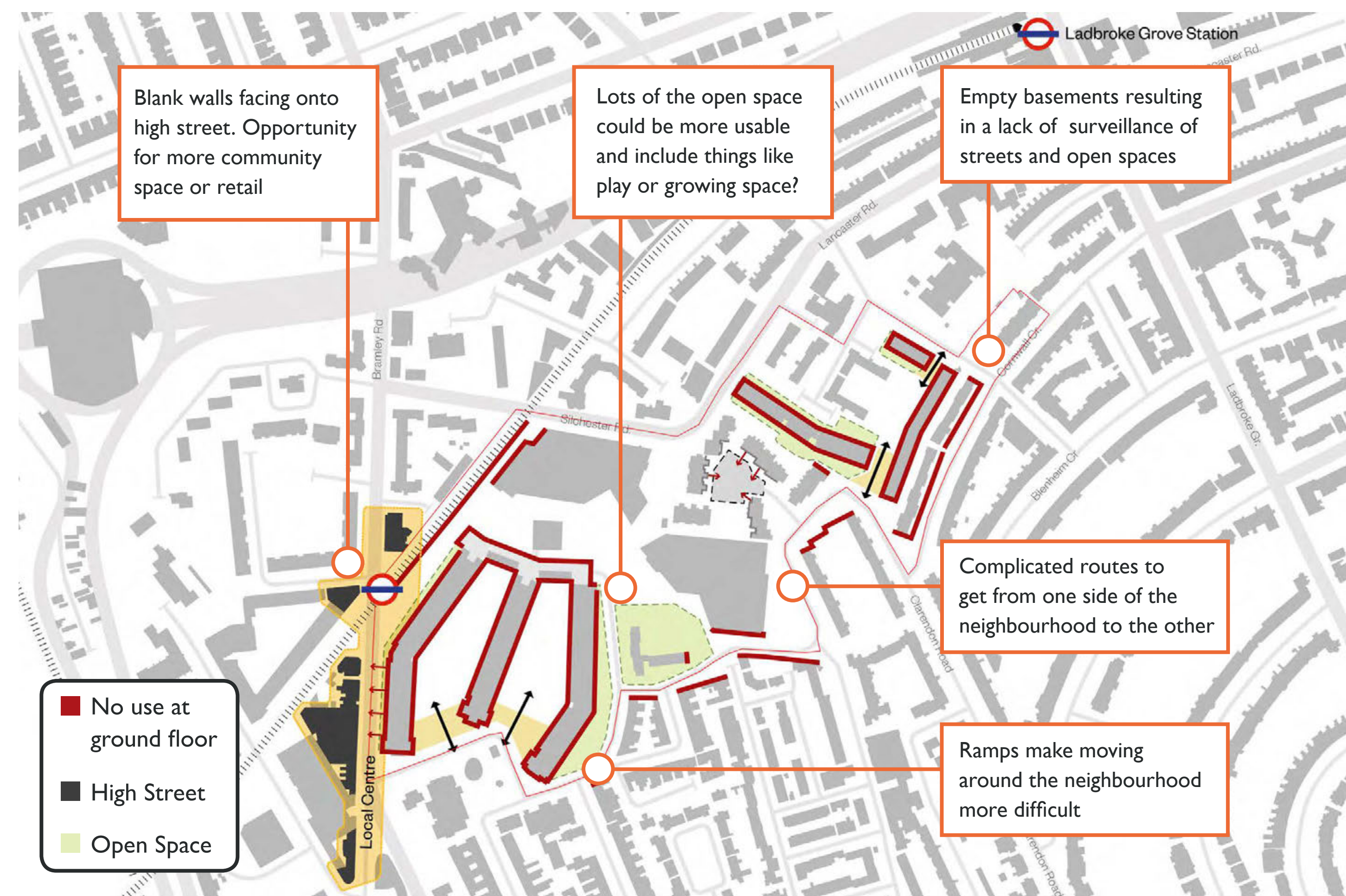


Your wider neighbourhood

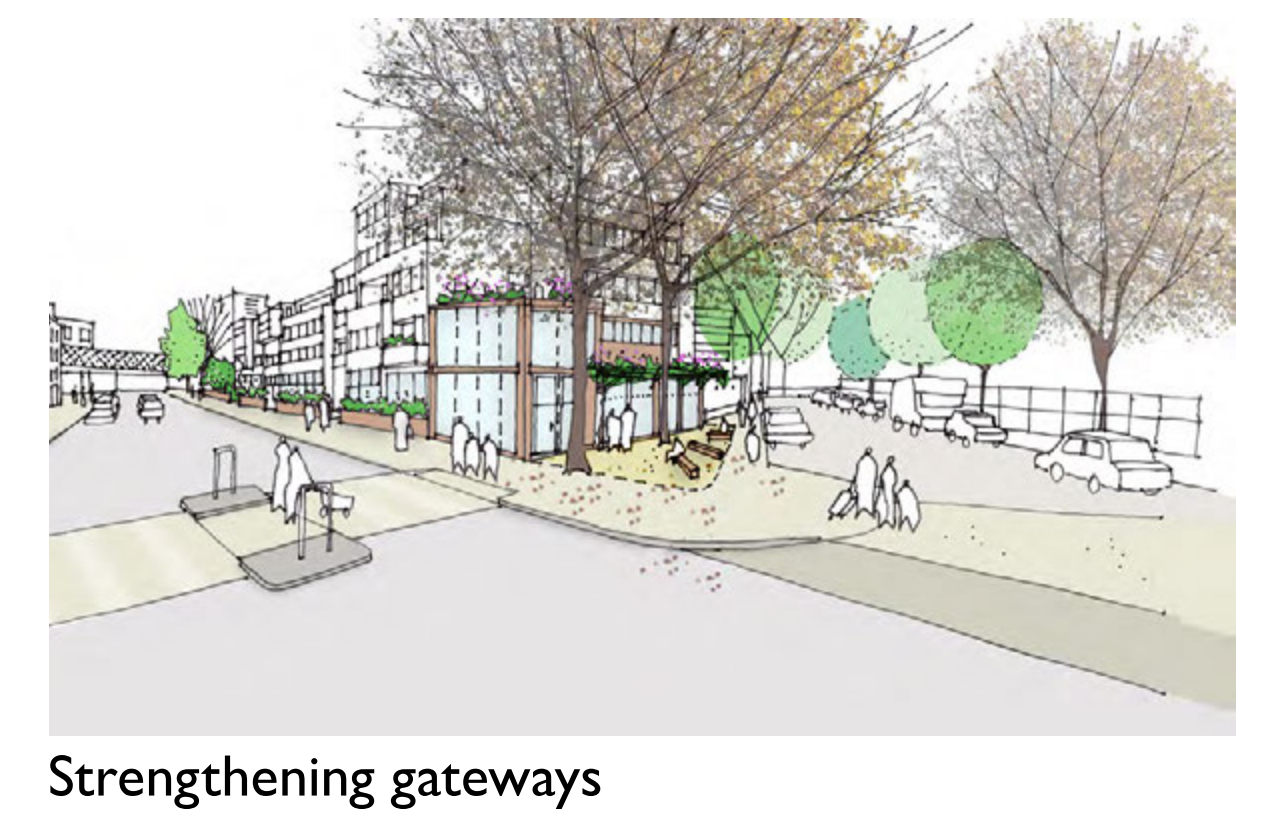
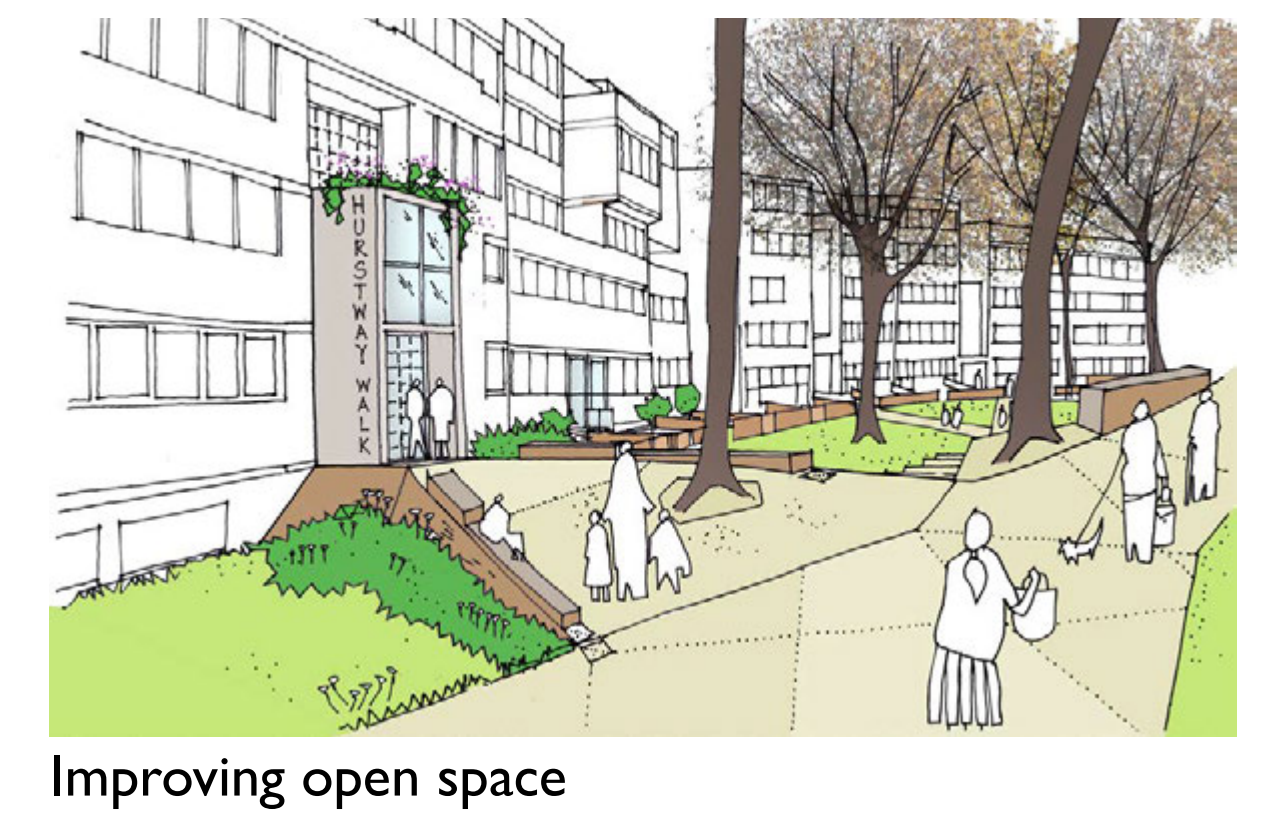
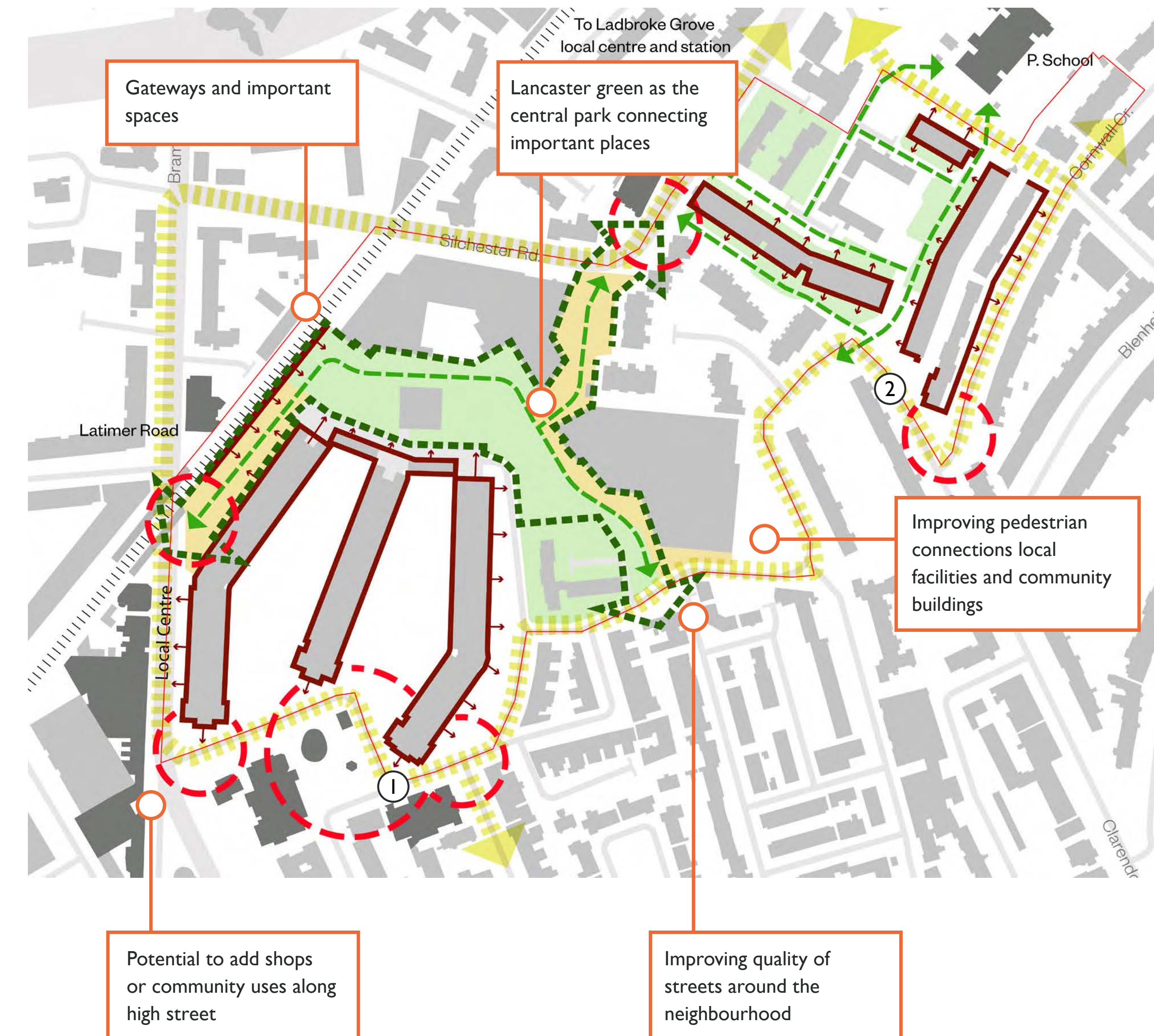
What works?



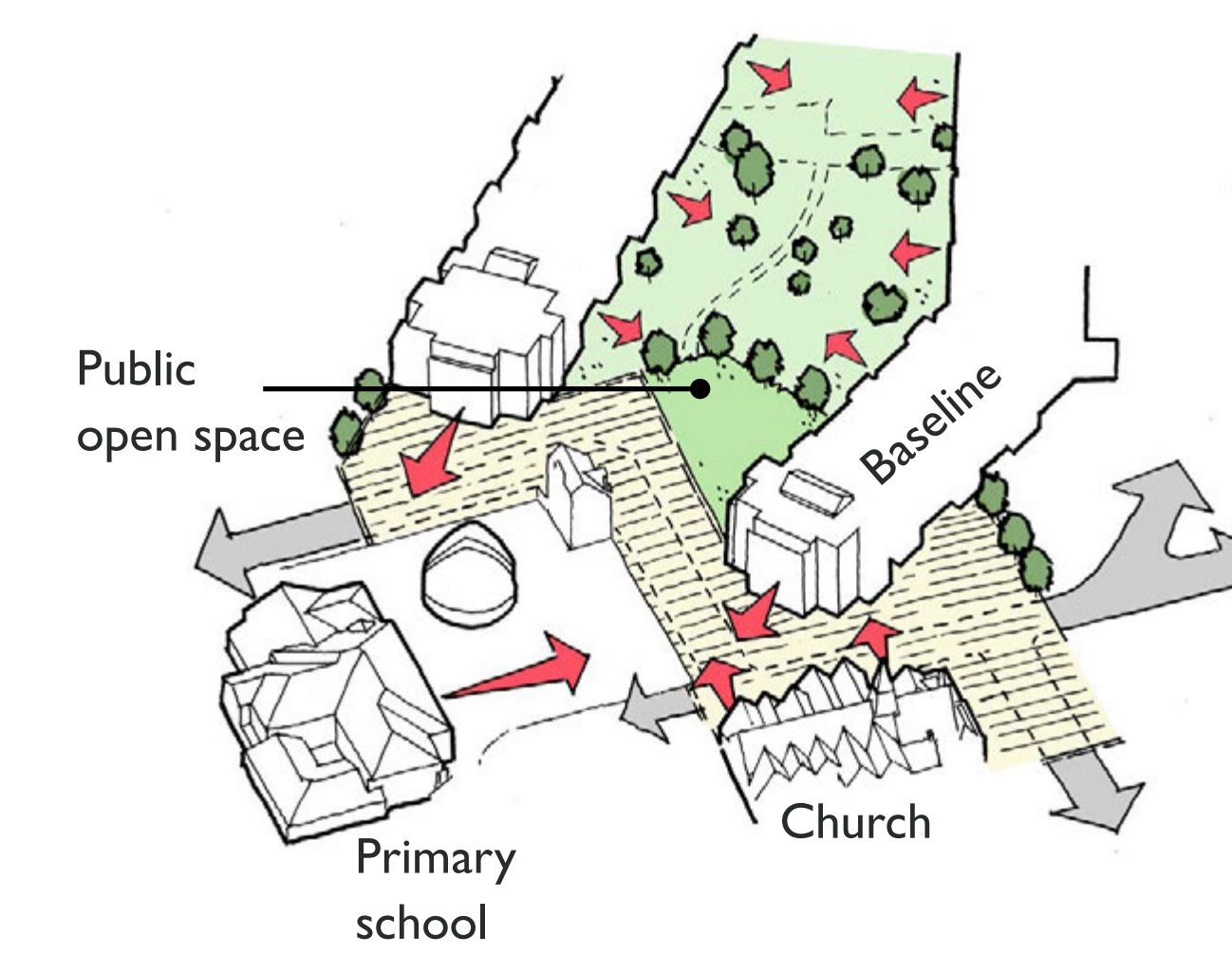
What doesn't work?



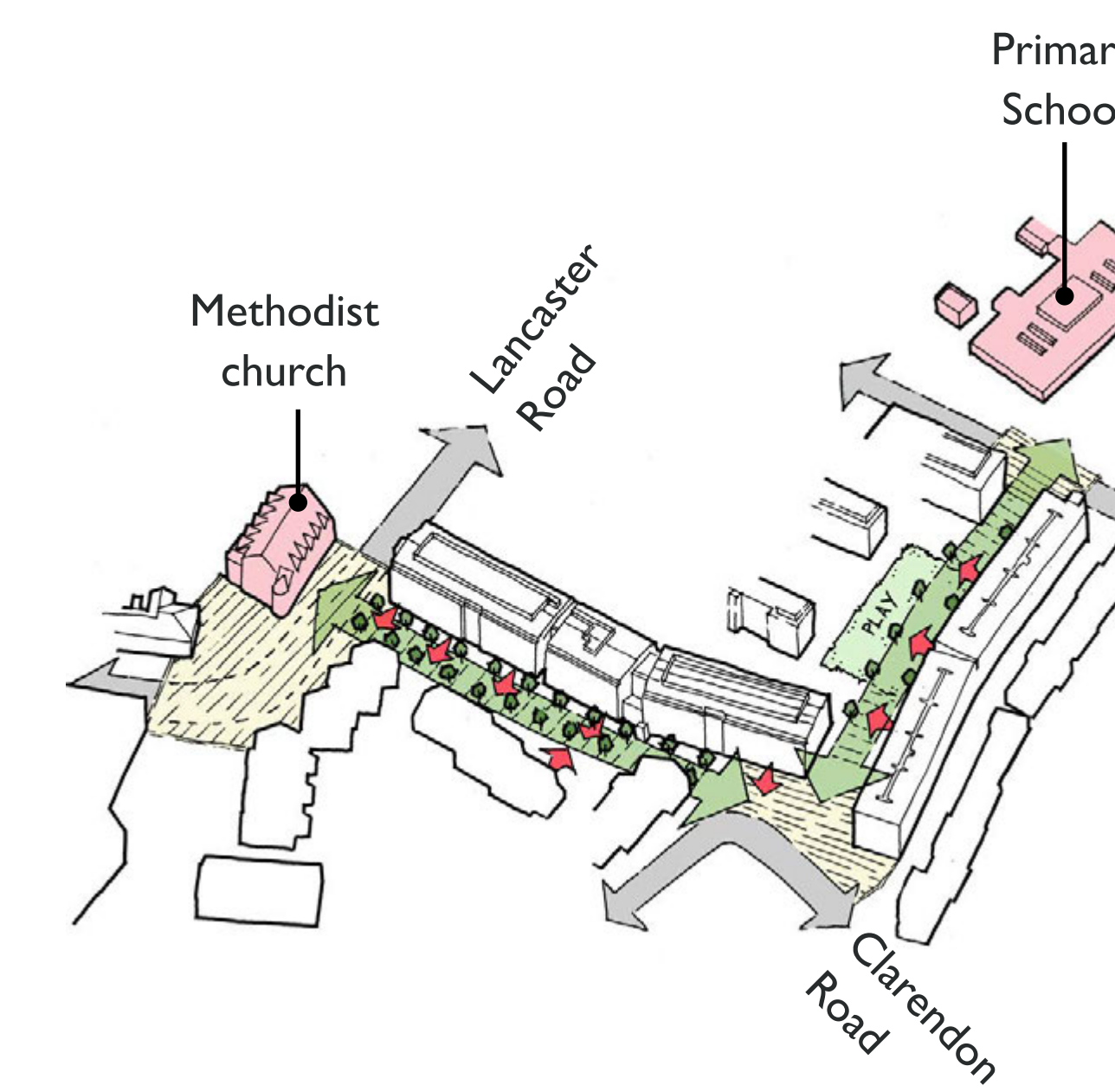
Early ideas - site strategy



Local strategies



Creating a traffic calmed pedestrian friendly space where the school, church, baseline and open space meet



Strengthening connections to the methodist church and primary school

What are your thoughts...

What are your thoughts...



Urban

Streets



Pedestrian friendly streets



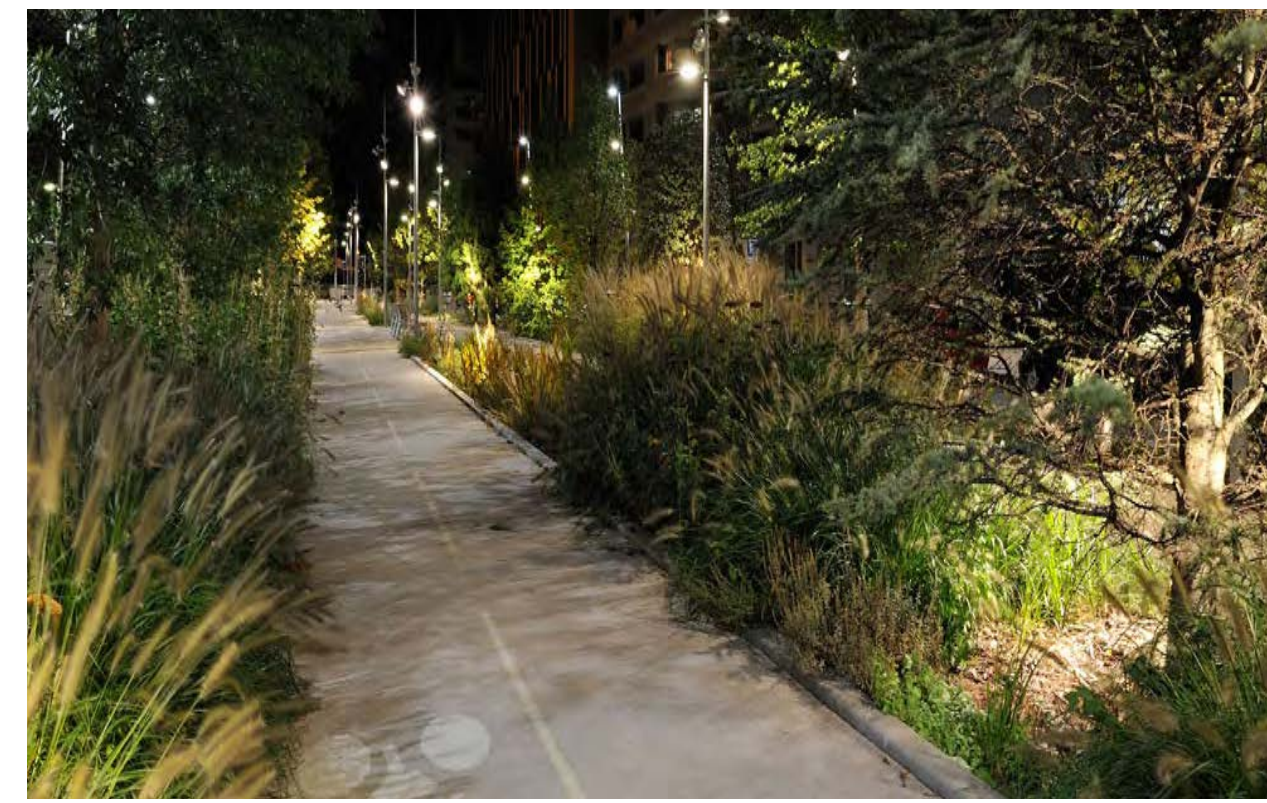
Tree-lined streets



More parking



Public art



Safe cycling routes



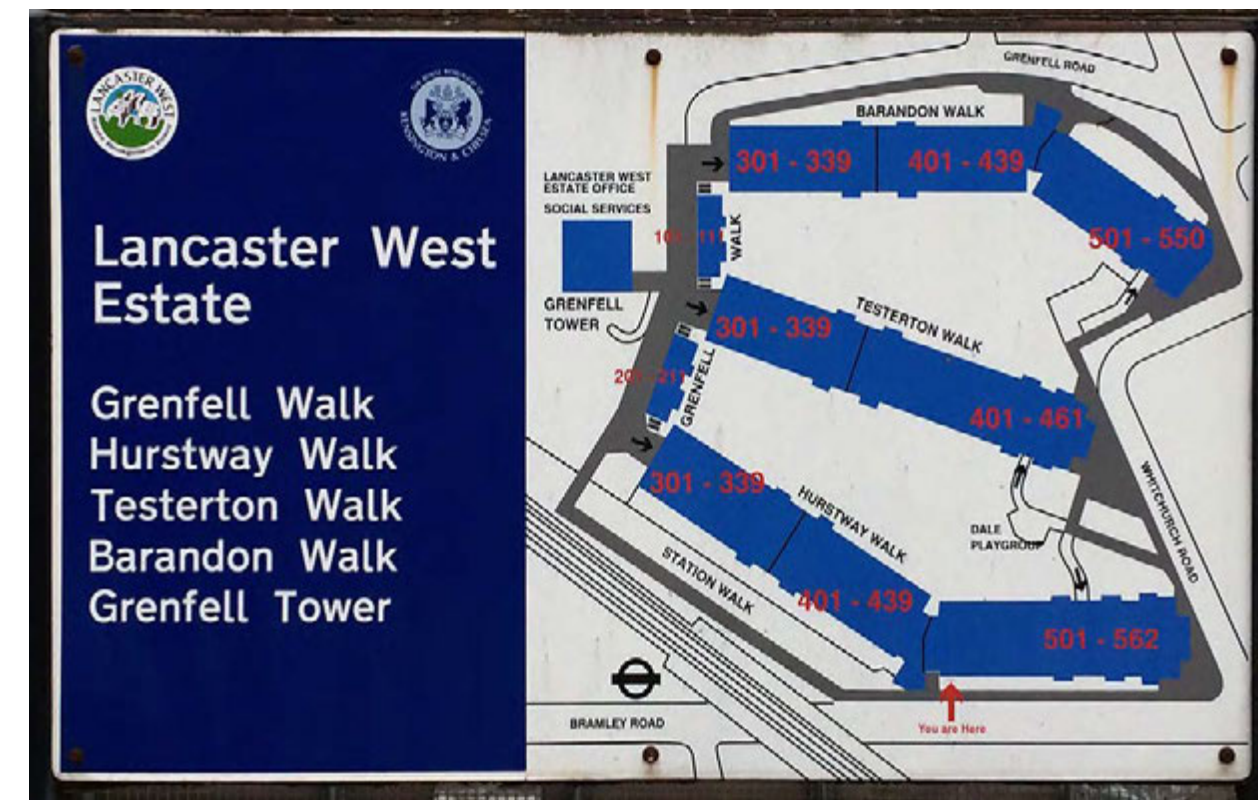
Parks

Wayfinding strategies

The complex layout of the Lancaster West estate as well as a need for clearer signage makes navigation locally difficult. An important part of proposals for the neighbourhood will include a wayfinding strategy involving local artist and Walkways resident Miles Watson who will be involved in future community engagement.



Existing Walkway signs

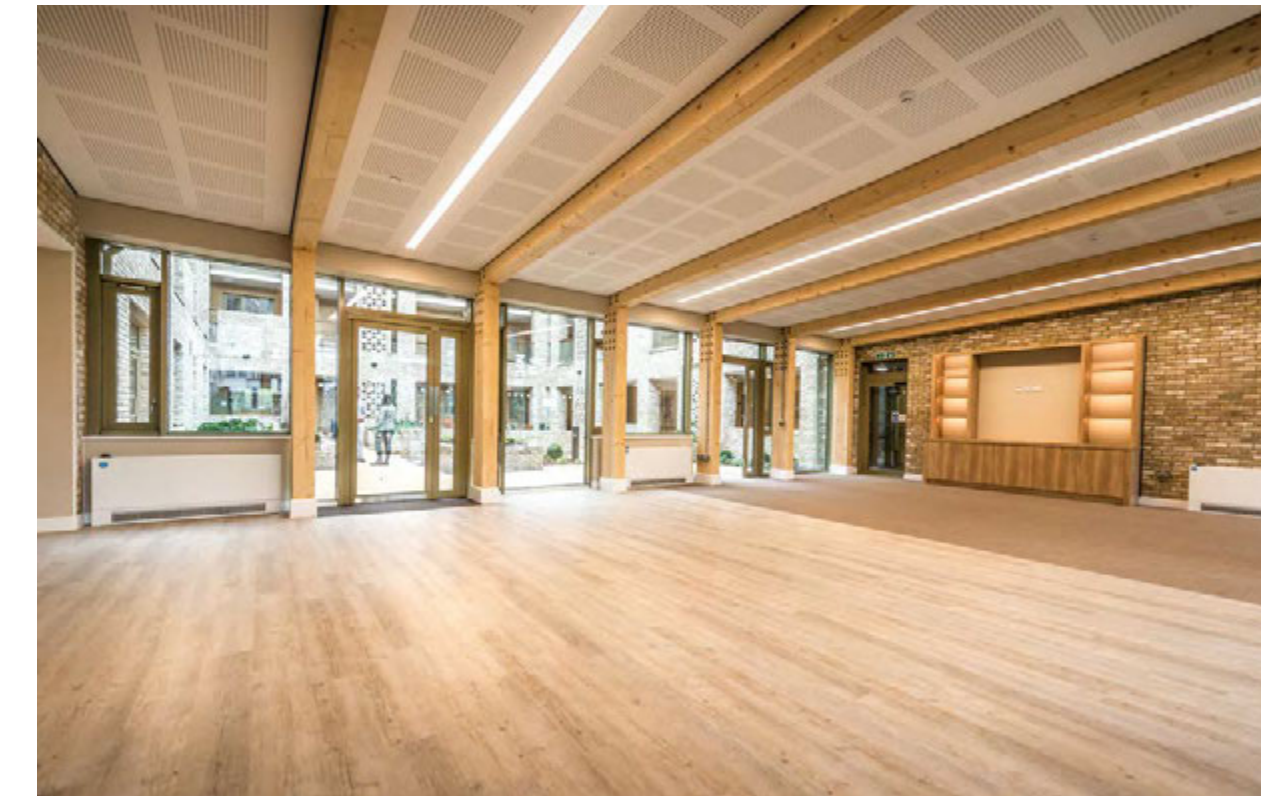


Existing Walkway map



What are your thoughts...

Possible community, non-residential uses



Community spaces



Ground floor retail



Children's day centre



Gallery



Flexible work space



Boxing club

Meanwhile uses



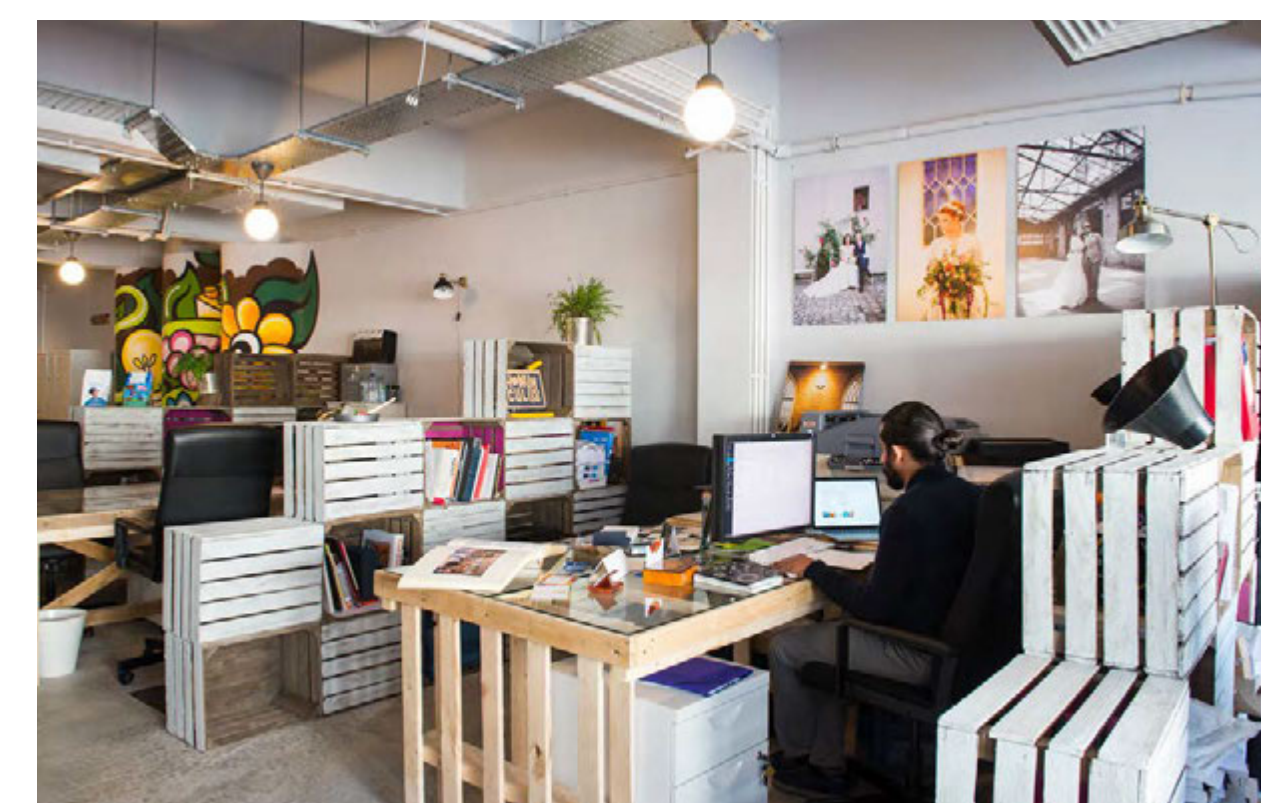
Business incubation



Cultural venue



Art space



Studio space



Commercial space



Use of arches

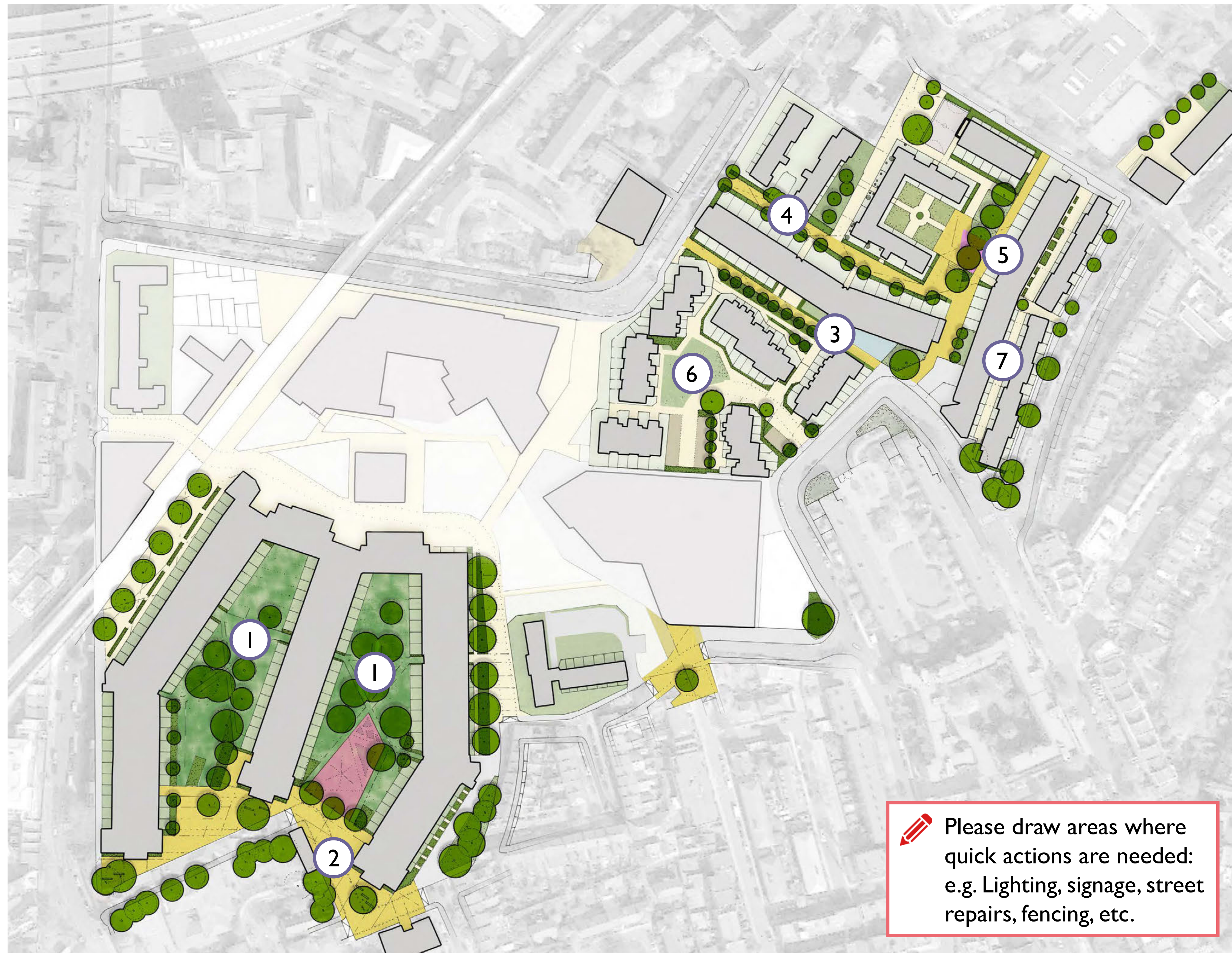


What are your thoughts...



Landscape strategy

Early ideas

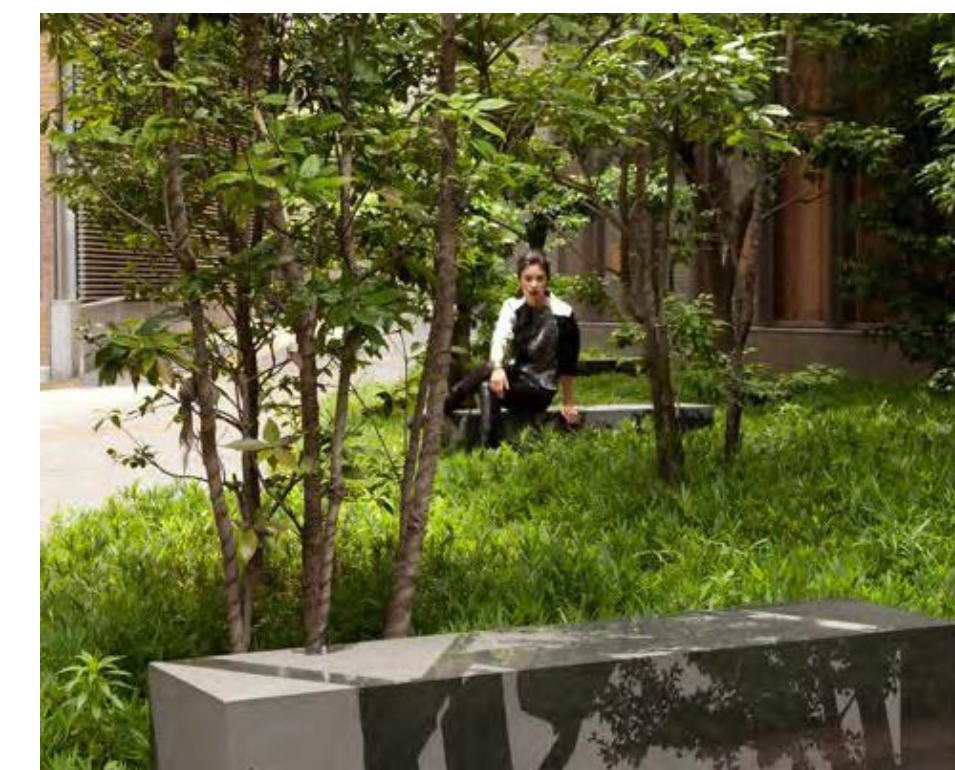


Key landscape strategies:

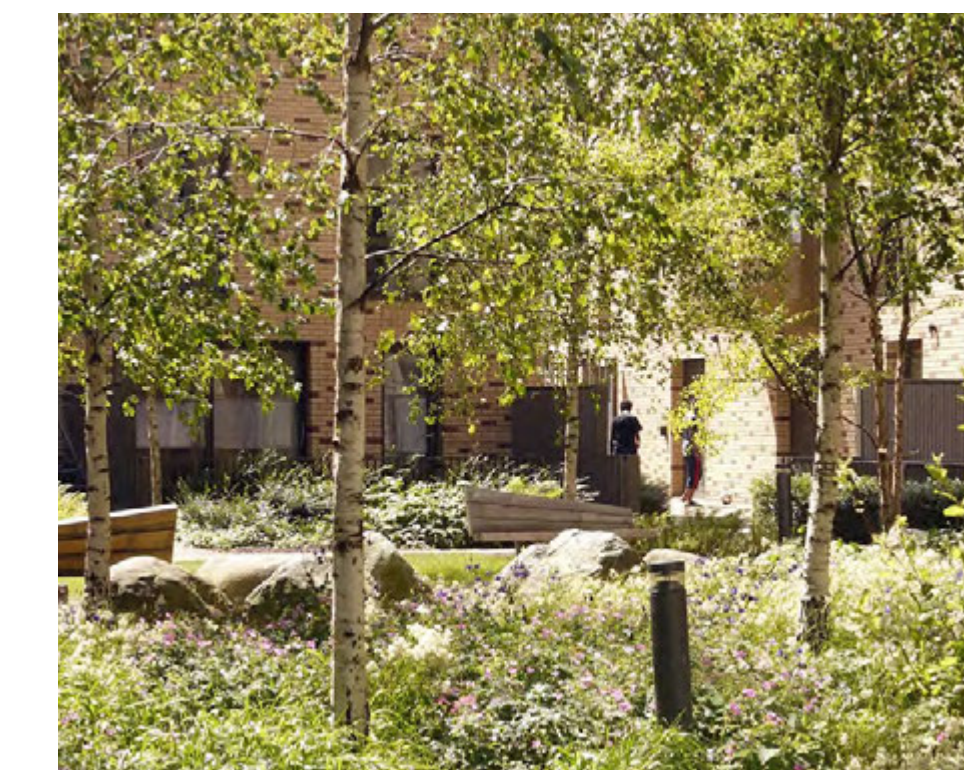
- ① Walkway Courtyards
- ③ Clarendon Walk
- ⑤ Camelford Walk
- ⑦ Camelford Walk
- ② Whitchurch Road
- ④ Lower Clarendon Walk
- ⑥ Verity Close

What are your thoughts...

Open spaces



Landscape character



Tree planting



Play

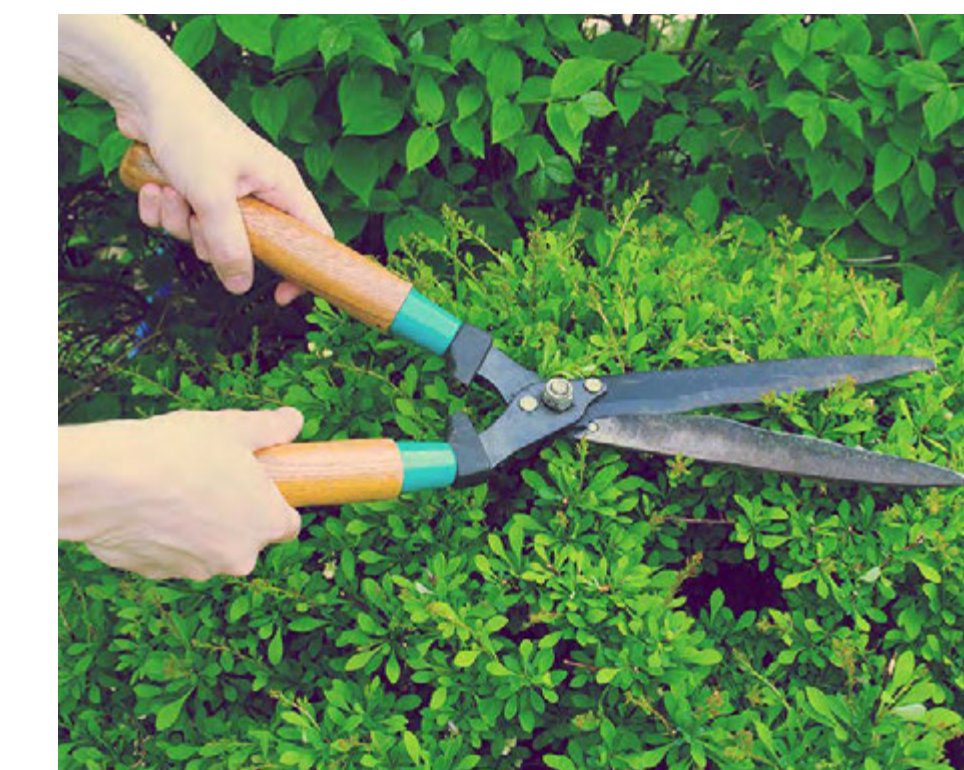


Shared surface

What are your thoughts...



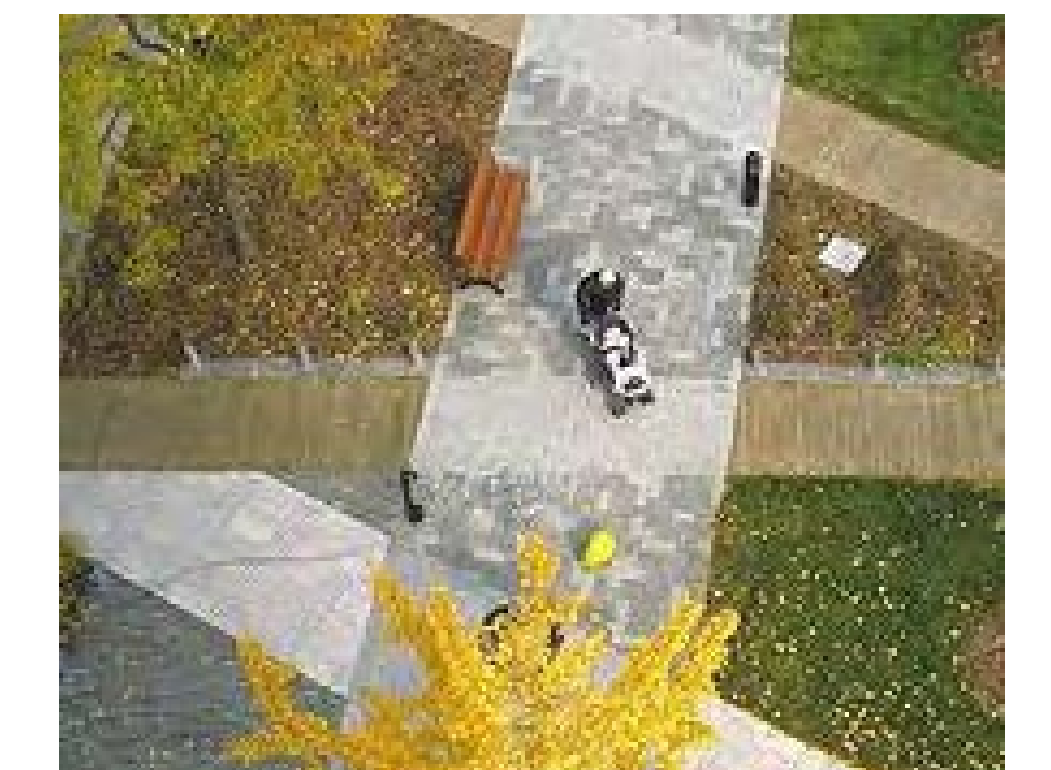
Private garden spaces



Maintenance



Lighting



Pedestrian routes

What are your thoughts...



Security / Boundaries



Storage



Entrances / Wayfinding



Squares

What are your thoughts...



Energy and sustainability

Give us your opinion...

Do you experience lack of ventilation and have to open your windows in winter?

Does your home overheat in summer?

Do you experience condensation on cold walls and ceilings?

How would you like to have individual control of heating in your home?

Should the poor energy performance be improved?

Are water pressures too low for showers?

Do you want lower energy bills by being zero carbon?

Do you think your home is well insulated?
Would you like better insulation?

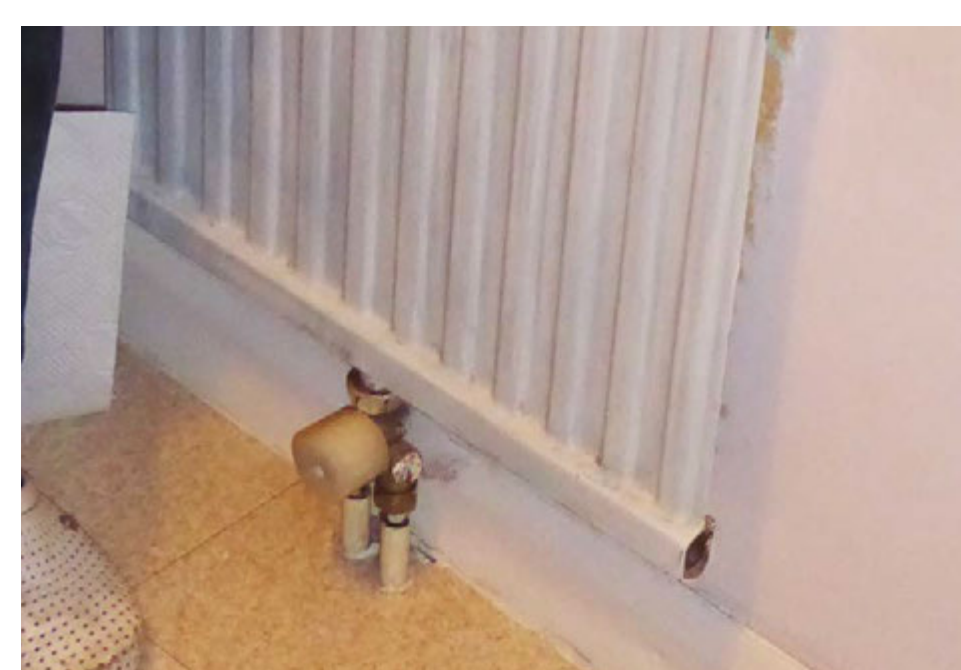
What are the issues?



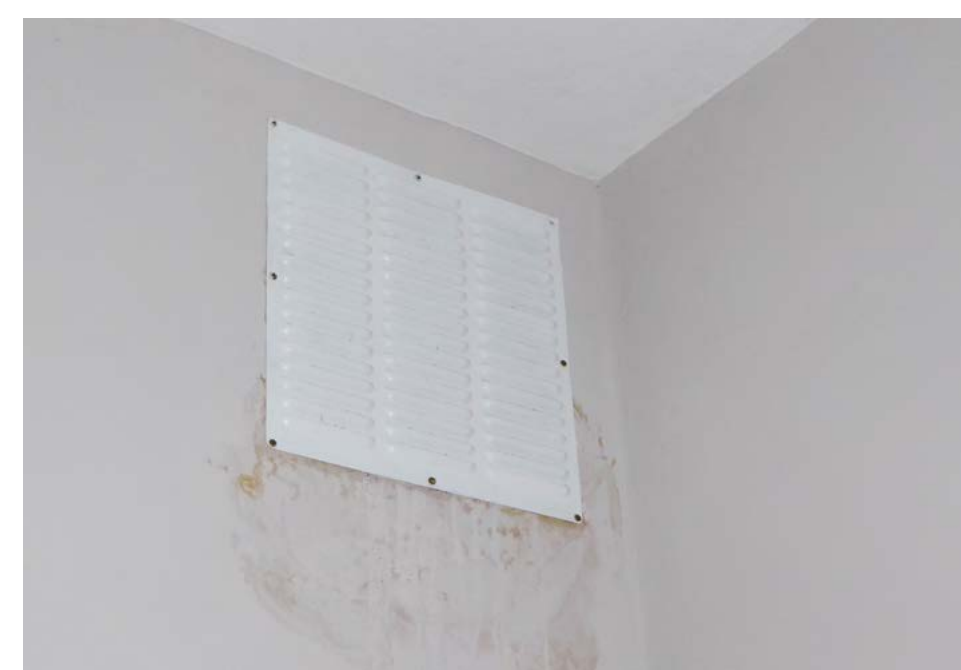
Condensation on windows and walls



Draughts



Lack of local control of centralised heating



Outdated ventilation control and damp



Low water pressure



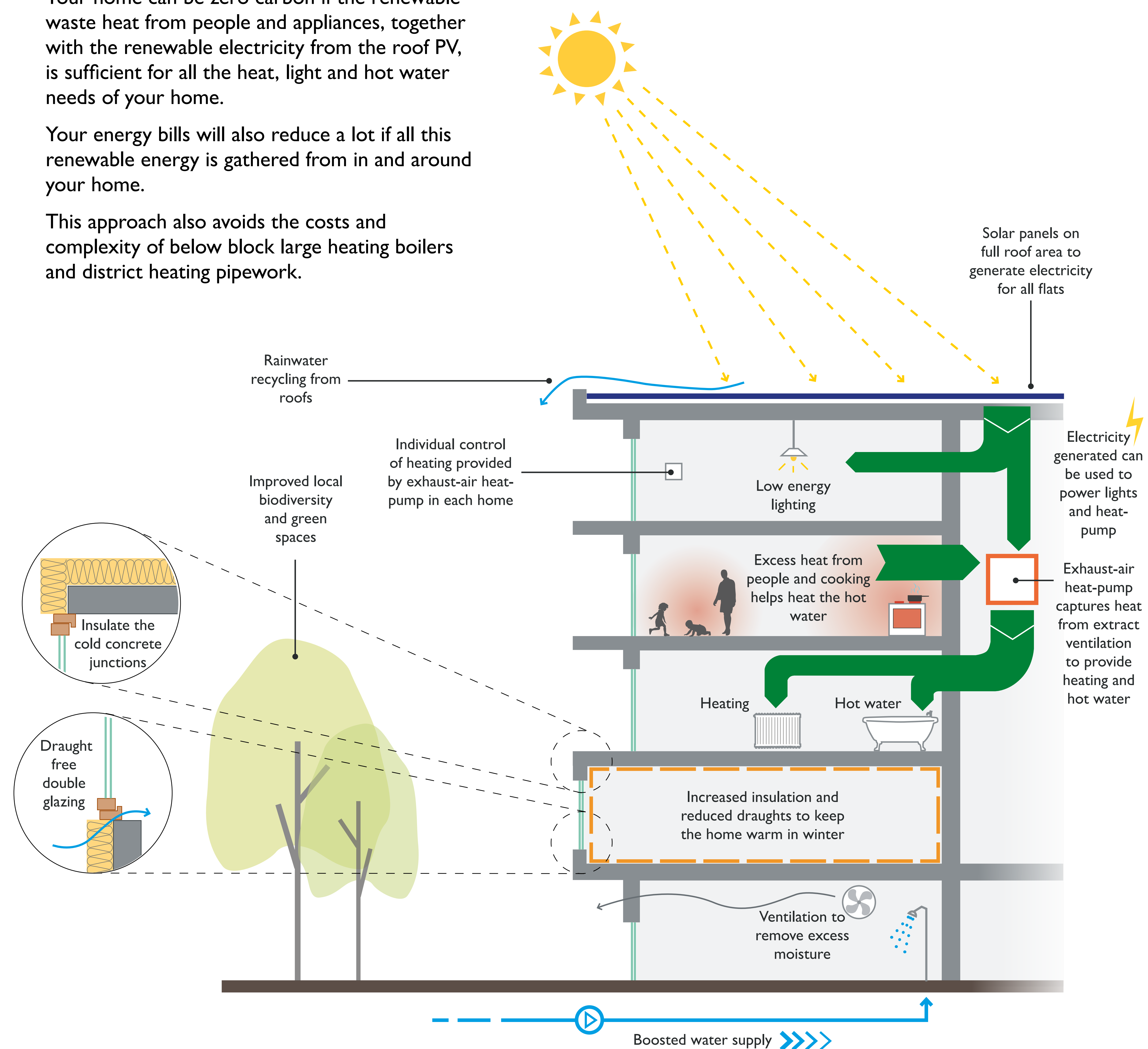
Poor recycling facilities

Early ideas

Your home can be zero carbon if the renewable waste heat from people and appliances, together with the renewable electricity from the roof PV, is sufficient for all the heat, light and hot water needs of your home.

Your energy bills will also reduce a lot if all this renewable energy is gathered from in and around your home.

This approach also avoids the costs and complexity of below block large heating boilers and district heating pipework.



What are your thoughts...

