



Introduction to Waste & Recycling

Gemma Scott

23/03/2021



Contents

Waste Basics



Waste in London & Lancaster West



Waste Myths



How you can make a difference



The background of the slide is a close-up, high-angle shot of numerous blue-painted metal pipes. The pipes are arranged in a dense, overlapping pattern, with their circular openings facing the viewer. The lighting creates a strong contrast between the bright blue exterior and the dark interior of the pipes, highlighting the texture of the paint and the metallic surfaces.

Waste Basics

What is waste?

**A resource someone
else can get value
from**

Waste hierarchy

REDUCE

REUSE

RECYCLE

RECOVER

DISPOSE



The circular economy



Reduce, reuse & recycle - why do it?

**London gets
through
7.7 billion
plastic bottles
every year**

Source: The Guardian

**Aluminum &
glass can be
recycled
infinitely**

Source: Recycle Now

**Recycling 1
drinks can
save enough
energy to
power a TV for
4 hours**

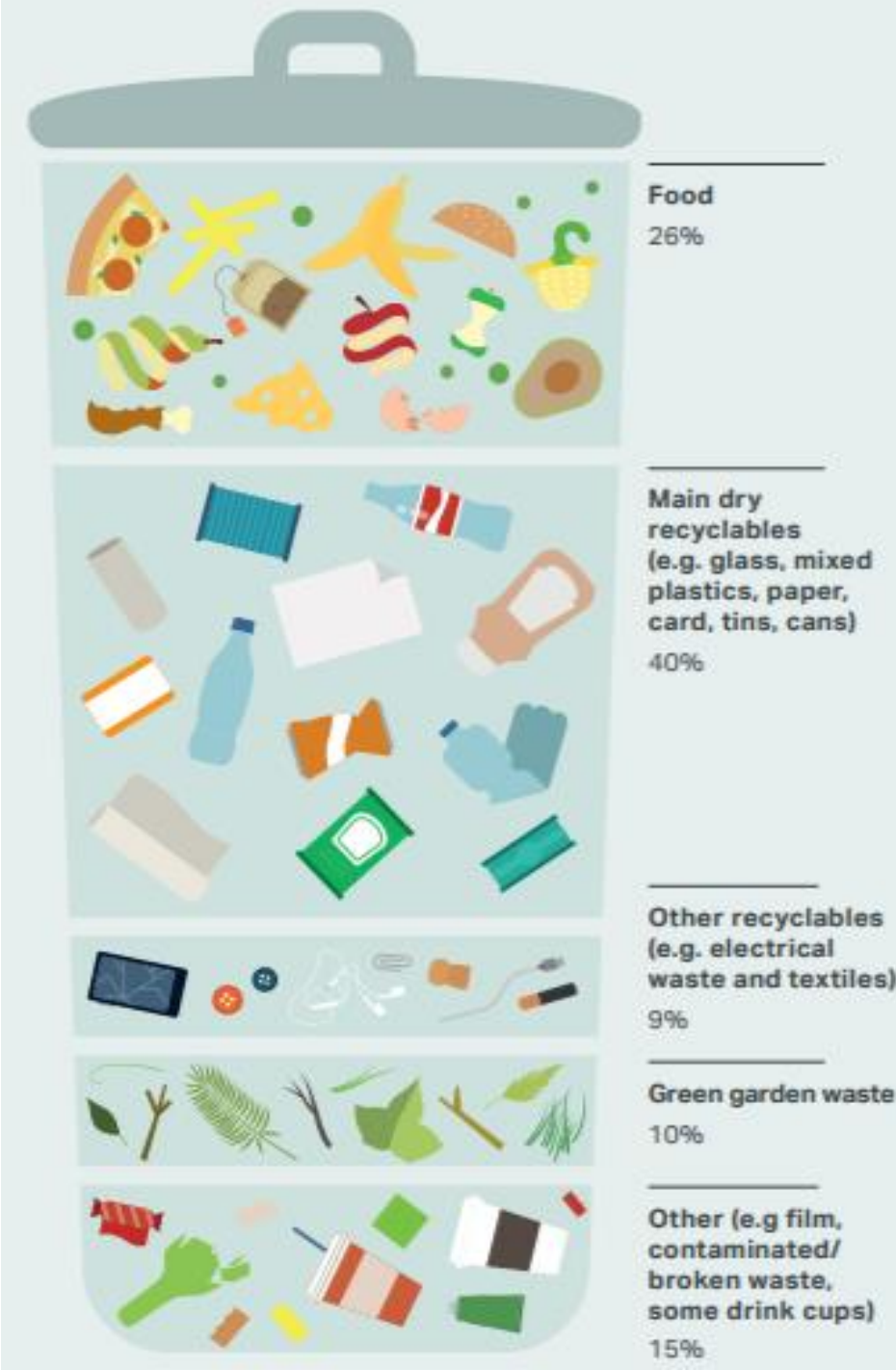
Source: Recycle Now



Waste in London, K&C and Lancaster West

How much & what is in our waste?

- **London-wide:** Every year, London boroughs collect the equivalent of 1,500 x 50-metre swimming pools full of waste.
- **K&C / Lancaster West:** The average household produces 1 tonne of waste every year. The equivalent to the weight of a small family car.
- Food waste makes up a significant amount of the waste
 - 60% of this is avoidable



Legislative Drivers



National Consultations

1. Consistency in household and business recycling



2. Introduction of a deposit return scheme (DRS)



3. Reform of Packaging Regulations (EPR)



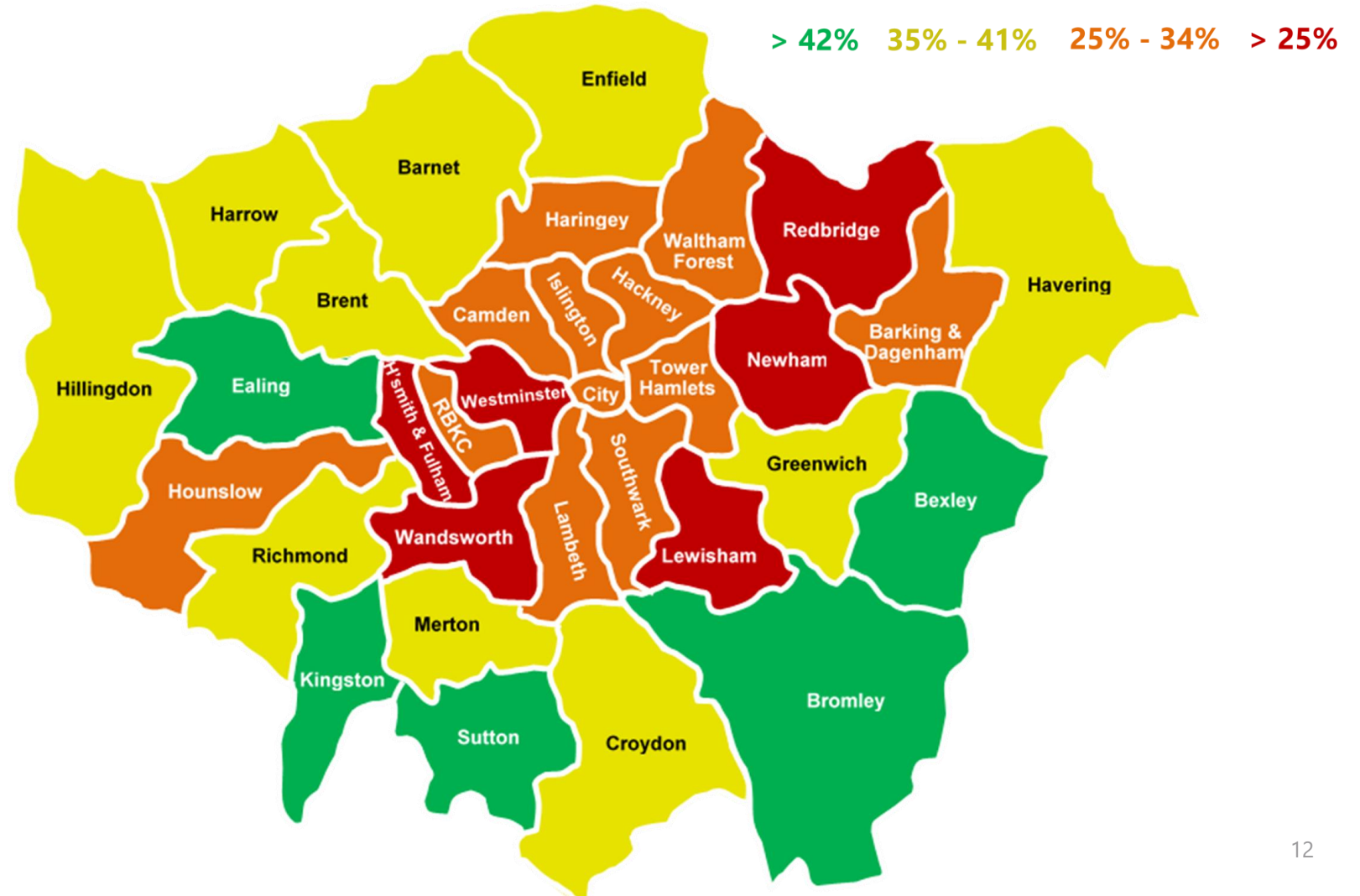
4. Plastic packaging tax



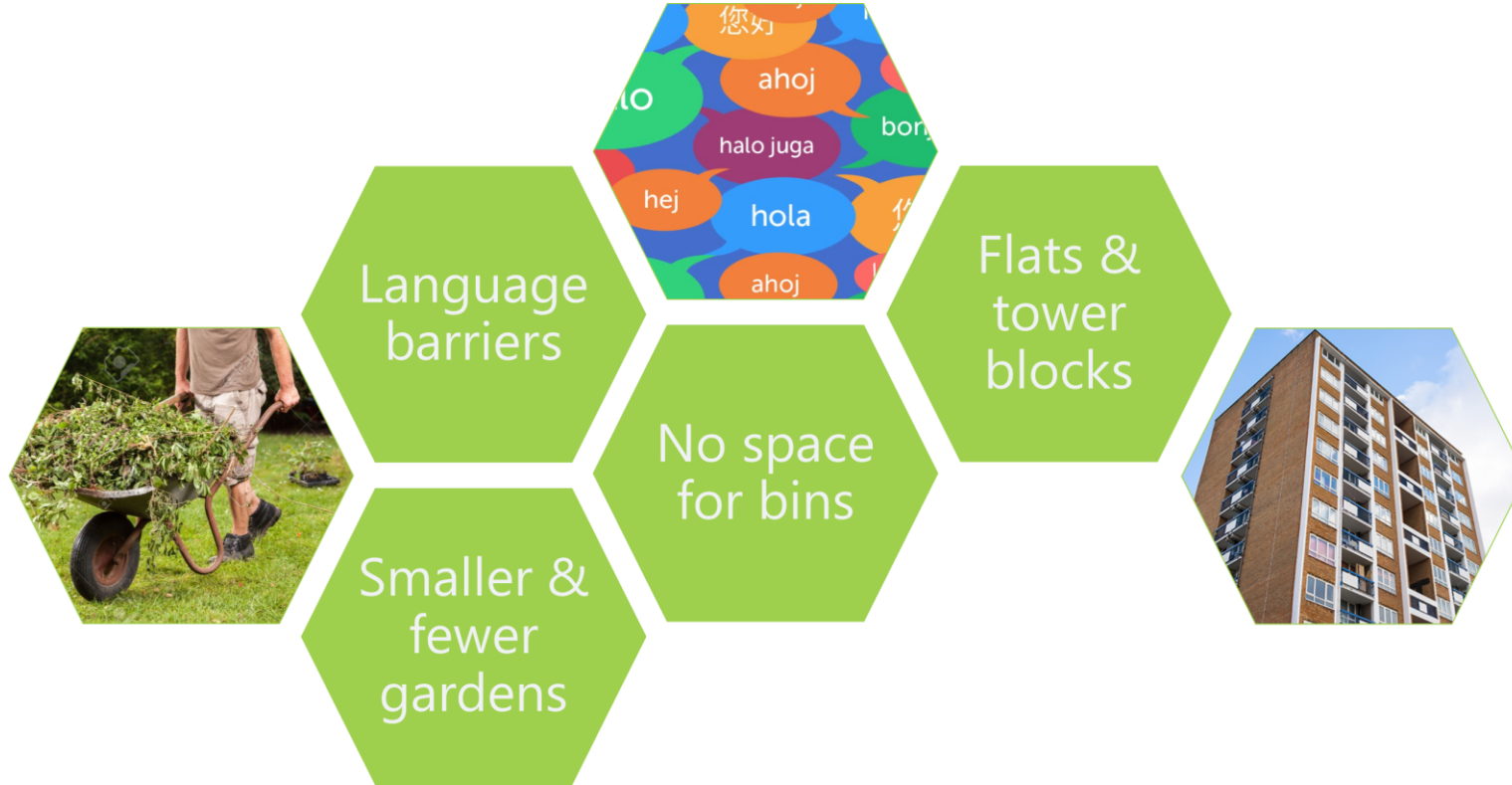
Household Recycling rates

2019/20

- England = 43.8%
- London = 33.5%
- RBK&C = 28.6%
- Neighbours
 - RBH&F: 25.5%
 - WCC: 20.4%
 - Wandsworth: 23.7%



Challenges in London



Waste Collection - Overview

Residential



Household Waste: All Local Authorities are legally obliged to provide a waste collection service to all households within their borough. This is paid for through household council tax.

Lancaster West recycling & food waste



What items can be recycled?



What can't be recycled / common contamination?



What happens to your waste - once collected...



Energy from Waste
Facility



Materials Recycling
Facility



End Markets

<https://youtu.be/fgfTQfKRVPY>

What happened to your waste - end markets...



Recycling process



ReLondon



Waste myths

MYTH...

all plastic is bad



FACT...
some plastic is necessary



MYTH...

compostable and biodegradable is better than plastic



FACT...
it will only breakdown under industrial conditions



MYTH...

all good quality paper can be recycled



FACT...
only if it scrunches and doesn't have glitter



MYTH...

any packaging with a cyclical arrow on it can be recycled



FACT...

packaging has confusing labelling for recycling



MYTH...
waste is sorted at a MRF so I don't need to bother



FACT...
unsorted waste wont be recycled





How YOU can make a difference

Personal Reduction Tips

There are lots of ways that you can reduce the amount of waste you produce...



A collage of various items including vegetables, a water bottle, a logo, tools, a gift, a washing machine, food containers, and a tattoo.

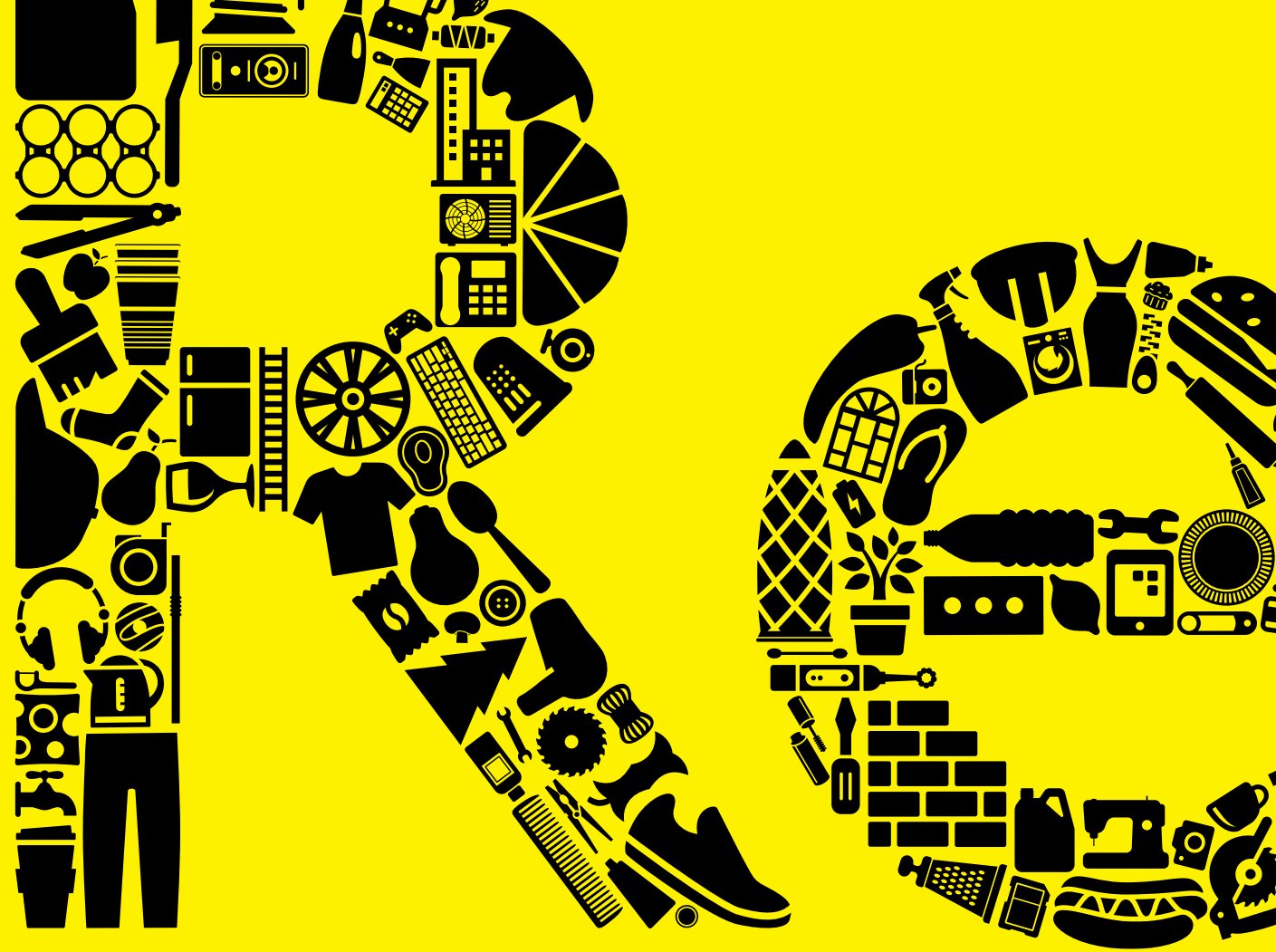
**If you do have to throw it
away, then put it in the right
bin!**

Lancaster West Redevelopment tips

- Improve dry recycling service for residents
- Roll out food waste service across the development
- Install multi-bin kitchen units
- Careful management of C&D waste



Any Questions?





Thank you

Gemma Scott

Senior Advisor

 @relondon_UK

 /company/relondon

relondon.gov.uk