

# Your future heating and hot water solution

## All Estate Meeting

March 2021

**LANCASTER WEST  
NEIGHBOURHOOD TEAM**

**WT11**

Engagement Manager

# Introductions



Shaun Haden,  
Head of Strategic  
Programmes &  
Innovation



Jeff Laidler,  
Heat Network  
Programme Manager



Nigel Griffiths,  
Engineer



Janet Hall  
Heat Network  
Resident  
Engagement

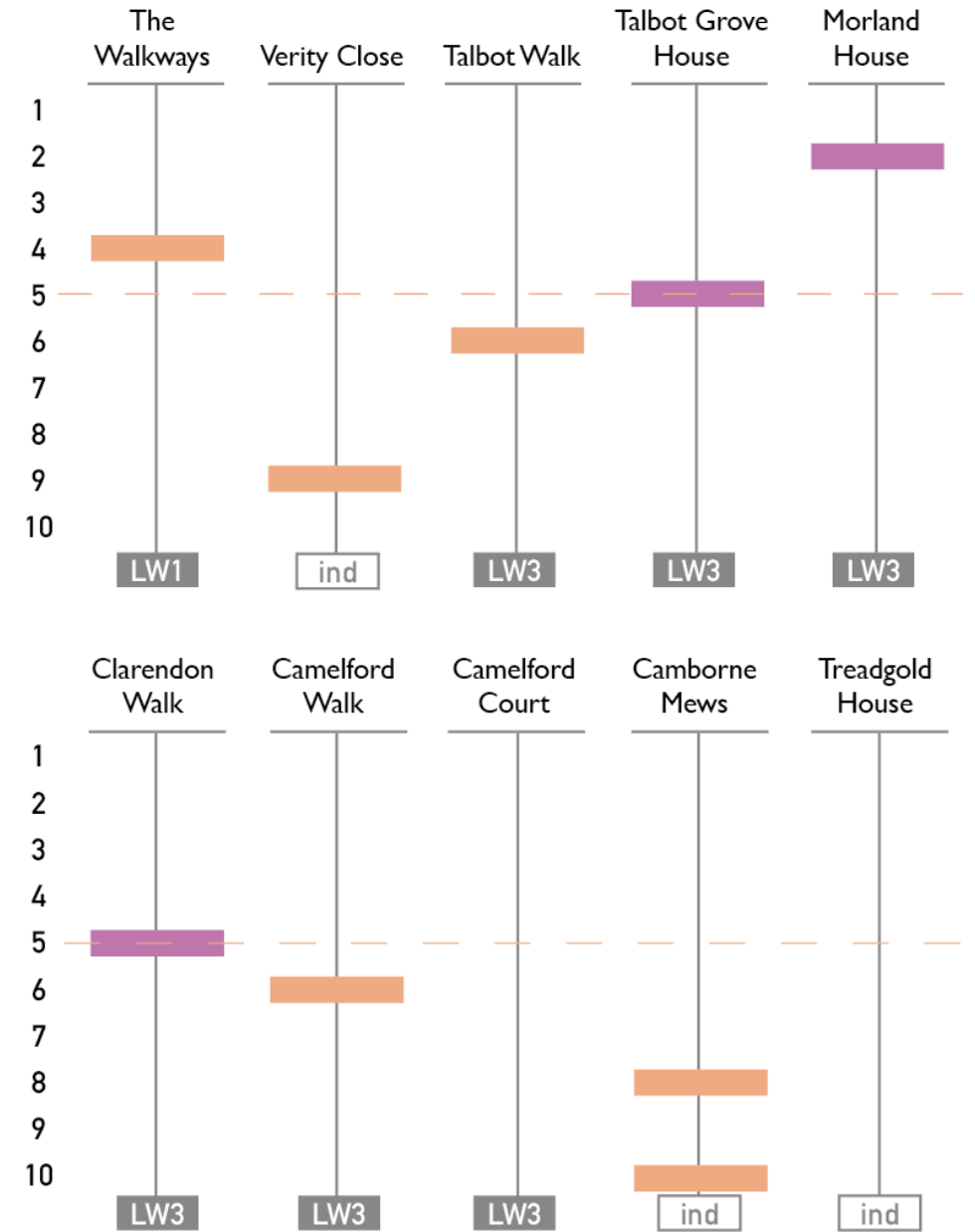
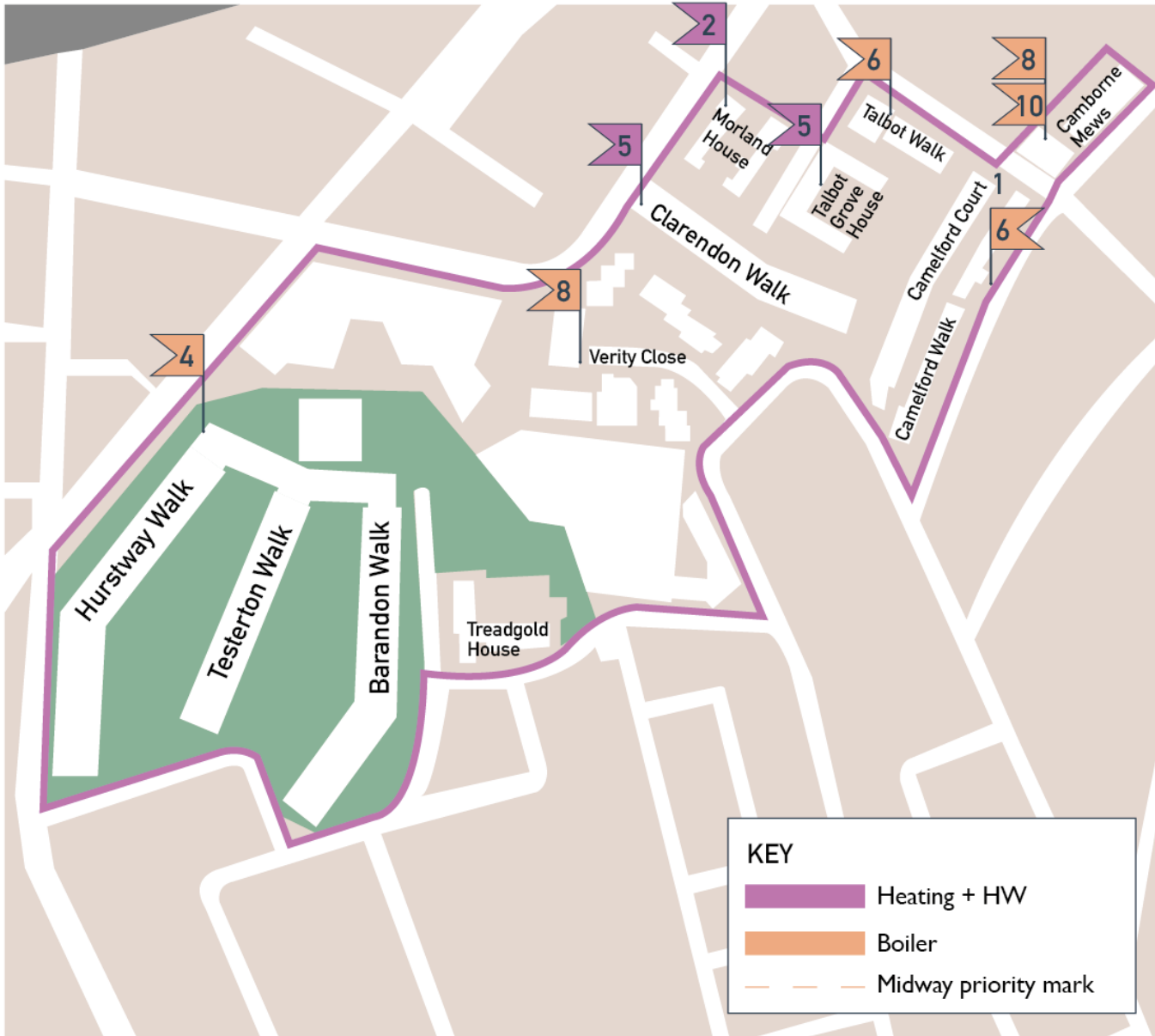
# Agenda

1. Heating LancWest Today
2. Future options
3. Resident co-design
4. Q&A

**LANCASTER WEST  
NEIGHBOURHOOD TEAM**

**W11**

# Heating LancWest Today



Based on the top 10 priorities

# Top Ten Priorities + Heating

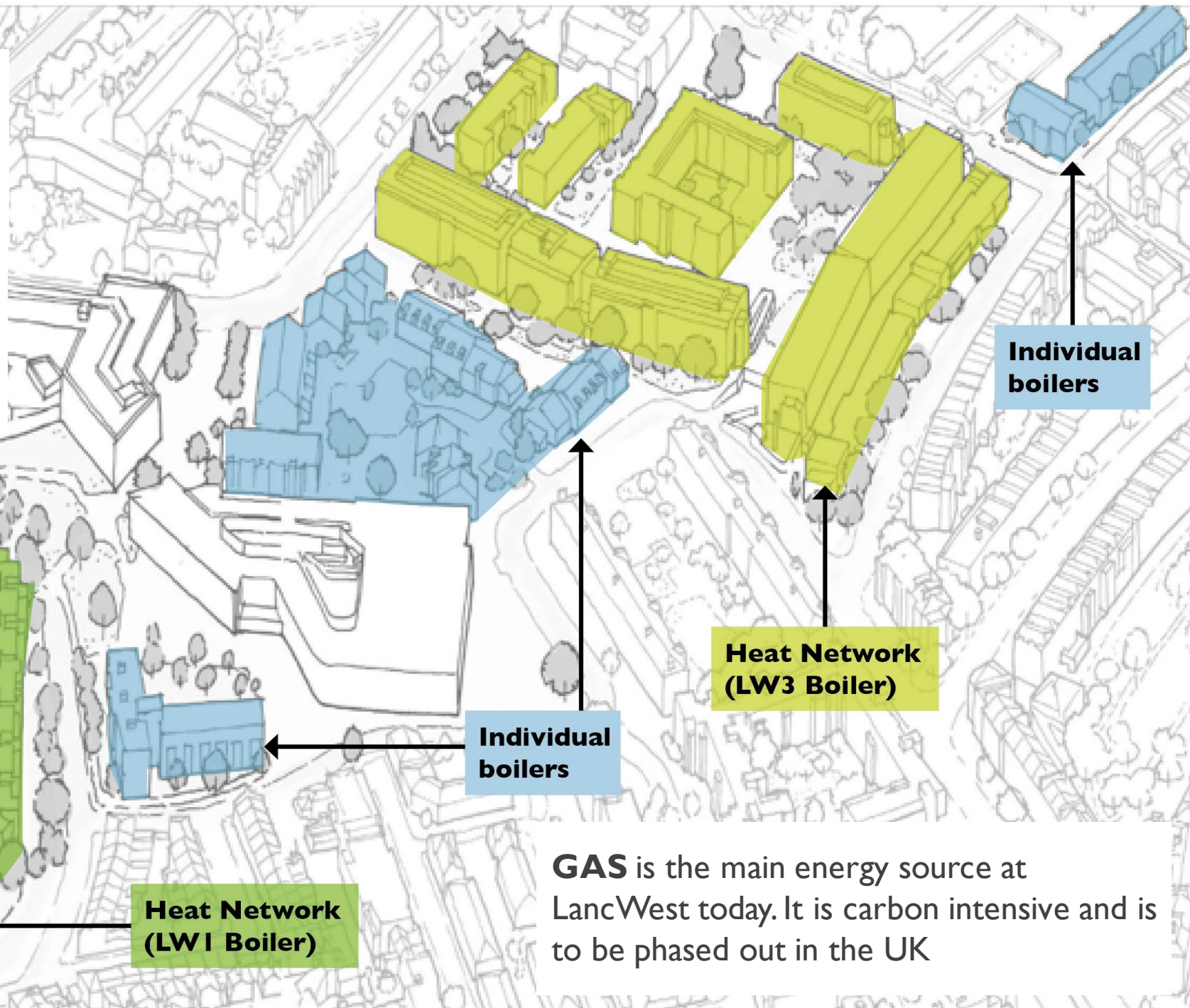
**LANCASTER WEST  
NEIGHBOURHOOD TEAM**

**W11**

# Heating and Hot Water Survey Results

# How is LancWest heated today?

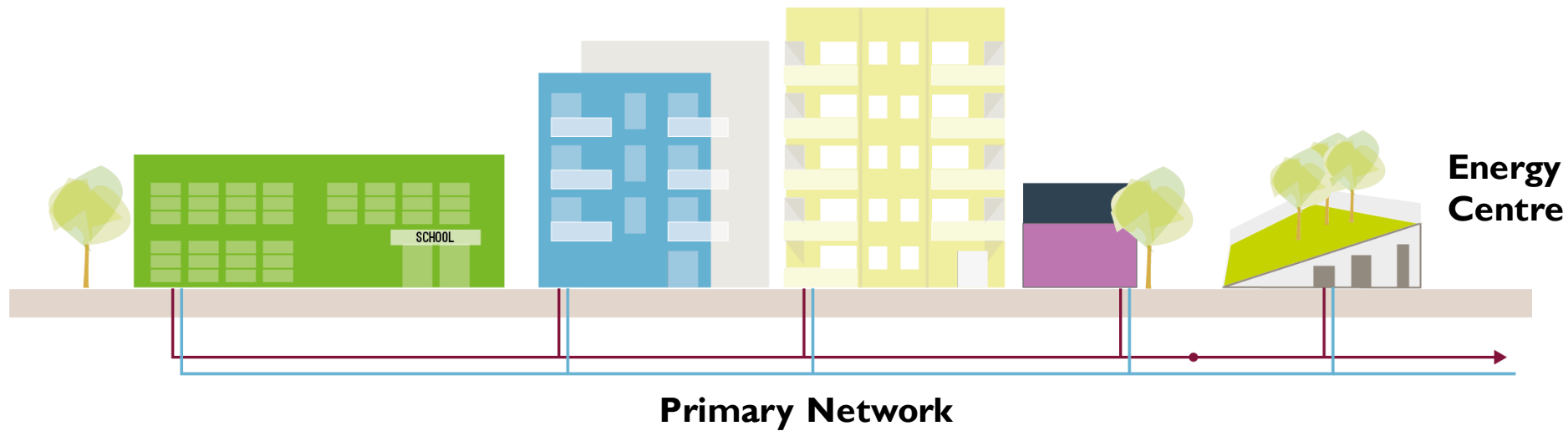
- ▶ **80%** of homes are heated by gas via an existing **heat network**
- ▶ **20%** of homes have an individual gas boiler



**GAS** is the main energy source at LancWest today. It is carbon intensive and is to be phased out in the UK

# What is a heat network?

It is a system that supplies heat to several buildings via pipes connected to a local energy source



Renewal and replacement is required of the two heat networks, which today supply 80% of Lancaster West Estate's heating.

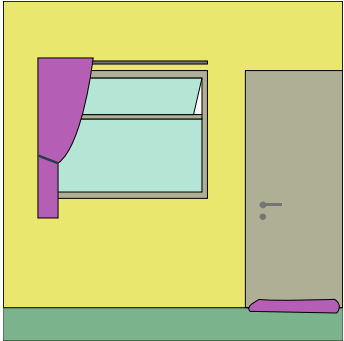
For the 20% of homes with individual gas boilers there is also the opportunity to benefit from connecting to the new heat network.



# The Need for Change...

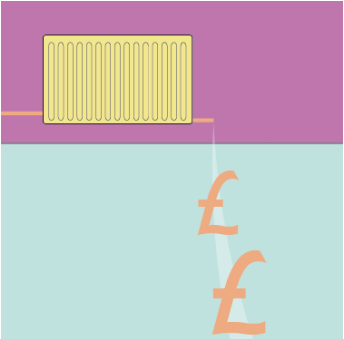
The estate refurbishment presents an opportunity to:

## 1 - Improve Your Home



- ▶ Deliver heating that works and is reliable
- ▶ Co-deliver with refurbishment, to minimise disruption
- ▶ Change to renewable heating, future-proof the estate and tackle climate change
- ▶ Give control to residents – for heating in each home and room

## 2 - Reduce Energy Use + Bills



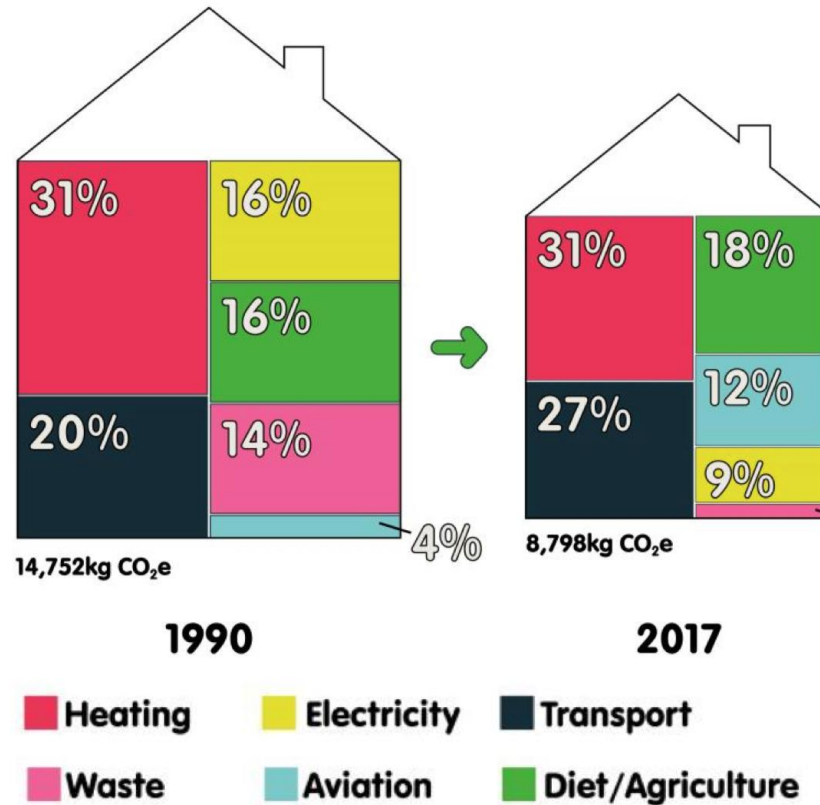
- ▶ Reduce overall energy use and energy bills
- ▶ Residents to pay for energy used, not fixed rate

## 3 - Achieve Net-Zero Carbon

**Which is most important  
to you?  
Vote Now!**

# Carbon Emissions and Heating

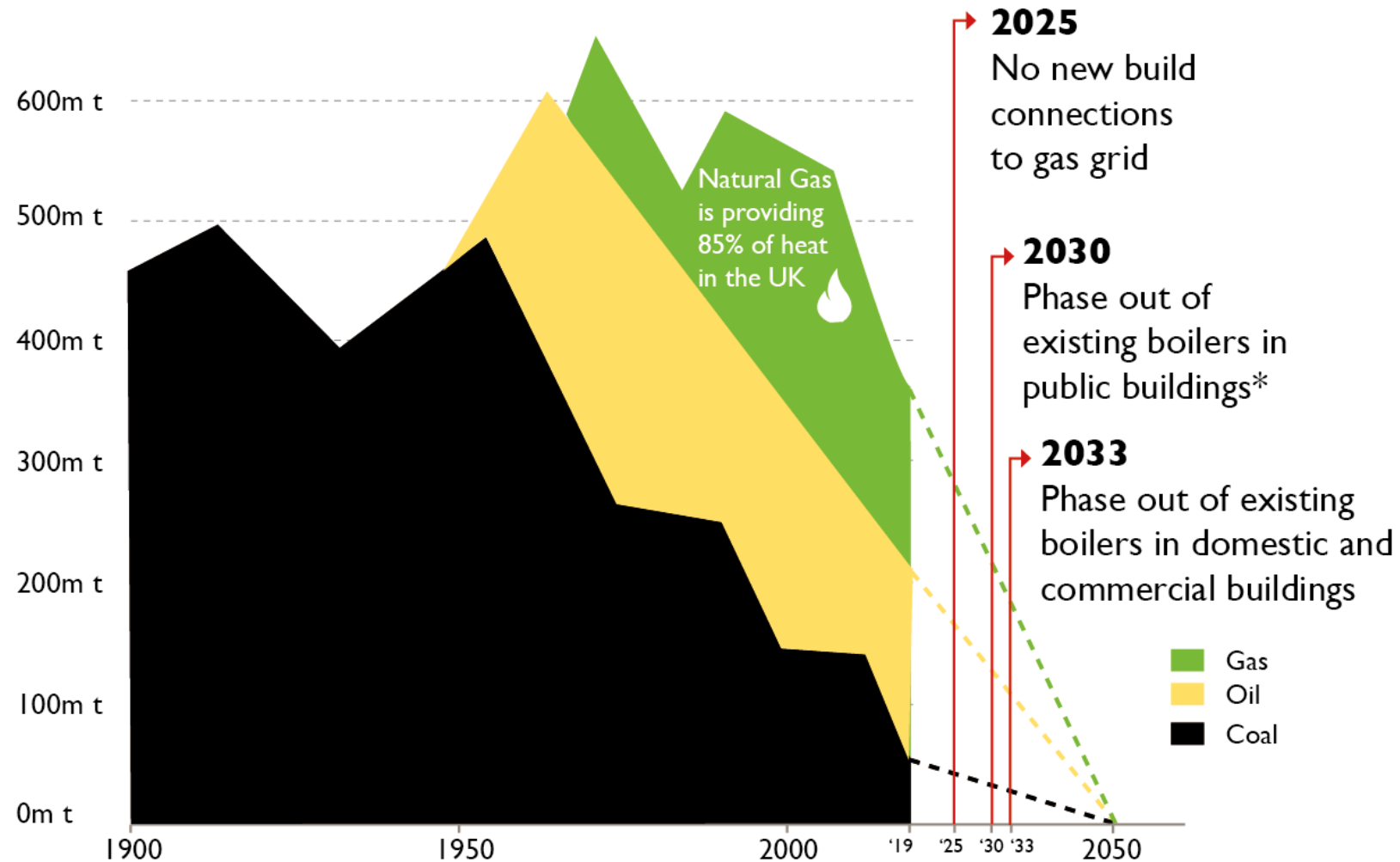
- ▶ 31% of domestic CO<sub>2</sub> emissions are produced by heating
- ▶ On Lancaster West this is likely higher, due to leaky buildings
- ▶ Heat is the most difficult sector to reduce pollution, things haven't changed much in 20 years.



Source: Energy Systems, Low Carbon Home 2017

# Why we need to change...

1. To improve your heating
2. To achieve our Net-Zero goal
3. Change is happening, UK Gov has already banned new domestic gas connections



ata Source: Global Carbon Budget 2020, UK profile

hase out does not apply to areas designated for heat network or hydrogen zones

# **Future Heating Options**

## **Introduction**

# What options are being considered?

## Individual Flat / House Options

---

Individual air  
source heat pumps

---

Electric storage  
heaters

---

## Building Options

---

Replace network  
with communal air  
source heat pump in  
each building

---

## Estate-wide Options

---

Replace existing  
network

---

Combine existing  
networks

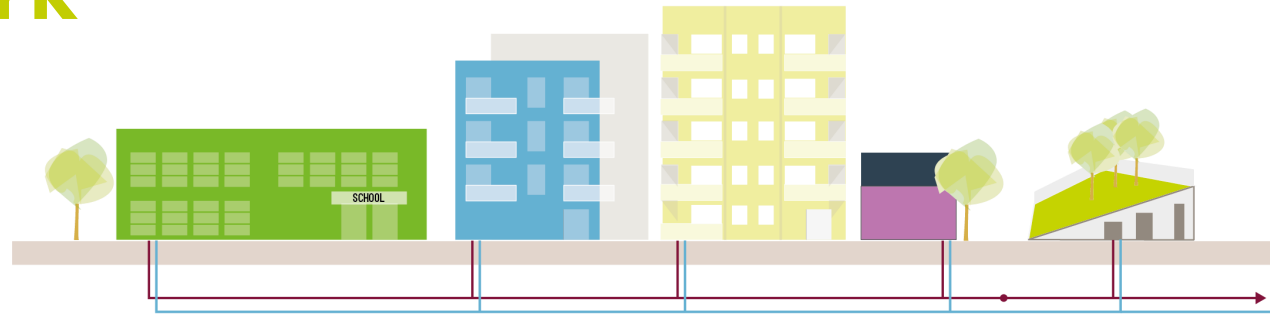
---

**Replace existing  
networks + expand to  
Notting Dale Ward**

---

# A Heat Network

That can serve all homes on the estate with clean, green energy



---

A network that can expand in the future to help other local communities achieve net zero



# How is it different from the existing network?

## Reason 1

---

No more gas, a heat pump and renewable energy source could be used:

SEWAGE

AIR

ELECTRIC

1kWh energy in = 3kWh+ out



**Do you think this location could work for an energy centre?  
(Yes / No / Maybe, vote now!)**

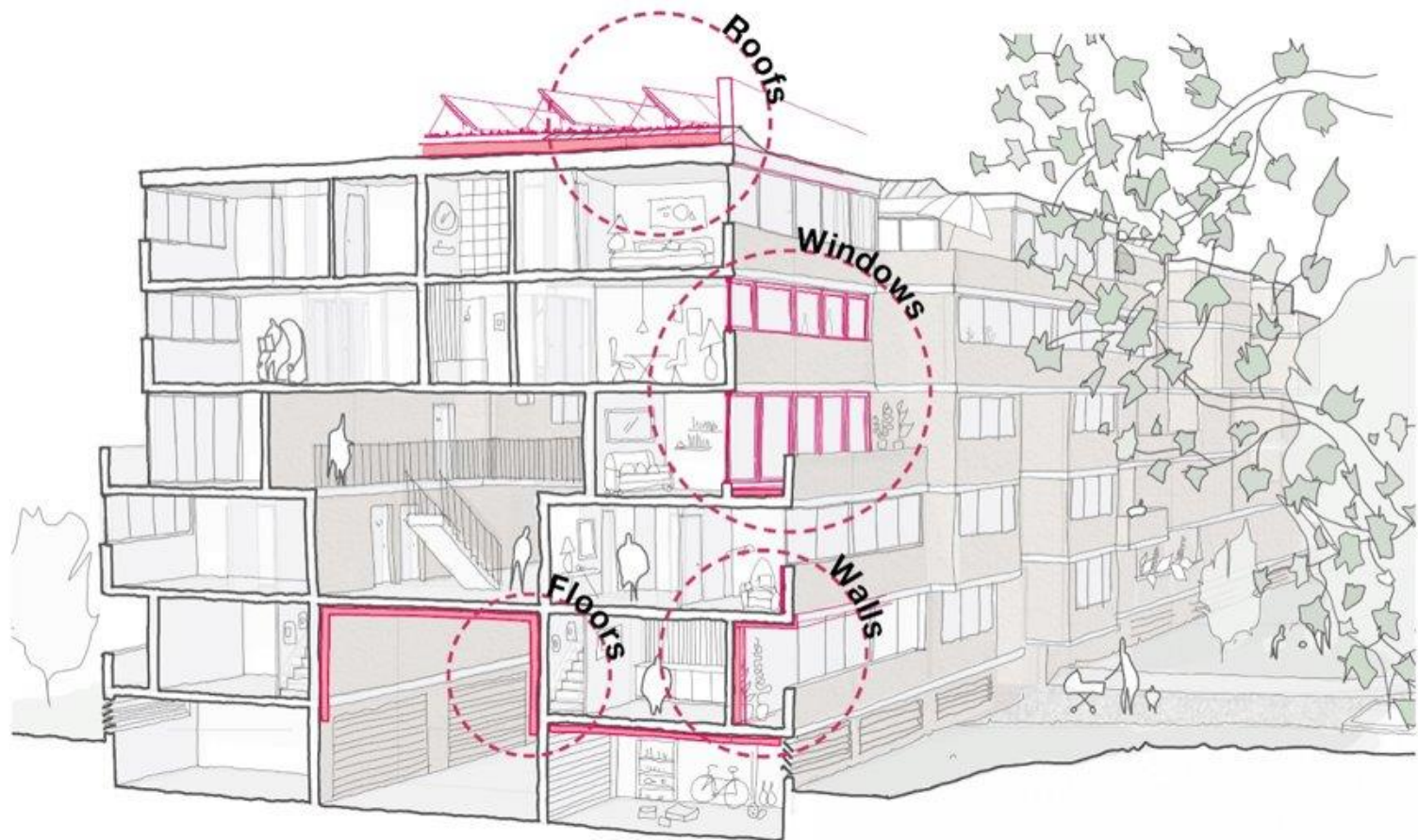




# How is it different from the existing network?

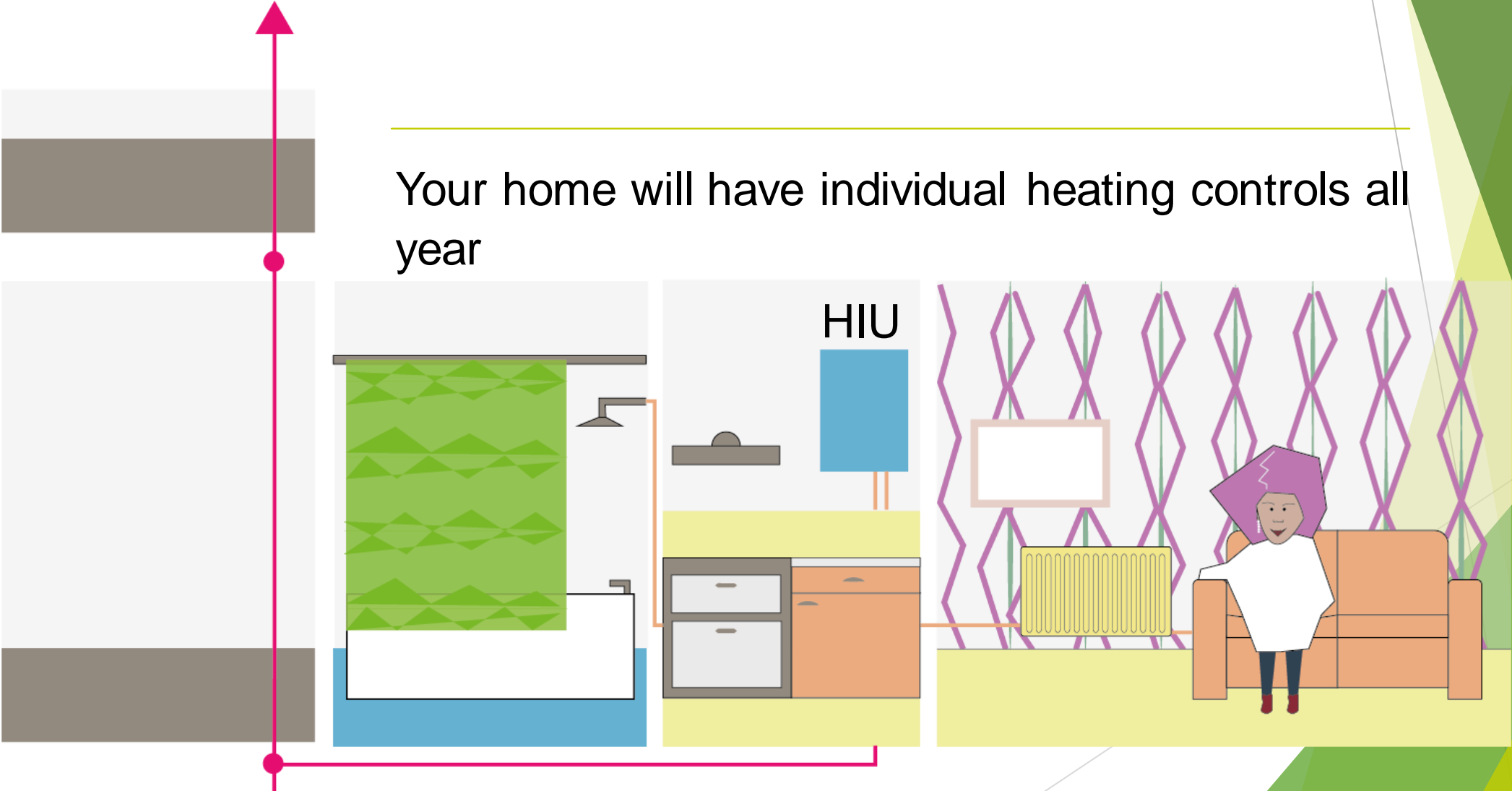
## Reason 2

It will be designed to work with the refurbishment of homes



# How is it different from the existing network? Reason 3

Your home will have individual heating controls all year





**Do you have any concerns or suggestions about the location of a Heat Interface Unit in your home?  
(Type concern and building name in chat)**



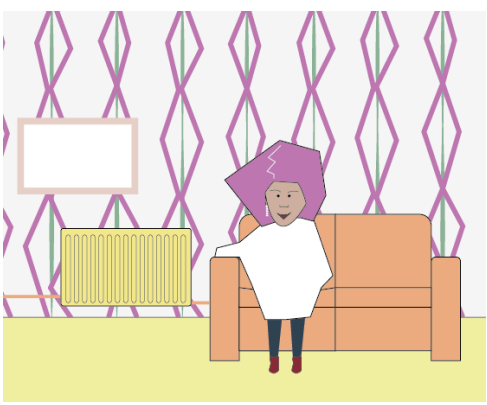
The UK's leading innovator in efficient energy provision



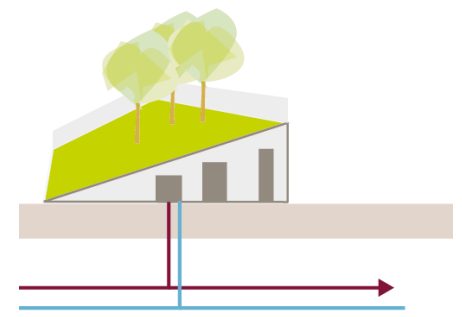
**VITAL  
ENERGI**

# Proposed Timeline

**2021 -**  
Improve domestic heating system



**2023 - 2024**  
Replace Communal Boilers with renewable heating solution



Replace plumbing through each block



**Do you have any ideas on how we can support residents during project delivery? (type in chat)**

# Resident Co-Design

- ▶ Heating and Hot Water Survey  
**(Closed)**
- ▶ Co-Design Quick Questions  
**30<sup>th</sup> March - 12<sup>th</sup> April Pop-Ups**
- ▶ Resident Focus Group with NEA  
**9 - 14<sup>th</sup> April**
- ▶ Resident Consensus  
**Mid April - Mid May**



# **Q&A**

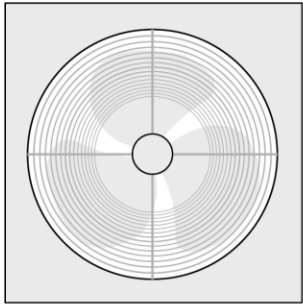
**Type in chat / raise hand**

[Janet.hall@rbkc.gov.uk](mailto:Janet.hall@rbkc.gov.uk)

# How does a heat pump work?

1

Heat is extracted  
from air



**HEAT** →  
FROM AIR