

LANCASTER WEST
NEIGHBOURHOOD TEAM

WT1



SOCIAL LANDSCAPES
CARE FOR THE EARTH • CARE FOR THE PEOPLE

Design Details

Gardens and Outside Spaces

Treadgold House March 2021



With us today



**Alfie Peacock,
Project Support Officer**



**Hannah Smith
Sustainability Project
Manager.**

With us today



Michel Thill
Founding Director



Tish Vail
Creative Director.

- **We are from Social Landscapes**
- **Welcome to our workshop 'Concept Development' to re-imagining the gardens & outdoor spaces surrounding Treadgold House**



Agenda

- 1. Recap - Social Landscapes**
- 2. Learnings from previous meetings**
- 3. Introducing design elements for each garden**
 - North Facing Garden**
 - South Facing Garden**
 - West Facing Garden**
- 4. What happens next?**

Social Landscapes is a community interest company who work with both individuals & groups to re-imagine and re-design their green spaces to support personal, social and ecological wellbeing.

We believe that healthy neighbourhoods need vibrant places and that these places need engaged communities. By using a creative, permaculture and placemaking approach to what we do, we create urban environments where people and planet prosper.

"Human connection lies at the heart of human wellbeing!"



People

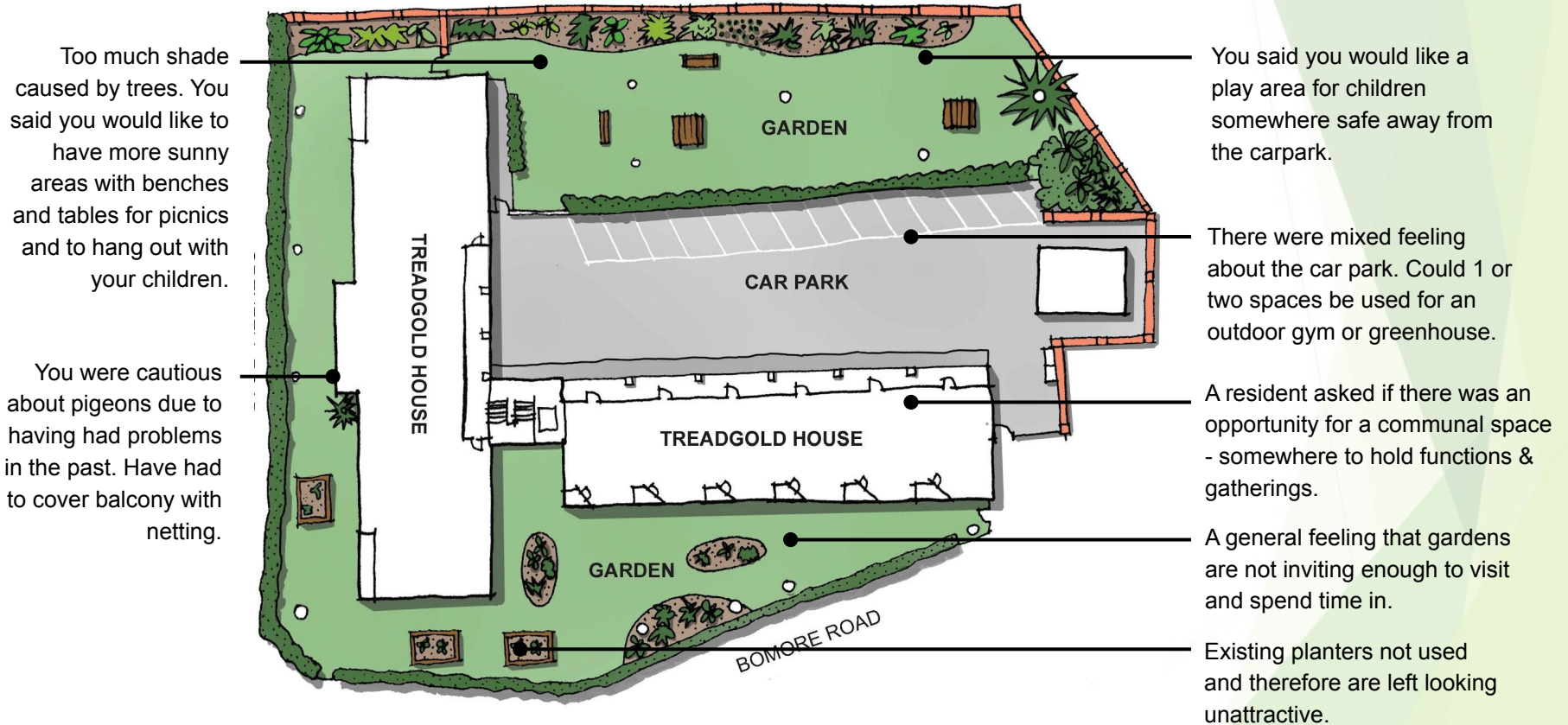


Places

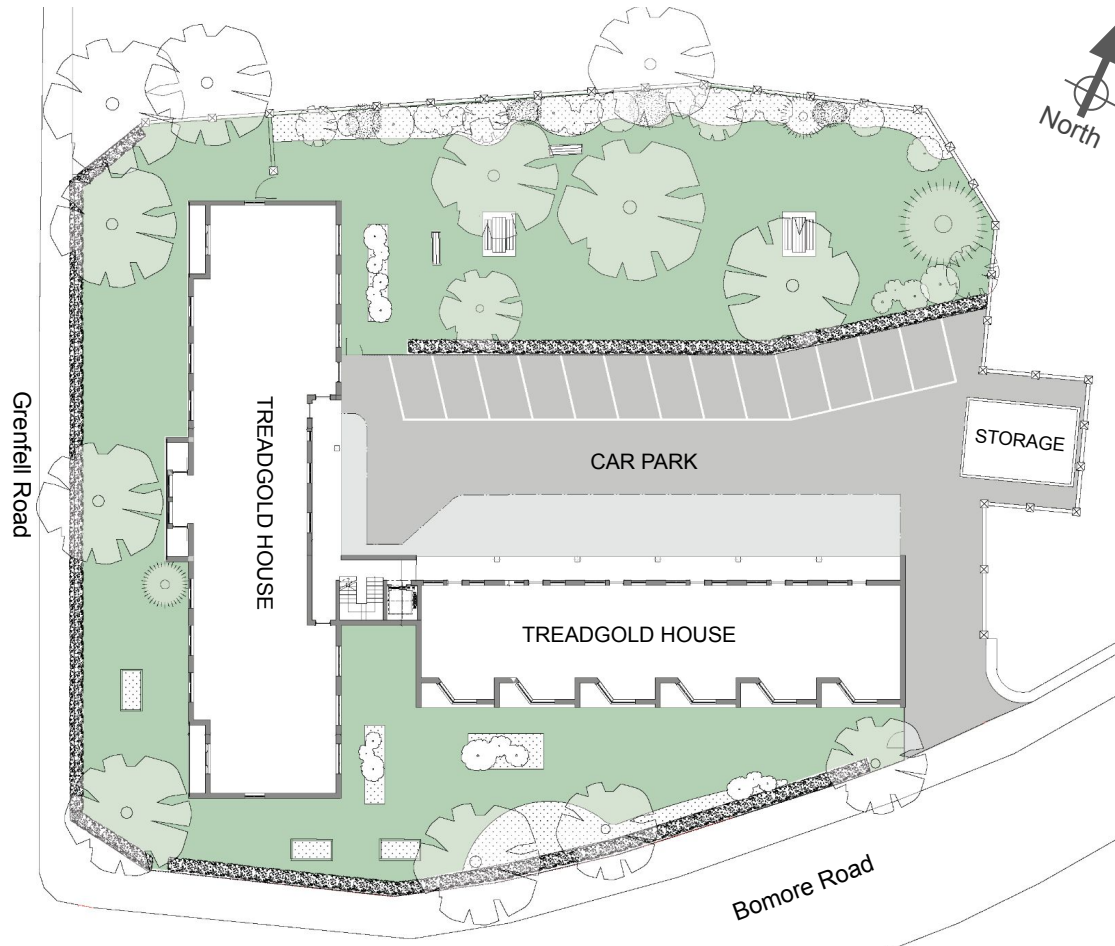


Livelihoods

Learnings from the first workshop 'Gathering Ideas'



Learnings from the second workshop 'Concept Development'

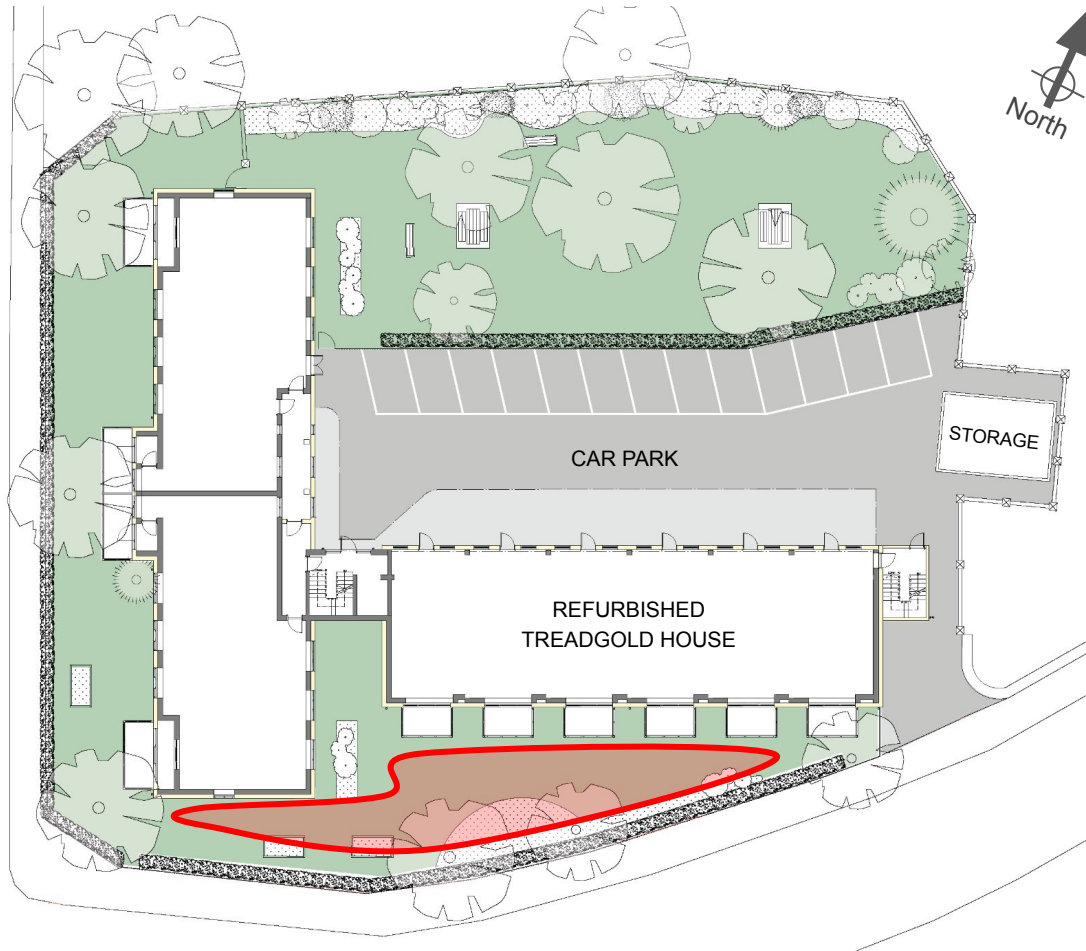


- To make the gardens more **welcoming to residents**, e.g. opening up more sunny seating and play areas, bringing in colour
- To make the gardens more **accessible - changing the way we can move through the space**, e.g. levelling the ground or creating paths, having new entrance, taking away boundaries
- To make the gardens more **functional - an extension of your home**, e.g. including opportunities to use the balconies, growing and harvesting useful plants in the gardens and planters

Introducing Design Elements to the Gardens

The background of the slide is white with abstract green geometric shapes on the right and bottom edges. These shapes are composed of overlapping triangles and polygons in various shades of green, from light lime to dark forest green. The shapes are layered, creating a sense of depth and movement. The overall aesthetic is clean, modern, and nature-inspired.

The South Garden

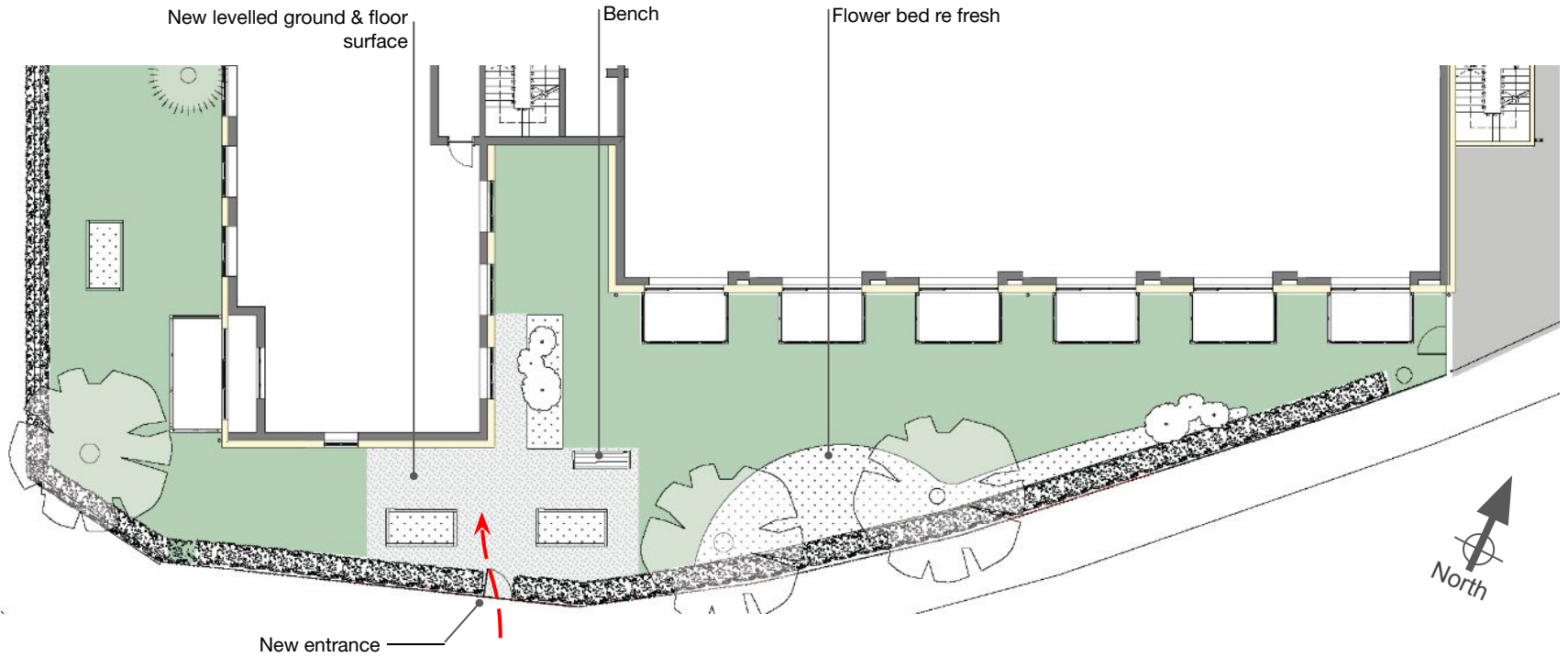


- How can we make the gardens more welcoming?
- How can we make the gardens more functional - an extension of your home?
- How can we make the gardens more accessible - changing the way we can move through the space?

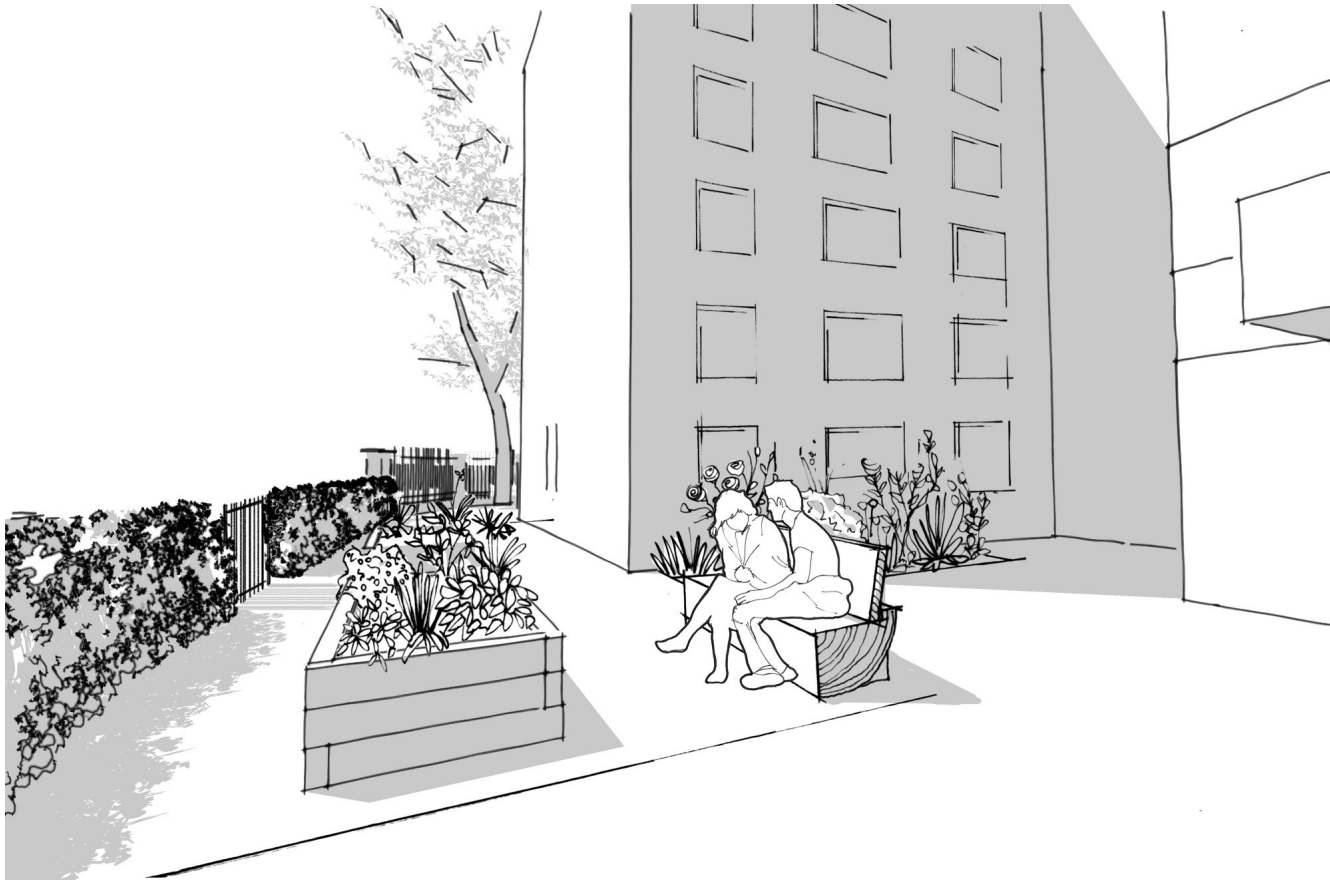


The South Garden

This garden will get most sunlight so is best for growing flowering plants and edibles. The existing flower beds and raised beds could be refreshed with herbs and pollinators, visually pleasing to look at for residents who have balconies overlooking the space. We recommend that the trees are pruned, otherwise will cast too much shade and overhang the balconies. Or otherwise they could be replaced with 3 to 4 smaller fruit trees along the south border.



The South Garden - Visual





Rosemary *Salvia rosmarinus*



Strawberry *Fragaria × ananassa*



Wild Garlic *Allium ursinum*



Redcurrant *Ribes rubrum*



Lemon Balm *Melissa officinalis*



Sage *Salvia officinalis*



Marjoram *Amaracus*



Thyme *Thymus vulgaris*



Catmint *Nepeta*



Salvia *Salvia nemorosa*

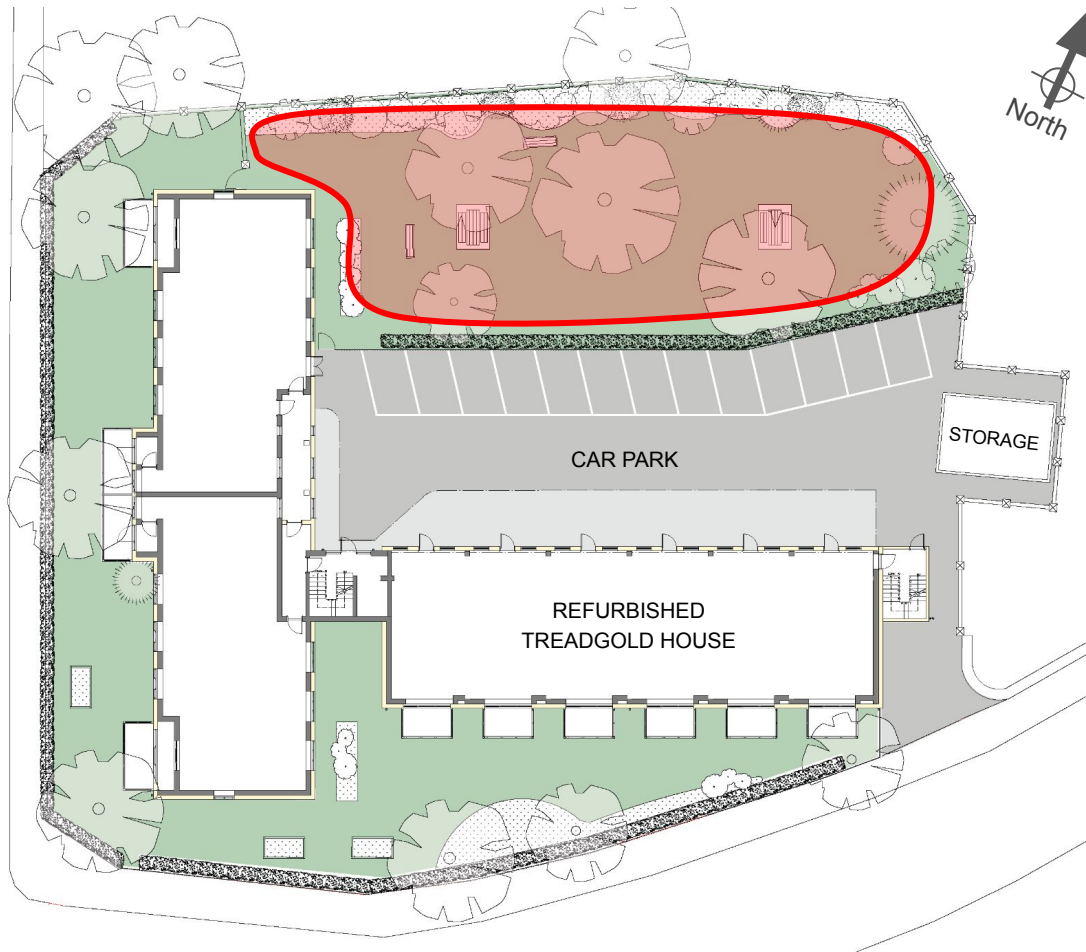


Stonecrop *Sedum 'Herbstfreude'*



Lavender *Lavandula*

The North Garden

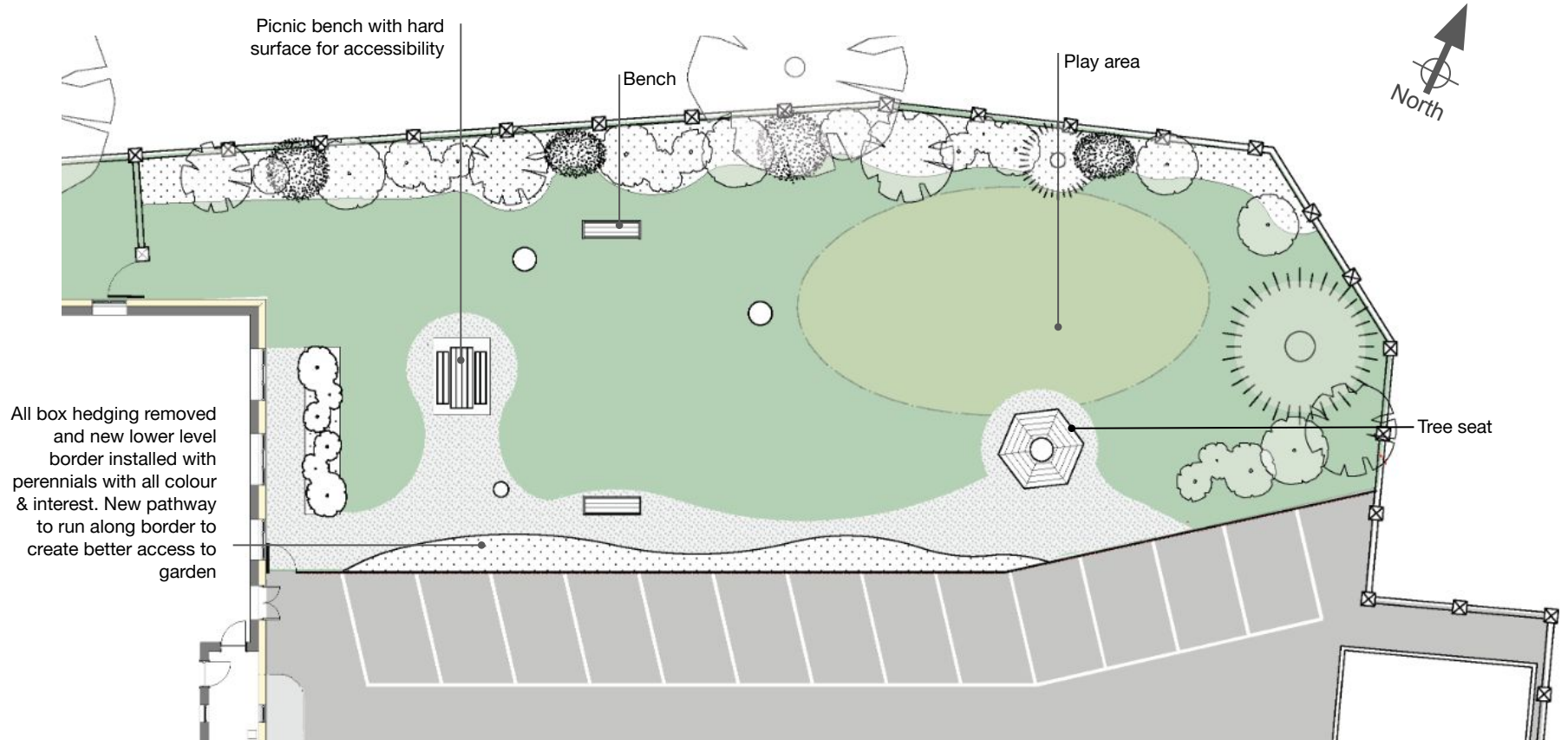


- How can we make the gardens more welcoming?
- How can we make the gardens more functional - an extension of your home?
- How can we make the gardens more accessible - changing the way we can move through the space?



The North Garden - Example 01

The North Garden will get plenty of sunlight if the trees are pruned and/or some trees are removed and possibly replaced with smaller trees.



The North Garden - Visual

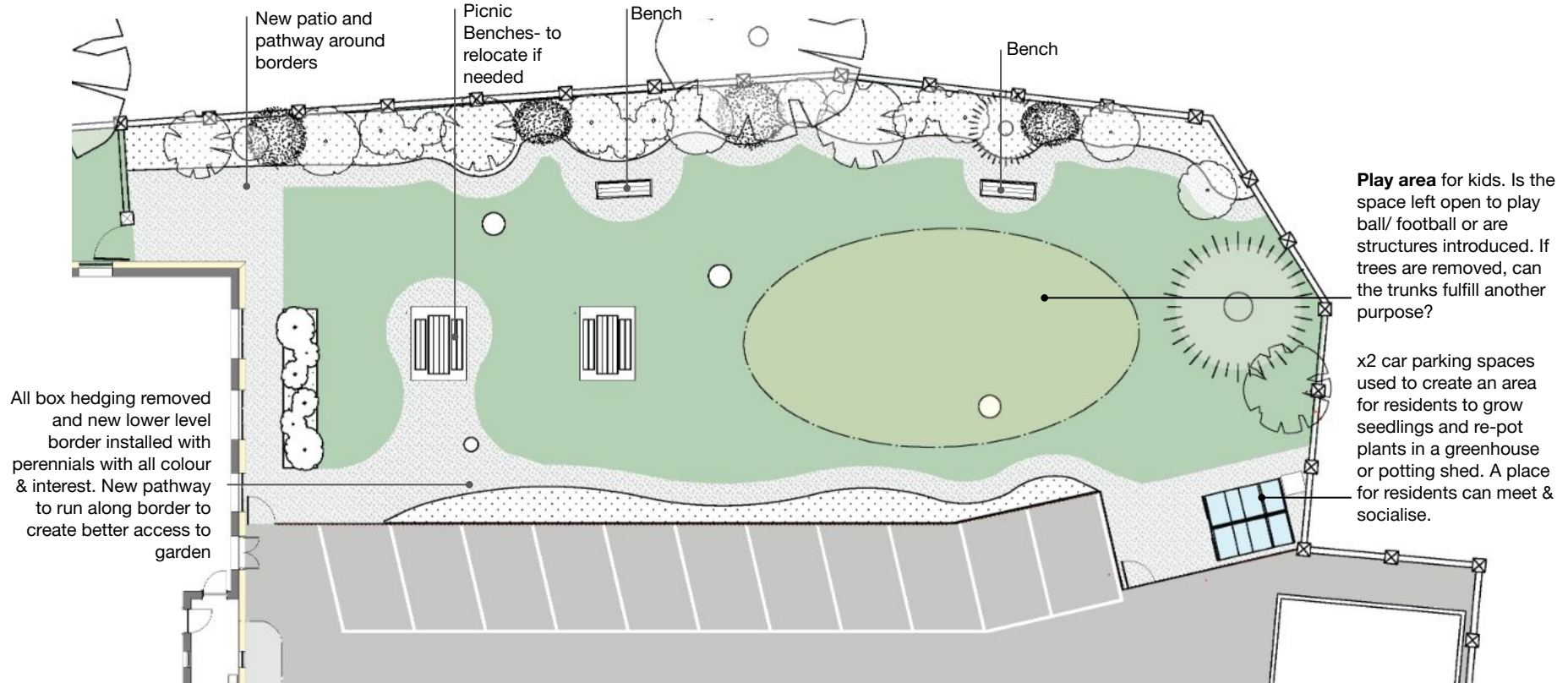


The North Garden - Visual

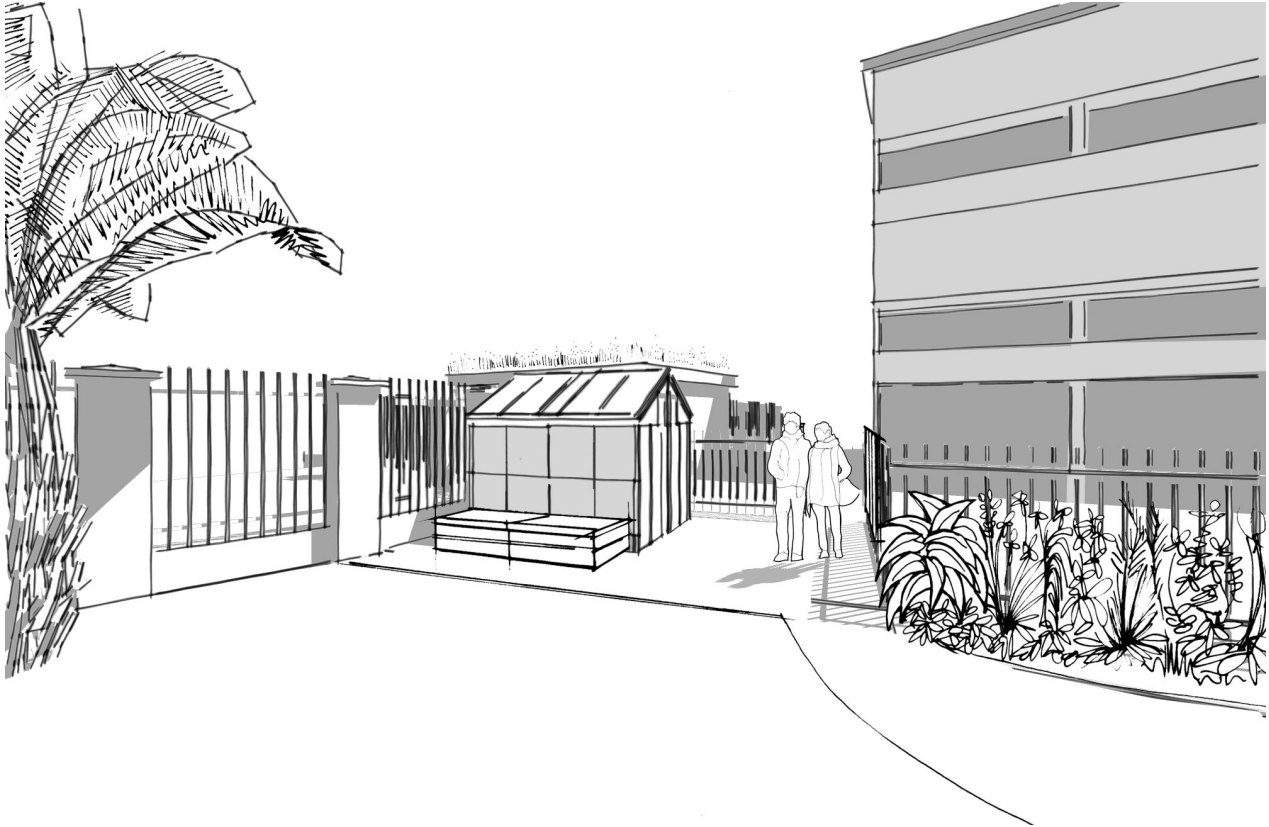


The North Garden - Example 02

The North Garden will get plenty of sunlight if the trees are pruned and/or some trees are removed and possibly replaced with smaller trees.



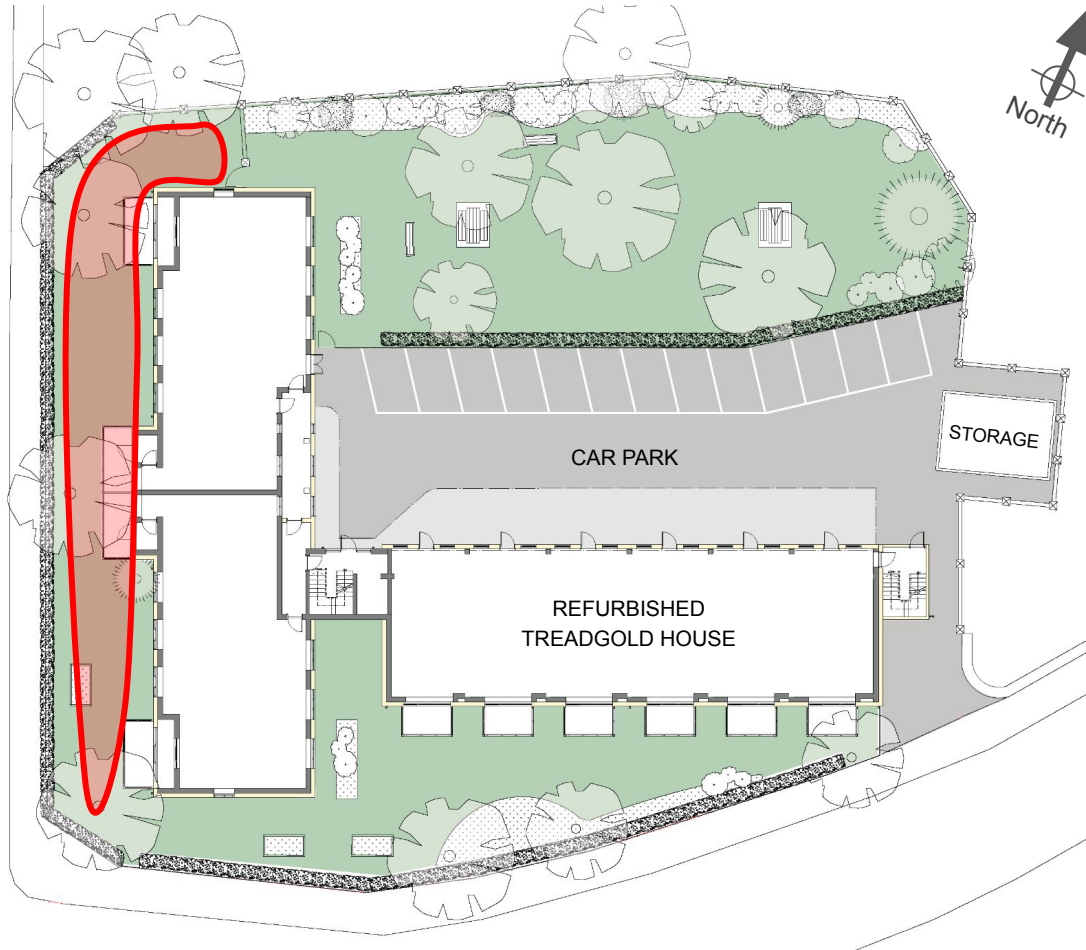
The North Garden - Visual



The North Garden - Visual



The West Garden

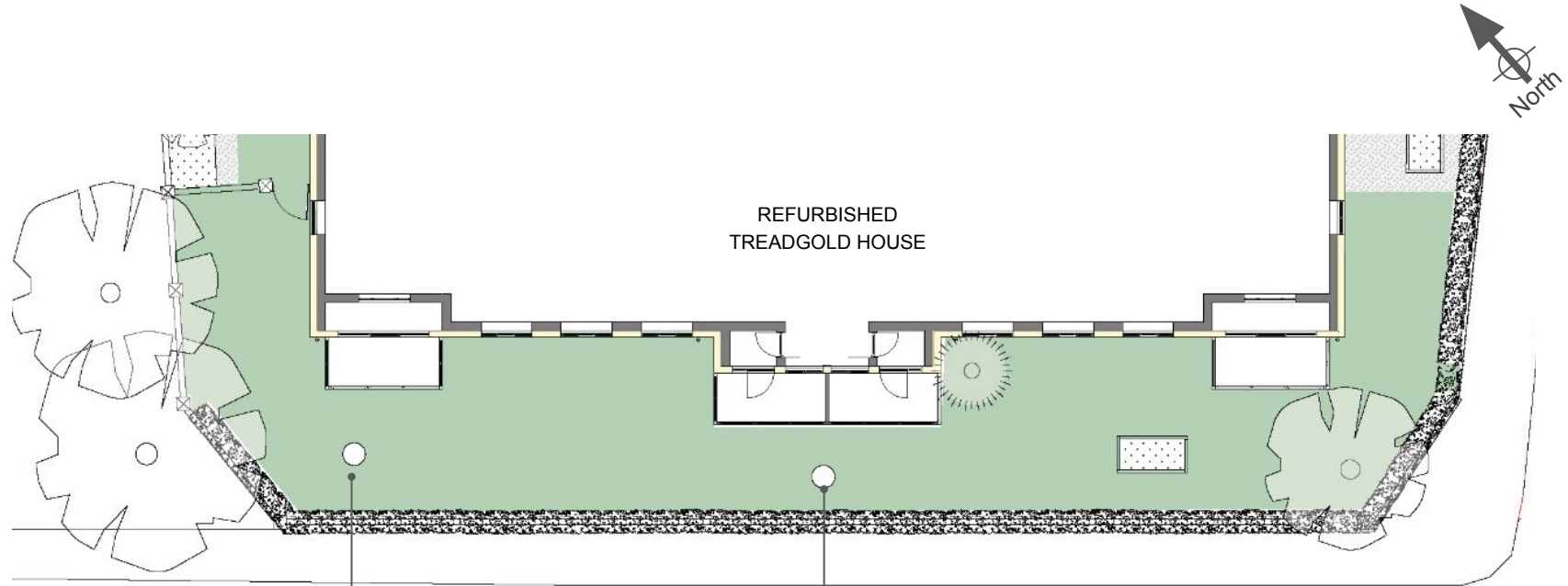


- How can we make the gardens more welcoming?
- How can we make the gardens more functional - an extension of your home?
- How can we make the gardens more accessible - changing the way we can move through the space?



The West Garden

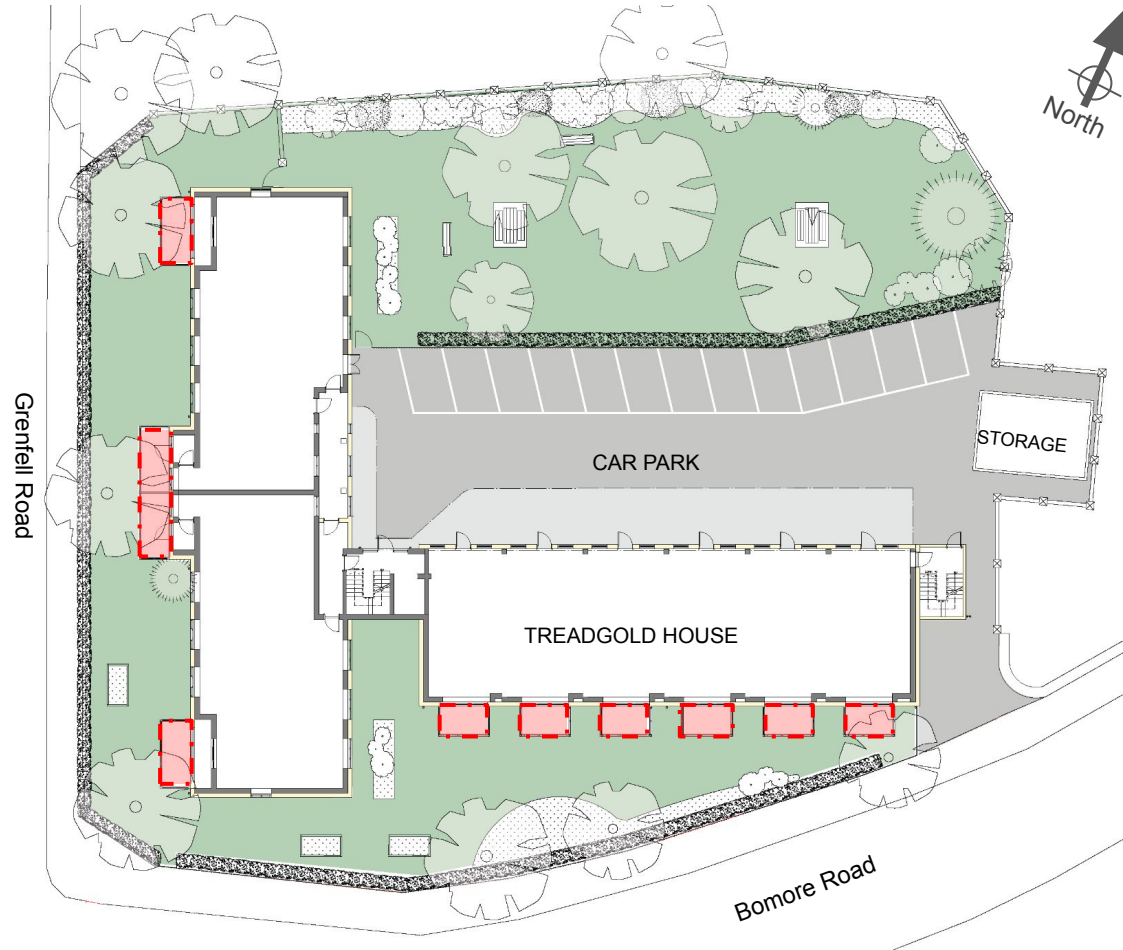
This garden will get afternoon and evening sun and is least accessible. We are suggesting for the trees to be pruned to give more light on the new balconies. The space could have some new planting if ground floor residents desire.



Tree either removed or maintained to a level where it doesn't interfere with residents balconies

Tree either removed or maintained to a level where it doesn't interfere with residents balconies

Balconies



- How can we make the gardens more welcoming?
- How can we make the gardens more functional - an extension of your home?
- How can we make the gardens more accessible - changing the way we can move through the space?

The Balconies

Residents to choose from a menu of options, including **hanging plant pots**, **planters**, **pigeon netting** which can also be used for **climbing plants** in combination with the planters to give shade and privacy, **bike hangers**, **bokashi compost bins**, to make compost from food scraps that can be used in the planters.





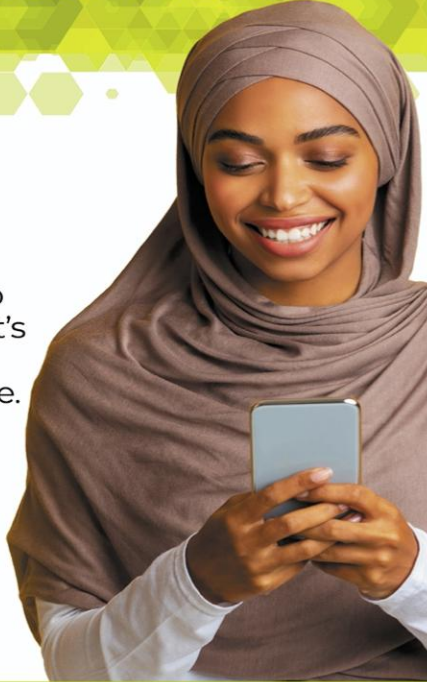
From all of us thank you!
We really appreciate your time and participation

Subscribe to our new resident newsletter Lancaster West News



Be the first to
find out what's
happening
where you live.

Subscribe using the
QR code or the link in
our Instagram bio.



Resident Enewsletter



Please specify
which block you
live in when
subscribing to
allow us to send
out block
newsletters in
the future.