

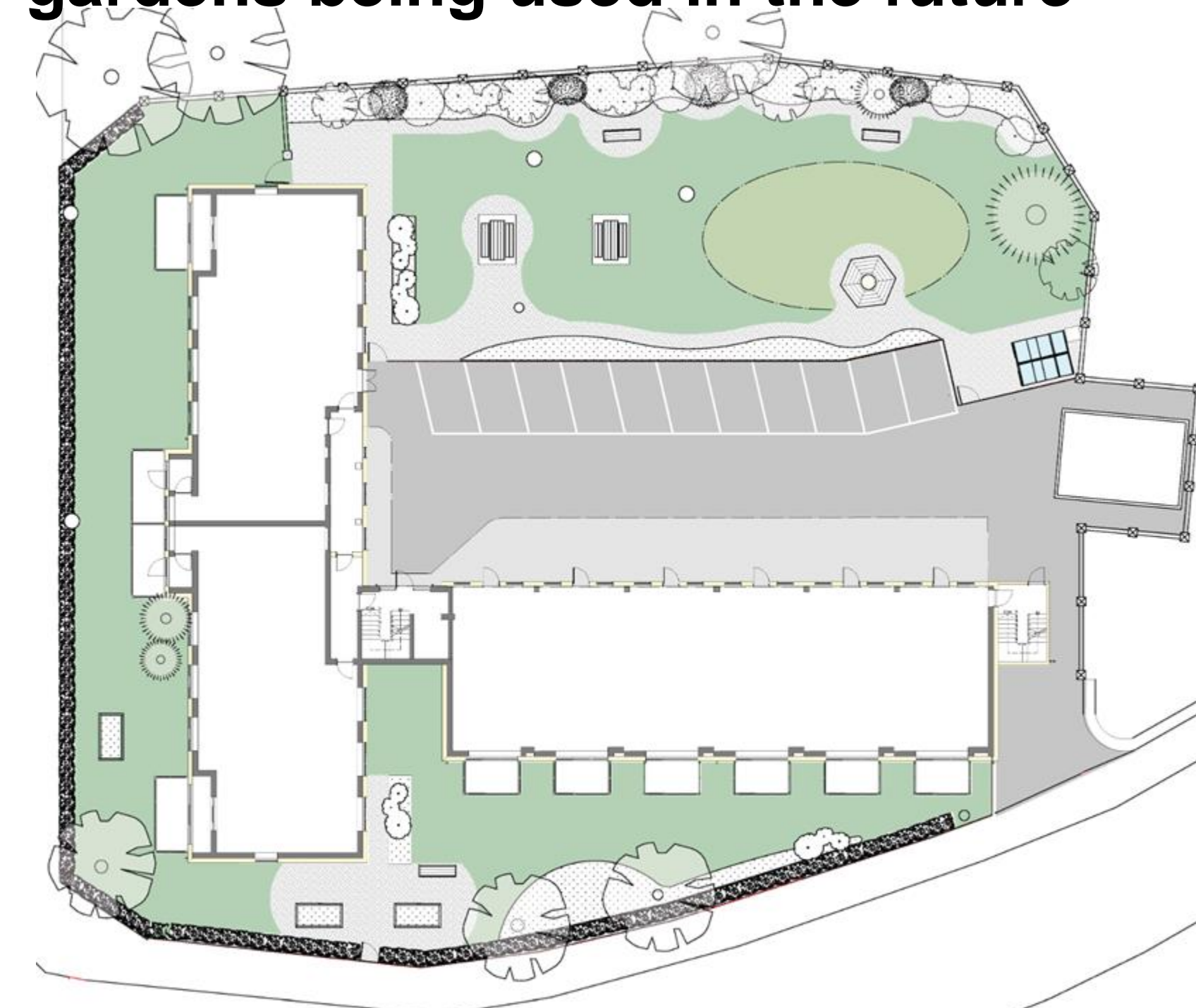


Residents would like to **make better use of the green spaces** surrounding their homes. **Brightening up the spaces** is a first step.

How residents see Treadgold House gardens being used in the future

A **communal activity area** can be used by gardeners and the residents to grow plants for the garden and the residents' balconies.

Accessibility to the gardens can be improved through new paths and picnic benches; a new access gate opens up the garden area.



A menu of options including **green walls, cycle storage, planters, bokashi compost bins** add functionality to the new balconies.



By improving the functionality and accessibility, the space holds greater potential to **foster a sense of community**, friendships, wellbeing and belonging.

