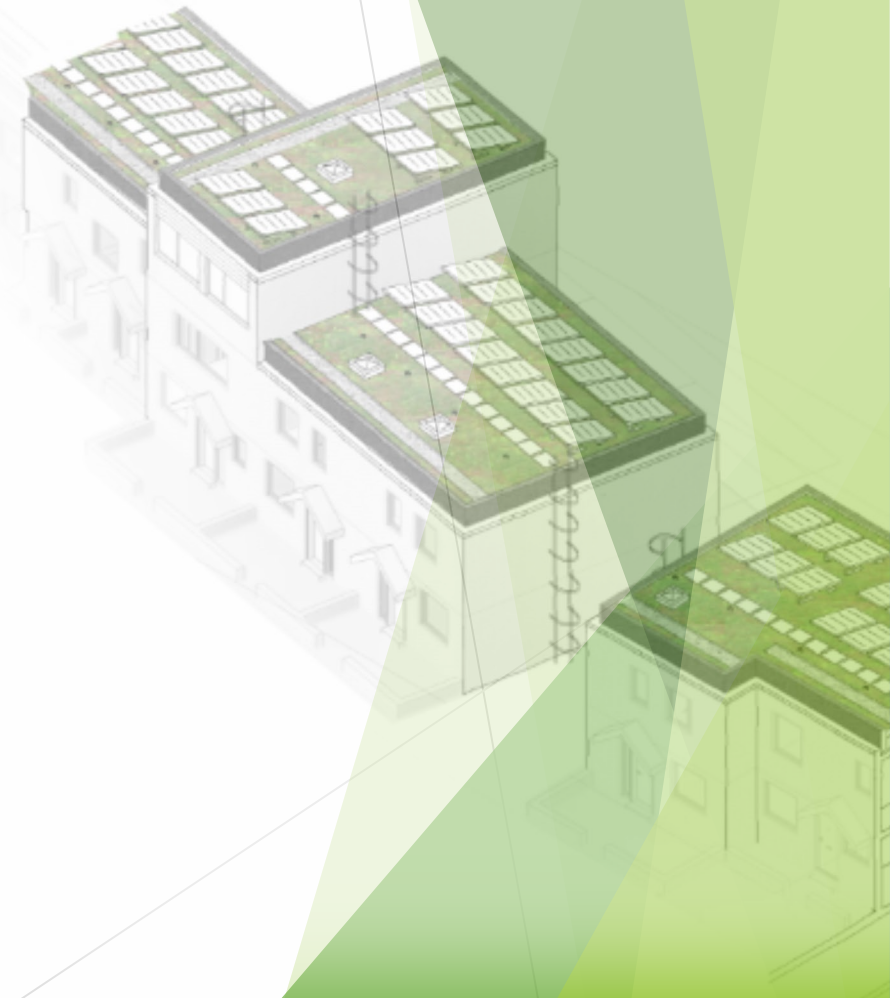


Lancaster West Sustainability Strategy

2021-2030

Hannah Smith
Sustainability Project Manager



Our vision is to become the **UK's biggest eco-neighbourhood**



Our objectives are to...

- Become a **model 21st century estate** and **Future Neighbourhood**
- Go **carbon-neutral** by 2030
- Improve **air quality** to levels recommended by the World Health Organisation
- Become a **green estate** with a thriving environment
- Create a **circular community** with minimal waste
- **Refurbish every home** to a high standard
- Eradicate **fuel poverty**
- Promote **active transport** and electric vehicles

What is sustainability?

Sustainability means '**meeting the needs of the present without compromising the ability of future generations to meet their own needs**' by...

- Reducing carbon emissions
- Improving health and wellbeing
- Increasing green spaces
- Minimising waste
- Tackling pollution

Sustainability is important for all of us and for our planet

We're facing a global environmental crisis

- Climate change
- Loss of biodiversity
- Depleting natural resources

The changes we need to make will also make Lancaster West a better place to live

- Decent homes
- Improved air quality
- Green space



The policy context

2030

Lancaster West to become carbon-neutral

Kensington and Chelsea Council operations to become carbon-neutral

2035

UK to reduce emissions by 78% compared to 1990 levels

2040

Royal Borough of Kensington and Chelsea to become carbon-neutral

2050

UK to become carbon-neutral

Why become carbon-neutral?

Carbon emissions and other greenhouse gases are causing climate change and pollution, which are **harming our planet and our health**.

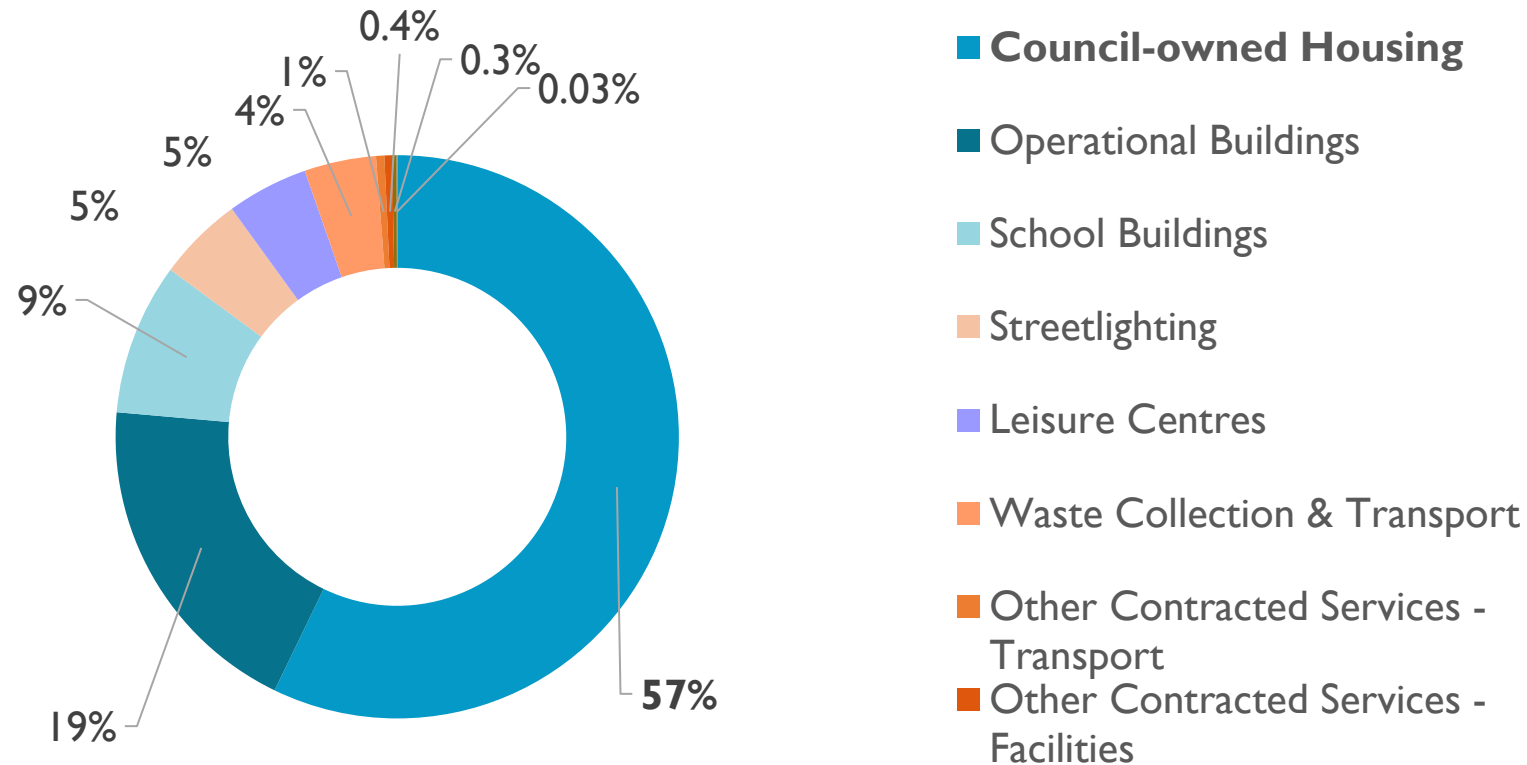
The UK Government has set a target to become net-zero by 2050 and soon a lot of these things will be law. We're getting a head start now to do things in a way that suits your priorities and needs.

What does a carbon-neutral estate mean?

Carbon-neutral, or net-zero carbon, **means an overall balance between carbon emissions produced by the estate and carbon that we remove from the atmosphere.**

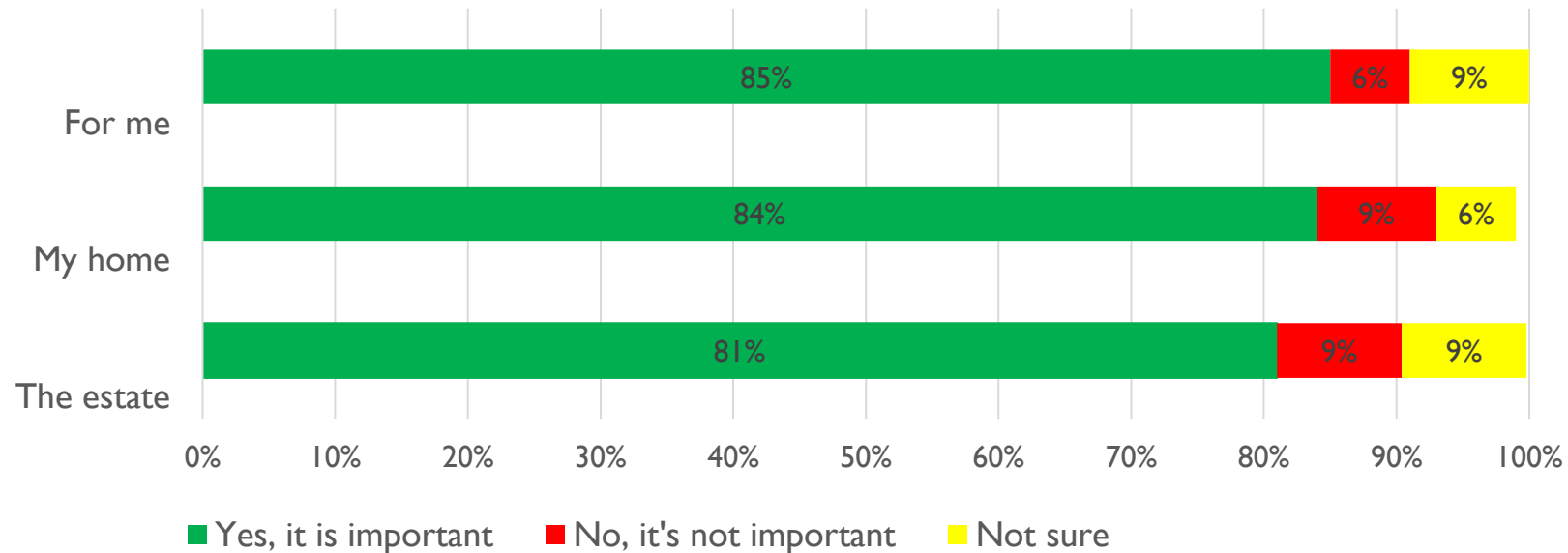
In practice, it means that we need energy efficient homes, a renewable and reliable energy supply, lots of green space and sustainable behaviours like recycling and composting.

57% of the Council's greenhouse gas emissions come from its housing stock



Over 80% of residents think carbon-neutrality is an important priority

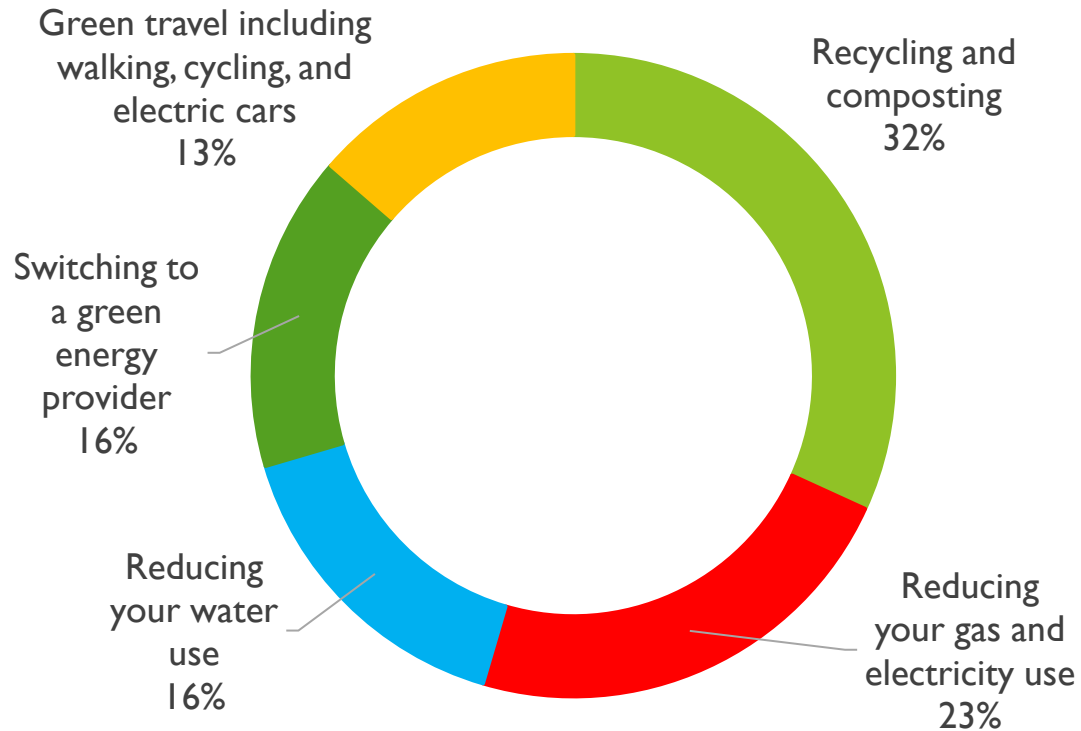
Do you think being carbon-neutral is an important priority for you, your home, and the estate?



Results from Lancaster West
Sustainability Survey, Jan 2021

Residents have shared clear priorities

What activities and actions can the Lancaster West Neighbourhood Team help you to do more of?



“A zero waste food shop on or near the estate would be incredible”

“I’d like our air quality to be improved. So, planting trees and surrounding us by plants and greenery to counteract car pollution from busy local roads”

“If there was designated parking places for residents of the estate with electric charging facilities, I would definitely consider getting an EV”

Results from Lancaster West Sustainability Survey, Jan 2021

What going carbon-neutral involves in practice



**Identifying needs
and developing a
strategic approach**



**Horizon scanning
and learning from
others**



**Maximising funding
opportunities**



**Understanding and
developing feasible
options**



**Engagement,
codesign and
comms**



**Delivering
improvements**



**Tracking progress
and measuring
success**



**Sharing lessons and
pioneering
approaches**



**Collaborating with
experts and
partners**

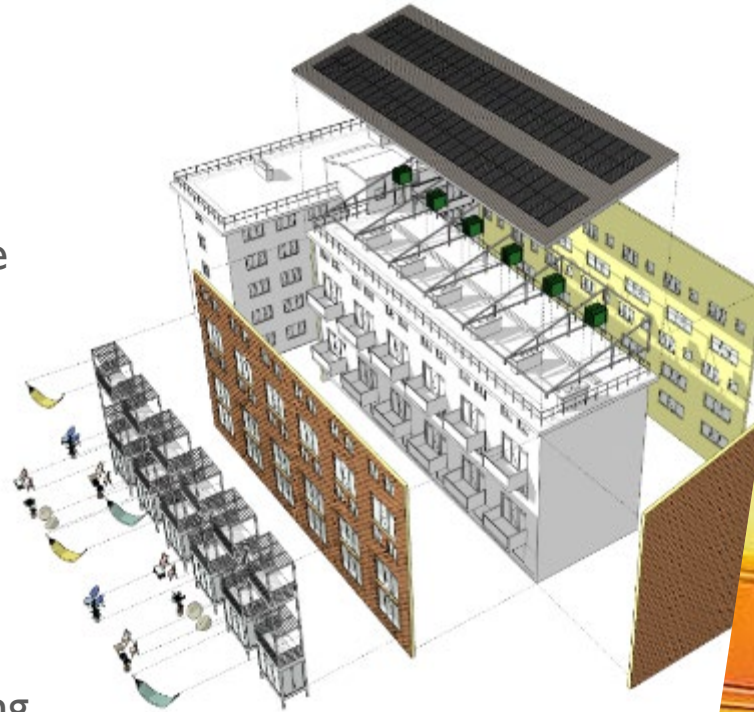
Our 5 key themes

1. Making **homes warm, comfortable and energy efficient**
2. Switching the **energy** we use to a **clean and green supply**
3. Creating a **garden estate** with a **thriving environment**
4. Reducing **waste** and increasing **recycling**
5. Supporting residents to make **sustainable lifestyle choices** and reducing the **carbon footprint** of our services

I. Making homes warm, comfortable, and energy efficient

How?

- Retrofitting all homes with a whole-house fabric first approach, including:
 - High quality insulation
 - Triple-glazed windows
 - Mechanical ventilation and heat recovery
 - Energy efficient appliances and lighting
- Using modern methods of construction to minimise disruption and environmental impact



I. Making homes warm, comfortable, and energy efficient

- All properties to reach EPC rating C or above after full refurbishment
- Targeting EnerPHit standard where possible – the highest standard of energy efficiency for refurbishment projects
- High standards of comfort and wellbeing

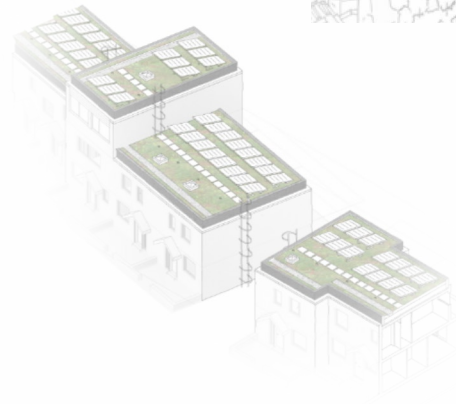
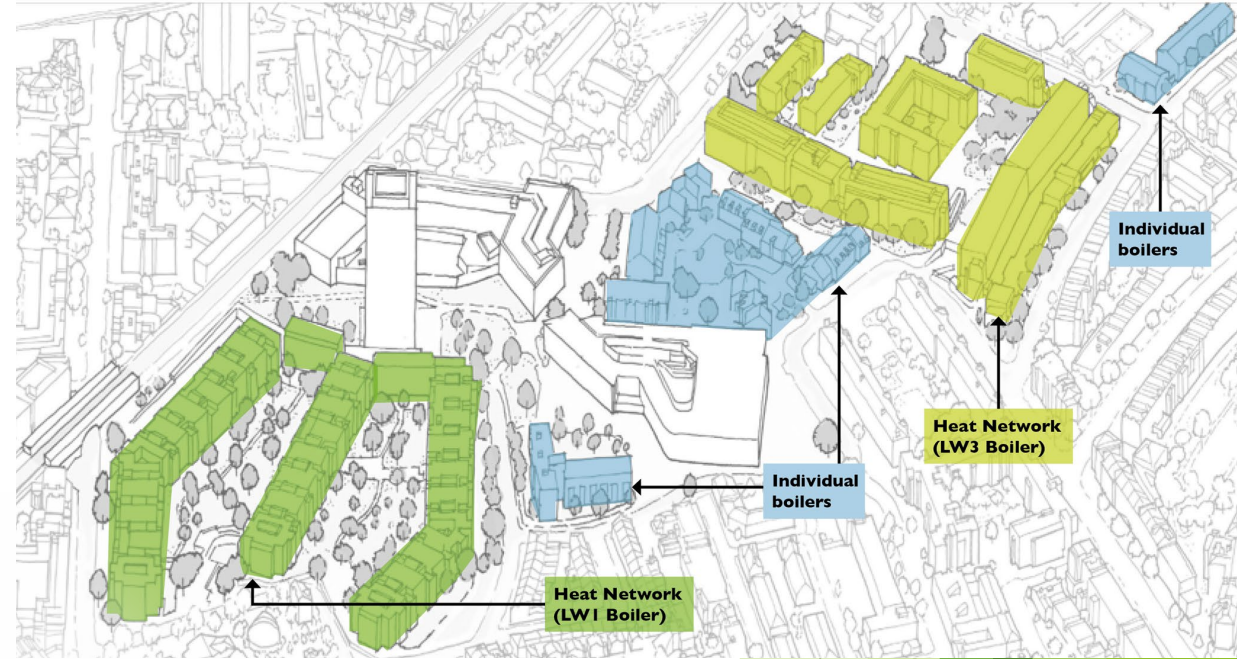
Pre-Refurb EPC Rating	%
A	0
B	0.5%
C	24%
D	60%
E	14.5%
F	1%
G	0%

Important measures	EnerPHit target
Space heating/cooling demand	25 kWh/m²/a
Energy demand	120 kWh/m²/a
Airtightness	1.0 n50 l/h
Thermal bridges	0.01 W/MK
Overheating frequency (>25C)%	10%

2. Switching the energy we use to a clean and green supply

How?

- Phasing out gas by 2030
- Developing a low carbon heat network
- Exploring other renewable technologies like solar panels and heat pumps
- Removing gas from voids and switching to green energy providers



What does success look like?

Our vision is to deliver a nationally significant model heat network. The zero carbon Notting Dale Heat Network will put residents first, rely solely on renewable heat sources, and provide affordable heating and hot water whilst tackling fuel poverty.

Priorities for the heat network:

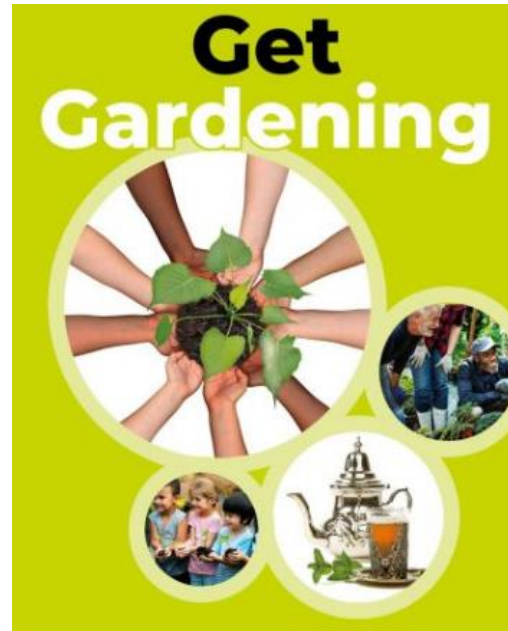
- 1. Put residents first:** achieving at least 80% resident satisfaction with the heat network customer experience and be more affordable than alternatives
- 2. Set the standard for 21st century housing:** delivering warm homes, tackling fuel poverty, and achieving the Council's zero carbon ambition for Lancaster West.
- 3. Help RBKC move towards carbon neutrality by 2030:** working in partnership to achieve objectives for housing, planning, and environment, and Grenfell recovery

3. Creating a garden estate with a thriving environment

Only ½ of the UK population has easy access to green space; on Lancaster West around 10% of residents have access to private green space

How?

- Turning grey areas of the estate green
- Growing herbs, vegetables and fruit in our gardens
- Developing volunteer opportunities for the local community
- Exploring the potential to install green roofs and walls wherever possible



4. Reducing waste and increasing recycling

45% of global emissions come from making, transporting, using, and disposing of materials

How?

- Developing a waste management strategy for Lancaster West
- Following circular economy principles by keeping stuff in use for as long as possible
- Making it easier for residents to recycle by trialling new waste collection initiatives
- Using hot bins to compost food waste, used for gardens on the estate



5. Support sustainable lifestyle choices and reducing the carbon footprint of our services



How?

- Codesigning the refurbishment and empowering residents to decide how to improve the energy efficiency of homes
- Running events to support knowledge and behaviours
- Rolling out smart meters to enable residents to see and reduce their energy use
- Installing electric vehicle charging points across the estate and encouraging active transport

Any questions?

Email: hannah2.smith@rbkc.gov.uk

Website: www.wearewll.org

Follow us on Instagram: [@lancasterwestneighbourhoodteam](https://www.instagram.com/lancasterwestneighbourhoodteam)

