



Notting Dale 2030

Future Neighbourhood

Putting a Green Recovery at the heart of Grenfell Recovery



Our partners



THE
COMMON
GROUND
PROJECT



Urbanwise.London



Our vision - Notting Dale 2030

Our vision is for Notting Dale to become the UK's largest eco-neighbourhood, putting a green recovery at the heart of Grenfell recovery.

We will do this by:



Taking a fabric first approach to **decarbonising buildings**, and providing **clean, green, local energy** to move towards **net-zero by 2030**



Improve air quality, health and wellbeing, and grow a network of “**garden estates**” and **green corridors accessible for everyone**



Co-design with residents a strategy to ensure we deliver a **thriving local circular and green economy**, with **new jobs, skills and high levels of engagement**

Our context

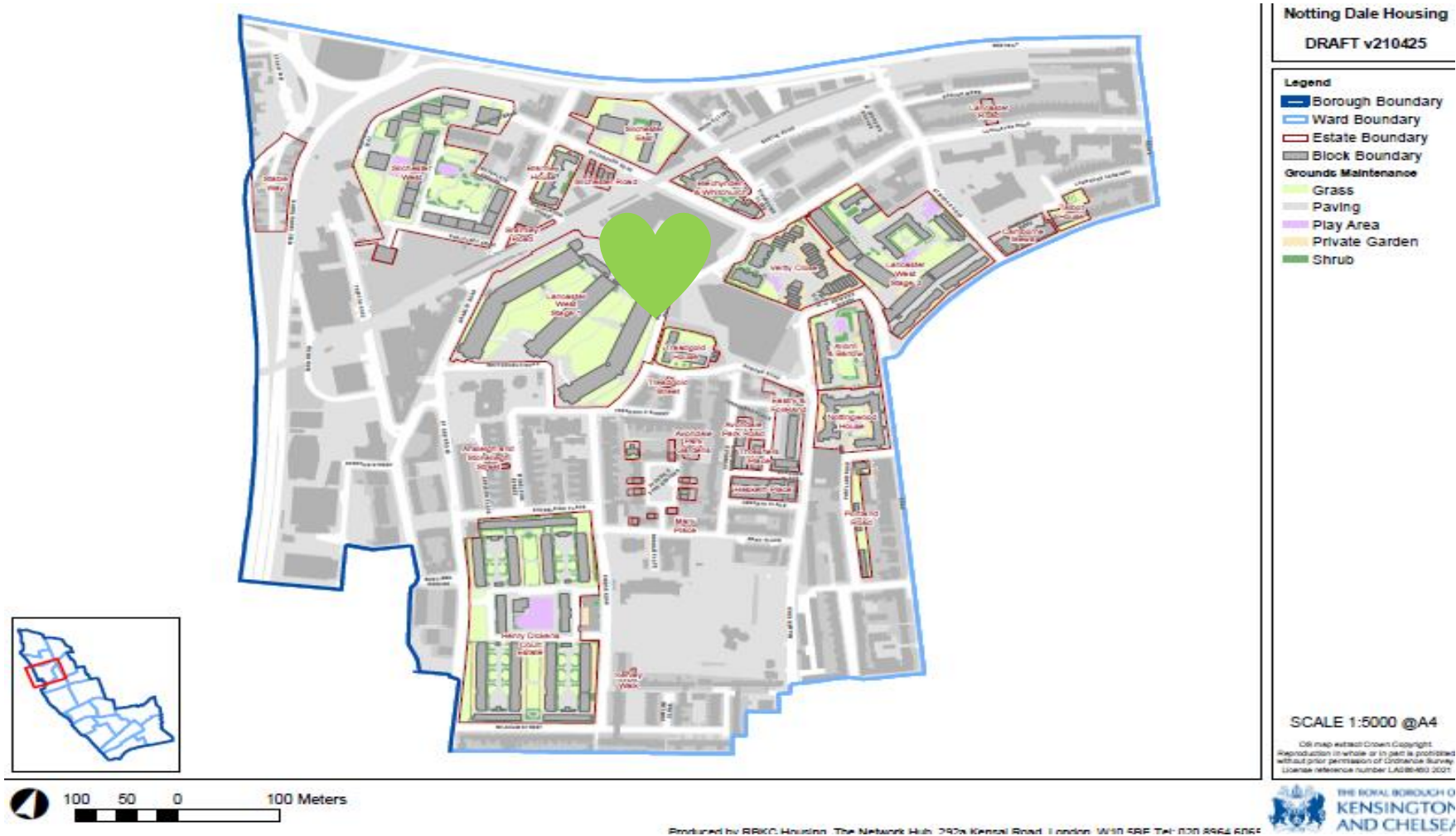
Notting Dale is the ward which experienced the Grenfell Tragedy on 14th June 2017

70% of all homes in Notting Dale are social housing.

- Across all estates, **~75% are BAME**, including prominent **Moroccan and Somali communities**
- **25% homes are overcrowded** in social housing, and 15% across all homes in the ward
- **10% residents have an accessibility issue** with their home
- **5% households have at least one person** who can't speak or read English



Notting Dale is 70% social housing

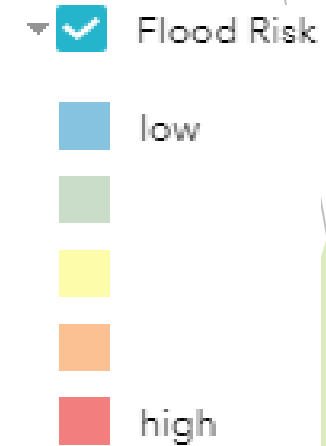
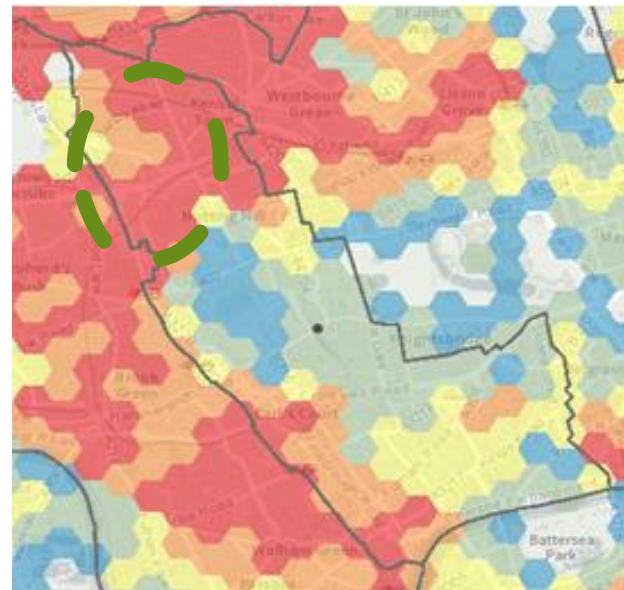
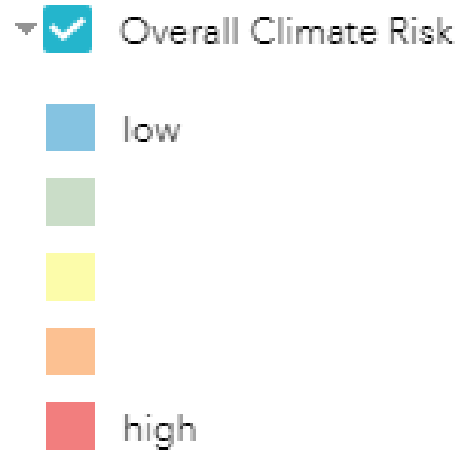
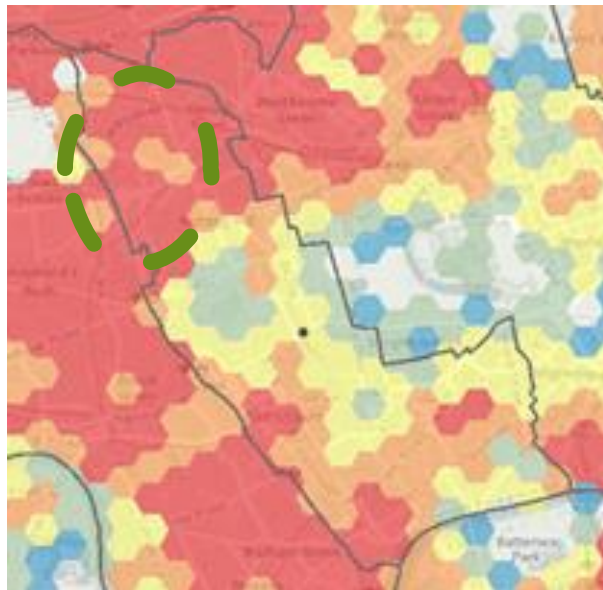


A neighbourhood with climate and flood risks

🌡️ Notting Dale ward lies in an area of **high climate and flood risk**

Meaning:

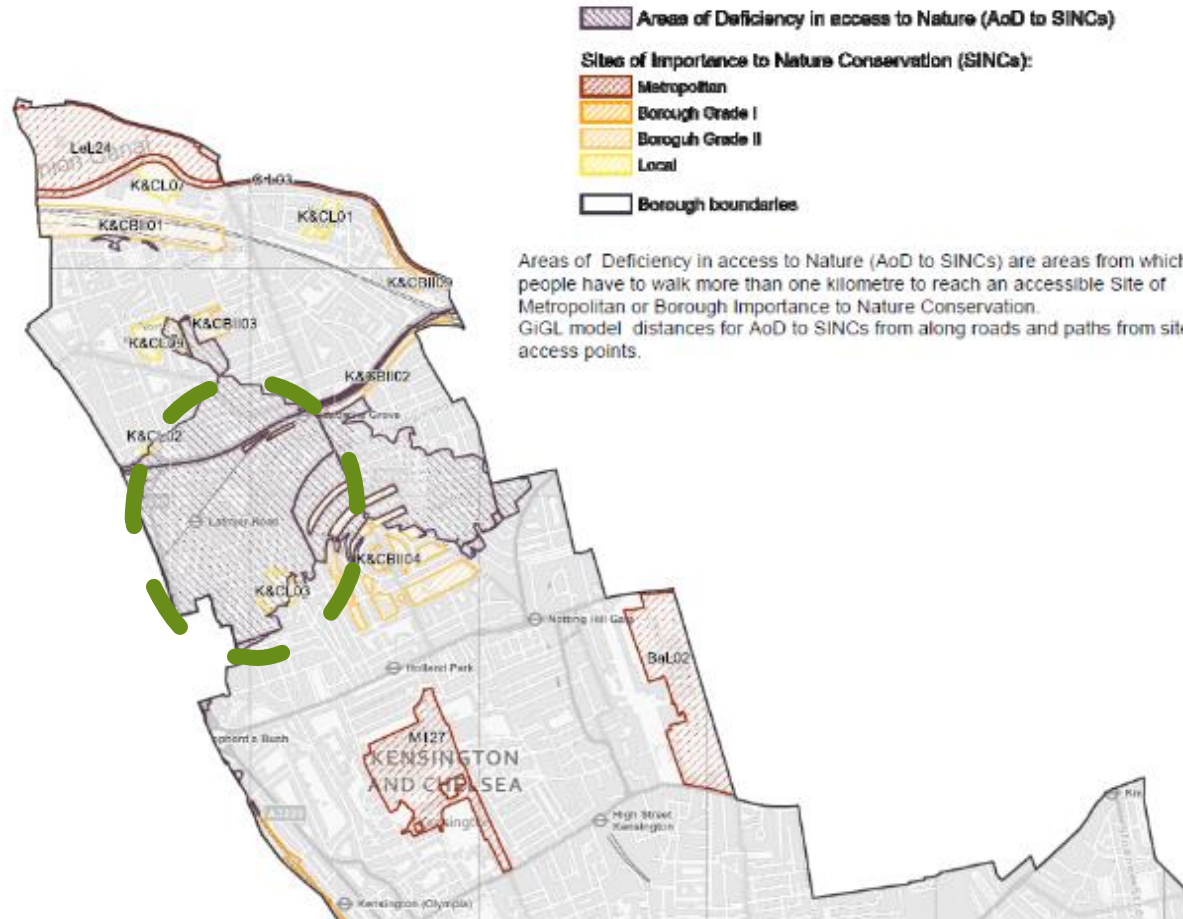
- Heavy exposure to climate change
- Vulnerable to catastrophic impacts, especially flooding



A neighbourhood deficient in nature

 Notting Dale is **deficient in access to nature**

 Surveys have found **poor quality of habitat and biodiversity** across the ward

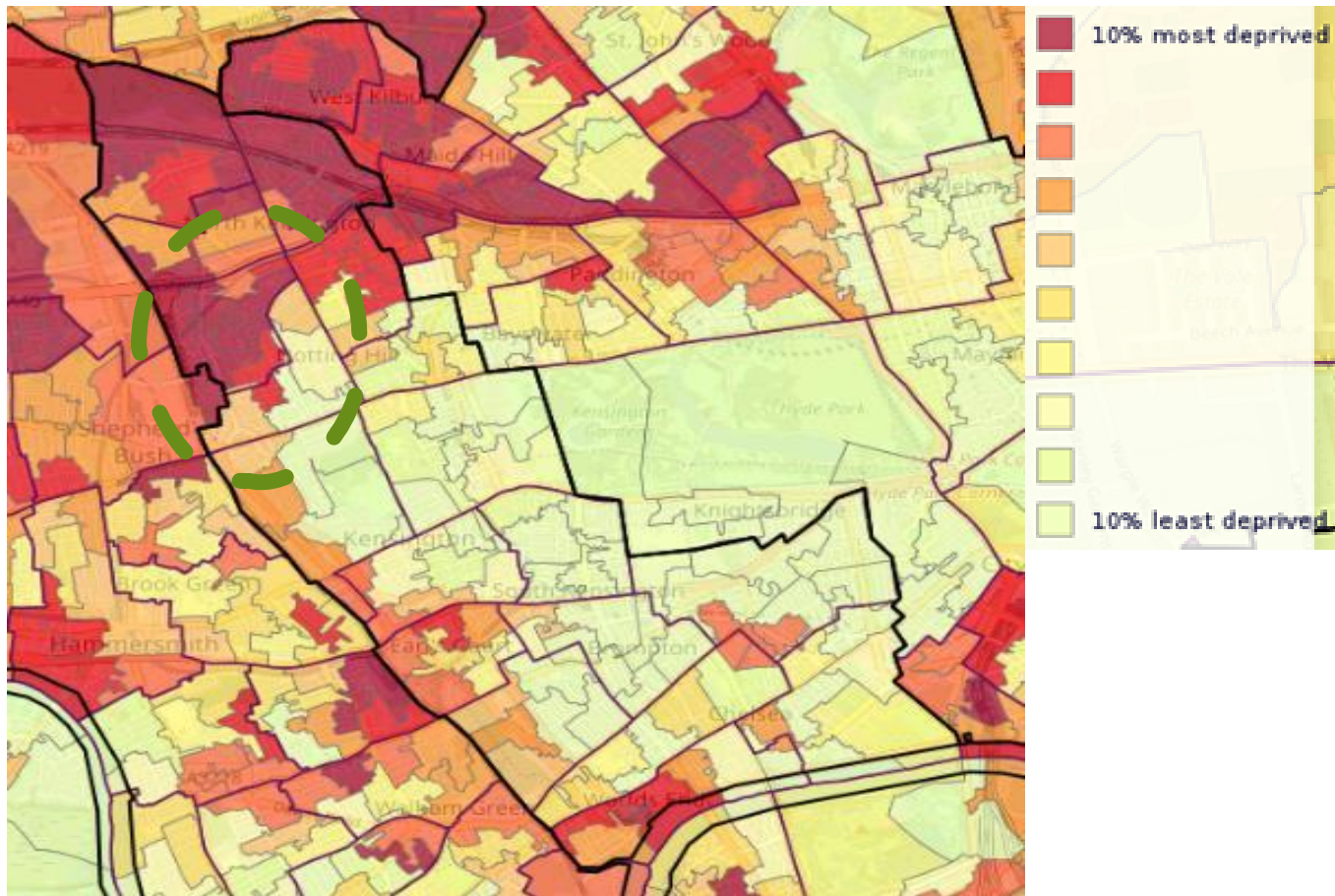


This map from GIGL shows how much of Notting Dale is within an area deficient in access to nature

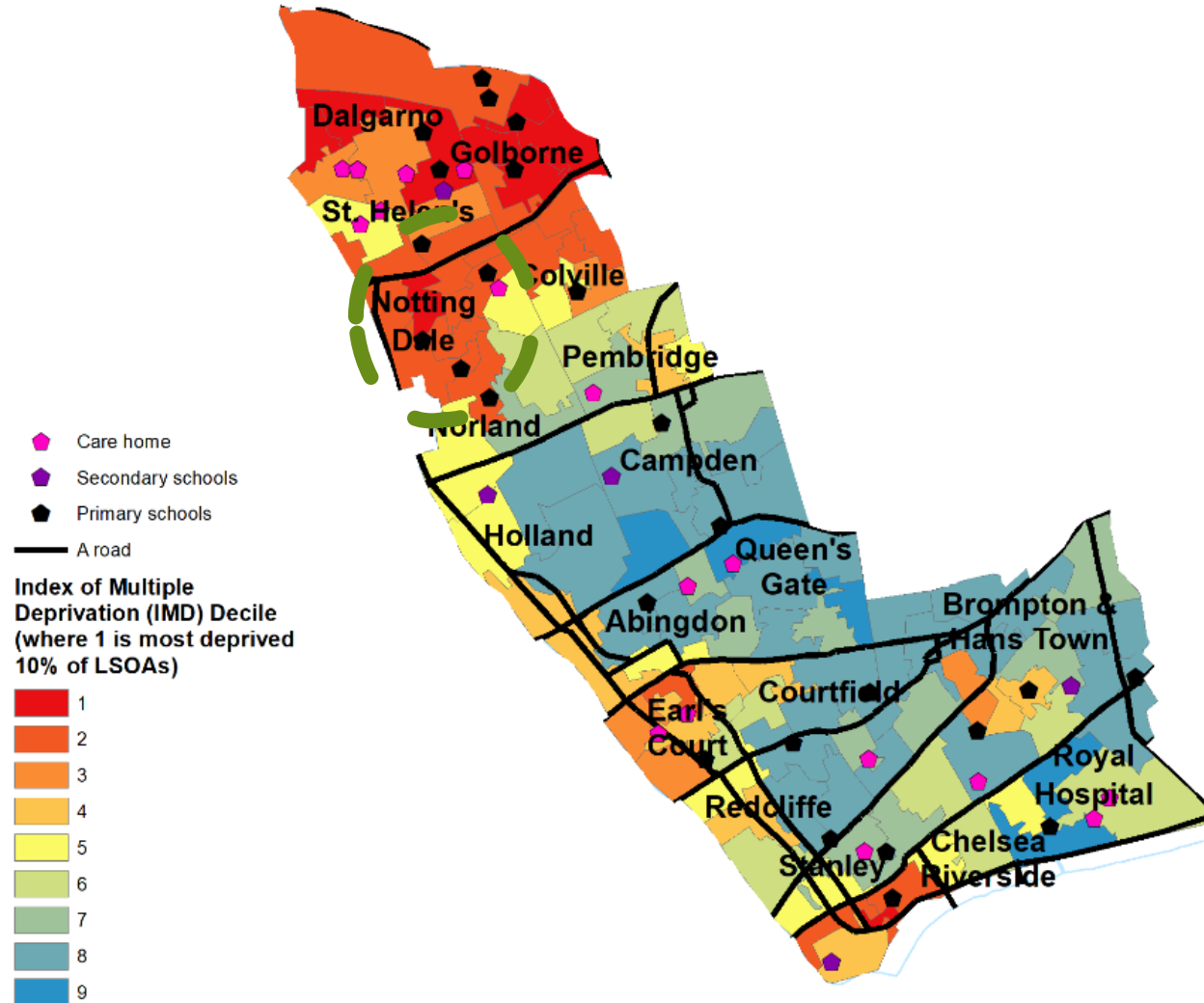
These areas are over a 1km walking distance from Sites of Importance for Nature Conservation

A neighbourhood with socio-economic inequality

☒ Notting Dale has **high indices** of socio-economic deprivation



A neighbourhood with poor air quality



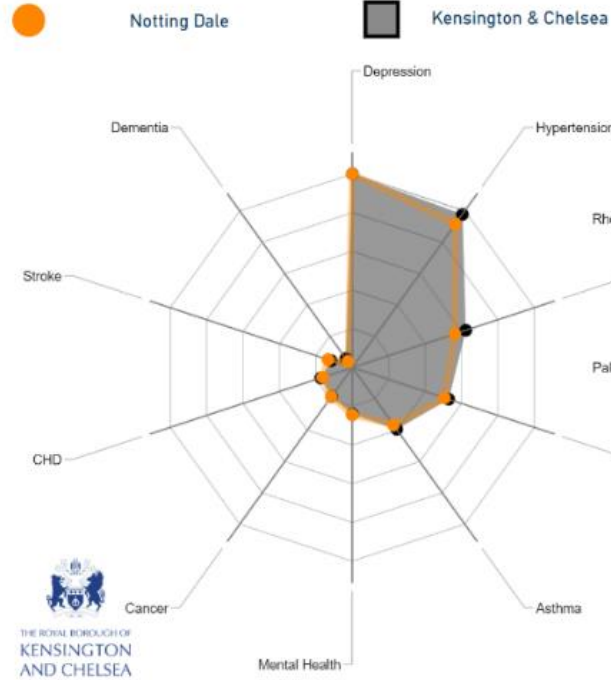
A neighbourhood with poorer health outcomes

⊕ Notting Dale has a **larger population of working age adults** than the borough's average

40.1% of residents in Notting Dale were not born in the UK

Notting Dale	Inequality	Borough average
78 (women)	Life expectancy at birth	86 (women)
74 men		84 (men)
43%	Children with a good level of development at end of reception	56%
22%	Year 6 children who are obese	19%

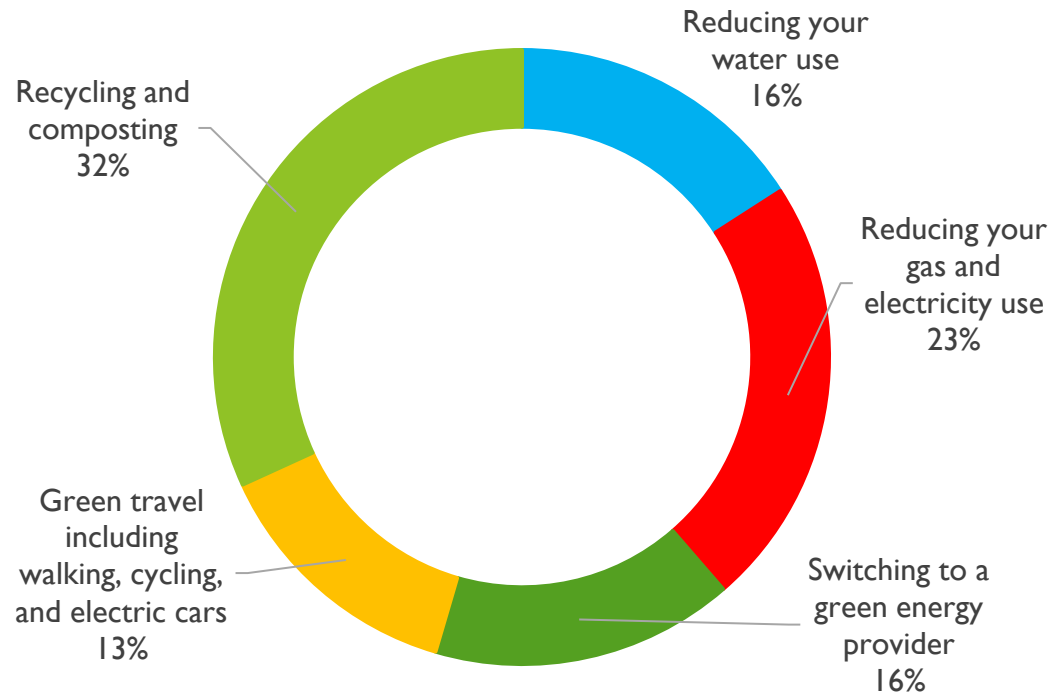
Average GP register prevalence for 2018/19



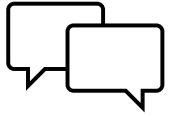
These charts show the percentage of patients recorded on practice disease registers. The tables on the right compare the ward percentage to the borough average. The percentages do not include those who are undiagnosed and the total number of patients with these conditions may be higher. For the National General Practice Profiles click this [link](#).

We have co-designed a neighbourhood sustainability strategy with residents

What activities and actions can the Lancaster West Neighbourhood Team help you to do more of?



How we will co-design and co-deliver our vision



Inclusive participation: Our future neighbourhood vision will be designed and developed **sensitively** and **collaboratively** with residents and key stakeholders (focusing on unrepresented and harder to reach groups).



Long term listening: We will **listen** to all community groups on what improvements they want to see now and in the future, ensuring initiatives have co-benefits.



Green Recovery at the heart of Grenfell recovery to ensure a just transition that tackles inequalities and builds resilient communities.



Building on a track record of co-design and engagement...

Building on the co-design of the Lancaster West Sustainability Strategy we aim to directly engage with 10% of the Notting Dale residents (854) and engage indirectly with 50% (4273)

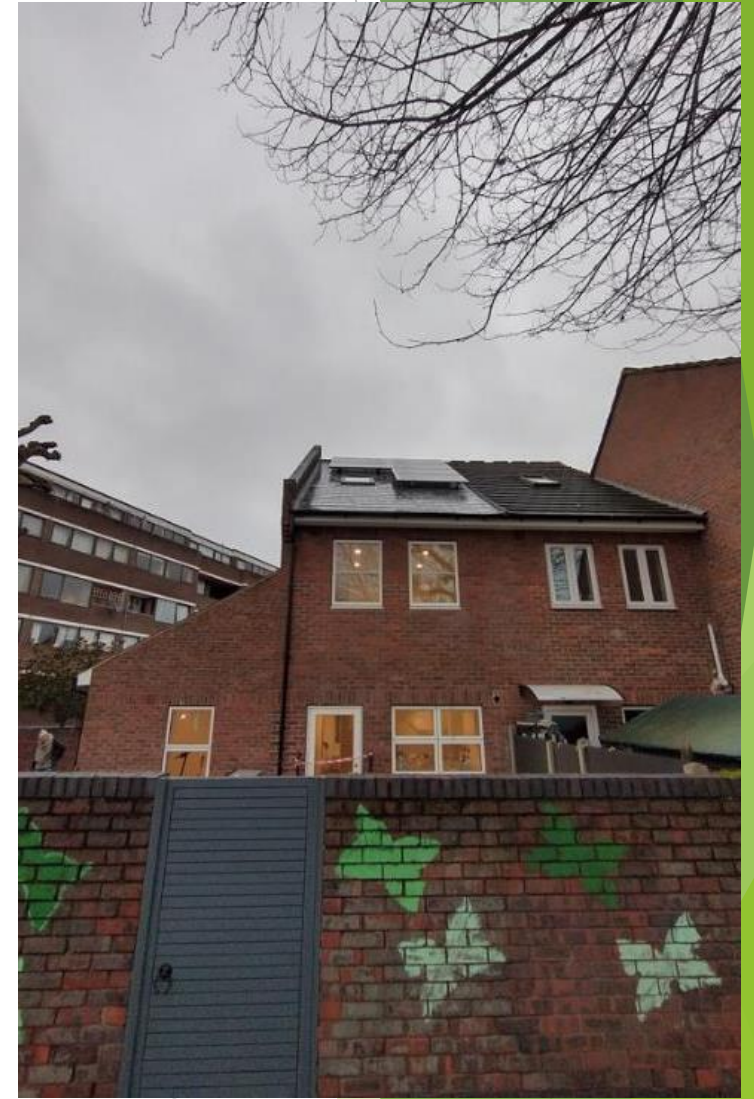


...and successful projects in the ward



Notting Dale hosts the council's first low energy home

Verity Close generates its own clean, green energy and hot water



We can build on Lancaster West's net-zero refurbishment

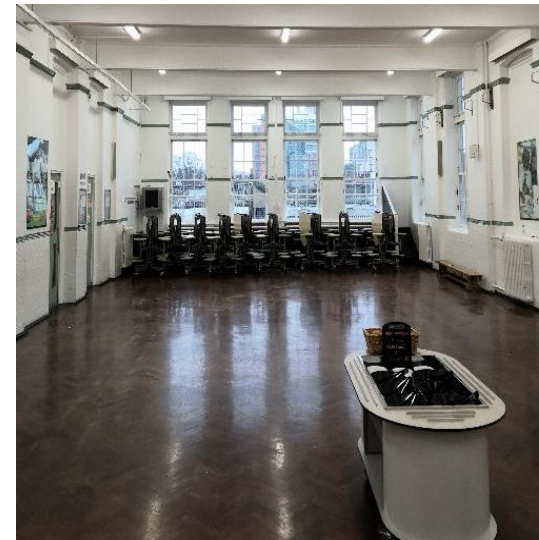
- **GLA Retrofit Accelerator** programme was used to determine feasible options, costs, and impacts of the refurbishment
- **Whole house retrofit** being delivered to every home on the estate, including both **fabric improvements** and **internal refurbishment**
- Funding secured for 3 **Social Housing Decarbonisation Fund** demonstrator projects
- Part of the **GLA consortia for Green Homes Grant Local Authority Delivery Scheme**, with funding being used to install BioSolar roofs to 3 blocks at highest risk of fuel poverty
- **Research alongside LSE** to share lessons and become a pioneer for other projects across London and the UK



Previous energy efficiency projects delivered in schools

- Childrens Parliament on the Environment and climate change assemblies delivered

Projects	Annual Carbon savings
LED energy efficient lighting systems in 18 schools since 2014	227 tonnes £61,239 financial savings per year for all the schools
Flange and valve insulation projects in 21 schools	111 tonnes
Heating health checks in 12 schools	66 tonnes



Plus many other climate change outputs

Action Plan and Inventory Development

Carbon Neutral Pathways and GHG inventories developed

Measuring and reporting environmental impacts

Improved carbon data, CHROM analysis, annual Carbon Performance Reports

Stakeholder Engagement

3 big events: Community, Big Institutions and School events
Citizens Panel on the Environment Survey
Joint work with AQ & Biodiversity colleagues: align timescale, APs development and identify synergies

Project Delivery

NKCE, Homes4Health, EV Charging Points, LEDs in schools, Solar Together, EcoFurb, Green Homes Grant, decarbonisation plans for schools etc.

New policies and strategies

Green Plan, Greening Supplementary Planning Guidance, Sustainability & Fuel Poverty, Housing Strategy, LWE Sustainability Strategy, Green Fleet Action Plan, Standards for New Homes Programme, Sustainable Procurement etc.

Governance

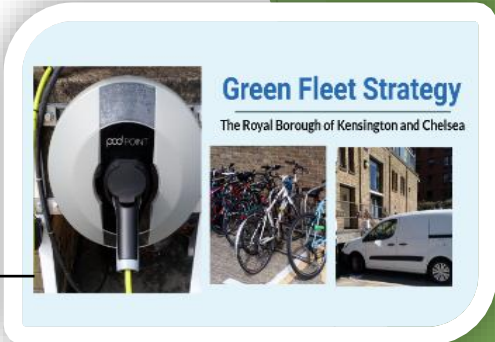
Internal: Green Strategic Board & Green Task Force, Net Zero Housing Strategic Board
External: In the process of setting up a Climate/Environment Coalition/Steering Group

Attract additional funding

Internal: Green Fund, Carbon Offset, Green Recovery, Public Health etc.
External: Public Sector Decarbonisation Fund, Green Homes Grant – LAD, GLA, WHF, 2030 Future Neighbourhoods

Green Recovery Task and Finish Group

Guide identification, design and delivery of activity aligned to the Recovery outcomes framework, and will make a tangible difference to those impacted by COVID-19



Notting Dale 2030

Future Neighbourhood

Themes

- 1. Fabric First – Notting Dale Goes Net Zero**
- 2. Powering Up for the People – Generating Clean, Green, and Local Energy**
- 3. Creating a cleaner and healthier Notting Dale**
- 4. Building a Notting Dale Nature Recovery Network**
- 5. Delivering new green jobs and skills in a circular economy**

I. Fabric First – Notting Dale Goes Net Zero

- **Buildings are the highest source of emissions** for both the council's own and borough wide emissions
- Council's **housing stock represents 57%** of the total Council's in-house emissions

Existing action already underway in Notting Dale...

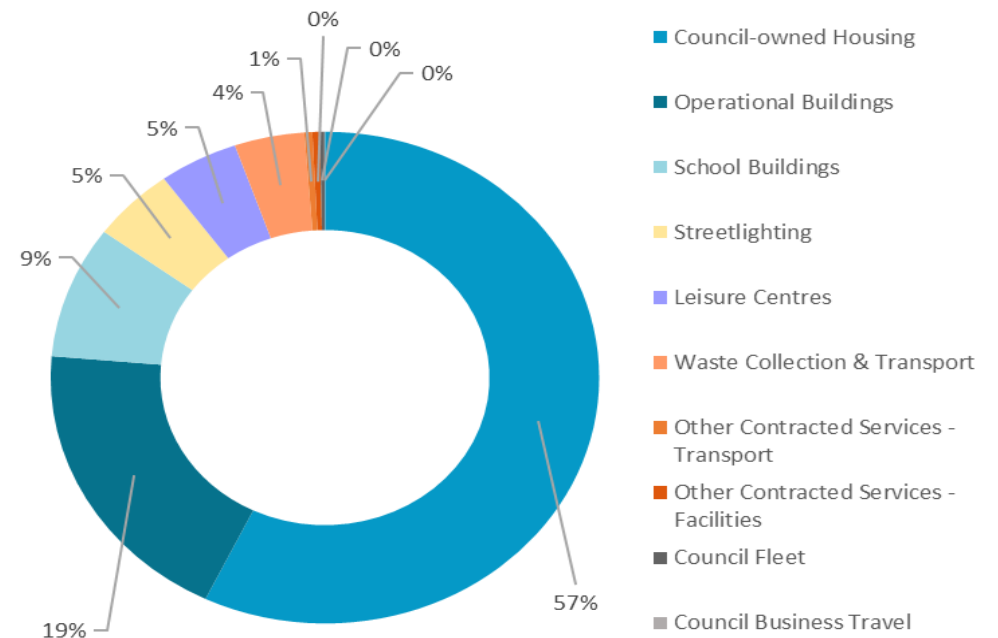
Whole-house fabric first deep retrofit

To all 795 homes on Lancaster West Estate

Fabric improvement and renewable heating systems

North Kensington Resource Centre,
Lancaster West Estate Community Centre, Baseline Business Studios

Notting Dale 2030 will support development of further projects, displayed on following slides...



Outcomes

209 homes
retrofitted

4 social housing
blocks with bio-solar
roofs

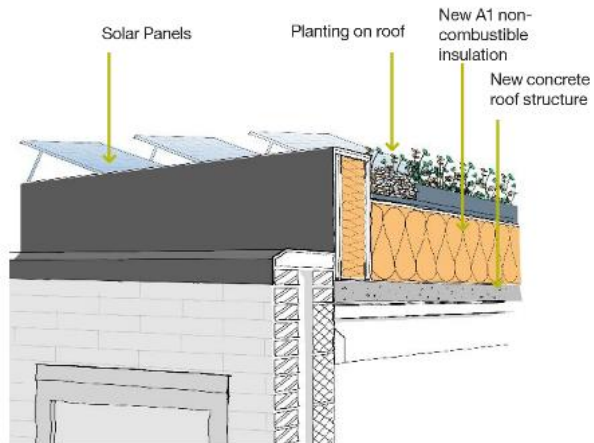
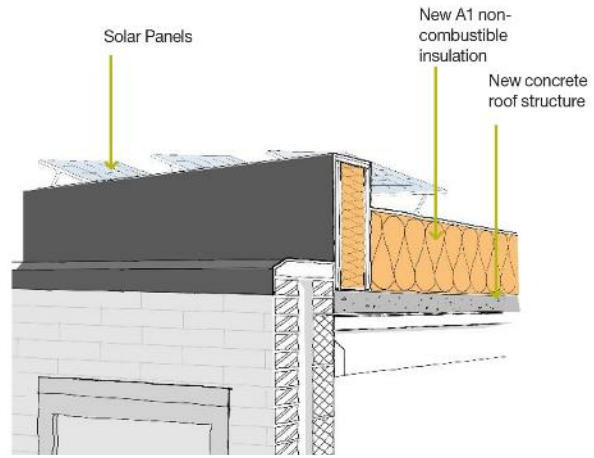
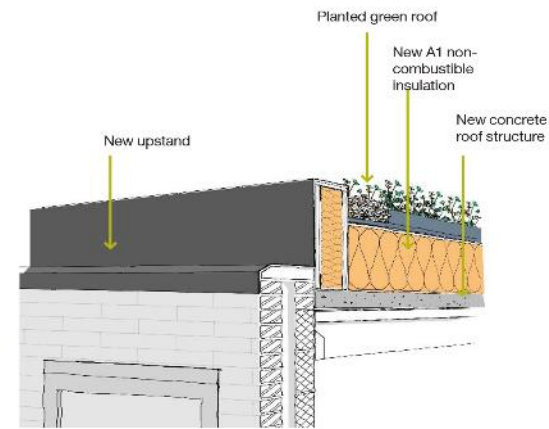
5 retrofitted and
climate adapted
schools

1
eco-community
centre in the heart
of Notting Dale



Deliver 4 Bio- Solar Roofs

Bramley House
Treadgold House
Talbot Walk
Clarendon Walk



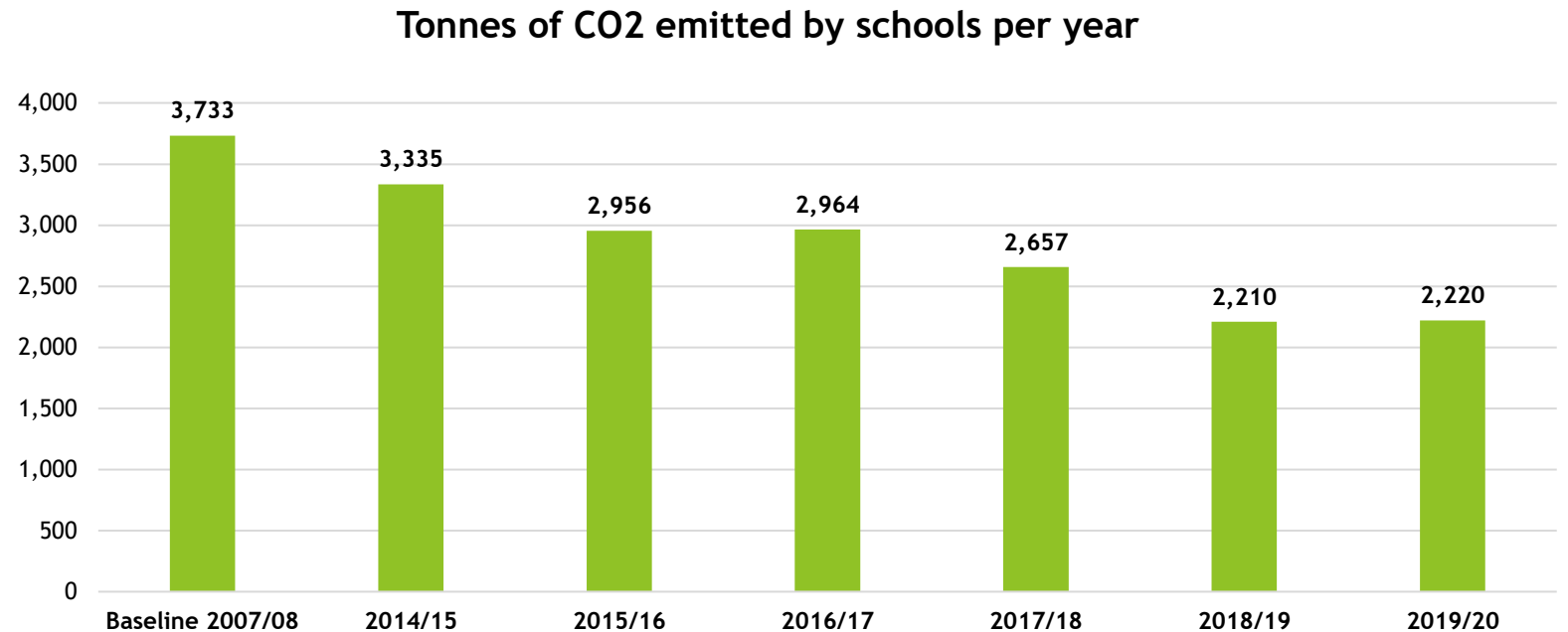
Decarbonise and climate adapt 5 local schools

Thomas Jones Primary
Avondale Park Primary
St Francis of Assisi
Colville Primary
All Saints Catholic College

- Replace 8 old gas boilers with low carbon heating systems (ASHP) and insulation works
- Climate adaptation measures and flood risk assessments
- Carry out energy surveys and develop robust decarbonisation plans

2019/20 the **33 schools** included in the Council's carbon performance scope emitted **2,220 tonnes of carbon emissions** - a reduction of 40.4% compared to the baseline year 2007/08.

The 5 schools emitted 5 tonnes.



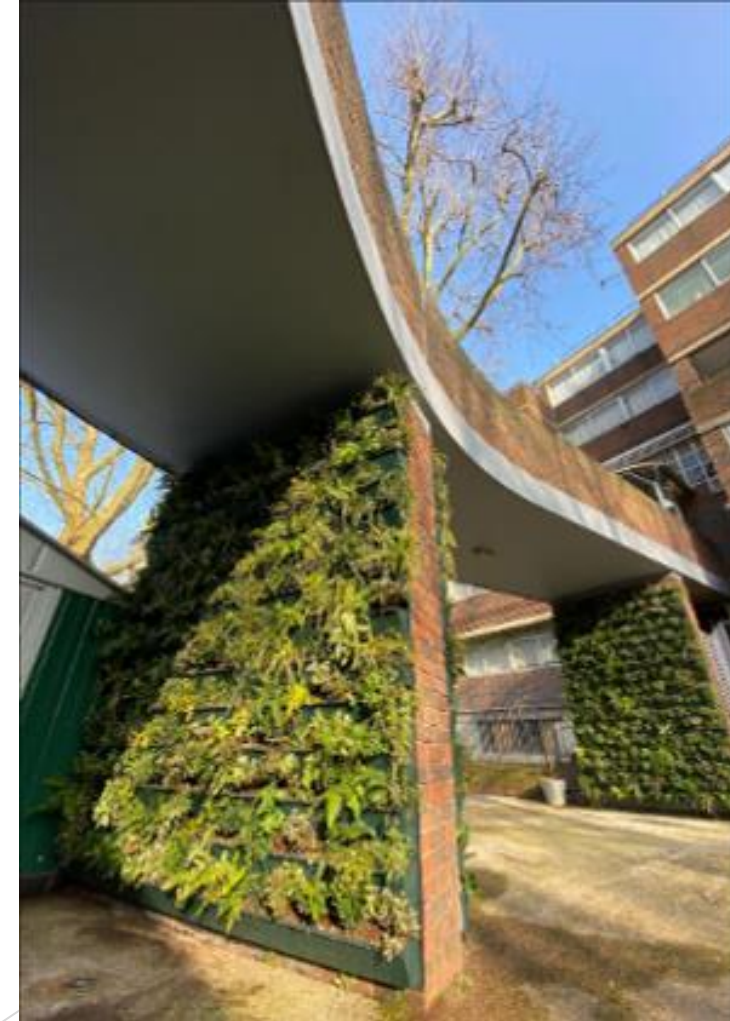
School	Gas Consumption Data 2019/20 (kWh)	CO2 emissions from gas consumption (tonnes)	Electricity Consumption Data 2019/20 (kWh)	Display Energy Certificate	Age of Building (years old)	Gross Internal Area	Carbon Emissions in 2019/20 (from gas and electricity) (tonnes)
Avondale Park Primary School	590,325	108	130,151	E	123	3842	144
Thomas Jones Primary School	63,275	3	19,789	D	46	1469	21
Colville Primary School	416,438	76	183,073	D	142	3380	126
All Saints Primary School	689,968	126	279,782	D	no info avail	5492	203
St Francis of Assisi Primary School	245,366	45	80,966	D	no info avail	1754	67

School buildings were severely affected by recent flooding

- Plant rooms and gas boilers affected
- **Inefficient gas boilers** reaching their lifetime
- Old inefficient buildings – more than **140 years old** and **average EPC D and E**
- Schools impacted by **Grenfell tragedy** and flooding
- High number of pupils on **free school meals**



North Kensington Resource Centre as an eco-community hub



2. Powering Up for the People: Generating Clean, Green Local Energy

Existing action already underway...

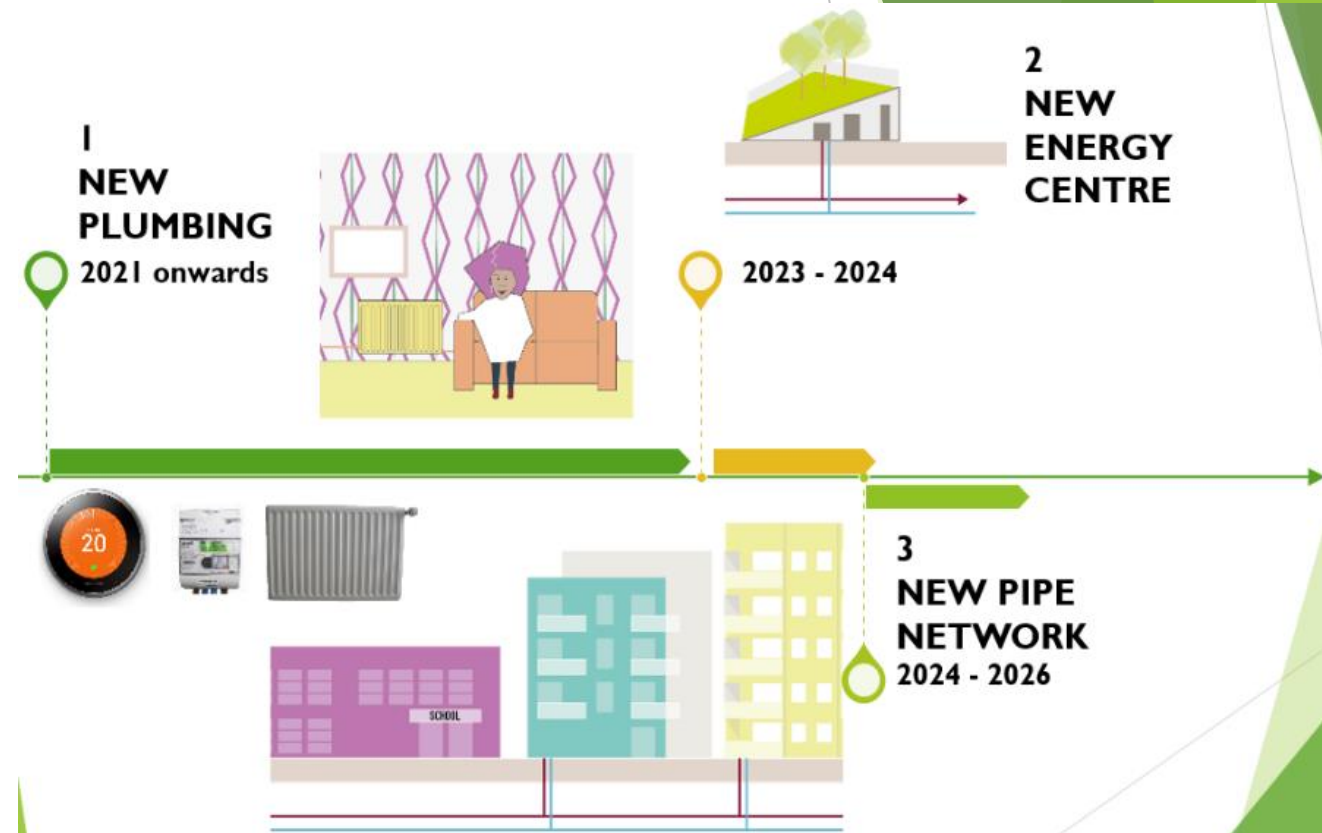
Developing the Notting Dale Heat Network

Provide low-carbon heat across the ward by 2030

North Kensington Community Energy

Delivering community-owned solar energy projects and training opportunities

Notting Dale 2030 will support development of further projects, displayed on following slides...



Outcomes

47 gas boilers
replaced with low
carbon heating
system

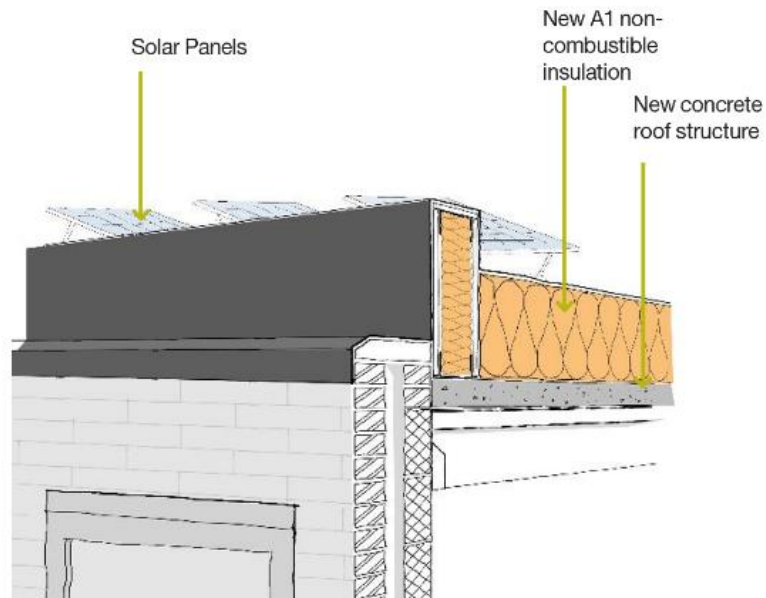
38 homes
connected to low
carbon heat network

889 tonnes
of CO₂ reduced



Deliver a Pilot Heat Network with PV Panels

Treadgold House to support the current carbon-neutral refurbishment work of the block, with an Air Source Heat Pump and PV panels



Expand the Notting Dale Heat Network

Ground and sewer source borehole monitoring for phase 2 expansion beyond the Lancaster West Estate

Could produce zero carbon heat for up to 2,000 properties.
Enables these homes to meet 2030 commitment

3 renewable sources being analysed:

- **Air source heat pump**
- **Ground source heat pump (GSHP)**
- **Sewer source heat pump**

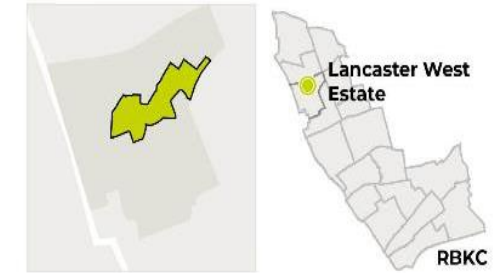
Desktop study and technoeconomic model has confirmed GSHPs are technically feasible.

This funding would monitor 2 boreholes to investigate viability of GSHPs

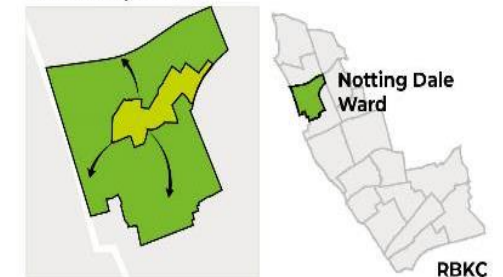
Phase I Core Scheme: Lancaster West Estate



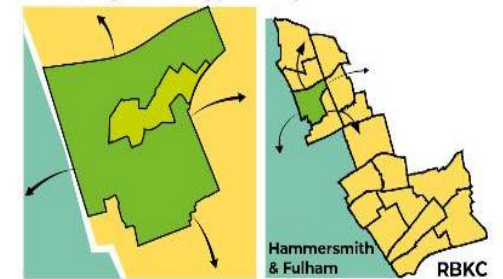
Phase I Core Scheme



Phase 2 Expansion



Future Expansion Opportunity



Building support for a green heat network

200+
residents
actively
engaged



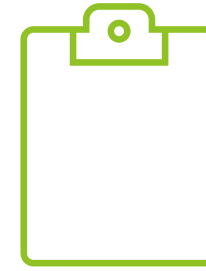
174 comments

93 surveys

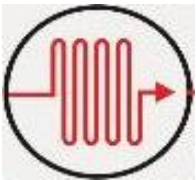
+ 81 individual comments

Via

- 5 Web Meetings
- 3 Pop-ups
- 3 Focus Groups
- Block Rep Meetings
- LWRA Meeting
- 2 Surveys
- Interviews
- Instagram



Comment Themes



Technology

23%



Billing

21%



Delivery

19%



**Home
Impact**

12%

Cost

9%

Other

7%

2% 2%

Gas

Health

Pop-up energy café at North Kensington Resource Centre

with green utility clinics, fuel poverty and energy advice and partnership with local NHS providers to support residents



Struggling with your energy bills?



We can help

Your local energy experts - the Green Doctors - are offering phone consultations to help you save money and stay out of debt.

This consultation is provided by a registered charity for anyone on a low income or over 65 or with a long term health condition or disability.

Your Green Doctor will help you

- Save money on your energy bills
- Switch energy providers to save you money
- Access the Warm Homes Discounts
- Apply for grants for energy or water debt
- Get additional support

Book a phone consultation or refer someone else!



0300 365 5003



[green-doctors-london.org](https://www.green-doctors.org)

There is no charge for this service
Even your phone call is free!



Green Doctors are part of Groundwork London, a registered charity No. 1121105



North Kensington Community Energy

Develop the first community owned solar project on a low-rise medium density Council owned social housing estate as part of North Kensington Community Energy Repowering using a new post Feed in Tariff model

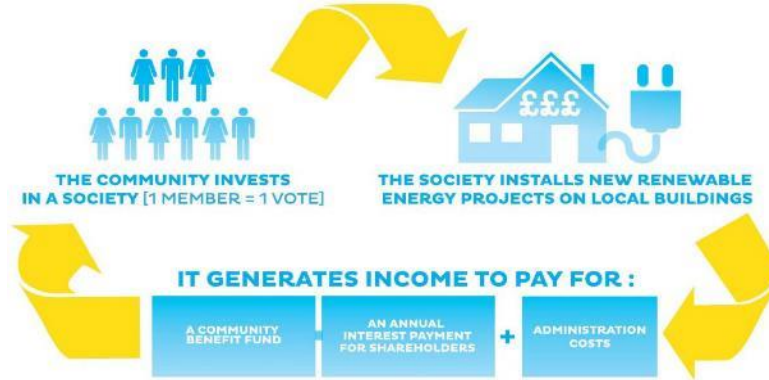


THE ROYAL BOROUGH OF
KENSINGTON
AND CHELSEA



**NORTH KENSINGTON
COMMUNITY ENERGY**

Building community and tackling climate change
in Kensington and Chelsea



1 Strategic vision

Creating local energy

2 Strategic mission

To create resilient, empowered communities across London with greater control and ownership of their energy generation and usage

3 Strategic goals

Building Decarbonisation	Local leadership	Training & employment	Reduce fuel poverty	Social investment
Reduce demand and generate decentralised renewable energy	Promote local leadership through mentoring and community ownership	Provide training and employment opportunities for local people	Tackle fuel poverty through energy efficiency measures and supporting behavioural change	Provide opportunities for local and socially responsible investment



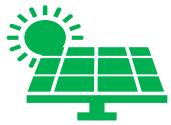
Our Impact To-Date

North Kensington Community Energy



£189,000

Shares and debt invested into the community



224 kW

of installed rooftop solar capacity



46 tonnes

of CO₂ emissions avoided each year



16 young people

trained and received paid work experience



£70,000

Community Fund raised for the local area



SUPPORTED BY

MAYOR OF LONDON



**Esmée
Fairbairn**
FOUNDATION

blowUPmedia



3. Creating a Cleaner and Healthier Notting Dale

Existing action already underway...

Public Health Project in Notting Dale and Dalgarno ward

To mobilise community to co-create and implement local initiatives to eat well, move more and feel good based on local need

Food waste pilot

For 350 homes and hot bin composters on LWE

Notting Dale 2030 will support development of further projects, displayed on following slides...



Outcomes

20% increase
in journeys taken by
foot or bike

45 new electric
vehicle charge points

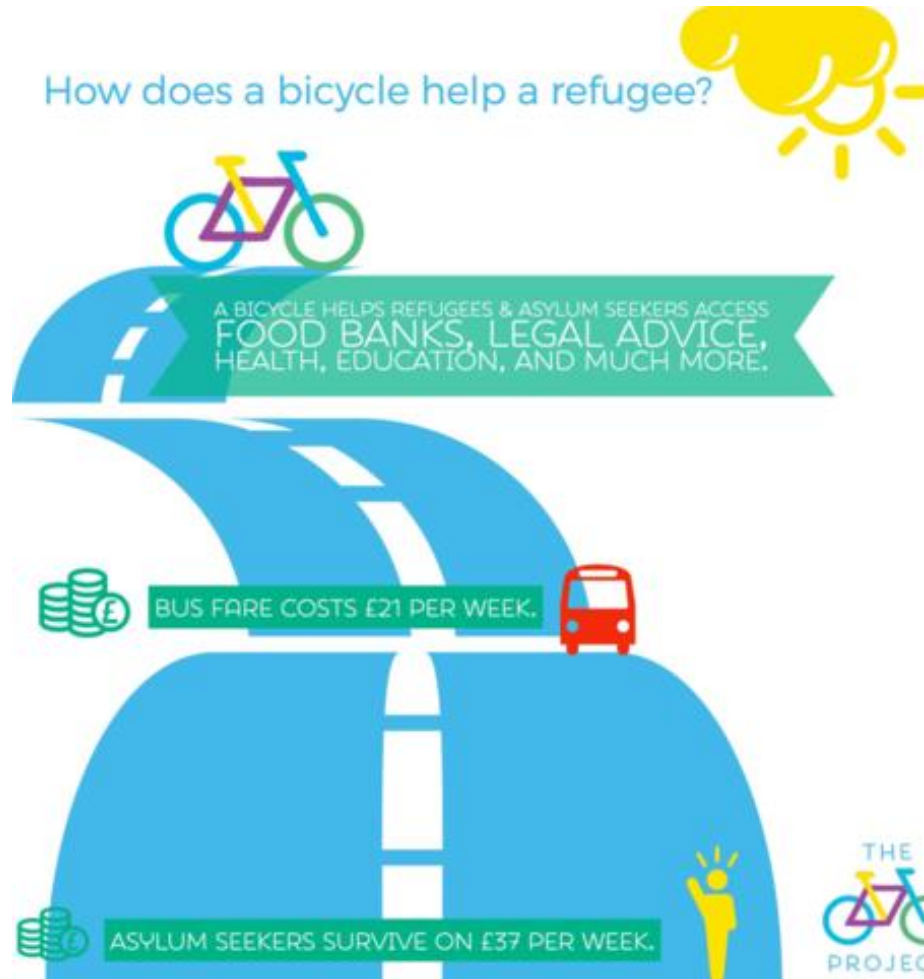
10% reduction in
vehicle count at peak times

2000
residents with
reduced exposure to air
pollution



Bike Buddying Scheme

For migrants and refugees



Bike Surgeries

Aimed at BAME residents including bike storage, social cycling confidence training, and subsidised access to bikes and helmets



Installing Electric Vehicle Charging Points and Cycling

in every estate car park



Embed climate change into the school curriculums

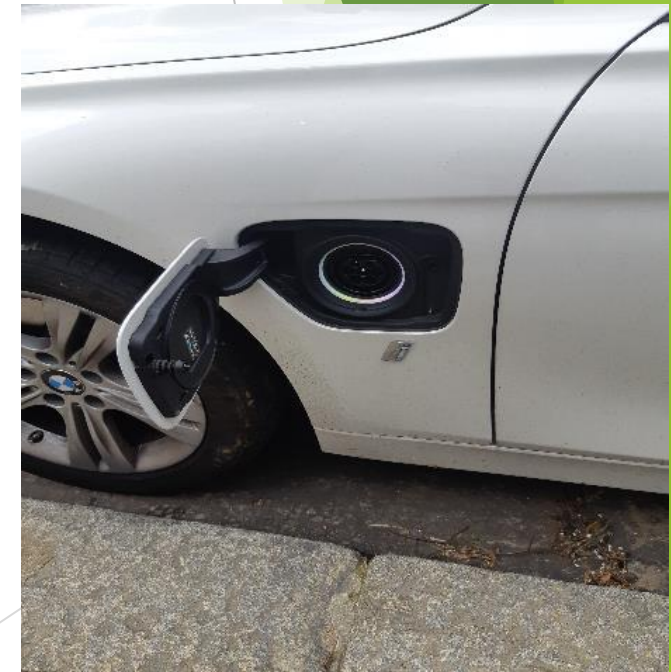


Eco driving training

Deliver eco driving training to **SME's**, residents, community groups and voluntary associations.

- ✓ Improves fuel efficiency of vehicles
- ✓ Decreases carbon emissions and air pollutants

Drivers who undertake this training can improve their miles per gallon (MPG) by 15% and reduce their fuel costs. For EV users the training can help drivers increase their battery range by 20%.



Subsidised car washing for electric vehicles

Using filtered rain water at 2 local SME car washes



E-Cargo Bike Pilot for Grounds of Arabica

Support an SME that makes fresh middle-eastern food, much of which is vegan



Consolidating freight and delivery

via consolidation centres or business incentive schemes pilot in Notting Dale

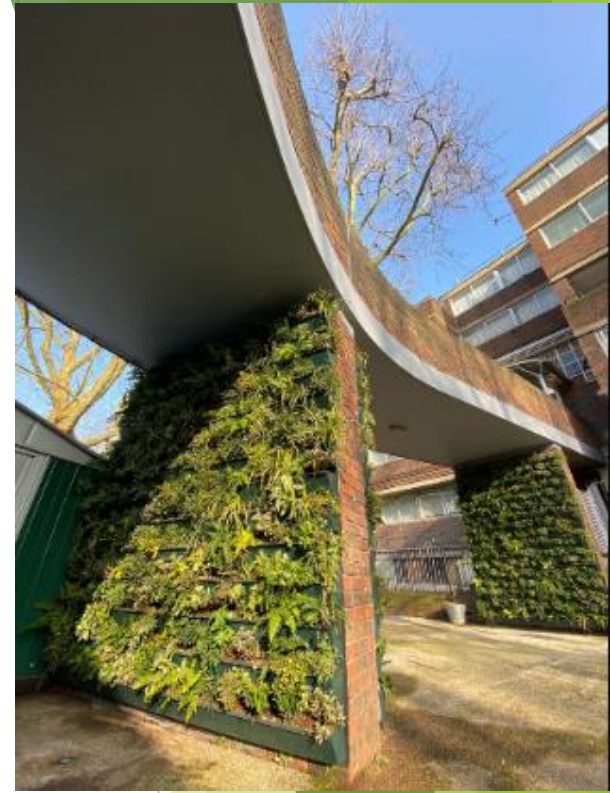


Air quality measures installed

At 4 schools based on audits (installing four sensors with data management as part of monitoring; green infrastructure (planters, green walls etc.); schools streets, filtered permeability structures and measures; travel plans, anti-idling and behaviour change campaigns

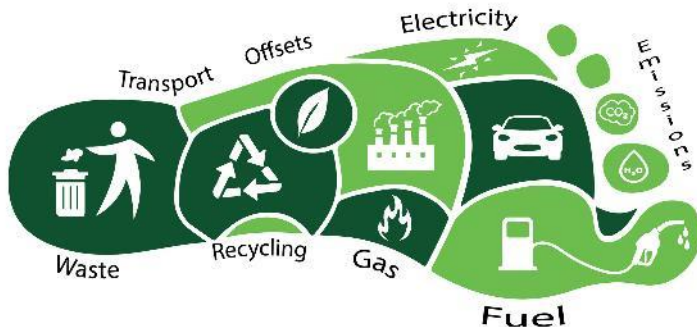
**SWITCH IT OFF
SO WE DON'T COUGH!**

Leaving an engine running whilst idle results in up to **10 times more** contaminants inside the vehicle than outside the vehicle.



Stage 2 of Neighbourhood Project in Notting Dale

Expand from a health campaign/initiative to include...



Expanding food waste collection

Expand across Lancaster West Estate, Henry Dickens, Allom, Barlow and Bramley House

Food waste



- dairy, eggs and bread
- meat, bones and fish
- tea bags and coffee grounds
- fruit and vegetables
- rice, pasta and beans



- packaging
- plastic
- liquids, such as milk
- oil and liquid fat
- garden waste
- any other material that is not food!

Using your food collection service

1. Line your kitchen caddy with one of the special liners* provided by us and put your food waste in it.



2. Whenever you need to empty your kitchen caddy, tie the top of the liner and put it in your outside food waste bin.



4. Building a Notting Dale Nature Recovery Network

Existing action already underway...

Community Kitchen Gardens and Street Greening

Across the borough with an active gardening volunteer network



Westway Trust Community Street Project

Working with local universities to research into air quality improvement projects and delivering green space projects



Bee Super-Highway

Being developed across the borough to enhance habitat for pollinators and engage people in local urban wildlife

Notting Dale 2030 will support development of further projects, displayed on following slides...



Outcomes

700m² of
priority habitat
created

50%
increase
in community from
underrepresented/adv
ersely affected groups
using green space for
recreation

300m²
increase in
areas draining to sustainable
drainage systems



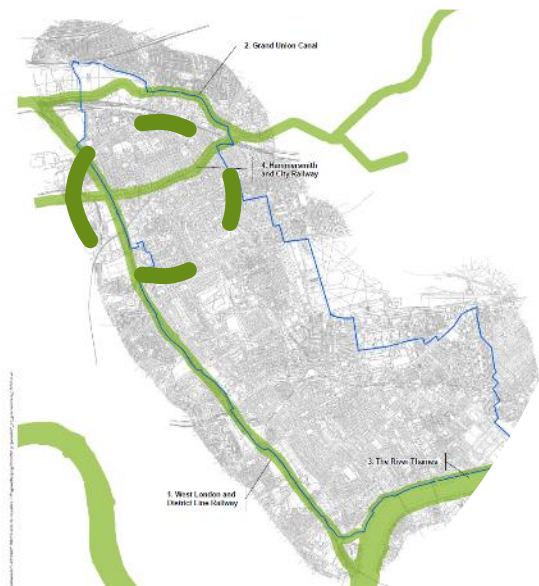
Energy Garden Tube Station Greening

Ladbroke Grove
Latimer Road



Local Nature Recovery Network Mapping

Surveying and promotional campaigns



A map displaying existing natural green corridors across the borough



BSG | ecology

OFFICE: Oxford
T: 01865 883833

JOB REF: 7427.00

PROJECT TITLE
ROYAL BOROUGH OF KENSINGTON AND CHELSEA
HABITAT SURVEY

DRAWING TITLE
Figure 9.3: Areas of Deficiency

DATE: 30.03.2015

CHECKED: LG

SCALE: 1:25,000

DRAWN: COH

APPROVED: LG

STATUS: FINAL

LEGEND

- Borough boundary
- Site of Importance for Nature Conservation (SINC)
- Undesignated site
- Areas of Deficiency in Access to Public Open Space (Local / Small / Pocket)
- Areas of Deficiency in Access to Nature

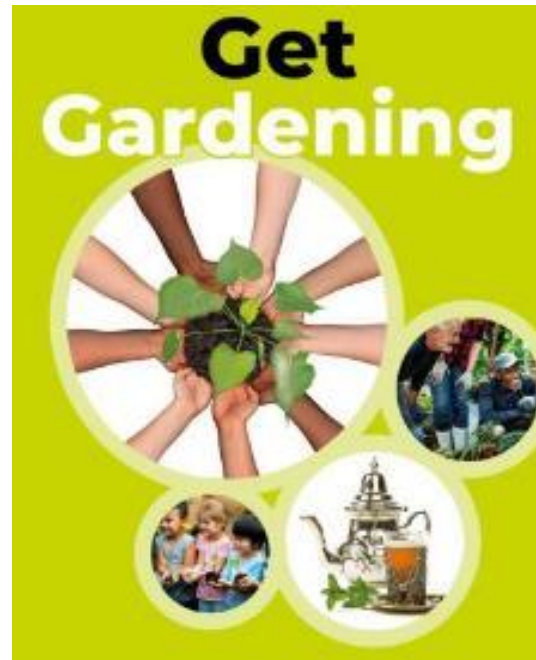
Areas of Deficiency in Access to Public Open Space at District, Metropolitan, and Regional scales have not been mapped.

Copyright © BSG Ecology

No dimensions are to be scaled from this drawing. All dimensions are to be checked on site. Area measurements for indicative purposes only. This drawing may contain Ordnance Survey material by permission of Ordnance Survey on behalf of the Controller of Her Majesty's Stationery Office © Crown Copyright 2015. All rights reserved. Reference number: 10048980. OS Open data © Crown copyright and database right 2015 | Aerial Photography © Esri | Sources: BSG Ecology survey data; OS Mastermap provided by Royal Borough of Kensington and Chelsea

Verity Close Nature Garden

Community led SUDs and sensory planting



Avondale Park Environmental Improvements and Volunteering Programme

20 days of volunteering (subcontracted) engaging the local community in habitat enhancement activities, installation of green roofs (60m²), employment of local apprentice



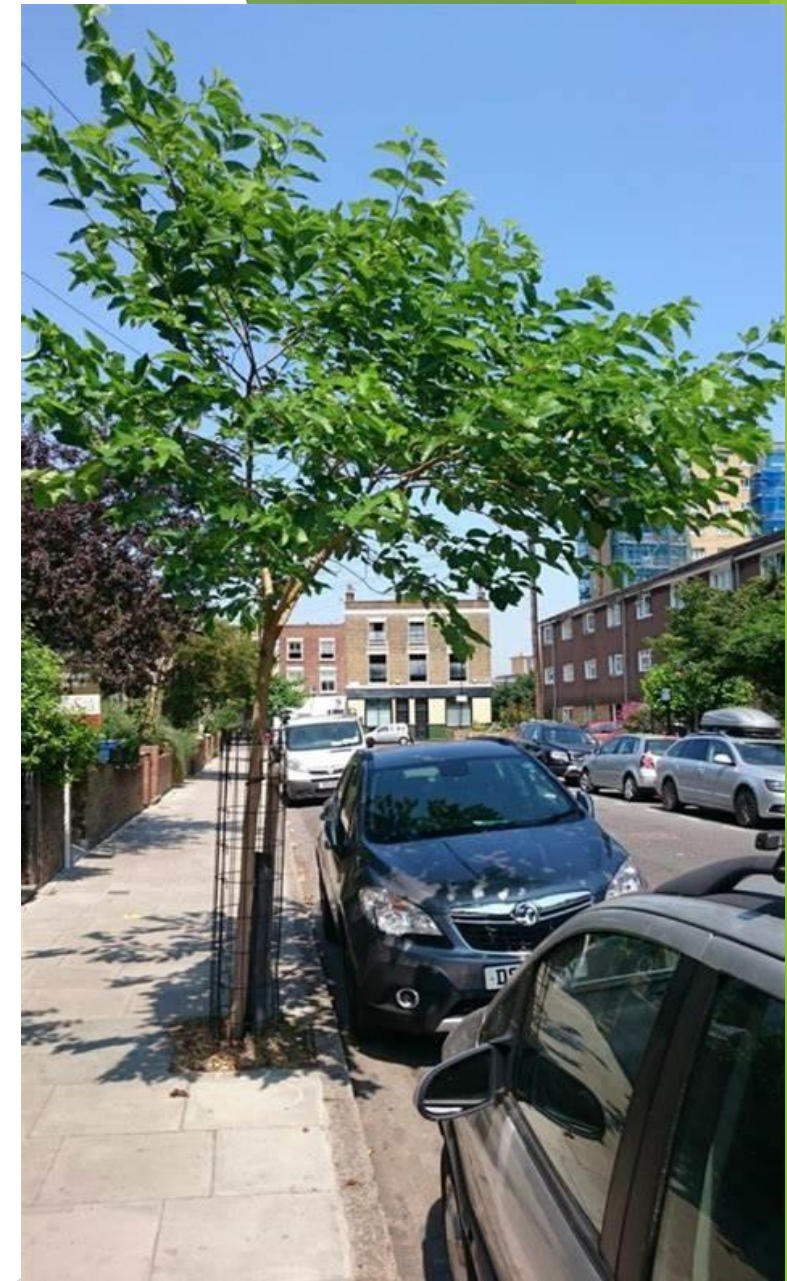
Community Kitchen Garden Creation

on all social housing estates



New Street Planting and Cover

Up to 34 trees planted on ward streets



Workshops and training opportunities around ecology, nature and wellbeing



New Community Greening Projects

With Westway Trust and Latymer Church



Treadgold House

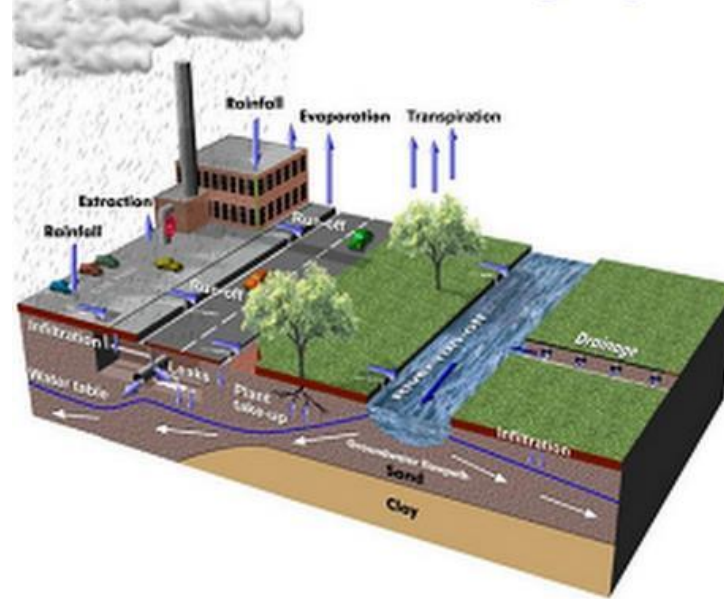
SUDS, water harvesting, and rain garden



Lower Clarendon Walk and St Marks Leaver Centre

SUDs

Sustainable Urban Drainage Systems



5. Delivering New Green Jobs and Skills in a Circular Economy

Existing action already underway...

Partnering with contractors

RBKC working in partnership with contractors to create green jobs and apprenticeships and to green the supply chain

Sustainability learning and training opportunities

For all residents, colleagues and contractors. Includes energy testing as well as a series of webinars.

Paid training opportunities

Through NKCE for young people and NKCE community champion role created (starting summer 2021)

Notting Dale 2030 will support development of further projects, displayed on following slides...



Outcomes

100 green jobs
created

5 Circular Economy
workshops held

130 Green Skills
Qualifications attained



New Library of Things and Associated Re-Use Workshops

North Kensington Library

How borrowing works



Join and reserve

Browse the Things online and make a reservation to borrow.



Borrow and return it

Collect your Thing. Use it. Then return it when you're done.



Track your impact

See how much waste you've saved from landfill by borrowing instead of buying.



Notting Dale Green Business Network

Waste reduction and single use plastics phase out support to local businesses



Pop-up repairs shop at eco-community hub

North Kensington Resource Centre



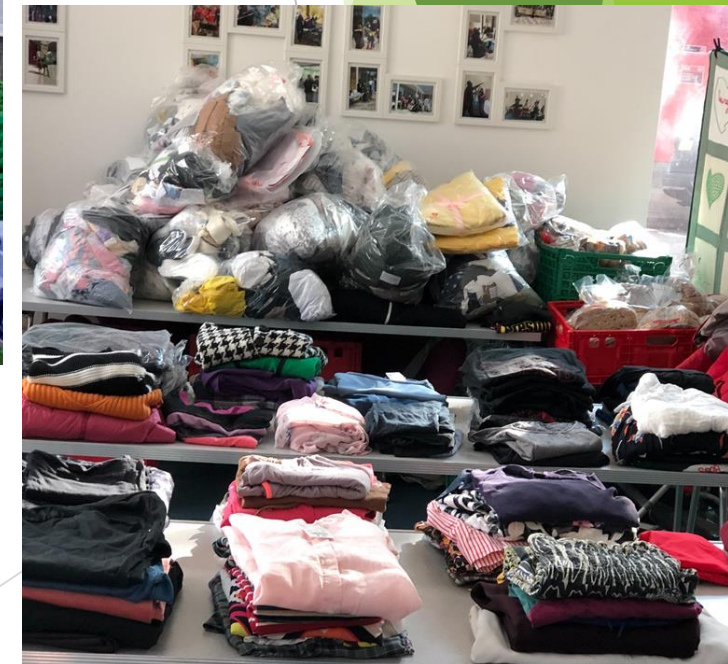
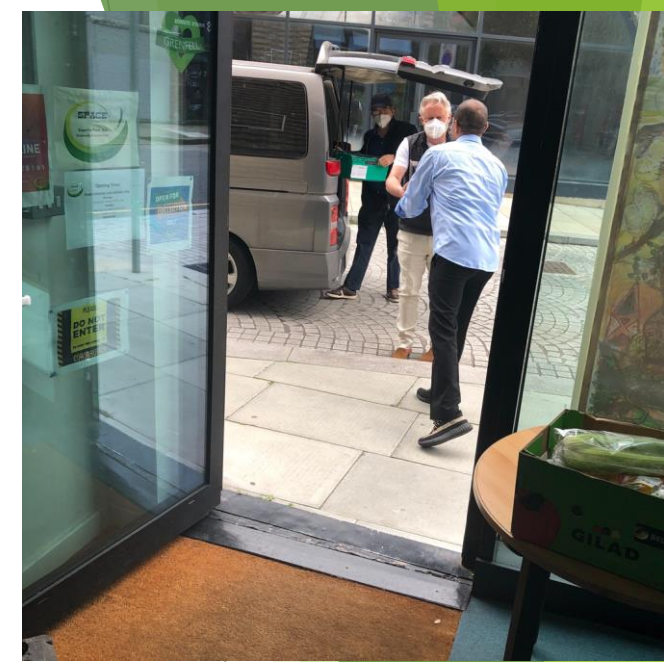
Zero Plastic Pilot

Offices and Schools



Supporting SPACE to scale up their offer

Including a school uniform swapping service



Training opportunities and workshops

For residents to save waste and money/circular economy

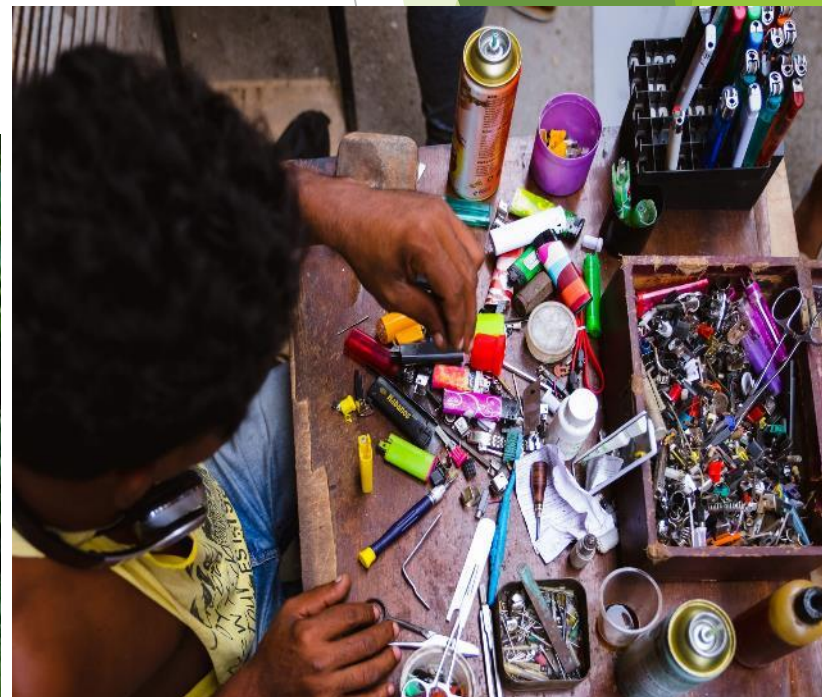
Energy saving and advisor training for residents as part of the fuel poverty programmes



Action for Warm Homes

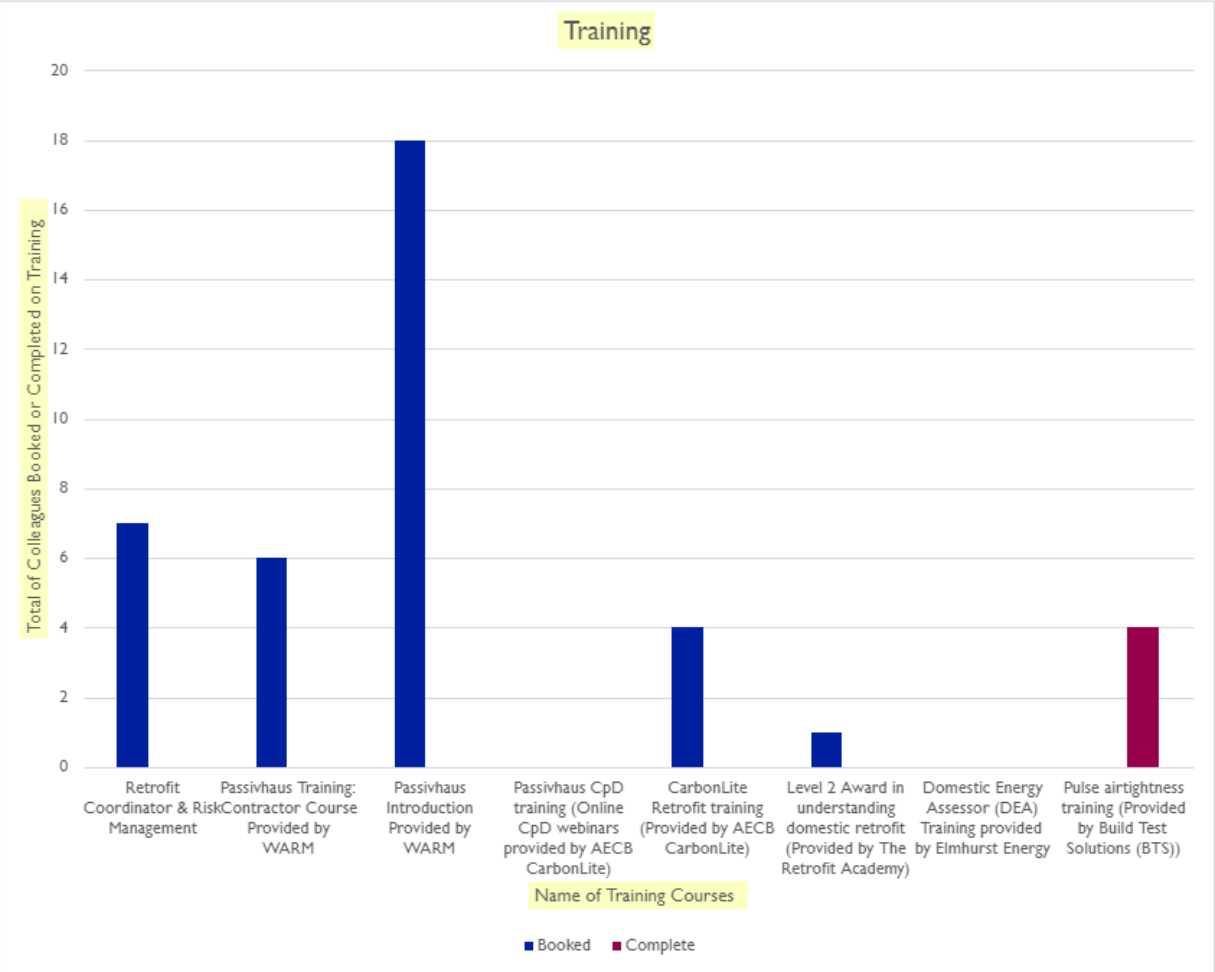


Organise 3 Greener Living Events



Green Skills Academy

Focussing on retrofitting and energy, preparing residents for up to 100 green jobs in the ward over the 3 years



Lancaster West Estate Data of Training Attendees (09/21)



Youth Training Programme

40 hrs paid AQA training course for 16-19 year olds

Support between 15 and 30 trainees and unemployed adults to gain qualifications/certificates in green skills and manage work placements with partner organisations through the delivery programme



THE PROGRAMME

Sessions will be held at convenient times and locations to be confirmed with the trainees. These are usually one evening per week, some Saturdays and some days during the half-term or holiday breaks. The programme will normally run over 1-2 months.



PHASE 1

ENERGY STUDIES (PART 1)

- The energy system and how it works
- Renewable technologies
- Solar panel making



PHASE 2

BUSINESS STUDIES

- Money systems and local currency
- Community business models
- Financial modelling & solar feasibility



PHASE 3

COMMUNITY ENGAGEMENT

- Community engagement
- Door knocking
- Survey analysis



PHASE 4

COMMUNICATIONS

- Promotional materials
- Social media
- Advocacy



PHASE 5

ENERGY STUDIES (PART 2)

- Energy Efficiency Training
- Fuel Poverty
- Home Energy Audits



PHASE 6

WORK EXPERIENCE

- Work experience placement in a sector relevant to the trainee
- Can include experience installing solar equipment



PHASE 7

CAREER & FURTHER DEVELOPMENT

- Support into further opportunities
- Interview skills and CV support
- Links with other organisations



Notting Dale 2030 job opportunities

Notting Dale 2030 resourcing

1x Notting Dale 2030 Project Manager

1x Avondale Park IdVerde Apprentice

1 x WestWay Trust 0.5 FTE member of staff

+ 500 hours of officer time and in-kind support
