



Exploring Lancaster West

Lancaster West Future Neighbourhood Vision – Opportunities Report

Mar 2022





Contents

1 Introduction

- 1.1 Introduction
- 1.2 Purpose of this report
- 1.3 Methodology and timeline overview

2 Exploring Lancaster West

- 2.1 Potential pilot projects for Lancaster West
- 2.2 Community engagement
- 2.3 Opportunities map
- 2.4 Opportunities matrix

3 Appendices

- A - Project Summaries
- Education and Economic Development
- Health and Wellbeing
- Sustainability and a Greener Estate
- Connected Communities



Lancaster West Estate
Tea Garden
W11

Introduction

- 1.1 Introduction
- 1.2 Purpose of this report
- 1.3 Methodology and timeline overview



Introduction

The Lancaster West Future Neighbourhood Vision will define priorities and potential ways forward for future services, programmes and spaces in and around the Lancaster West Estate.

The Lancaster West Neighbourhood Team (LWNT) has secured funding from the One Public Estate (OPE) programme to help deliver a Future Neighbourhood Vision for the Lancaster West Estate.

This vision is focussed on four main areas: **Education and Economic Development, Health and Wellbeing, Sustainability and a Greener Estate and Connected Communities.**

The vision will build and expand on the initiatives and programmes that are already taking place in these four areas and will be co-designed with residents who will play a key part in shaping the future of their neighbourhood.

The Neighbourhood Vision aims to:

- Join up services in the area based on a thorough understanding of needs and desires of residents;
- Bring a holistic approach to coordinating investment, new homes at social rent, and improving the public realm in the area;
- Improve visioning around transport, connectivity and accessibility across the area;
- Help establish a framework of ongoing health interventions in partnership with the NHS;
- Place a green recovery at the heart of Grenfell recovery.

Purpose of this report

The purpose of this report is to detail potential opportunities that have been explored on the Lancaster West Estate and wider area during the explore stage.

The Understand Stage, as documented in the Baseline Report, and Inspire Stage, as documented in the Playbook of Ideas, were used to identify, test and explore potential pilot projects with stakeholders and residents. These potential pilot projects were then more deeply analysed in this Explore Stage, with the details of those investigations and discussions captured in two distinct but interconnected outputs:

- Opportunities Map
- Opportunities Matrix

These outputs, detailed in this report, will serve as useful tools for the community and stakeholders to plan and prioritise projects for the Lancaster West Estate and surrounding area.



Methodology and timeline **overview**

The process of developing this vision is broken down into five phases of working with residents. This report is the outcome of activities and engagements that took place during the Explore phase.

EMPOWER

Establishing and empowering a group of residents to develop new skills in community engagement, communication and as advocates of the vision, supporting co-design throughout the process.

UNDERSTAND

Building a picture of the current context in Lancaster West Estate and broader neighbourhood through understanding the needs and aspirations of residents, while mapping the current services offered.

INSPIRE

Creating a playbook of potential solutions and opportunities to address identified gaps, drawing inspiration from best practice around the world.

EXPLORE

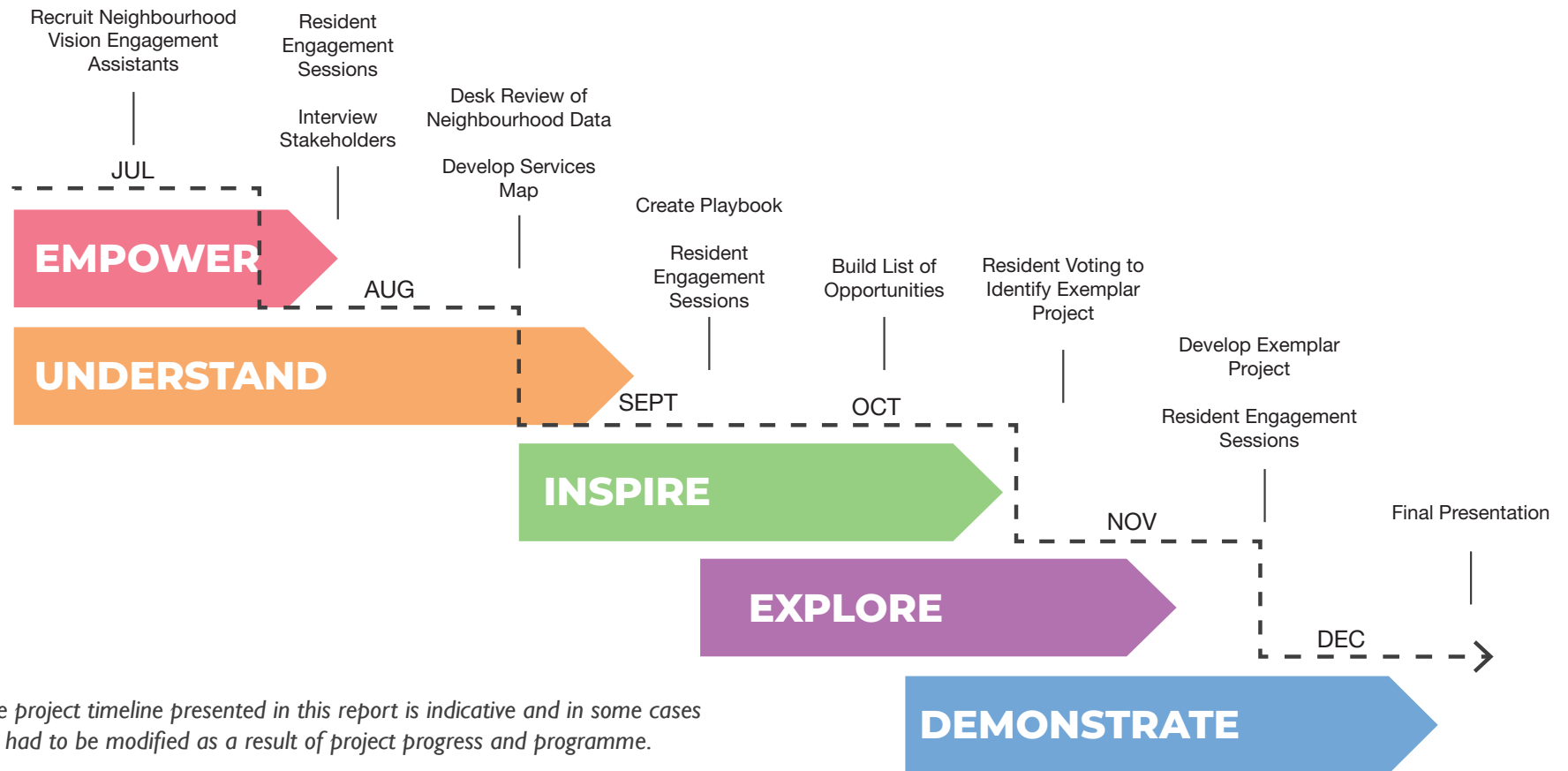
Building a list of opportunities, activities and service improvements specific to Lancaster West Estate and broader area drawing from an understanding of needs, options and inspiration.

DEMONSTRATE

Co-designing one exemplar project with the community and stakeholders to demonstrate the value of the vision, and set the tone for further delivery.

Methodology and timeline overview

Feedback from residents and stakeholders has been used to inform the outcomes of this stage. A summary of the key engagement activities and project milestones leading up to the Explore phase has been mapped in the diagram below:

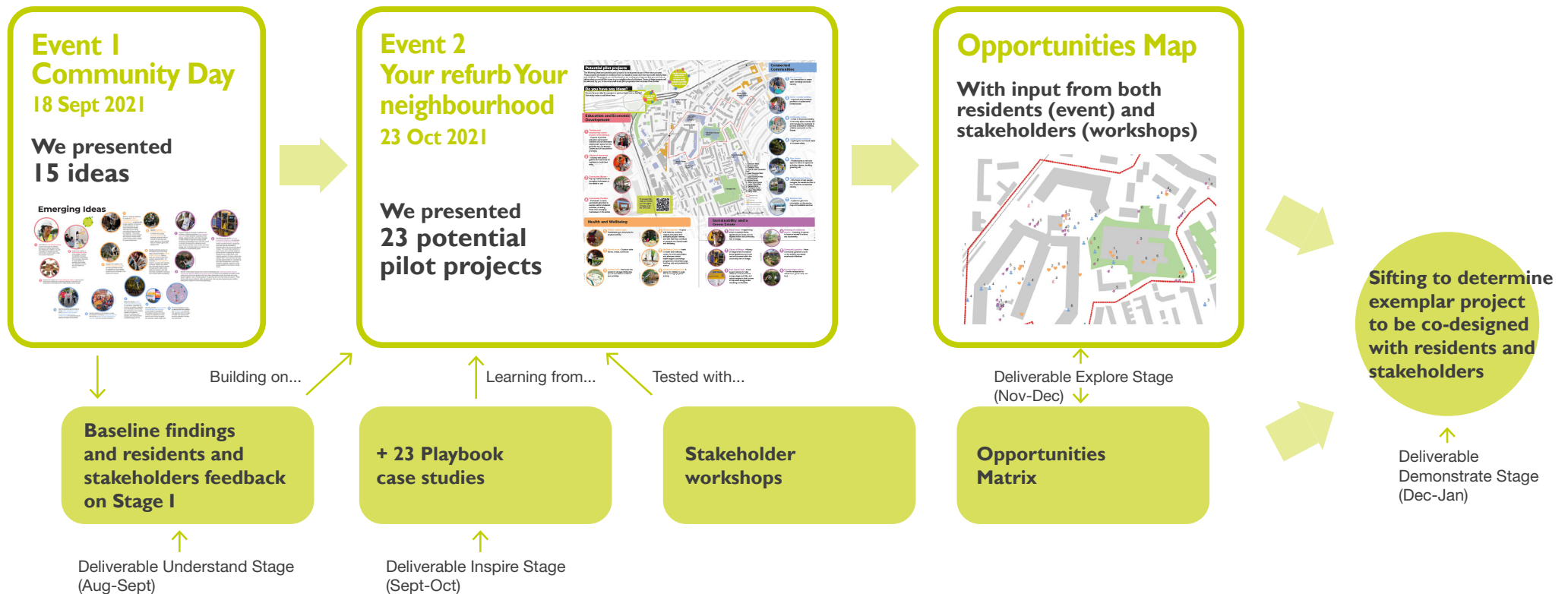


Please note that the project timeline presented in this report is indicative and in some cases activities and dates had to be modified as a result of project progress and programme.

Methodology and timeline overview

The process for developing this shortlist of potential pilot projects has been captured in the figure below which illustrates key activities and outputs. This process was carried through three key phases, each building and refining the last:

- Understand Stage – where we presented 15 ideas which were proposed from analysis of data from residents, stakeholders and secondary sources.
- Inspire Stage – where we presented 23 potential pilot projects that responded to the feedback received on those initial 15 ideas.
- Explore Stage – where we got feedback on those 23 potential pilot projects from residents and stakeholders, including opportunities, limitations and potential locations.



Exploring Lancaster West

- 2.1 Potential pilot projects for Lancaster West
- 2.2 Community engagement
- 2.3 Opportunities map
- 2.4 Opportunities matrix
- 2.5 Prioritisation sifting

2.



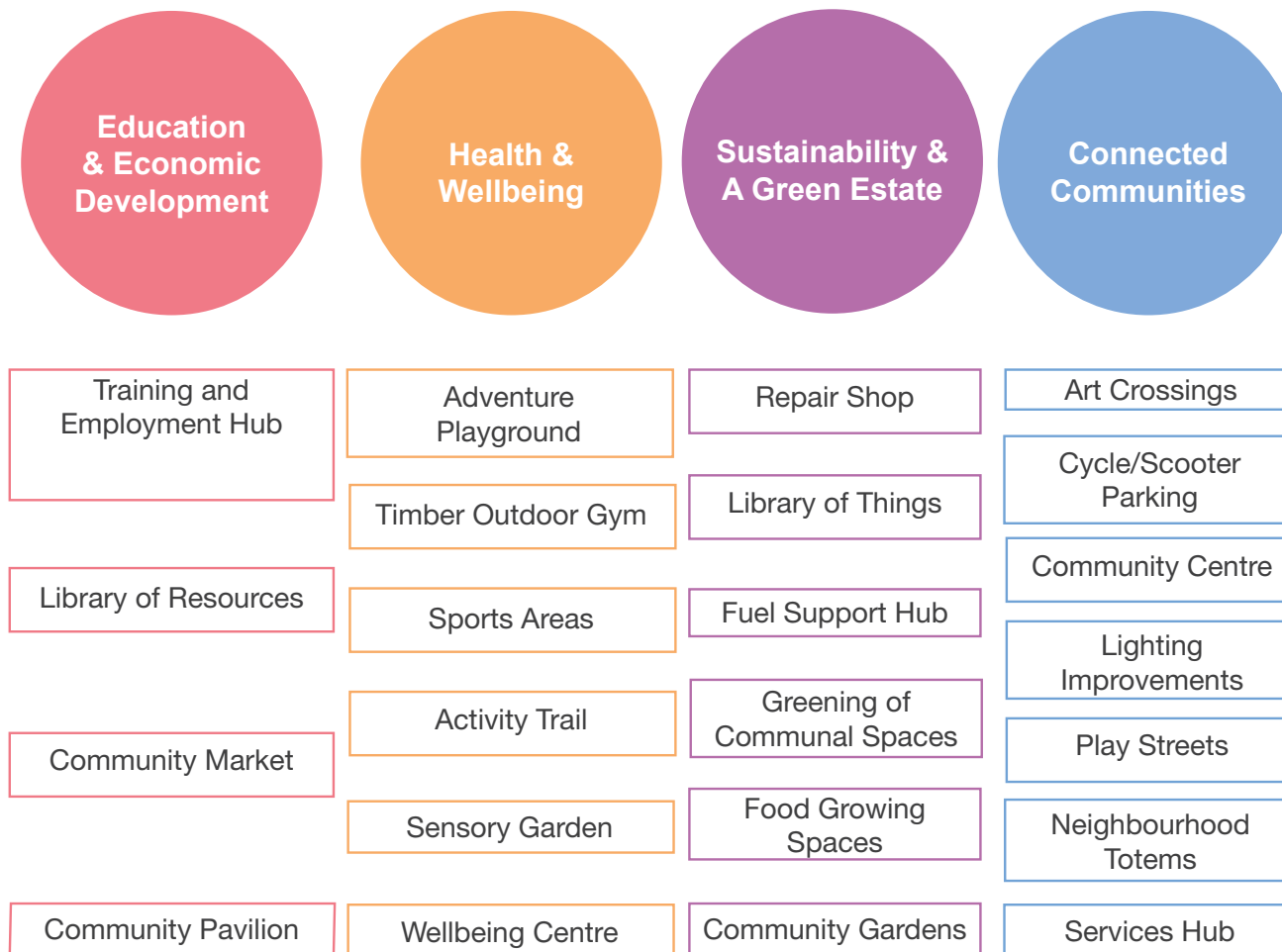
2.1 Potential pilot projects for Lancaster West

The following section provides details on the potential pilot projects that were presented to residents and stakeholders during the Explore Stage.

The potential pilot projects were identified during the Understand and Inspire Stages with stakeholders and residents as documented in the Baseline Report and Playbook of Ideas. These potential pilot projects were then more deeply analysed in this Explore Stage, with the details of those investigations outlined in this report.

These potential pilot projects are not meant to be seen as a fixed list of fully formed and designed deliverables, but rather a long list of potential opportunities that can be prioritised and further explored with residents and stakeholders.

For full information on each project, please see Appendix A: Project Summaries.



Potential pilot projects per theme

2.1 Potential pilot projects for Lancaster West

Education and Economic Development



[Wakefield District Housing \(WDH\)](#)

1 Training and Employment Hub
A network of spaces and services that provides employment, training and education services for residents, as well as affordable employment space for residents to hire.



<https://lyncburgcommunitymarket>

3 Community Market
Pop-up market spaces for emerging businesses on the estate to use.



<https://worpoofestival.co.uk/>

2 Library of resources
A library with useful guides and resources for residents to build their skills.



<https://architecture.academart.edu/>

4 Community Pavilion
A permanent or semi-permanent structure to enable outdoor sheltered activities, including those from emerging businesses on the estate.

2.1 Potential pilot projects for Lancaster West

Connected Communities



<https://www.dezeen.com/2016/09/23/>

- 1 Art crossings**
An intervention to create safer crossings and build identity.



<https://www.pinterest.es/>

- 4 Lighting improvements**
Lighting for communal areas to increase safety.



<https://www.azimemagazine.com/article/>

- 7 Services Hub**
A space where users can get safe and convenient access to available services.



<https://www.groundcontrolsystems.com/>

- 2 Cycle / scooter parking**
Improved and increased provision of active travel infrastructure.



<https://www.esocet.com/projects/>

- 5 Play streets**
Pedestrianising a vehicular space to allow for space for activities, leisure, dwelling and greening.



https://weller.com/reanville_space/

- 3 Community centre**
A new or improved existing community space owned, led and managed by residents to provide activities for families, children and youth.



<http://www.marlabenstein.com/>

- 6 Neighbourhood Totems**
Structures to help people navigate the estate and link to key locations and services.

2.1 Potential pilot projects for Lancaster West

Health and Wellbeing



<https://www.dailymail.co.uk/email/>

- 1 Timber outdoor gym**
Sustainable gym structures for physical activity.



<https://www.maggies.org/about-us/>

- 4 Sensory garden**
A space with features that stimulate people's senses to contribute to physical and mental health and wellbeing.



<https://driffin.com.au/product/>

- 2 Sports areas**
Spaces for outdoor activities like table tennis, chess and dominoes.



<https://news.richmond.edu/>

- 5 Wellbeing Centre**
A walk in health and wellbeing centre, for both preventative and aftercare mental health support providing a programme of activities (yoga, dancing, etc) and professional advice.



<https://hastonemrtaisure.com/>

- 3 Activity trail**
A trail around the estate for all ages linking key sports and leisure locations and activities.



<https://dunmanangrove.com/>

- 6 Adventure playground**
A space for children to enjoy and encourage physical activity.

2.1 Potential pilot projects for Lancaster West

Sustainability and a Green Estate



<https://www.thegoodlifecentre>

- 1 Repair shop**
A repair shop where items can be repaired within the community free of charge.



<https://www.mesuplaning>

- 4 Greening of communal spaces**
Greening of spaces to improve access to nature and biodiversity.



<https://www.townhedgegardens>

- 2 Library of things**
A library of things where household items, appliances and tools can be borrowed within the community free of charge.



<http://www.drumsivky.co>

- 5 Community gardens**
More community gardens to build on the already successful small-scale initiatives.



<https://fuelpovertyresource.org.uk/>

- 3 Fuel support hub**
A service to help residents understand their energy usage and bills and make changes in their homes to save energy whilst remaining comfortable.



<https://www.theguardian.com/>

- 6 Food growing spaces**
Communal spaces for residents to grow their own food.

2.2 Community engagement

YOUR REFURB YOUR NEIGHBOURHOOD

On the 23 October 2021, a community engagement event was held to gather feedback from residents on the vision and other refurbishment works happening on the estate.

The potential pilot projects were presented to residents as areas to be explored as part of the vision process.

Residents used stickers to locate their preferred projects on a map of the estate, and provided further feedback and additional ideas.

The feedback from this event was integrated into the Opportunity Map and Opportunity Matrix as evidence to understand the needs and aspirations of residents on future projects on the estate.



2.2 Community engagement

The table on this page shows the number of residents with whom we formally spoke to at the Your refurb Your neighbourhood event.

Informal conversations with individuals who didn't want to register also took place during that day. Their feedback was captured in the report however they are not counted on this table.

This table summarises engagements by block and a cumulative total across the different events to date.

Blocks	Engagement Event				Grand Total
	Community Fridge Launch	Future Neighbourhood Community Day	Web Response	Your Refurb, Your Neighbourhood Community Event	
Barandon Walk	1	5		2	8
Camelford Court		1		1	2
Camelford Walk		2			2
Clarendon Walk		1	1	1	3
Hurstway Walk		1		1	2
Moreland House				1	1
Not Resident of NK			1		1
Resident of NK	2	16			18
Talbot Grove House		6		3	9
Talbot Walk		1			1
Testerton Walk	2	2		2	6
Treadgold House		2		2	4
Upper Clarendon Walk					0
Verity Close		1			1
Grand Total	5	38	2	13	58

2.2 Community engagement

STAKEHOLDERS THEMATIC WORKSHOPS

The Future Neighbourhood Vision Project Board is made up of members of LWNT, representatives of LWRA, other departments within RBKC, service providers and other charitable and voluntary organisations that operate in and around the Lancaster West Estate.

During a Project Board meeting on 14 Oct 2021, members were asked to attend thematic workshops to discuss the potential pilot projects that form part of the Lancaster West Future Neighbourhood Vision.

Due to time limitations, not all projects were able to be discussed in this facilitated workshop to the level of detail desired. The interactive Miro boards were left open and shared with all participants who had the opportunity to contribute their thoughts at a later date. Note that as a result, not every project has stakeholder comments as part of their project summaries.

Participants were asked to give their input on the following questions using a Miro board:

- What are your thoughts on the potential pilots?
- What do you think are the challenges and opportunities?
- Do you have any suggested locations?
- Anything we missed or shouldn't consider?



Outputs from this session have been analysed per project and integrated into the Project Summaries on Appendix A. To preview the board please visit the following link: https://miro.com/app/board/o9J_IsJdBV0=

2.3 Opportunities map

MAPPING TOOL

A digital mapping tool was developed for this project to gather and register inputs digitally so they remain as evidence for future project planning.

Residents and stakeholders were given the opportunity to input into this map to indicate their preferred locations for the potential pilot projects and any other ideas they might have.

Face to Face inputs given during the engagement events and workshops were digitised by the LWFNV Engagement Assistants to be included in the exercise.

Lancaster West Future Neighbourhood Vision Opportunity Map ... A Story Map

A digital tool to map potential opportunities around the estate and the broader area

Select and locate potential pilot projects for Lancaster West from the categories below.

- Education and Economic Development
- Health and Wellbeing
- Sustainability and a Green Estate
- Connected Communities
- Any other ideas?

Health and Wellbeing

Details

Potential Opportunity (required)
Select...

Are you a ...? (required)
Select...

Is this an existing space or service you would like to see improved or is this a potential location for a new space or service? (required)
Select...

What would you like to see here? Please provide further details

Do you have any feedback for the service provider who currently operates this service or space?

Please add a photo of this place here!
Browse

Location
Click the map to draw the location.
Enter an address to search

Report It Cancel

2.3 Opportunities map

RESULTS

The map on this page summarises the results of the opportunity mapping exercise.

Projects are shown per categories in this consolidated map.

To review suggested locations per project, please refer to the Appendix A - Project Summaries.



2.4 Opportunities matrix

OVERVIEW

The Opportunities Matrix was developed jointly by Arup and LWNT to provide a summary of each potential project based on:

- Needs of the community
- Alignment with the vision and co-benefits to the 4 vision themes
- Deliverability
- Funding opportunities and project alignment

Together with the Opportunities Map, the matrix provides decision makers on and around the Lancaster West Estate with the information they need to prioritise and move forward individual project ideas. This matrix has also been used for shortlisting the project that has been taken forward in the Demonstrate Stage of the Lancaster West Future Neighbourhood Vision.

Details on the sources of information, method and assumptions for each section of the matrix are summarised in the following pages.

Project details	Need										Co-Benefit										Deliverability										Funding and Projects Alignment										Overall Score																					

2.4 Opportunities matrix

1. Need:

This section details information for each project based on the needs of the community. The methodology for this section was to quantify the amount of interest and feedback received on each project or on emerging ideas linked to individual projects and use this as a proxy indication for resident interest.

Individual comments provided across the course of the engagement events of the LWFNV were individually counted, categorised as High, Medium, Low and then scored. Scores were collated across the engagement events and weighted to give equal importance to each item.

To complement feedback received during this project, historic engagement feedback from residents was considered to understand patterns of interest and demands of services in the local area. Initial Ideas Day reports from 2018 were reviewed, with comments relating to potential projects and services in the area identified and tagged against each potential project in the vision. Individual comments were counted, and the degree of alignment was categorised as High, Medium and Low. This

component of historic engagement comments has been retained in the matrix for informative purposes only and has not been considered into the overall score for each project.

2. Co-benefit:

This section details the alignment of each project to the four vision thematic areas which were identified as community priorities during the Understand Stage:

- Education and Economic Development
- Sustainability and a Green Estate
- Health and Wellbeing
- Connected Communities

Each project has been scored based on the degree of alignment to each of these thematic areas - with projects that have potential to generate benefits in multiple areas receiving greater scores. This qualitative assessment was undertaken based on review of outcomes from best practice case studies as identified in the Playbook of Ideas, as well as by talking to residents and stakeholders.

3. Deliverability:

Projects are scored based on complexity and

timescale of delivery.

Complexity of projects estimation is based on stakeholders input and experience.

Timeline (short, medium and long term) has been estimated based on examples from the Playbook of Ideas and experience.

4. Alignment with other funding opportunities and projects:

This section details how proposed projects align and potentially build on existing initiatives, and whether they have a realistic opportunity to be funded from known sources.

2.4 Opportunities matrix

LIMITATIONS AND ASSUMPTIONS

- Scoring of resident engagement in the Need section of this matrix has drawn from engagement with residents and stakeholders during this project. It is acknowledged that engagement data collected is not representative of the entire community and therefore this scoring and prioritisation should be contextualised further with additional consultation and validation as the LWNT takes individual project ideas forward.
 - Scoring on the Co-benefits section of this matrix is a qualitative assessment to provide an indication of potential benefits individual projects could realise. Quantification of actual benefits against specific outcome level indicators was not done for the purposes of this matrix.
 - Complexity of project delivery is based on stakeholders input. Feasibility studies (economic, infrastructure, etc) might be needed to determine full extent of complexity.
 - Timeline (short-med-long term) has been estimated considering best practice and experience. This includes time needed for obtaining planning permission, however this may vary depending on the design and further details of the project.
- For the timeline criteria, projects are thought in their most permanent version, however 'meanwhile use' / pilot options might be possible in shorter timeframes.
 - Projects have not been costed therefore this has not influenced the assessment.



Appendices

3.

A - Project Summaries
Education and Economic Development
Health and Wellbeing
Sustainability and a Green Estate
Connected Communities



A - Project Summaries



Education
& Economic
Development

Training and
Employment Hub

Library of Resources

Community Market

Community Pavilion



Health &
Wellbeing

Adventure
Playground

Timber Outdoor Gym

Sports Areas

Activity Trail

Sensory Garden

Wellbeing Centre



Sustainability &
A Green Estate

Repair Shop

Library of Things

Fuel Support Hub

Greening of
Communal Spaces

Food Growing
Spaces

Community Gardens



Connected
Communities

Art Crossings

Cycle/Scooter
Parking

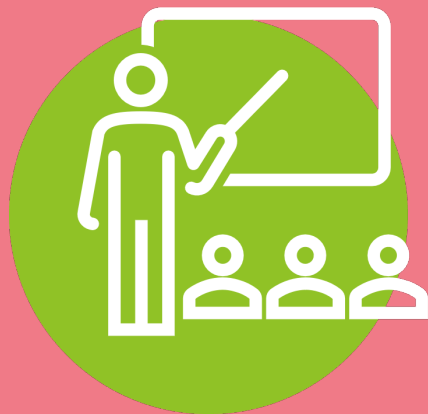
Community Centre

Lighting
Improvements

Play Streets

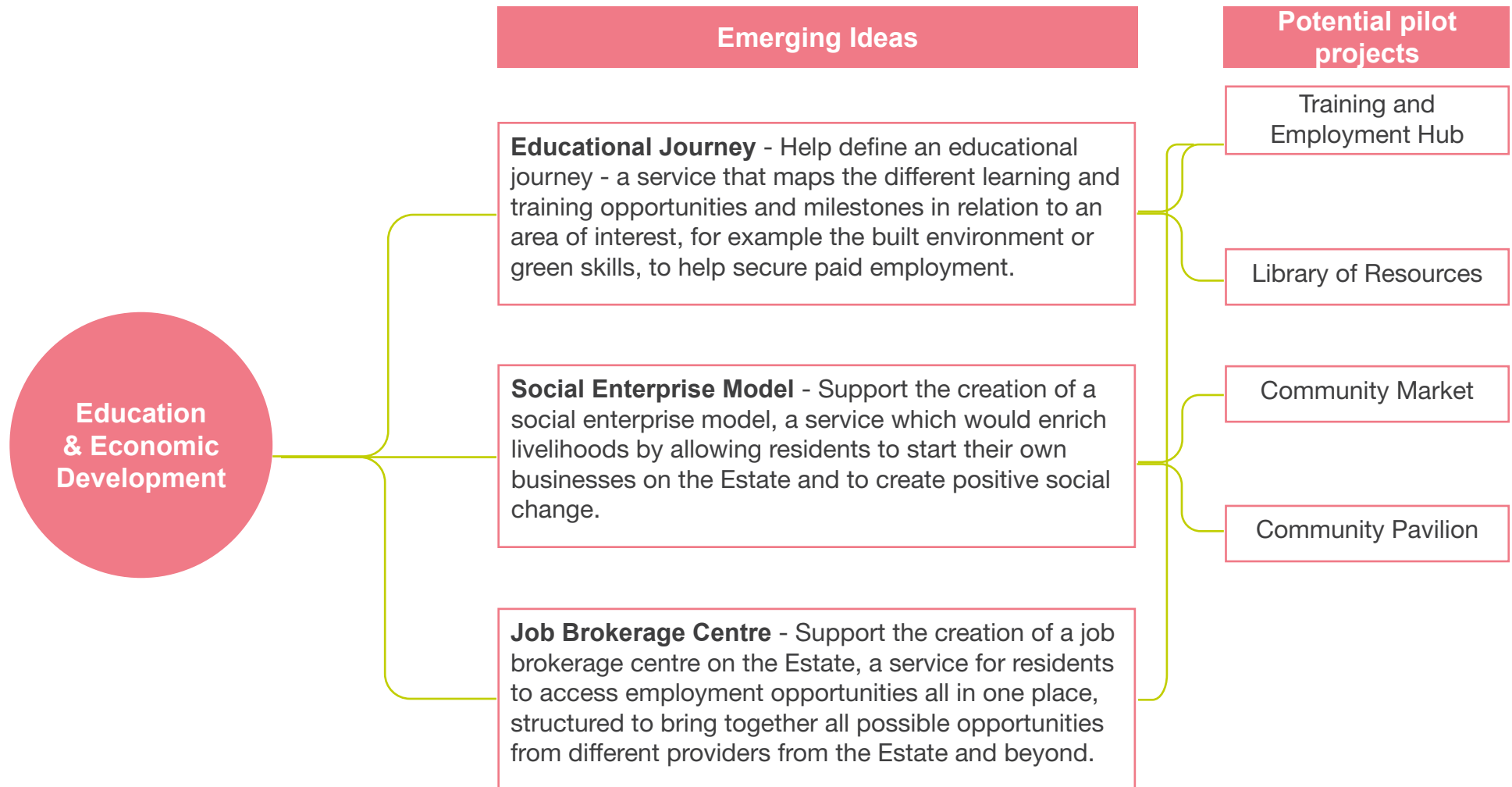
Neighbourhood
Totems

Services Hub



Education & Economic Development

Education & Economic Development



Training and Employment Hub



Waterfield District Housing (WDH)

DESCRIPTION

A network of spaces and services that provides employment, training and education services for residents, as well as affordable employment space for residents to hire.

The Training and Employment Hub would be the location from where the Job Brokery Centre could operate from and could provide access to the Lancaster West educational journeys.

OPPORTUNITY MATRIX SCORING

The following table shows further details on the scoring achieved by this project on the Opportunities Matrix.

NEED					ALIGNMENT WITH THE VISION AND CO-BENEFITS				
Votes from Community Day (aggregated data)	Pins on Opportunities Map (aggregated data)	Comments from all FNV engagement events (aggregated data)	Alignment to Initial Ideas Day 2018 Feedback (assessment) – not used for scoring	Overall Aggregated Data Score	- Education and Economic Development	Health and Wellbeing	Sustainability and Greener Estate	Connected Communities	Overall Data Score
5 - High - 6+ Votes 3 - Med - 4 - 6 Votes 1 - Low - 1 - 3 Votes 0 - No Votes	5 - High - 6+ Votes 3 - Med - 4 - 6 Votes 1 - Low - 1 - 3 Votes 0 - No Votes	5 - High - 15+ Comments 3 - Med - 8 - 15 Comments 1 - Low - 1 - 7 Comments 0 - No Comments	High -10+ comments Medium - 6 - 9 Low - 1 - 5 No Comment	Each component evenly weighted - total maximum score of 15 (Auto-calculated)	5 - High - XX 3 - Medium - XX 1 - Low - XX 0 - No Alignment	5 - High - XX 3 - Medium - XX 1 - Low - XX 0 - No Alignment	5 - High - XX 3 - Medium - XX 1 - Low - XX 0 - No Alignment	5 - High - XX 3 - Medium - XX 1 - Low - XX 0 - No Alignment	Each component evenly weighted - total maximum score of 20 (Auto-calculated)
3	0	0	No Comments	3	5	1	3	3	12
DELIVERABILITY			ALIGNMENT WITH OTHER FUNDING OPPORTUNITIES AND PROJECTS						
Complexity of delivery and management	Expected Timescale of delivery	Overall Score	Degree to which the opportunity aligns with the Future Neighbourhood Programme	Degree to which the opportunity aligns with the Future Neighbourhood Programme	Degree to which the opportunity aligns with other secured funding stream	Degree to which the opportunity aligns with other secured funding stream	Degree to which opportunity is building on existing project	Which project?	Overall Score
High - 1 Medium - 2 Low - 3	Long (3+years) - 1 Medium (2-3 years) - 2 Short (0-1 Years) - 3	Score based on weighting	High Medium Low	Notes	High - 3 Medium - 2 Low - 1	Notes	High - 3 Medium - 2 Low - 1		(Weighted)
1	2	3	Medium	Secured funding through to develop green skills academy and provide training opportunities (energy, retrofit, horticulture)	Medium	- elements to be funded (focussed on green skills) through SHDF - potential for other funding from broader RBKC, Westminster etc.	Medium	Lanc West Works, other initiatives from LWNT	26

Training and Employment Hub

STAKEHOLDERS WORKSHOP FEEDBACK

This section summarises feedback received from stakeholders captured during the stakeholders thematic workshop.

What Do You Think?	Challenges	Opportunities
<p>Key priorities:</p> <ul style="list-style-type: none"> • Good accessibility • Being economically sustainable • Should consider needs of different groups, in particular families/parents returning to work. • Link with existing support providers and build from existing initiatives • Link with local small businesses for job opportunities in the area • Enable the transition from skills building to securing a job <p>Precedents:</p> <ul style="list-style-type: none"> • Building Lives Academy being set up - construction skills by the Council's New Homes Programme • Clement James on Sirdar Road Employment Support and Adult Learning programmes (entry level) funded through Adult Learning Grant. <p><i>'There is a history of training centre's that have not been sustainable (£s). So the wider landscape and partners with funding would need to be invited to join discussions (local College, or other partners)'</i></p>	<ul style="list-style-type: none"> • Running costs for a sustainable centre versus level of activity / impact desired • Cost to fund both the centre and a nursery at the same place • Funds for vocational Training dispensed to Colleges and private Training providers not to Council or community organisations. • Need of a provider that will be actively involved in encouraging people to take part, to help people think the centre is not institutionalised, and to be confident enough to share apprehensions. 	<ul style="list-style-type: none"> • Build parents skills to get back to work. • Good opportunities to test various elements prior to scaling up on larger scale; all lessons learnt can be taken forward. • Confidence Building programmes - through activities are one of the Grenfell projects we are commissioning now. • Support the LWE Refurbishment already creating jobs. • Undertake a skills audit of residents. • Promote training in the workplace through placements.

Training and Employment Hub

STAKEHOLDERS WORKSHOP FEEDBACK (CONT.)

Suggested Locations	Anything Missing?
<ul style="list-style-type: none"> • NKRC • Close to North Kensington Leisure Centre • Baseline • Potential partners: The Curve, Bay 20, College site on Wornington Road. <p><i>The space at Maxilla was at one time a vocational training centre - it went out of business. The local College took it on, couldn't make it work and handed back lease when college was in financial difficulty, now a community use which could include training, but not certain where this concept has reached.</i></p>	<ul style="list-style-type: none"> • Opportunities for internships or apprenticeships • A workplace for everyone • Link with the digital work placement pilot underway with technology companies currently recruiting1 • Make this a green jobs and skills centre at NKRC • Integrate with the LWE Social Value strategy • How local versus boroughwide projects and activity are balanced - A course in a particular focused subject may need applicants from across the borough to be run economically. • Target sectors with opportunities - health and local NHS Trust has 10% vacancies on 3500 staff • Access to essential skills including literacy, numeracy and digital skills already in place by various community providers, including NOVA, Westway Trust, Opejn Age, Clement James ADKC, Morley College). • Campaigns on the Estate to increase this engagement.

The following key themes were identified:

- Cost / Funding challenges
- Build from existing initiatives
- Link with local / existing support
- Support parents getting back to work
- Having the right provider is key

Training and Employment Hub

RESIDENTS FEEDBACK

This section summarises feedback received from residents captured during the engagement events:

- Community Day
- Your Refurb. Your Neighbourhood
- Community Fridge Launch
- Web response

There were 22 comments given by residents during all engagement events that have been tagged against this project as they either relate to the project or the project has the potential to address that specific issue.

The following key themes were identified:

- Support for parents/adults to build skills and get back to work
- Support for young people
- Learning, tutoring and other educational activities for kids
- Math, English, IT courses
- Studio spaces for hire for residents/young people
- Link with volunteering

Residents comments

- Bring back rise(essential care and homework place for kids)
- Center for single mums where they can build there build skills for work
- Curve activities closest classes
- education for adults in the morning between 10 to 12
- Education for kids free when they are in half term of school so they can have a child centre or play centre
- Educational activities to support children, catch up with their learning
- English courses to learn how to communicate or read (but not ESOL courses)
- free IT support or courses for children's
- GCSE courses
- Homework club
- Job brokerage to get back into work
- Math and English courses for GCSE
- More activities and education schemes targeted to young girls also support with getting into unit
- More area for young people to find jobs in the area
- More educational programmes; better courses for children and young kids
- Science classes using volunteers
- Skills training for people to work/ to improve skills eg.30 + not young people
- Spaces/studio residents can use
- studio spaces for young people
- tuition for kids cheaper
- Tutoring for teenagers for the future of their careers
- volunteering programmes to help elderly to use computers

Training and Employment Hub

SUGGESTED LOCATIONS

This map summarises the locations suggested by residents and stakeholders for this project during the opportunity mapping stage.

○ Potential Locations:

- Latimer Road Arches
- Resource Centre
- Baseline
- Station Walk

The locations identified are based on feedback from residents and key stakeholders who operate in the local area. Feasibility of these locations has been verified by the LWNT and key stakeholders which has led to minor amendments and modifications of the original map. Additional possible locations have also been included after this review. These locations will need to be further reviewed and tested as part of each individual project design process.



- A. Camborne Mews
- B. Barandon Walk
- C. Camelford Court
- D. Upper & Lower Camelford Court
- E. Lower Clarendon Walk
- F. Clarendon Walk
- G. Upper Clarendon Walk
- H. Hurstway Walk
- I. Morland House
- J. Talbot Grove House
- K. Lower Talbot Walk
- L. Testerton Walk
- M. Treadgold House
- N. Upper Talbot Walk
- O. Verity Close
- P. Bormore Road Apartments

- £ Education and Economic Development
- 1. Training and employment centre
- 2. Library of resources
- 3. Community Market
- 4. Community Pavilion

Library of resources



<https://www.opportunitiesforlancaster.co.uk/news/2018/09/19/creating-a-library-of-resources/>

DESCRIPTION

A library with useful guides and resources for residents to build their skills. When operating as a mobile library, it can be moved around key locations and open spaces as a way to reach users, especially those with accessibility issues.

There are several models of pop-up libraries and even though they are usually a commercial operation, they showcase a creative way of bringing education resources closer to people. This project might be combined with the Training and Employment Hub.

OPPORTUNITY MATRIX SCORING

The following table shows further details on the scoring achieved by this project on the Opportunities Matrix.

NEED				ALIGNMENT WITH THE VISION AND CO-BENEFITS					Overall Data Score
Votes from Community Day (aggregated data)	Pins on Opportunities Map (aggregated data)	Comments from all FNV engagement events (aggregated data)	Alignment to Initial Ideas Day 2018 Feedback (assessment) – not used for scoring	Overall Aggregated Data Score	- Education and Economic Development	Health and Wellbeing	Sustainability and Greener Estate	Connected Communities	
5 - High - 6+ Votes 3 - Med - 4 - 6 Votes 1 - Low - 1 - 3 Votes 0 - No Votes	5 - High - 6+ Votes 3 - Med - 4 - 6 Votes 1 - Low - 1 - 3 Votes 0 - No Votes	5 - High - 15+ Comments 3 - Med - 8 - 15 Comments 1 - Low - 1 - 7 Comments 0 - No Comments	High -10+ comments Medium - 6 - 9 Low - 1 - 5 No Comment	Each component evenly weighted - total maximum score of 15 (Auto-calculated)	5 - High - XX 3 - Medium - XX 1 - Low - XX 0 - No Alignment	5 - High - XX 3 - Medium - XX 1 - Low - XX 0 - No Alignment	5 - High - XX 3 - Medium - XX 1 - Low - XX 0 - No Alignment	5 - High - XX 3 - Medium - XX 1 - Low - XX 0 - No Alignment	Each component evenly weighted - total maximum score of 20 (Auto-calculated)
3	0	0	No Comments	3	5	1	3	3	12
DELIVERABILITY			ALIGNMENT WITH OTHER FUNDING OPPORTUNITIES AND PROJECTS					Overall Score	
Complexity of delivery and management	Expected Timescale of delivery	Overall Score	Degree to which the opportunity aligns with the Future Neighbourhood Programme	Degree to which the opportunity aligns with the Future Neighbourhood Programme	Degree to which the opportunity aligns with other secured funding stream	Degree to which the opportunity aligns with other secured funding stream	Degree to which opportunity is building on existing project		Which project?
High - 1 Medium - 2 Low - 3	Long (3+years) - 1 Medium (2-3 years) - 2 Short (0-1 Years) - 3	Score based on weighting	High Medium Low	Notes	High - 3 Medium - 2 Low - 1	Notes	High - 3 Medium - 2 Low - 1		(Weighted)
2	3	5	Medium	Lots in future neighbourhoods bid around green skills and training, so would probably have scope to include this but only with specifically green focus	Low	potentially look for funding from wider education budget but nothing at the moment	Low		20

Library of resources

STAKEHOLDERS WORKSHOP FEEDBACK

This section summarises feedback received from stakeholders captured during the stakeholders thematic workshop.

What Do You Think?	Challenges	Opportunities
<ul style="list-style-type: none">• Good idea - but first we need to do what residents are asking first, like a place where to build their skills, or activities for kids with accessible prices.	<ul style="list-style-type: none">• Needs to be a firm structure and with good management.• Challenges with getting things back and in good conditions - Project needs careful managing.	<ul style="list-style-type: none">• To connect more as a community, be more aware of how we can become together and sharing• Make us more green or sustainable.• A mobile library of resources would be excellent to reach more people with disabilities.• 3 or 4 mobile units focusing on either different age groups or employment resources etc.• Would be great to have some LFB Community Engagement Contact details on this stand as it could reach community members who are unsure how to contact us.

Library of resources

STAKEHOLDERS WORKSHOP FEEDBACK (CONT.)

Suggested Locations	Anything Missing?
<ul style="list-style-type: none">• Mobile library	<ul style="list-style-type: none">• Nothing added

The following key themes were identified:

- Management challenges
- Perhaps not an immediate priority
- Mobile version valuable for people with disabilities
- Different age groups
- Point of contact for providers

RESIDENTS FEEDBACK

No comments were received from residents during the engagement events that can be tagged against this project.

SUGGESTED LOCATIONS

There were no locations suggested by residents and stakeholders for this project during the opportunity mapping stage.

Community Market



<https://lancastercommunitymarket.com/>

DESCRIPTION

Markets play a key role in the development and growth of neighbourhoods. They play a vital role as a community gathering place and can provide access to fresh healthy food while supporting local businesses.

A pop-up or more permanent market can help showcase the most exciting independent businesses from Lancaster West and Notting Dale, providing a new destination that supports them to set up their shop and share space, skills and ideas.

OPPORTUNITY MATRIX SCORING

The following table shows further details on the scoring achieved by this project on the Opportunities Matrix.

NEED				ALIGNMENT WITH THE VISION AND CO-BENEFITS					Overall Data Score
Votes from Community Day (aggregated data)	Pins on Opportunities Map (aggregated data)	Comments from all FNV engagement events (aggregated data)	Alignment to Initial Ideas Day 2018 Feedback (assessment) – not used for scoring	Overall Aggregated Data Score	- Education and Economic Development	Health and Wellbeing	Sustainability and Greener Estate	Connected Communities	
5 - High - 6+ Votes 3 - Med - 4 - 6 Votes 1 - Low - 1 - 3 Votes 0 - No Votes	5 - High - 6+ Votes 3 - Med - 4 - 6 Votes 1 - Low - 1 - 3 Votes 0 - No Votes	5 - High - 15+ Comments 3 - Med - 8 - 15 Comments 1 - Low - 1 - 7 Comments 0 - No Comments	High -10+ comments Medium - 6 - 9 Low - 1 - 5 No Comment	Each component evenly weighted - total maximum score of 15 (Auto-calculated)	5 - High - XX 3 - Medium - XX 1 - Low - XX 0 - No Alignment	5 - High - XX 3 - Medium - XX 1 - Low - XX 0 - No Alignment	5 - High - XX 3 - Medium - XX 1 - Low - XX 0 - No Alignment	5 - High - XX 3 - Medium - XX 1 - Low - XX 0 - No Alignment	Each component evenly weighted - total maximum score of 20 (Auto-calculated)
3	3	1	No Comments	7	5	3	3	5	16
DELIVERABILITY			ALIGNMENT WITH OTHER FUNDING OPPORTUNITIES AND PROJECTS					Overall Score	
Complexity of delivery and management	Expected Timescale of delivery	Overall Score	Degree to which the opportunity aligns with the Future Neighbourhood Programme	Degree to which the opportunity aligns with the Future Neighbourhood Programme	Degree to which the opportunity aligns with other secured funding stream	Degree to which the opportunity aligns with other secured funding stream	Degree to which opportunity is building on existing project		Which project?
High - 1 Medium - 2 Low - 3	Long (3+years) - 1 Medium (2-3 years) - 2 Short (0-1 Years) - 3	Score based on weighting	High Medium Low	Notes	High - 3 Medium - 2 Low - 1	Notes	High - 3 Medium - 2 Low - 1		(Weighted)
2	3	5	Low		Low	GLA good growth fund (if ongoing) would fund this sort of thing but nothing at the moment	Low		28

Community Market

STAKEHOLDERS WORKSHOP FEEDBACK

This section summarises feedback received from stakeholders captured during the stakeholders thematic workshop.

What Do You Think?	Challenges	Opportunities
<ul style="list-style-type: none"> • This is great idea but we would need to support residents on how set up a street market • Very exciting and useful learning experience for the young, for those with learning issues and for everyone engaged in business/enterprise. • Any food production and some other activities need monitoring for quality. • Not all business can trade in a street market environment and most street traders appear in various locations. <p>Precedents:</p> <ul style="list-style-type: none"> • Link to Youthquake which is a project that works with young people to access street market in Portobello. • Some good local experience of this in schools, perhaps different outputs in different areas. • The Rail Arches - Lockton Street we expect to be affordable workspace - owned by TfL. This could provide something related to community type market operation. 	<ul style="list-style-type: none"> • Lack of knowledge from residents to set up their own street market business (legal knowledge) • A Christmas Market was trialed outside the Sports Centre. This would need a lot of management and oversight to be run safely. • Sale of local food production needs to be monitored. 	<ul style="list-style-type: none"> • Engage with Council Markets Team they manage and assist with street trading. • Link to local food production. • A chance to learn how to have a own small business, it could make more people independent creating their own jobs. • Good opportunity for smaller businesses to promote their products. • Invite Portobello Business Centre to help advise or train potential entrepreneurs.

Community Market

STAKEHOLDERS WORKSHOP FEEDBACK (CONT.)

Suggested Locations	Anything Missing?
<ul style="list-style-type: none">• By Leisure Centre or Station Walk• Move them around - not always in the same place- eg food pop up near leisure• Close to Latimer road or to Ladbroke road• A shared Kitchen - The retail unit on Silchester / Lockton Street was due to be a test kitchen and retail space but now occupied by community org full time.• Lockton Street arches• Close to NKLC• Potential community market NKLC entrance• Mobile- can be moved close to playgrounds or during outdoor events around the estate. Bring resources to people - more engagement like this	<ul style="list-style-type: none">• Nothing added

The following key themes were identified:

- Additional support for residents needed
- Potential to link with existing businesses
- Range of possible locations
- Maintenance challenges

Community Market

RESIDENTS FEEDBACK

This section summarises feedback received from residents captured during the engagement events:

- Community Day
- Your Refurb. Your Neighbourhood
- Community Fridge Launch
- Web response

There were 5 comments given by residents during all engagement events that have been tagged against this project as they either relate to the project or the project has the potential to address that specific issue.

The following key themes were identified:

- Opportunity for community cohesion
- Food and events
- Spaces for residents to use

Residents comments

- Bringing the community together and participating as one
- Community space. Bringing community together
- International event day
- More events for everyone and food events
- Spaces/studio residents can use

Community Market

SUGGESTED LOCATIONS

This map summarises the locations suggested by residents and stakeholders for this project during the opportunity mapping stage.

○ Potential Locations:

- Railway arches
- Green area of Kensington Leisure Centre
- Lower Talbot Walk

The locations identified are based on feedback from residents and key stakeholders who operate in the local area. Feasibility of these locations has been verified by the LWNT and key stakeholders which has led to minor amendments and modifications of the original map. Additional possible locations have also been included after this review. These locations will need to be further reviewed and tested as part of each individual project design process.



- £ Education and Economic Development
- 1. Training and employment centre
- 2. Library of resources
- 3. Community Market
- 4. Community Pavilion

Community Pavilion



<https://architecture.academyart.edu/portfolio/item/>

DESCRIPTION

A permanent or semi-permanent structure to enable outdoor sheltered activities, including those from emerging businesses on the estate.

A community pavilion can include space for cooking, eating and gathering for Lancaster West residents. It can also function as a safe place for youth and young adults to spend their time in, and as an outdoor structure it can support food growing activities on the estate as a distribution space.

OPPORTUNITY MATRIX SCORING

The following table shows further details on the scoring achieved by this project on the Opportunities Matrix.

NEED				ALIGNMENT WITH THE VISION AND CO-BENEFITS					
Votes from Community Day (aggregated data)	Pins on Opportunities Map (aggregated data)	Comments from all FNV engagement events (aggregated data)	Alignment to Initial Ideas Day 2018 Feedback (assessment) – not used for scoring	Overall Aggregated Data Score	- Education and Economic Development	Health and Wellbeing	Sustainability and Greener Estate	Connected Communities	Overall Data Score
5 - High - 6+ Votes 3 - Med - 4 - 6 Votes 1 - Low - 1 - 3 Votes 0 - No Votes	5 - High - 6+ Votes 3 - Med - 4 - 6 Votes 1 - Low - 1 - 3 Votes 0 - No Votes	5 - High - 15+ Comments 3 - Med - 8 - 15 Comments 1 - Low - 1 - 7 Comments 0 - No Comments	High -10+ comments Medium - 6 - 9 Low - 1 - 5 No Comment	Each component evenly weighted - total maximum score of 15 (Auto-calculated)	5 - High - XX 3 - Medium - XX 1 - Low - XX 0 - No Alignment	5 - High - XX 3 - Medium - XX 1 - Low - XX 0 - No Alignment	5 - High - XX 3 - Medium - XX 1 - Low - XX 0 - No Alignment	5 - High - XX 3 - Medium - XX 1 - Low - XX 0 - No Alignment	Each component evenly weighted - total maximum score of 20 (Auto-calculated)
3	1	5	Medium	9	5	3	0	5	13
DELIVERABILITY			ALIGNMENT WITH OTHER FUNDING OPPORTUNITIES AND PROJECTS						
Complexity of delivery and management	Expected Timescale of delivery	Overall Score	Degree to which the opportunity aligns with the Future Neighbourhood Programme	Degree to which the opportunity aligns with the Future Neighbourhood Programme	Degree to which the opportunity aligns with other secured funding stream	Degree to which the opportunity aligns with other secured funding stream	Degree to which opportunity is building on existing project	Which project?	Overall Score
High - 1 Medium - 2 Low - 3	Long (3+years) - 1 Medium (2-3 years) - 2 Short (0-1 Years) - 3	Score based on weighting	High Medium Low	Notes	High - 3 Medium - 2 Low - 1	Notes	High - 3 Medium - 2 Low - 1		(Weighted)
3	2	5	Low		Low		Low		27

Community Pavilion

STAKEHOLDERS WORKSHOP FEEDBACK

This section summarises feedback received from stakeholders captured during the stakeholders thematic workshop.

What Do You Think?	Challenges	Opportunities
<ul style="list-style-type: none">Amazing idea	<ul style="list-style-type: none">None identified	<ul style="list-style-type: none">A warm place to have business running in winter

Suggested Locations	Anything Missing?
<ul style="list-style-type: none">Verity Close Playground	<ul style="list-style-type: none">Nothing added

The following key themes were identified:

- A space to shelter from weather and cold
- Could be linked with kids playground

Community Pavilion

RESIDENTS FEEDBACK

This section summarises feedback received from residents captured during the engagement events:

- Community Day
- Your Refurb. Your Neighbourhood
- Community Fridge Launch
- Web response

There were 26 comments given by residents during all engagement events that have been tagged against this project as they either relate to the project or the project has the potential to address that specific issue.

The following key themes were identified:

- Community activities and events
- A space for youth and kids

Residents comments

- Activities after school or weekends (free or very low amount to pay)
- after school activities and more youth clubs
- Both resource centre (under the tower and the one that flooded) are closed we need a space for the community
- Bringing the community together and participating as one
- Clubs for young people that surrounds the art
- Community centre
- community events after school activities and youth clubs
- community events for kids
- Community Pavillon
- Community space. Bringing community together
- International event day
- Lighting improvement
- More actives for different age groups
- More actives for kids(sports +Events)
- more community events
- More events
- More events for everyone and food events
- Neighbourhood totems
- Play streets
- rise , need new space after flooding of the centre
- Services Hub
- Spaces/studio residents can use
- Training and employment

Community Pavilion

SUGGESTED LOCATIONS

This map summarises the locations suggested by residents and stakeholders for this project during the opportunity mapping stage.

○ Potential Locations:

- Verity Close
- Clarendon Walk
- Between Testerton and Barandon Walk
- Lancaster Green

The locations identified are based on feedback from residents and key stakeholders who operate in the local area. Feasibility of these locations has been verified by the LWNT and key stakeholders which has led to minor amendments and modifications of the original map. Additional possible locations have also been included after this review. These locations will need to be further reviewed and tested as part of each individual project design process.

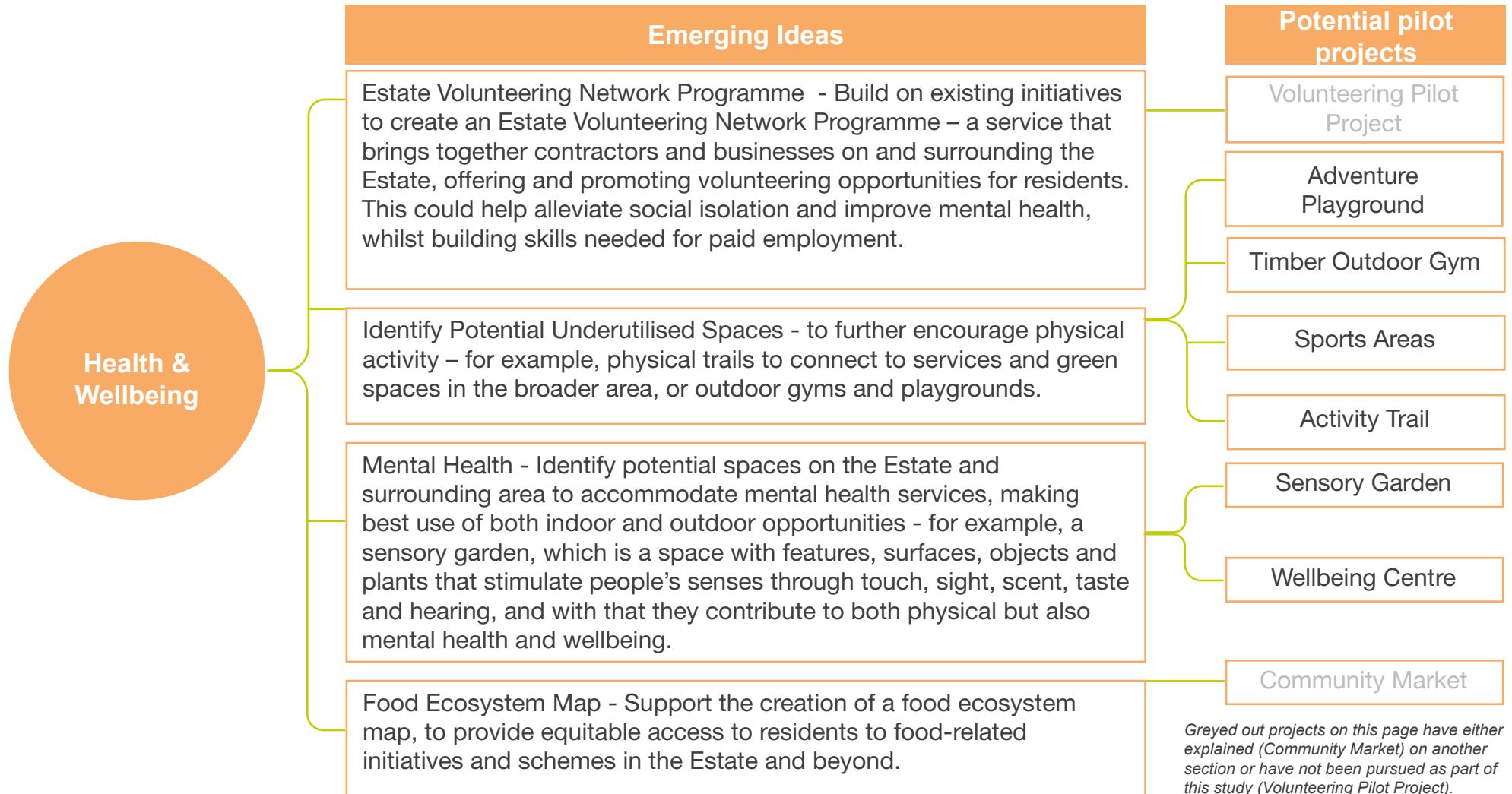


- £ Education and Economic Development
- 1. Training and employment centre
- 2. Library of resources
- 3. Community Market
- 4. Community Pavilion



Health and Wellbeing

Health & Wellbeing



Adventure Playground



<https://uncraindove.com/lespoke-playgrounds/>

DESCRIPTION

A space for children to enjoy and encourage physical activity.

A context-sensitive design with unique play elements to reference the specific characteristics of Lancaster West and its surrounding community could work as a space to celebrate the community and identity of the place.

A playground can include sustainable features like water management, irrigation, and circularity in the use of materials.

OPPORTUNITY MATRIX SCORING

The following table shows further details on the scoring achieved by this project on the Opportunities Matrix.

NEED					ALIGNMENT WITH THE VISION AND CO-BENEFITS				
Votes from Community Day (aggregated data)	Pins on Opportunities Map (aggregated data)	Comments from all FNV engagement events (aggregated data)	Alignment to Initial Ideas Day 2018 Feedback (assessment) – not used for scoring	Overall Aggregated Data Score	- Education and Economic Development	Health and Wellbeing	Sustainability and Greener Estate	Connected Communities	Overall Data Score
5 - High - 6+ Votes 3 - Med - 4 - 6 Votes 1 - Low - 1 - 3 Votes 0 - No Votes	5 - High - 6+ Votes 3 - Med - 4 - 6 Votes 1 - Low - 1 - 3 Votes 0 - No Votes	5 - High - 15+ Comments 3 - Med - 8 - 15 Comments 1 - Low - 1 - 7 Comments 0 - No Comments	High -10+ comments Medium - 6 - 9 Low - 1 - 5 No Comment	Each component evenly weighted - total maximum score of 15 (Auto-calculated)	5 - High - XX 3 - Medium - XX 1 - Low - XX 0 - No Alignment	5 - High - XX 3 - Medium - XX 1 - Low - XX 0 - No Alignment	5 - High - XX 3 - Medium - XX 1 - Low - XX 0 - No Alignment	5 - High - XX 3 - Medium - XX 1 - Low - XX 0 - No Alignment	Each component evenly weighted - total maximum score of 20 (Auto-calculated)
3	5	3	Medium	11	0	5	1	5	11
DELIVERABILITY			ALIGNMENT WITH OTHER FUNDING OPPORTUNITIES AND PROJECTS						
Complexity of delivery and management	Expected Timescale of delivery	Overall Score	Degree to which the opportunity aligns with the Future Neighbourhood Programme	Degree to which the opportunity aligns with the Future Neighbourhood Programme	Degree to which the opportunity aligns with other secured funding stream	Degree to which the opportunity aligns with other secured funding stream	Degree to which opportunity is building on existing project	Which project?	Overall Score
High - 1 Medium - 2 Low - 3	Long (3+years) - 1 Medium (2-3 years) - 2 Short (0-1 Years) - 3	Score based on weighting	High Medium Low	Notes	High - 3 Medium - 2 Low - 1	Notes	High - 3 Medium - 2 Low - 1		(Weighted)
3	3	6	Medium	Funding for Verity Close playground area in future neighbourhoods but no set plan for what this will involve	High	already funding for Avondale Park from RBKC Parks and Leisure to build this	Medium	Avondale Park	28

Adventure Playground

STAKEHOLDERS WORKSHOP FEEDBACK

This section summarises feedback received from stakeholders captured during the stakeholders thematic workshop.

What Do You Think?	Challenges	Opportunities
<ul style="list-style-type: none">No comments	<ul style="list-style-type: none">No comments	<ul style="list-style-type: none">No comments

Suggested Locations	Anything Missing?
<ul style="list-style-type: none">Avondale park	<ul style="list-style-type: none">No comments

The following key themes were identified:

- Project might be suitable for local park (Avondale Park)

Adventure Playground

RESIDENTS FEEDBACK

This section summarises feedback received from residents captured during the engagement events:

- Community Day
- Your Refurb. Your Neighbourhood
- Community Fridge Launch
- Web response

There were 14 comments given by residents during all engagement events that have been tagged against this project as they either relate to the project or the project has the potential to address that specific issue.

The following key themes were identified:

- More activities and spaces for kids needed
- Desire for improved and safer playgrounds

Residents comments

- Adventure park without wood
- Adventure Playground
- Bramley's soft play area
- Clubs for young people that surrounds the art
- Covered playground
- For kids health activities like sport
- Improve parks for children
- Kids, youth club and community involvement.
- More actives for different age groups
- More actives for kids(sports +Events)
- More spaces for kids and youth
- Playground for kids
- Safe Estate, safer playground
- Sport for kids, no expensive, like football for girls

Adventure Playground

SUGGESTED LOCATIONS

This map summarises the locations suggested by residents and stakeholders for this project during the opportunity mapping stage.

○ Potential Locations:

- Between Hurstway Walk and Testerton Walk
- Avondale Park
- Lancaster Green

The locations identified are based on feedback from residents and key stakeholders who operate in the local area. Feasibility of these locations has been verified by the LWNT and key stakeholders which has led to minor amendments and modifications of the original map. Additional possible locations have also been included after this review. These locations will need to be further reviewed and tested as part of each individual project design process.



Timber Outdoor Gym



<https://www.dailymail.co.uk/femail/article-8227549/>

DESCRIPTION

Sustainable gym structures for physical activity to facilitate physical exercises in a creative way.

An outdoor gym would encourage residents of Lancaster West to exercise and improve their physical health.

OPPORTUNITY MATRIX SCORING

The following table shows further details on the scoring achieved by this project on the Opportunities Matrix.

NEED				ALIGNMENT WITH THE VISION AND CO-BENEFITS					
Votes from Community Day (aggregated data)	Pins on Opportunities Map (aggregated data)	Comments from all FNV engagement events (aggregated data)	Alignment to all FNV Initial Ideas Day 2018 Feedback (assessment) – not used for scoring	Overall Aggregated Data Score	- Education and Economic Development	Health and Wellbeing	Sustainability and Greener Estate	Connected Communities	Overall Data Score
5 - High - 6+ Votes 3 - Med - 4 - 6 Votes 1 - Low - 1 - 3 Votes 0 - No Votes	5 - High - 6+ Votes 3 - Med - 4 - 6 Votes 1 - Low - 1 - 3 Votes 0 - No Votes	5 - High - 15+ Comments 3 - Med - 8 - 15 Comments 1 - Low - 1 - 7 Comments 0 - No Comments	High -10+ comments Medium - 6 - 9 Low - 1 - 5 No Comment	Each component evenly weighted - total maximum score of 15 (Auto-calculated)	5 - High - XX 3 - Medium - XX 1 - Low - XX 0 - No Alignment	5 - High - XX 3 - Medium - XX 1 - Low - XX 0 - No Alignment	5 - High - XX 3 - Medium - XX 1 - Low - XX 0 - No Alignment	5 - High - XX 3 - Medium - XX 1 - Low - XX 0 - No Alignment	Each component evenly weighted - total maximum score of 20 (Auto-calculated)
3	1	3	Medium	7	0	5	3	5	13
DELIVERABILITY			ALIGNMENT WITH OTHER FUNDING OPPORTUNITIES AND PROJECTS						
Complexity of delivery and management	Expected Timescale of delivery	Overall Score	Degree to which the opportunity aligns with the Future Neighbourhood Programme	Degree to which the opportunity aligns with the Future Neighbourhood Programme	Degree to which the opportunity aligns with other secured funding stream	Degree to which the opportunity aligns with other secured funding stream	Degree to which opportunity is building on existing project	Which project?	Overall Score
High - 1 Medium - 2 Low - 3	Long (3+years) - 1 Medium (2-3 years) -2 Short (0-1 Years) - 3	Score based on weighting	High Medium Low	Notes	High - 3 Medium - 2 Low - 1	Notes	High - 3 Medium - 2 Low - 1		(Weighted)
2	3	5	Medium	Funding for Verity Close playground area in future neighbourhoods but no set plan for what this will involve, potential here if residents requested	High	already funding for Avondale Park from RBKC Parks and Leisure to build this	Medium	Avondale Park	25

Timber Outdoor Gym

STAKEHOLDERS WORKSHOP FEEDBACK

This section summarises feedback received from stakeholders captured during the stakeholders thematic workshop.

What Do You Think?	Challenges	Opportunities
<ul style="list-style-type: none"> trim trail - Norwood Park? 	<ul style="list-style-type: none"> visibility / use helps with Anti-social behaviour Is timber the right fit for maintenance? issues around antisocial behaviour - Bid submittd for lan West in 2020 - issue identified as maintence and responsibility Challenge around who the service is for Outdoor gyms can be off putting to people with different levels of fitness 	<ul style="list-style-type: none"> is there an opportunity for skills / training around maintenance of the gym / making? The lesuire centre has offers which should be considered as part of this - could this be linked?

Timber Outdoor Gym

STAKEHOLDERS WORKSHOP FEEDBACK (CONT.)

Suggested Locations	Anything Missing?
<ul style="list-style-type: none">• Avondale Park• Walkways - clear areas between - some concerns around H&S	<ul style="list-style-type: none">• Steel Warriors- melting knives

The following key themes were identified:

- Challenges identified by stakeholders around maintenance, antisocial behaviour and responsibility
- Opportunities for training in maintenance
- Potential to link with NK Leisure Centre

Timber Outdoor Gym

RESIDENTS FEEDBACK

This section summarises feedback received from residents captured during the engagement events:

- Community Day
- Your Refurb. Your Neighbourhood
- Community Fridge Launch
- Web response

There were 14 comments given by residents during all engagement events that have been tagged against this project as they either relate to the project or the project has the potential to address that specific issue.

The following key themes were identified:

- More activities and spaces for youth needed
- Desire for wider range of activities and types of sports

Residents comments

- Adventure park without wood
- Children sport like boxing, Jiu jitsu or martial arts
- Gym for adults
- More spaces for kids and youth
- Out Door gym
- Outdoor gym
- Sport: cycling, running, tracking
- Sports: ballet, gymnastic for kids
- timber outdoor gym

Timber Outdoor Gym

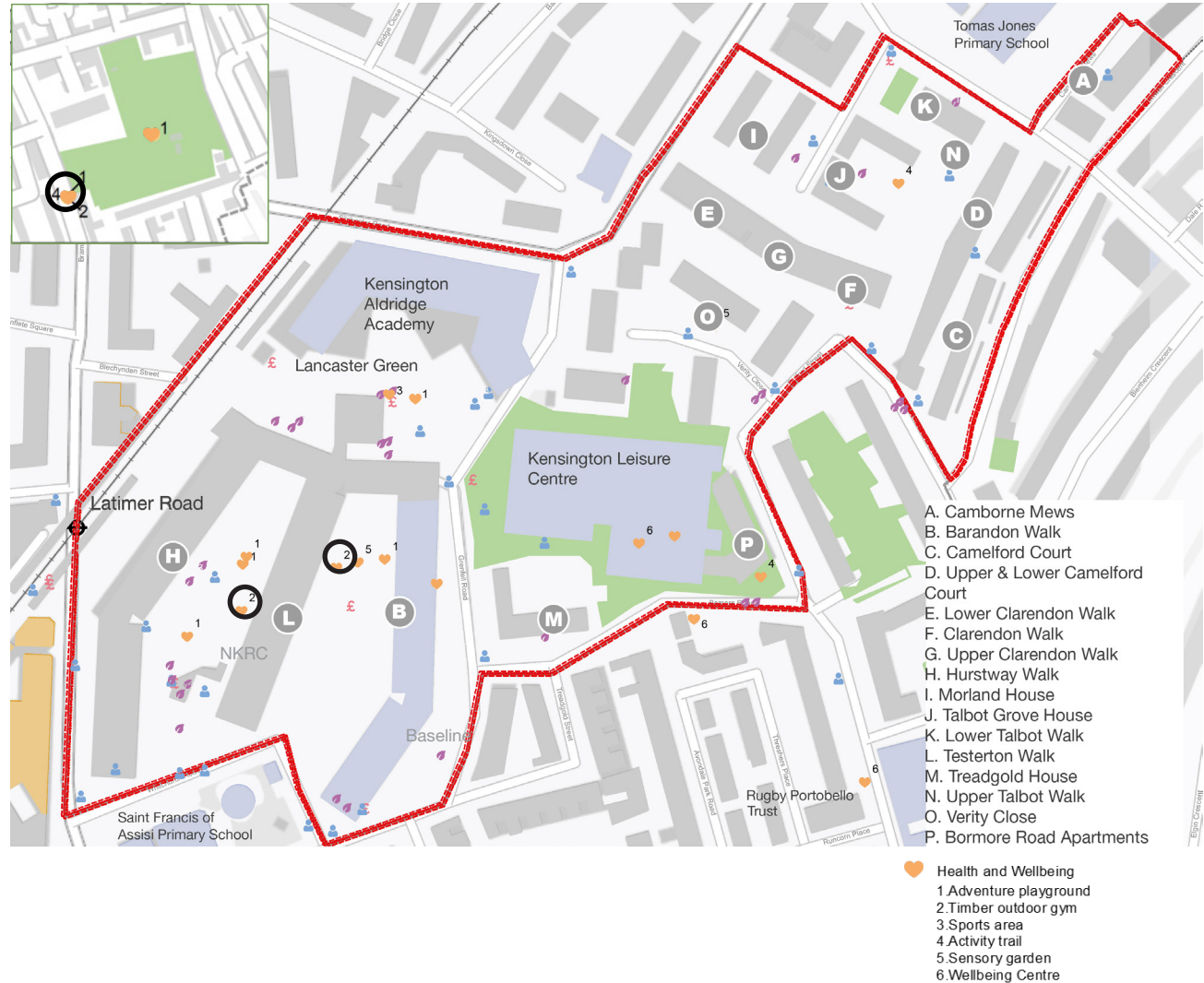
SUGGESTED LOCATIONS

This map summarises the locations suggested by residents and stakeholders for this project during the opportunity mapping stage.

○ Potential Locations:

- Between Hurstway Walk and Testerton Walk
- Between Testerton Walk and Barandon Walk
- Avondale Park

The locations identified are based on feedback from residents and key stakeholders who operate in the local area. Feasibility of these locations has been verified by the LWNT and key stakeholders which has led to minor amendments and modifications of the original map. Additional possible locations have also been included after this review. These locations will need to be further reviewed and tested as part of each individual project design process.



Sports Areas



<https://afim.com.au/product/outdoor-table-tennis->

DESCRIPTION

Outdoor and/or covered spaces for activities such as table tennis, chess and dominoes can be used to activate community facilities and open spaces.

Creatively designed sports areas can encourage active recreation and combat a sedentary lifestyle, at the same time they can add colour and help tell the story of a place through artwork, contributing to placemaking and community identity.

OPPORTUNITY MATRIX SCORING

The following table shows further details on the scoring achieved by this project on the Opportunities Matrix.

NEED				ALIGNMENT WITH THE VISION AND CO-BENEFITS					
Votes from Community Day (aggregated data)	Pins on Opportunities Map (aggregated data)	Comments from all FNV engagement events (aggregated data)	Alignment to Initial Ideas Day 2018 Feedback (assessment) – not used for scoring	Overall Aggregated Data Score	- Education and Economic Development	Health and Wellbeing	Sustainability and Greener Estate	Connected Communities	Overall Data Score
5 - High - 6+ Votes 3 - Med - 4 - 6 Votes 1 - Low - 1 - 3 Votes 0 - No Votes	5 - High - 6+ Votes 3 - Med - 4 - 6 Votes 1 - Low - 1 - 3 Votes 0 - No Votes	5 - High - 15+ Comments 3 - Med - 8 - 15 Comments 1 - Low - 1 - 7 Comments 0 - No Comments	High -10+ comments Medium - 6 - 9 Low - 1 - 5 No Comment	Each component evenly weighted - total maximum score of 15 (Auto-calculated)	5 - High - XX 3 - Medium - XX 1 - Low - XX 0 - No Alignment	5 - High - XX 3 - Medium - XX 1 - Low - XX 0 - No Alignment	5 - High - XX 3 - Medium - XX 1 - Low - XX 0 - No Alignment	5 - High - XX 3 - Medium - XX 1 - Low - XX 0 - No Alignment	Each component evenly weighted - total maximum score of 20 (Auto-calculated)
3	1	3	Low	7	1	5	1	3	10
DELIVERABILITY			ALIGNMENT WITH OTHER FUNDING OPPORTUNITIES AND PROJECTS						
Complexity of delivery and management	Expected Timescale of delivery	Overall Score	Degree to which the opportunity aligns with the Future Neighbourhood Programme	Degree to which the opportunity aligns with the Future Neighbourhood Programme	Degree to which the opportunity aligns with other secured funding stream	Degree to which the opportunity aligns with other secured funding stream	Degree to which opportunity is building on existing project	Which project?	Overall Score
High - 1 Medium - 2 Low - 3	Long (3+years) - 1 Medium (2-3 years) - 2 Short (0-1 Years) - 3	Score based on weighting	High Medium Low	Notes	High - 3 Medium - 2 Low - 1	Notes	High - 3 Medium - 2 Low - 1		(Weighted)
2	3	5	Low		High	Can be funded from internal estate budgets	Medium	Avondale Park, NKLC	22

Sports Areas

STAKEHOLDERS WORKSHOP FEEDBACK

This section summarises feedback received from stakeholders captured during the stakeholders thematic workshop.

What Do You Think?	Challenges	Opportunities
<ul style="list-style-type: none"> • Need for neighbourhood managers to have insights on locations • Complimentary with lesuire centre - less structured and different appeal • Positive polls recently on table tennis - important to engage around it - both location and choice 	<ul style="list-style-type: none"> • Conflict with dog walking • Storage needed - For pieces / equipment etc • Needs engagement programme 	<ul style="list-style-type: none"> • Popular with young people - outreach - helps to prevent dem - multi generational. • Kids playground - swapping over to adults across the course of the day - must include residents

Suggested Locations	Anything Missing?
<ul style="list-style-type: none"> • Athelone Gardens • Budapest outdoor swimming pools (reference) 	<ul style="list-style-type: none"> • Parasol going in on meditation garden roof • Covered space for weather • Can these uses move around the estate? • Chess / table tennis different users - tables can be for different other uses - eg Dominos • Outside covered spaces under a canopy - spaces that can run sessions outside

The following key themes were identified:

- Potential for less structured, multigenerational sports activities on the estate.
- Challenges identified by stakeholders around conflicts with other activities and need of an engagement programme.
- Potential to add cover / canopy to protect from weather.

Sports Areas

RESIDENTS FEEDBACK

This section summarises feedback received from residents captured during the engagement events:

- Community Day
- Your Refurb. Your Neighbourhood
- Community Fridge Launch
- Web response

There were 11 comments given by residents during all engagement events that have been tagged against this project as they either relate to the project or the project has the potential to address that specific issue.

The following key themes were identified:

- More activities and spaces for youth and kids needed
- Desire for football pitches to be brought back into the estate

Residents comments

- A football pitch
- bring back green pitches
- Bring back the cage(football pitch before KAA school was built called green pitches)
- Clubs for young people that surrounds the art
- For kids health activities like sport
- Free boxing
- More actives for different age groups
- More actives for kids(sports +Events)
- Sport for kids, no expensive, like football for girls
- Sport: cycling, running, tracking

Sports Areas

SUGGESTED LOCATIONS

This map summarises the locations suggested by residents and stakeholders for this project during the opportunity mapping stage.

○ Potential Locations:

- Portobello Rd (near Ladbroke Grove station)
- Avondale Park
- Lancaster Green

The locations identified are based on feedback from residents and key stakeholders who operate in the local area. Feasibility of these locations has been verified by the LWNT and key stakeholders which has led to minor amendments and modifications of the original map. Additional possible locations have also been included after this review. These locations will need to be further reviewed and tested as part of each individual project design process.



Activity Trail



DESCRIPTION

A trail round the estate for all ages linking key sports and leisure locations and activities is a good resource for communities wanting to improve their health and are a creative way to motivate and encourage people to reach their wellness goals while getting to know and enjoy their neighbourhood.

Activation of underused spaces with a trail can also contribute to increasing safety on the estate, as well they contribute to increasing community cohesion and creating a stronger identity.

OPPORTUNITY MATRIX SCORING

The following table shows further details on the scoring achieved by this project on the Opportunities Matrix.

NEED				ALIGNMENT WITH THE VISION AND CO-BENEFITS					
Votes from Community Day (aggregated data)	Pins on Opportunities Map (aggregated data)	Comments from all FNV engagement events (aggregated data)	Alignment to Initial Ideas Day 2018 Feedback (assessment) – not used for scoring	Overall Aggregated Data Score	- Education and Economic Development	Health and Wellbeing	Sustainability and Greener Estate	Connected Communities	Overall Data Score
5 - High - 6+ Votes 3 - Med - 4 - 6 Votes 1 - Low - 1 - 3 Votes 0 - No Votes	5 - High - 6+ Votes 3 - Med - 4 - 6 Votes 1 - Low - 1 - 3 Votes 0 - No Votes	5 - High - 15+ Comments 3 - Med - 8 - 15 Comments 1 - Low - 1 - 7 Comments 0 - No Comments	High -10+ comments Medium - 6 - 9 Low - 1 - 5 No Comment	Each component evenly weighted - total maximum score of 15 (Auto-calculated)	5 - High - XX 3 - Medium - XX 1 - Low - XX 0 - No Alignment	5 - High - XX 3 - Medium - XX 1 - Low - XX 0 - No Alignment	5 - High - XX 3 - Medium - XX 1 - Low - XX 0 - No Alignment	5 - High - XX 3 - Medium - XX 1 - Low - XX 0 - No Alignment	Each component evenly weighted - total maximum score of 20 (Auto-calculated)
3	1	1	Low	5	0	5	3	3	11
DELIVERABILITY			ALIGNMENT WITH OTHER FUNDING OPPORTUNITIES AND PROJECTS						
Complexity of delivery and management	Expected Timescale of delivery	Overall Score	Degree to which the opportunity aligns with the Future Neighbourhood Programme	Degree to which the opportunity aligns with the Future Neighbourhood Programme	Degree to which the opportunity aligns with other secured funding stream	Degree to which the opportunity aligns with other secured funding stream	Degree to which opportunity is building on existing project	Which project?	Overall Score
High - 1 Medium - 2 Low - 3	Long (3+years) - 1 Medium (2-3 years) - 2 Short (0-1 Years) - 3	Score based on weighting	High Medium Low	Notes	High - 3 Medium - 2 Low - 1	Notes	High - 3 Medium - 2 Low - 1		(Weighted)
2	3	5	Low		Low		Medium	Avondale Park	21

Activity Trail

STAKEHOLDERS WORKSHOP FEEDBACK

This section summarises feedback received from stakeholders captured during the stakeholders thematic workshop.

What Do You Think?	Challenges	Opportunities
<ul style="list-style-type: none"> Encourage people to walk and cycle. 	<ul style="list-style-type: none"> How to keep it interesting for residents - how could you refresh it over time? how to incentivise use of the community - food / drink / music - generate turn out 	<ul style="list-style-type: none"> Distributed gym along a trail - so not all equipment is in one place Could you set active lifestyle challenges for the trail link the trail to other services - use it to bring other activities into the public realm

Suggested Locations	Anything Missing?
<ul style="list-style-type: none"> Avondale Park 	<ul style="list-style-type: none"> Potential to connect with schools and other education programs - lends itself to repeat visits. Beat the streets and give incentives to walk Use augmented reality to encourage people back into the open space (eg royal parks - Gruffalo) Integrate key features and link it to biodiversity to encourage use (eg Ecology Service in Holland Park) Themed around unusual trees / species that reflect Lan West history - tell the story to help to draw people together, get it documented and use the trail as an educational tool.

The following key themes were identified:

- Potential to encourage physical activity and a more active lifestyle
- Potential to link with existing services, providers and locations
- Potential to link with other themes to generate interest (eg digital, biodiversity) and as an educational tool.
- Some challenges identified by stakeholders around need for incentives and constant refresh to attract residents.

Activity Trail

RESIDENTS FEEDBACK

This section summarises feedback received from residents captured during the engagement events:

- Community Day
- Your Refurb. Your Neighbourhood
- Community Fridge Launch
- Web response

There were 7 comments given by residents during all engagement events that have been tagged against this project as they either relate to the project or the project has the potential to address that specific issue.

The following key themes were identified:

- More activities and spaces for youth and kids needed
- Desire for wider range of activities and types of sports

Residents comments

- Children sport like boxing, Jiu jitsu or martial arts
- For kids health activities like sport
- More actives for different age groups
- running track
- Sport for kids, no expensive, like football for girls
- Sport: cycling, running, tracking
- Sports: ballet, gymnastic for kids

Activity Trail

SUGGESTED LOCATIONS

This map summarises the locations to be part of the activity trail suggested by residents and stakeholders during the opportunity mapping stage.

○ Potential Locations along the trail:

- Talbot Grove House
- Kensington Leisure Centre green
- Avondale Park

The locations identified are based on feedback from residents and key stakeholders who operate in the local area. Feasibility of these locations has been verified by the LWNT and key stakeholders which has led to minor amendments and modifications of the original map. Additional possible locations have also been included after this review. These locations will need to be further reviewed and tested as part of each individual project design process.



Sensory Garden



<https://www.maggies.org/about-us/how-maggies-works-for-buildings/>

DESCRIPTION

A sensory garden is a space with features, surfaces, objects and plants that stimulate people's senses through touch, sight, scent, taste and hearing, and with that they contribute to both physical but also mental health and wellbeing.

A space of this kind can provide an environment of practical and emotional support for residents and can be designed to encourage people to connect with each other, therefore reducing isolation.

OPPORTUNITY MATRIX SCORING

The following table shows further details on the scoring achieved by this project on the Opportunities Matrix.

NEED				ALIGNMENT WITH THE VISION AND CO-BENEFITS					Overall Data Score
Votes from Community Day (aggregated data)	Pins on Opportunities Map (aggregated data)	Comments from all FNV engagement events (aggregated data)	Alignment to Initial Ideas Day 2018 Feedback (assessment) – not used for scoring	Overall Aggregated Data Score	- Education and Economic Development	Health and Wellbeing	Sustainability and Greener Estate	Connected Communities	
5 - High - 6+ Votes 3 - Med - 4 - 6 Votes 1 - Low - 1 - 3 Votes 0 - No Votes	5 - High - 6+ Votes 3 - Med - 4 - 6 Votes 1 - Low - 1 - 3 Votes 0 - No Votes	5 - High - 15+ Comments 3 - Med - 8 - 15 Comments 1 - Low - 1 - 7 Comments 0 - No Comments	High -10+ comments Medium - 6 - 9 Low - 1 - 5 No Comment	Each component evenly weighted - total maximum score of 15 (Auto-calculated)	5 - High - XX 3 - Medium - XX 1 - Low - XX 0 - No Alignment	5 - High - XX 3 - Medium - XX 1 - Low - XX 0 - No Alignment	5 - High - XX 3 - Medium - XX 1 - Low - XX 0 - No Alignment	5 - High - XX 3 - Medium - XX 1 - Low - XX 0 - No Alignment	Each component evenly weighted - total maximum score of 20 (Auto-calculated)
3	1	1	Low	5	3	5	5	3	16
DELIVERABILITY			ALIGNMENT WITH OTHER FUNDING OPPORTUNITIES AND PROJECTS					Overall Score	
Complexity of delivery and management	Expected Timescale of delivery	Overall Score	Degree to which the opportunity aligns with the Future Neighbourhood Programme	Degree to which the opportunity aligns with the Future Neighbourhood Programme	Degree to which the opportunity aligns with other secured funding stream	Degree to which the opportunity aligns with other secured funding stream	Degree to which opportunity is building on existing project		Which project?
High - 1 Medium - 2 Low - 3	Long (3+years) - 1 Medium (2-3 years) - 2 Short (0-1 Years) - 3	Score based on weighting	High Medium Low	Notes	High - 3 Medium - 2 Low - 1	Notes	High - 3 Medium - 2 Low - 1		(Weighted)
2	3	5	High	Proposals for Verity Close garden in future neighbourhoods fund included development of a sensory garden - would still be tbc pending resident engagement	Medium	Lots of GLA funds around green space and access to nature	High	All garden initiatives by LWNT	26

Sensory Garden

STAKEHOLDERS WORKSHOP FEEDBACK

This section summarises feedback received from stakeholders captured during the stakeholders thematic workshop.

What Do You Think?	Challenges	Opportunities
<ul style="list-style-type: none"> No comments. 	<ul style="list-style-type: none"> Indoor location which could connect to a bigger health service space to complement each other. 	<ul style="list-style-type: none"> Link back to the activity trail - diversify what is included along the trail - how it is structured.

Suggested Locations	Anything Missing?
<ul style="list-style-type: none"> Verity Close Playground 	<ul style="list-style-type: none"> provision of spaces in relation to special needs of children / adults need for quieter spaces - but also accessible

The following key themes were identified:

- Provision for residents with special needs
- Need for accessibility
- Potential to link with health service space (eg Service Hub)

Sensory Garden

RESIDENTS FEEDBACK

This section summarises feedback received from residents captured during the engagement events:

- Community Day
- Your Refurb. Your Neighbourhood
- Community Fridge Launch
- Web response

There were 5 comments given by residents during all engagement events that have been tagged against this project as they either relate to the project or the project has the potential to address that specific issue.

The following key themes were identified:

- Need for spaces and services to improve mental health
- Need for more interesting and diverse green spaces

Residents comments

- Mental health (appears twice)
- More interesting green spaces, expand tea garden and planting activity
- More mental health services close to the area
- Wintergarden

Sensory Garden

SUGGESTED LOCATIONS

This map summarises the locations suggested by residents and stakeholders for this project during the opportunity mapping stage.

○ Potential Locations:

- Between Testerton Walk and Barandon Walk
- Verity Close

The locations identified are based on feedback from residents and key stakeholders who operate in the local area. Feasibility of these locations has been verified by the LWNT and key stakeholders which has led to minor amendments and modifications of the original map. Additional possible locations have also been included after this review. These locations will need to be further reviewed and tested as part of each individual project design process.



Wellbeing Centre



<https://news.rhul.ac.uk/releases/article/191115/university-of-rhul-wellbeing-centre>

DESCRIPTION

A walk in health and wellbeing centre, for both preventative and aftercare mental health support providing a programme of activities (yoga, dancing, etc) and professional advice.

A wellbeing centre can impact positively the lives of residents by providing affordable and convenient health and wellness services and programs delivered by professionals in one location. It can include features such as café, outdoor areas, meditation garden and rooms, massage pods, etc.

OPPORTUNITY MATRIX SCORING

The following table shows further details on the scoring achieved by this project on the Opportunities Matrix.

NEED				ALIGNMENT WITH THE VISION AND CO-BENEFITS					
Votes from Community Day (aggregated data)	Pins on Opportunities Map (aggregated data)	Comments from all FNV engagement events (aggregated data)	Alignment to Initial Ideas Day 2018 Feedback (assessment) – not used for scoring	Overall Aggregated Data Score	- Education and Economic Development	Health and Wellbeing	Sustainability and Greener Estate	Connected Communities	Overall Data Score
5 - High - 6+ Votes 3 - Med - 4 - 6 Votes 1 - Low - 1 - 3 Votes 0 - No Votes	5 - High - 6+ Votes 3 - Med - 4 - 6 Votes 1 - Low - 1 - 3 Votes 0 - No Votes	5 - High - 15+ Comments 3 - Med - 8 - 15 Comments 1 - Low - 1 - 7 Comments 0 - No Comments	High -10+ comments Medium - 6 - 9 Low - 1 - 5 No Comment	Each component evenly weighted - total maximum score of 15 (Auto-calculated)	5 - High - XX 3 - Medium - XX 1 - Low - XX 0 - No Alignment	5 - High - XX 3 - Medium - XX 1 - Low - XX 0 - No Alignment	5 - High - XX 3 - Medium - XX 1 - Low - XX 0 - No Alignment	5 - High - XX 3 - Medium - XX 1 - Low - XX 0 - No Alignment	Each component evenly weighted - total maximum score of 20 (Auto-calculated)
3	3	5	No Comments	11	3	5	0	5	13
DELIVERABILITY			ALIGNMENT WITH OTHER FUNDING OPPORTUNITIES AND PROJECTS						
Complexity of delivery and management	Expected Timescale of delivery	Overall Score	Degree to which the opportunity aligns with the Future Neighbourhood Programme	Degree to which the opportunity aligns with the Future Neighbourhood Programme	Degree to which the opportunity aligns with other secured funding stream	Degree to which the opportunity aligns with other secured funding stream	Degree to which opportunity is building on existing project	Which project?	Overall Score
High - 1 Medium - 2 Low - 3	Long (3+years) - 1 Medium (2-3 years) - 2 Short (0-1 Years) - 3	Score based on weighting	High Medium Low	Notes	High - 3 Medium - 2 Low - 1	Notes	High - 3 Medium - 2 Low - 1		(Weighted)
1	1	2	Low		Medium	NHS has potential funding for a proposed site at Foreland Medical Centre	High	Yoga, Massages at resource centre	26

Wellbeing Centre

STAKEHOLDERS WORKSHOP FEEDBACK

This section summarises feedback received from stakeholders captured during the stakeholders thematic workshop.

What Do You Think?	Challenges	Opportunities
<ul style="list-style-type: none"> Sense of inaccessibility from the neighborhood to the Leisure Centre. 	<ul style="list-style-type: none"> It is key that the social prescribing aspect is included - link in with activity in the borough / Child and social care should be included Cost and space might be a challenge Resident card available has not had a great take up - needs wider communication and better understanding of barriers 	<ul style="list-style-type: none"> Having an Event Day - a weekly session for multipurpose uses to connect Leisure Centre close to the Lancaster West Neighbourhood. Maximise the communities uptake of what is there already. Existing Leisure Centre does a significant amount of delivery of service - broad and wide ranging - is there a Bespoke offer for the Neighbourhood?

Suggested Locations	Anything Missing?
<ul style="list-style-type: none"> Walmer Road Clinic Smaller / less busy spaces eg old garage spaces Spaces opening out onto the green between the blocks - combining new services with public spaces 	<ul style="list-style-type: none"> Yoga and massage delivered under Tesserton / Barr - offices managed by RBKC could be delivered here Digital inclusion also important North Kensington Resource Centre

The following key themes were identified:

- Links to existing activities and assets (Leisure Centre) is key
- Some challenges identified by stakeholders around costs, space needs, communication and engagement, and making sure social and child care is included

Wellbeing Centre

RESIDENTS FEEDBACK

This section summarises feedback received from residents captured during the engagement events:

- Community Day
- Your Refurb. Your Neighbourhood
- Community Fridge Launch
- Web response

There were 16 comments given by residents during all engagement events that have been tagged against this project as they either relate to the project or the project has the potential to address that specific issue.

The following key themes were identified:

- Need for walk-in, quicker health checks
- Improve and increase amount of services in the area
- Facilities for vulnerable groups, focus on women
- Integrated with activities eg Yoga, Swimming

Residents comments

- Antisocial behaviours, safe community
- Counselling hub walk in - the curve or bay 20
- Health checks at the curve, why is it closing? There is a huge need
- improve GP service in the area to help vulnerable people
- Mental health
- More mental health services close to the area
- more support to understand services for people with disabilities
- More wellbeing facility for women
- Paint and medical centre so the wall is no longer depressing grey!
- Quicker health services
- swimming
- wellbeing centre
- Women only health and wellbeing programmes
- Yoga class, meditation class
- Yoga for mothers and children's

Wellbeing Centre

SUGGESTED LOCATIONS

This map summarises the locations suggested by residents and stakeholders for this project during the opportunity mapping stage.

○ Potential Locations:

- Kensington Leisure Centre
- Walmer Road
- Bomore Road

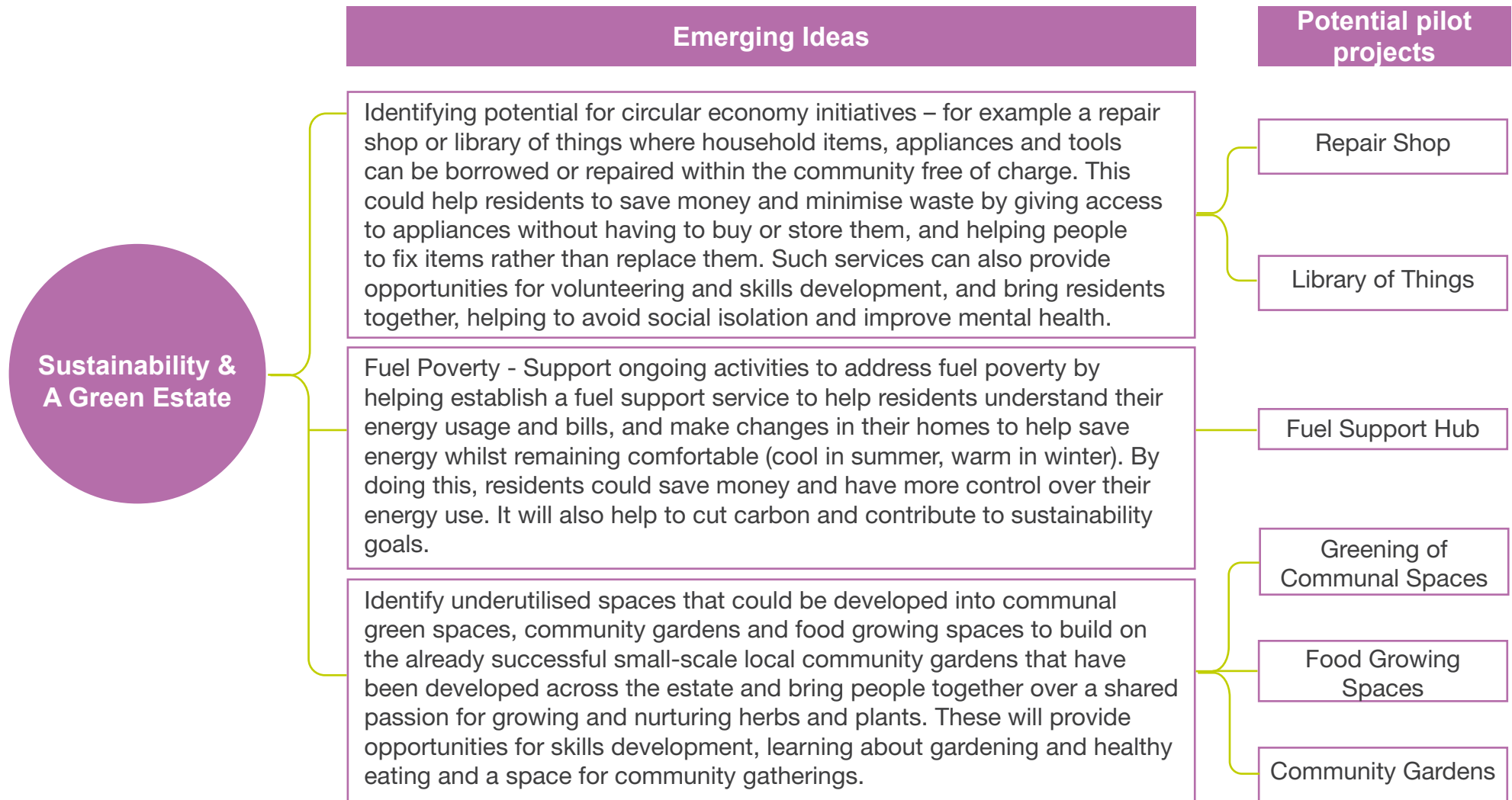
The locations identified are based on feedback from residents and key stakeholders who operate in the local area. Feasibility of these locations has been verified by the LWNT and key stakeholders which has led to minor amendments and modifications of the original map. Additional possible locations have also been included after this review. These locations will need to be further reviewed and tested as part of each individual project design process.





Sustainability and Green Estate

Sustainability & A Green Estate



Repair Shop



<https://www.thegoodlifecentre.co.uk/community-repair-events/>

DESCRIPTION

A space where household items, appliances and tools can be repaired within the community free of charge.

A repair shop has opportunities for skills development, capacity building and training. It promotes inclusion and social exchange, contributing in this way to reducing social isolation, and it promotes re-use and repair over buying new, reducing material and resource exploitation and waste.

OPPORTUNITY MATRIX SCORING

The following table shows further details on the scoring achieved by this project on the Opportunities Matrix.

NEED				ALIGNMENT WITH THE VISION AND CO-BENEFITS					
Votes from Community Day (aggregated data)	Pins on Opportunities Map (aggregated data)	Comments from all FNV engagement events (aggregated data)	Alignment to Initial Ideas Day 2018 Feedback (assessment) – not used for scoring	Overall Aggregated Data Score	- Education and Economic Development	Health and Wellbeing	Sustainability and Greener Estate	Connected Communities	Overall Data Score
5 - High - 6+ Votes 3 - Med - 4 - 6 Votes 1 - Low - 1 - 3 Votes 0 - No Votes	5 - High - 6+ Votes 3 - Med - 4 - 6 Votes 1 - Low - 1 - 3 Votes 0 - No Votes	5 - High - 15+ Comments 3 - Med - 8 - 15 Comments 1 - Low - 1 - 7 Comments 0 - No Comments	High -10+ comments Medium - 6 - 9 Low - 1 - 5 No Comment	Each component evenly weighted - total maximum score of 15 (Auto-calculated)	5 - High - XX 3 - Medium - XX 1 - Low - XX 0 - No Alignment	5 - High - XX 3 - Medium - XX 1 - Low - XX 0 - No Alignment	5 - High - XX 3 - Medium - XX 1 - Low - XX 0 - No Alignment	5 - High - XX 3 - Medium - XX 1 - Low - XX 0 - No Alignment	Each component evenly weighted - total maximum score of 20 (Auto-calculated)
5	3	1	No Comments	9	3	1	5	1	10
DELIVERABILITY			ALIGNMENT WITH OTHER FUNDING OPPORTUNITIES AND PROJECTS						
Complexity of delivery and management	Expected Timescale of delivery	Overall Score	Degree to which the opportunity aligns with the Future Neighbourhood Programme	Degree to which the opportunity aligns with the Future Neighbourhood Programme	Degree to which the opportunity aligns with other secured funding stream	Degree to which the opportunity aligns with other secured funding stream	Degree to which opportunity is building on existing project	Which project?	Overall Score
High - 1 Medium - 2 Low - 3	Long (3+years) - 1 Medium (2-3 years) - 2 Short (0-1 Years) - 3	Score based on weighting	High Medium Low	Notes	High - 3 Medium - 2 Low - 1	Notes	High - 3 Medium - 2 Low - 1		(Weighted)
2	3	5	High	Funding for pop-up repairs shops including at NKRC	Medium	Repairs workshops already planned, based in Dalgarno - could potentially tap in here	Medium	Repair team	24

Repair Shop

STAKEHOLDERS WORKSHOP FEEDBACK

This section summarises feedback received from stakeholders captured during the stakeholders thematic workshop.

What Do You Think?	Challenges	Opportunities
<ul style="list-style-type: none"> Really like this idea, something that I think would bring the community together. 	<ul style="list-style-type: none"> Need to look at demand from other sites, test demand through a pilot. 	<ul style="list-style-type: none"> Can this be combined with the Library of Things and the Fuel Support Hub, to create a one stop sustainability shop? It might need a more catchy name!

Suggested Locations	Anything Missing?
<ul style="list-style-type: none"> RBKC waste team are looking at doing some pop-up repairs shops around North Ken, so worth linking in with this but wouldn't want to duplicate 	<ul style="list-style-type: none"> There is someone in the area who has trained to do this one, so could be a relatively quick win. I'm not sure of the demand though? could be home repairs rather than shop - extension of handiman service - skills exchange, networking people I'd be keen to know the demand/activity of this sort of thing from other areas refer to up cycling to generate more interest

The following key themes were identified:

- Potential to be a quick win project to be implemented in the short term.
- Some challenges identified by stakeholders around checking actual demand for this service and making sure it is not duplicating existing initiatives.

Repair Shop

RESIDENTS FEEDBACK

This section summarises feedback received from residents captured during the engagement events:

- Community Day
- Your Refurb. Your Neighbourhood
- Community Fridge Launch
- Web response

There were 4 comments given by residents during all engagement events that have been tagged against this project as they either relate to the project or the project has the potential to address that specific issue.

The following key themes were identified:

- Potential for integrating with other uses (recycling, donation collection, library of things)

Residents comments

- clothing household recycling
- donation points regular collection
- Repair Shop
- Repair shop and library things could go together

Repair Shop

SUGGESTED LOCATIONS

This map summarises the locations suggested by residents and stakeholders for this project during the opportunity mapping stage.

○ Potential Locations:

- Barandon Walk
- North Kensington Resource Centre
- Clarendon Walk Safe Store

The locations identified are based on feedback from residents and key stakeholders who operate in the local area. Feasibility of these locations has been verified by the LWNT and key stakeholders which has led to minor amendments and modifications of the original map. Additional possible locations have also been included after this review. These locations will need to be further reviewed and tested as part of each individual project design process.



- Sustainability and a Green_Estate
- 1. Repair shop
- 2. Library of things
- 3. Fuel support hub
- 4. Greening of communal space
- 5. Community garden
- 6. Food growing space

Library of Things



<https://www.trowbridgegardens.com/blog/the-library-of-things>

DESCRIPTION

A library of things where household items, appliances and tools can be borrowed within the community free of charge.

This service could help residents save money and reduce waste by affordably renting out useful things available from local spaces.

It can also be a place to learn new skills like DIY and repair.

OPPORTUNITY MATRIX SCORING

The following table shows further details on the scoring achieved by this project on the Opportunities Matrix.

NEED				ALIGNMENT WITH THE VISION AND CO-BENEFITS					
Votes from Community Day (aggregated data)	Pins on Opportunities Map (aggregated data)	Comments from all FNV engagement events (aggregated data)	Alignment to Initial Ideas Day 2018 Feedback (assessment) – not used for scoring	Overall Aggregated Data Score	- Education and Economic Development	Health and Wellbeing	Sustainability and Greener Estate	Connected Communities	Overall Data Score
5 - High - 6+ Votes 3 - Med - 4 - 6 Votes 1 - Low - 1 - 3 Votes 0 - No Votes	5 - High - 6+ Votes 3 - Med - 4 - 6 Votes 1 - Low - 1 - 3 Votes 0 - No Votes	5 - High - 15+ Comments 3 - Med - 8 - 15 Comments 1 - Low - 1 - 7 Comments 0 - No Comments	High -10+ comments Medium - 6 - 9 Low - 1 - 5 No Comment	Each component evenly weighted - total maximum score of 15 (Auto-calculated)	5 - High - XX 3 - Medium - XX 1 - Low - XX 0 - No Alignment	5 - High - XX 3 - Medium - XX 1 - Low - XX 0 - No Alignment	5 - High - XX 3 - Medium - XX 1 - Low - XX 0 - No Alignment	5 - High - XX 3 - Medium - XX 1 - Low - XX 0 - No Alignment	Each component evenly weighted - total maximum score of 20 (Auto-calculated)
5	5	1	No Comments	11	1	1	5	1	8
DELIVERABILITY			ALIGNMENT WITH OTHER FUNDING OPPORTUNITIES AND PROJECTS						
Complexity of delivery and management	Expected Timescale of delivery	Overall Score	Degree to which the opportunity aligns with the Future Neighbourhood Programme	Degree to which the opportunity aligns with the Future Neighbourhood Programme	Degree to which the opportunity aligns with other secured funding stream	Degree to which the opportunity aligns with other secured funding stream	Degree to which opportunity is building on existing project	Which project?	Overall Score
High - 1 Medium - 2 Low - 3	Long (3+years) - 1 Medium (2-3 years) - 2 Short (0-1 Years) - 3	Score based on weighting	High Medium Low	Notes	High - 3 Medium - 2 Low - 1	Notes	High - 3 Medium - 2 Low - 1		(Weighted)
3	3	6	High	Library of things planned for North Ken library	Medium	Potential for small community grants to create a similar small-scale model on LWE	Medium	link to NKRC as other services already there - eg community fridge	25

Library of Things

STAKEHOLDERS WORKSHOP FEEDBACK

This section summarises feedback received from stakeholders captured during the stakeholders thematic workshop.

What Do You Think?	Challenges	Opportunities
<ul style="list-style-type: none"> No comments 	<ul style="list-style-type: none"> name - don't call it a 'library' 	<ul style="list-style-type: none"> No comments

Suggested Locations	Anything Missing?
<ul style="list-style-type: none"> NKRC - link to RKRC as other services already there - community fridge etc Locations should be accessible for everyone in Notting Dale not just LW residents location could be front of Baseline or Clarendon stores Library of Things (NKRC) 	<ul style="list-style-type: none"> location needs to be accessible to all Very good idea - fills a gap as I don't think we have one in the area make sure items are A-rated and link to behaviour change will people be happy to travel to north ken? here is already a library of things planned for North Ken library - this is a paid model though structure-wise - could library at LW be offshoot of North Ken or separate? what would be best for people? explore non-paying structure with deposit but free to borrow items?

The following key themes were identified:

- Accessibility for the wider area and not just Lancaster West residents is key
- Potential to link with existing services and initiatives or become part of them (eg an offshoot of the planned North Kensington Library of Things)

Library of Things

RESIDENTS FEEDBACK

This section summarises feedback received from residents captured during the engagement events:

- Community Day
- Your Refurb. Your Neighbourhood
- Community Fridge Launch
- Web response

There were 3 comments given by residents during all engagement events that have been tagged against this project as they either relate to the project or the project has the potential to address that specific issue.

The following key themes were identified:

- Potential for integrating with other uses (recycling, donation collection, repair shop)

Residents comments

- clothing household recycling
- donation points regular collection
- Repair shop and library things could go together

Library of Things

SUGGESTED LOCATIONS

This map summarises the locations suggested by residents and stakeholders for this project during the opportunity mapping stage.

○ Potential Locations:

- North Kensington Resource Centre
- North Kensington Library

The locations identified are based on feedback from residents and key stakeholders who operate in the local area. Feasibility of these locations has been verified by the LWNT and key stakeholders which has led to minor amendments and modifications of the original map. Additional possible locations have also been included after this review. These locations will need to be further reviewed and tested as part of each individual project design process.



- Sustainability and a Green_Estate
- 1. Repair shop
- 2. Library of things
- 3. Fuel support hub
- 4. Greening of communal space
- 5. Community garden
- 6. Food growing space

Fuel Support Hub



<https://helpovertyresources.org.uk/resources/resources-8-and-9>

DESCRIPTION

A fuel support service to help residents understand their energy usage and bills, and make changes in their homes to help save energy whilst remaining comfortable (cool in summer, warm in winter). By doing this, residents could save money and have more control over their energy use. It will also help to cut carbon and contribute to sustainability goals.

OPPORTUNITY MATRIX SCORING

The following table shows further details on the scoring achieved by this project on the Opportunities Matrix.

NEED				ALIGNMENT WITH THE VISION AND CO-BENEFITS					Overall Data Score
Votes from Community Day (aggregated data)	Pins on Opportunities Map (aggregated data)	Comments from all FNV engagement events (aggregated data)	Alignment to Initial Ideas Day 2018 Feedback (assessment) – not used for scoring	Overall Aggregated Data Score	- Education and Economic Development	Health and Wellbeing	Sustainability and Greener Estate	Connected Communities	
5 - High - 6+ Votes 3 - Med - 4 - 6 Votes 1 - Low - 1 - 3 Votes 0 - No Votes	5 - High - 6+ Votes 3 - Med - 4 - 6 Votes 1 - Low - 1 - 3 Votes 0 - No Votes	5 - High - 15+ Comments 3 - Med - 8 - 15 Comments 1 - Low - 1 - 7 Comments 0 - No Comments	High -10+ comments Medium - 6 - 9 Low - 1 - 5 No Comment	Each component evenly weighted - total maximum score of 15 (Auto-calculated)	5 - High - XX 3 - Medium - XX 1 - Low - XX 0 - No Alignment	5 - High - XX 3 - Medium - XX 1 - Low - XX 0 - No Alignment	5 - High - XX 3 - Medium - XX 1 - Low - XX 0 - No Alignment	5 - High - XX 3 - Medium - XX 1 - Low - XX 0 - No Alignment	Each component evenly weighted - total maximum score of 20 (Auto-calculated)
3	1	0	No Comments	4	3	3	5	3	14
DELIVERABILITY			ALIGNMENT WITH OTHER FUNDING OPPORTUNITIES AND PROJECTS					Overall Score	
Complexity of delivery and management	Expected Timescale of delivery	Overall Score	Degree to which the opportunity aligns with the Future Neighbourhood Programme	Degree to which the opportunity aligns with the Future Neighbourhood Programme	Degree to which the opportunity aligns with other secured funding stream	Degree to which the opportunity aligns with other secured funding stream	Degree to which opportunity is building on existing project		Which project?
High - 1 Medium - 2 Low - 3	Long (3+years) - 1 Medium (2-3 years) - 2 Short (0-1 Years) - 3	Score based on weighting	High Medium Low	Notes	High - 3 Medium - 2 Low - 1	Notes	High - 3 Medium - 2 Low - 1		(Weighted)
2	3	5	High	Funding for residents to access energy advice + NEA energy advice training	High	Some scope within SHDF funding to provide energy advice & training Housing Advisor DULAC (through OPE) - 20k already secured	High	Notting Dale Heat Network, Green Doctors and other initiatives	23

Fuel Support Hub

STAKEHOLDERS WORKSHOP FEEDBACK

This section summarises feedback received from stakeholders captured during the stakeholders thematic workshop.

What Do You Think?	Challenges	Opportunities
<ul style="list-style-type: none"> No comments 	<ul style="list-style-type: none"> Lots already going on - have to be careful to align not duplicate. 	<ul style="list-style-type: none"> This would be a really useful customer facing facility for the Notting Dale Heat Network that could offer practical onboarding advice, technical support and practical advice on how to save money, energy and carbon. It could support a local Sustainability and Fuel Poverty Service, with debt advice, Green Doctors and info on how to maximise Benefits It would be good for this to be resident-led if possible, so providing a job and training opportunity to someone living on LWE North Kensington Community Energy is planning to develop a community owned energy scheme on a social housing in North Ken. Fuel poverty will be part of scheme so referrals could be sent to the hub An opportunity to connect to sustainability themes and show how initiatives deliver against those things

Suggested Locations	Anything Missing?
<ul style="list-style-type: none"> No comments 	<ul style="list-style-type: none"> What kit is needed in order to measure the before and after? The Council is already delivering the Green Doctors and the fuel poverty programme so these initiatives need to be joined up make this part of something else - sustainability hub not stand alone

The following key themes were identified:

- Potential to link with existing services and initiatives
- Seek for alignment, not duplication
- Potential to integrate with other uses (not stand-alone)

RESIDENTS FEEDBACK

No comments were received from residents during the engagement events that can be tagged against this project.

Fuel Support Hub

SUGGESTED LOCATIONS

This map summarises the locations suggested by residents and stakeholders for this project during the opportunity mapping stage.

○ Potential Locations:

- North Kensington Resource Centre
- Baseline Studios

The locations identified are based on feedback from residents and key stakeholders who operate in the local area. Feasibility of these locations has been verified by the LWNT and key stakeholders which has led to minor amendments and modifications of the original map. Additional possible locations have also been included after this review. These locations will need to be further reviewed and tested as part of each individual project design process.



- Sustainability and a Green_Estate
- 1. Repair shop
- 2. Library of things
- 3. Fuel support hub
- 4. Greening of communal space
- 5. Community garden
- 6. Food growing space

Greening of Communal Spaces



<https://www.measuringup.com/project/sensor/garden-magnifier/>

DESCRIPTION

Greening of spaces can contribute to improving health and wellbeing of users by increasing access to nature and contributing to improvements in local air quality.

Increasing green and wildlife connectivity spaces can enhance biodiversity and ecological connectivity of place.

A Greener Estate will raise awareness on sustainability and promote the benefits of green infrastructure to inspire others.

OPPORTUNITY MATRIX SCORING

The following table shows further details on the scoring achieved by this project on the Opportunities Matrix.

NEED				ALIGNMENT WITH THE VISION AND CO-BENEFITS					
Votes from Community Day (aggregated data)	Pins on Opportunities Map (aggregated data)	Comments from all FNV engagement events (aggregated data)	Alignment to Initial Ideas Day 2018 Feedback (assessment) – not used for scoring	Overall Aggregated Data Score	- Education and Economic Development	Health and Wellbeing	Sustainability and Greener Estate	Connected Communities	Overall Data Score
5 - High - 6+ Votes 3 - Med - 4 - 6 Votes 1 - Low - 1 - 3 Votes 0 - No Votes	5 - High - 6+ Votes 3 - Med - 4 - 6 Votes 1 - Low - 1 - 3 Votes 0 - No Votes	5 - High - 15+ Comments 3 - Med - 8 - 15 Comments 1 - Low - 1 - 7 Comments 0 - No Comments	High -10+ comments Medium - 6 - 9 Low - 1 - 5 No Comment	Each component evenly weighted - total maximum score of 15 (Auto-calculated)	5 - High - XX 3 - Medium - XX 1 - Low - XX 0 - No Alignment	5 - High - XX 3 - Medium - XX 1 - Low - XX 0 - No Alignment	5 - High - XX 3 - Medium - XX 1 - Low - XX 0 - No Alignment	5 - High - XX 3 - Medium - XX 1 - Low - XX 0 - No Alignment	Each component evenly weighted - total maximum score of 20 (Auto-calculated)
5	1	3	High	9	1	5	5	3	14
DELIVERABILITY			ALIGNMENT WITH OTHER FUNDING OPPORTUNITIES AND PROJECTS						
Complexity of delivery and management	Expected Timescale of delivery	Overall Score	Degree to which the opportunity aligns with the Future Neighbourhood Programme	Degree to which the opportunity aligns with the Future Neighbourhood Programme	Degree to which the opportunity aligns with other secured funding stream	Degree to which the opportunity aligns with other secured funding stream	Degree to which opportunity is building on existing project	Which project?	Overall Score
High - 1 Medium - 2 Low - 3	Long (3+years) - 1 Medium (2-3 years) - 2 Short (0-1 Years) - 3	Score based on weighting	High Medium Low	Notes	High - 3 Medium - 2 Low - 1	Notes	High - 3 Medium - 2 Low - 1		(Weighted)
2	3	5	High	Funding for Treadgold & Verity garden spaces including potential wildlife gardens. Also working on wildlife garden in Avondale Park	High	Com Dev also bidding for funding for Verity & Treadgold garden spaces, and delivering other projects eg Camelford	High	All garden initiatives by LWNT	28

Greening of Communal Spaces

STAKEHOLDERS WORKSHOP FEEDBACK

This section summarises feedback received from stakeholders captured during the stakeholders thematic workshop.

What Do You Think?	Challenges	Opportunities
<ul style="list-style-type: none"> This is happening anyway 	<ul style="list-style-type: none"> No comments 	<ul style="list-style-type: none"> No comments

Suggested Locations	Anything Missing?
<ul style="list-style-type: none"> No comments 	<ul style="list-style-type: none"> We need to map out our garden spaces

The following key themes were identified:

- Initiatives already in place
- Need to map existing garden spaces

Greening of Communal Spaces

RESIDENTS FEEDBACK

This section summarises feedback received from residents captured during the engagement events:

- Community Day
- Your Refurb. Your Neighbourhood
- Community Fridge Launch
- Web response

There were 11 comments given by residents during all engagement events that have been tagged against this project as they either relate to the project or the project has the potential to address that specific issue.

The following key themes were identified:

- Residents support on having more green spaces and improving existing ones
- Desire to increase planting activities and gardening

Residents comments

- Check garden project of remembrance (Marsia)
- composting
- improve air quality
- Less litter more green
- More cycling path
- more green spaces
- More interesting green spaces, expand tea garden and planting activity
- More planting, more green, more professional gardeners
- Plants stolen, broken- needs separation and separate space for sitting
- The green area of the walkways needs to be more vibrant for family/residents.
- update parks in the area

Greening of Communal Spaces

SUGGESTED LOCATIONS

This map summarises the locations suggested by residents and stakeholders for this project during the opportunity mapping stage.

○ Potential Locations:

- Between Barandon Walk and Grenfell Rd
- Bomore Road
- Verity Close
- Grenfell Walk
- Lancaster Green
- Upper & Lower Camelford

The locations identified are based on feedback from residents and key stakeholders who operate in the local area. Feasibility of these locations has been verified by the LWNT and key stakeholders which has led to minor amendments and modifications of the original map. Additional possible locations have also been included after this review. These locations will need to be further reviewed and tested as part of each individual project design process.



- Sustainability and a Green_Estate
- 1. Repair shop
- 2. Library of things
- 3. Fuel support hub
- 4. Greening of communal space
- 5. Community garden
- 6. Food growing space

Community Gardens



<http://www.brunswickcc.co.uk/community-resilience/pensioners->

DESCRIPTION

More community gardens building on the already successful small-scale initiatives can increase the local community's appreciation and usage of their local green spaces to help counterbalance environmental impacts caused by urbanisation and move towards becoming an eco-neighbourhood.

Community gardens can promote cohesion by bringing people together for group activities in shared settings and including initiatives targeted at vulnerable groups.

OPPORTUNITY MATRIX SCORING

The following table shows further details on the scoring achieved by this project on the Opportunities Matrix.

NEED				ALIGNMENT WITH THE VISION AND CO-BENEFITS					
Votes from Community Day (aggregated data)	Pins on Opportunities Map (aggregated data)	Comments from all FNV engagement events (aggregated data)	Alignment to Initial Ideas Day 2018 Feedback (assessment) – not used for scoring	Overall Aggregated Data Score	- Education and Economic Development	Health and Wellbeing	Sustainability and Greener Estate	Connected Communities	Overall Data Score
5 - High - 6+ Votes 3 - Med - 4 - 6 Votes 1 - Low - 1 - 3 Votes 0 - No Votes	5 - High - 6+ Votes 3 - Med - 4 - 6 Votes 1 - Low - 1 - 3 Votes 0 - No Votes	5 - High - 15+ Comments 3 - Med - 8 - 15 Comments 1 - Low - 1 - 7 Comments 0 - No Comments	High -10+ comments Medium - 6 - 9 Low - 1 - 5 No Comment	Each component evenly weighted - total maximum score of 15 (Auto-calculated)	5 - High - XX 3 - Medium - XX 1 - Low - XX 0 - No Alignment	5 - High - XX 3 - Medium - XX 1 - Low - XX 0 - No Alignment	5 - High - XX 3 - Medium - XX 1 - Low - XX 0 - No Alignment	5 - High - XX 3 - Medium - XX 1 - Low - XX 0 - No Alignment	Each component evenly weighted - total maximum score of 20 (Auto-calculated)
5	1	3	High	9	1	5	5	3	14
DELIVERABILITY			ALIGNMENT WITH OTHER FUNDING OPPORTUNITIES AND PROJECTS						
Complexity of delivery and management	Expected Timescale of delivery	Overall Score	Degree to which the opportunity aligns with the Future Neighbourhood Programme	Degree to which the opportunity aligns with the Future Neighbourhood Programme	Degree to which the opportunity aligns with other secured funding stream	Degree to which the opportunity aligns with other secured funding stream	Degree to which opportunity is building on existing project	Which project?	Overall Score
High - 1 Medium - 2 Low - 3	Long (3+years) - 1 Medium (2-3 years) - 2 Short (0-1 Years) - 3	Score based on weighting	High Medium Low	Notes	High - 3 Medium - 2 Low - 1	Notes	High - 3 Medium - 2 Low - 1		(Weighted)
3	3	6	High	Funding for Treadgold & Verity garden spaces	High	Com Dev also bidding for funding for Verity & Treadgold garden spaces, and delivering other projects eg Camelford	High	All garden initiatives by LWNT	29

Community Gardens

STAKEHOLDERS WORKSHOP FEEDBACK

This section summarises feedback received from stakeholders captured during the stakeholders thematic workshop.

What Do You Think?	Challenges	Opportunities
<ul style="list-style-type: none">• This came out of the Avondale Park consultation.• Already happening.	<ul style="list-style-type: none">• No comments.	<ul style="list-style-type: none">• No comments.

Suggested Locations	Anything Missing?
<ul style="list-style-type: none">• No comments.	<ul style="list-style-type: none">• No comments.

The following key themes were identified:

- Initiative already happening on the estate.

Community Gardens

RESIDENTS FEEDBACK

This section summarises feedback received from residents captured during the engagement events:

- Community Day
- Your Refurb. Your Neighbourhood
- Community Fridge Launch
- Web response

There were 12 comments given by residents during all engagement events that have been tagged against this project as they either relate to the project or the project has the potential to address that specific issue.

The following key themes were identified:

- Need for involvement of the community
- Support for more green spaces and improvement of existing ones
- Multigenerational (kids, youth, families, community)

Residents comments

- Bringing the community together and participating as one
- Community space. Bringing community together
- composting
- Gardening workshops for kids
- improve air quality
- In the tea garden have some birds or animals
- Kids, youth club and community involvement.
- More interesting green spaces, expand tea garden and planting activity
- More planting, more green, more professional gardeners
- tea garden expansion
- The green area of the walkways needs to be more vibrant for family/residents.
- update parks in the area

Community Gardens

SUGGESTED LOCATIONS

This map summarises the locations suggested by residents and stakeholders for this project during the opportunity mapping stage.

○ Potential Locations:

- Between Hurstway Walk and Testerton Walk
- North Kensington Resource Centre
- Talbot Grove House
- Grenfell Walk
- Verity Close
- Upper & Lower Camelford
- Treadgold House

The locations identified are based on feedback from residents and key stakeholders who operate in the local area. Feasibility of these locations has been verified by the LWNT and key stakeholders which has led to minor amendments and modifications of the original map. Additional possible locations have also been included after this review. These locations will need to be further reviewed and tested as part of each individual project design process.



- Sustainability and a Green_Estate
- 1. Repair shop
- 2. Library of things
- 3. Fuel support hub
- 4. Greening of communal space
- 5. Community garden
- 6. Food growing space

Food Growing Spaces



[https://www.theguardian.com/cities/2015/jul/09/urban-farmers-](https://www.theguardian.com/cities/2015/jul/09/urban-farmers)

DESCRIPTION

Having communal spaces for residents to grow their own food has the potential to engage people in hands-on, outdoor-based learning, linking food growing to healthy eating, helping people of all ages learn about and access fresh produce, and gain skills critical to a healthy lifestyle.

Underused or disused sites such as rooftops, or spaces within community assets can become food growing spaces for residents to use and enjoy.

OPPORTUNITY MATRIX SCORING

The following table shows further details on the scoring achieved by this project on the Opportunities Matrix.

NEED				ALIGNMENT WITH THE VISION AND CO-BENEFITS					
Votes from Community Day (aggregated data)	Pins on Opportunities Map (aggregated data)	Comments from all FNV engagement events (aggregated data)	Alignment to Initial Ideas Day 2018 Feedback (assessment) – not used for scoring	Overall Aggregated Data Score	- Education and Economic Development	Health and Wellbeing	Sustainability and Greener Estate	Connected Communities	Overall Data Score
5 - High - 6+ Votes 3 - Med - 4 - 6 Votes 1 - Low - 1 - 3 Votes 0 - No Votes	5 - High - 6+ Votes 3 - Med - 4 - 6 Votes 1 - Low - 1 - 3 Votes 0 - No Votes	5 - High - 15+ Comments 3 - Med - 8 - 15 Comments 1 - Low - 1 - 7 Comments 0 - No Comments	High -10+ comments Medium - 6 - 9 Low - 1 - 5 No Comment	Each component evenly weighted - total maximum score of 15 (Auto-calculated)	5 - High - XX 3 - Medium - XX 1 - Low - XX 0 - No Alignment	5 - High - XX 3 - Medium - XX 1 - Low - XX 0 - No Alignment	5 - High - XX 3 - Medium - XX 1 - Low - XX 0 - No Alignment	5 - High - XX 3 - Medium - XX 1 - Low - XX 0 - No Alignment	Each component evenly weighted - total maximum score of 20 (Auto-calculated)
5	1	1	High	7	3	5	5	3	16
DELIVERABILITY			ALIGNMENT WITH OTHER FUNDING OPPORTUNITIES AND PROJECTS						
Complexity of delivery and management	Expected Timescale of delivery	Overall Score	Degree to which the opportunity aligns with the Future Neighbourhood Programme	Degree to which the opportunity aligns with the Future Neighbourhood Programme	Degree to which the opportunity aligns with other secured funding stream	Degree to which the opportunity aligns with other secured funding stream	Degree to which opportunity is building on existing project	Which project?	Overall Score
High - 1 Medium - 2 Low - 3	Long (3+years) - 1 Medium (2-3 years) - 2 Short (0-1 Years) - 3	Score based on weighting	High Medium Low	Notes	High - 3 Medium - 2 Low - 1	Notes	High - 3 Medium - 2 Low - 1		(Weighted)
2	3	5	Medium	£50k funding for Treadgold & Verity garden spaces - could include this if requested. Funding for community kitchen gardens but off of LWE	High	Work underway for new food growing spaces with Hubbub	High	Community kitchen gardeners, Growing kits and other LWNT initiatives	28

Food Growing Spaces

STAKEHOLDERS WORKSHOP FEEDBACK

This section summarises feedback received from stakeholders captured during the stakeholders thematic workshop.

What Do You Think?	Challenges	Opportunities
<ul style="list-style-type: none"> Happening anyway 	<ul style="list-style-type: none"> Proximity to buildings needs to be considered given refurbishment Long waiting list and high demand versus space issues Maintenance 	<ul style="list-style-type: none"> Get in touch with the Environment Project Team and the community kitchen gardeners

Suggested Locations	Anything Missing?
<ul style="list-style-type: none"> No comments 	<ul style="list-style-type: none"> No comments

The following key themes were identified:

- Potential to link with existing initiatives
- Some challenges identified by stakeholders around consideration of existing buildings and refurbishment, demand, space needs and maintenance

Food Growing Spaces

RESIDENTS FEEDBACK

This section summarises feedback received from residents captured during the engagement events:

- Community Day
- Your Refurb. Your Neighbourhood
- Community Fridge Launch
- Web response

There were 4 comments given by residents during all engagement events that have been tagged against this project as they either relate to the project or the project has the potential to address that specific issue.

The following key themes were identified:

- Support for increased planting and gardening activities, including allotments
- Composting (sustainability)
- Workshops (education)

Residents comments

- Allotments
- composting
- Gardening workshops for kids
- More planting, more green, more professional gardeners

Food Growing Spaces

SUGGESTED LOCATIONS

This map summarises the locations suggested by residents and stakeholders for this project during the opportunity mapping stage.

○ Potential Locations:

- Between Hurstway Walk and Testerton Walk
- Lower Talbot Walk
- Grenfell Walk
- Verity Close
- Between Morland House and Talbot Grove House
- Upper & Lower Camelford

The locations identified are based on feedback from residents and key stakeholders who operate in the local area. Feasibility of these locations has been verified by the LWNT and key stakeholders which has led to minor amendments and modifications of the original map. Additional possible locations have also been included after this review. These locations will need to be further reviewed and tested as part of each individual project design process.

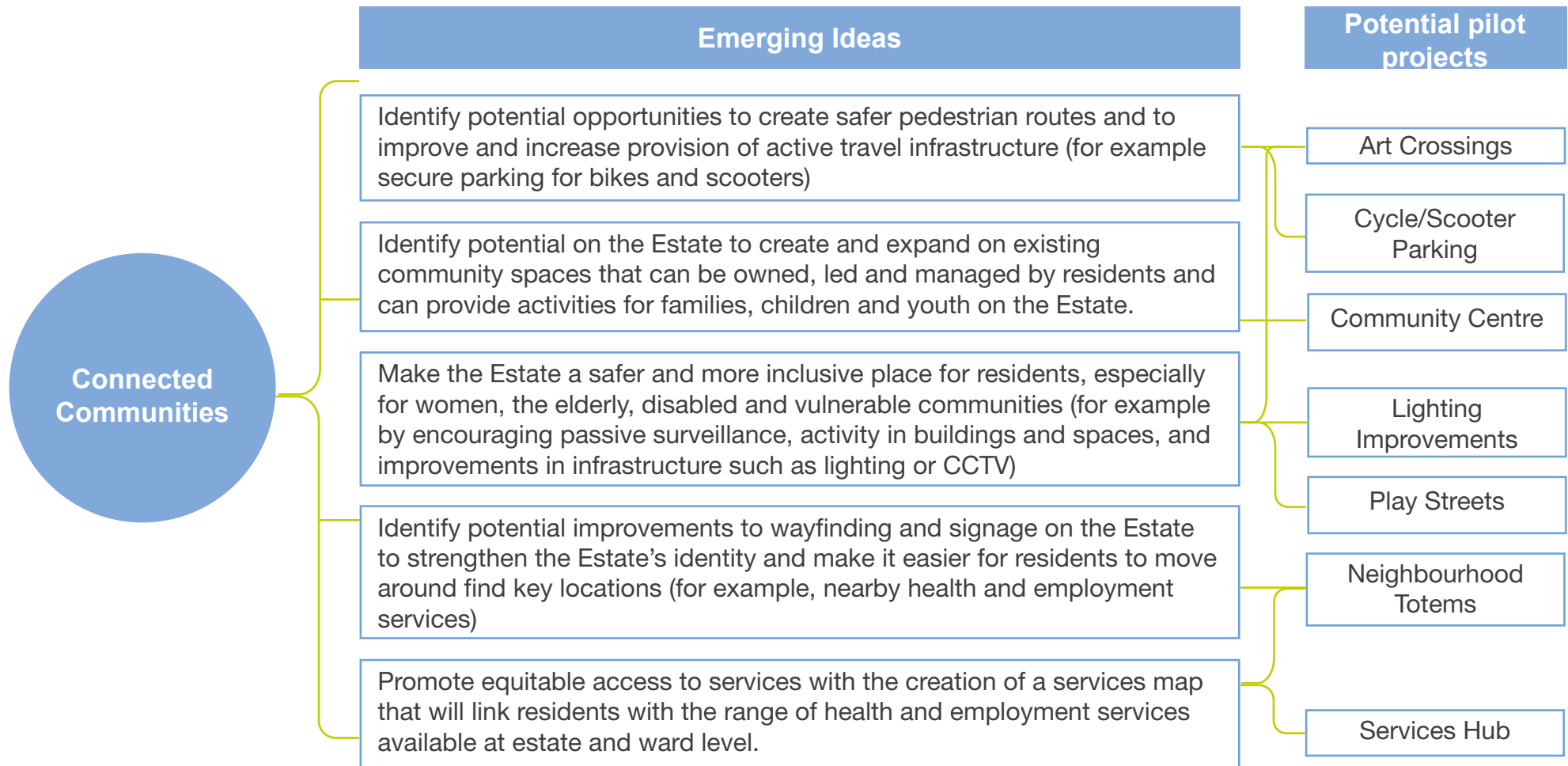


- Sustainability and a Green_Estate
- 1. Repair shop
- 2. Library of things
- 3. Fuel support hub
- 4. Greening of communal space
- 5. Community garden
- 6. Food growing space



Connected Communities

Connected Communities



Art Crossings



<https://www.dezeen.com/2016/09/23/camille-walaia-multicoloured/>

DESCRIPTION

An intervention to create safer crossings and build identity.

As a piece of public art, a crossing has the potential to improve perceptions of the street, including perceptions of safety. By doing so, the wellbeing of those using, working and living on the street is promoted.

It is also a low-cost intervention that can help foster a strong creative identity, encourage pedestrian activity, and improve people’s perception of a place.

OPPORTUNITY MATRIX SCORING

The following table shows further details on the scoring achieved by this project on the Opportunities Matrix.

NEED				ALIGNMENT WITH THE VISION AND CO-BENEFITS					Overall Data Score
Votes from Community Day (aggregated data)	Pins on Opportunities Map (aggregated data)	Comments from all FNV engagement events (aggregated data)	Alignment to Initial Ideas Day 2018 Feedback (assessment) – not used for scoring	Overall Aggregated Data Score	Economic Development	Health and Wellbeing	Sustainability and Greener Estate	Connected Communities	Overall Data Score
5 - High - 6+ Votes 3 - Med - 4 - 6 Votes 1 - Low - 1 - 3 Votes 0 - No Votes	5 - High - 6+ Votes 3 - Med - 4 - 6 Votes 1 - Low - 1 - 3 Votes 0 - No Votes	5 - High - 15+ Comments 3 - Med - 8 - 15 Comments 1 - Low - 1 - 7 Comments 0 - No Comments	High -10+ comments Medium - 6 - 9 Low - 1 - 5 No Comment	Each component evenly weighted - total maximum score of 15 (Auto-calculated)	5 - High - XX 3 - Medium - XX 1 - Low - XX 0 - No Alignment	5 - High - XX 3 - Medium - XX 1 - Low - XX 0 - No Alignment	5 - High - XX 3 - Medium - XX 1 - Low - XX 0 - No Alignment	5 - High - XX 3 - Medium - XX 1 - Low - XX 0 - No Alignment	Each component evenly weighted - total maximum score of 20 (Auto-calculated)
3	3	1	Low	7	0	1	0	5	6
DELIVERABILITY			ALIGNMENT WITH OTHER FUNDING OPPORTUNITIES AND PROJECTS					Overall Score	
Complexity of delivery and management	Expected Timescale of delivery	Overall Score	Degree to which the opportunity aligns with the Future Neighbourhood Programme	Degree to which the opportunity aligns with the Future Neighbourhood Programme	Degree to which the opportunity aligns with other secured funding stream	Degree to which the opportunity aligns with other secured funding stream	Degree to which opportunity is building on existing project	Which project?	Overall Score
High - 1 Medium - 2 Low - 3	Long (3+years) - 1 Medium (2-3 years) - 2 Short (0-1 Years) - 3	Score based on weighting	High Medium Low	Notes	High - 3 Medium - 2 Low - 1	Notes	High - 3 Medium - 2 Low - 1		(Weighted)
2	3	5	Low		Low		Low		18

Art Crossings

STAKEHOLDERS WORKSHOP FEEDBACK

This section summarises feedback received from stakeholders captured during the stakeholders thematic workshop.

What Do You Think?	Challenges	Opportunities
<ul style="list-style-type: none"> • Art crossings are a good idea but need to consider that they are designed to be accessible • It is so good to give pedestrians a bit more support and encouragement • Opportunity to meet specific community needs - LW is a diverse community with language requirements beyond English (main community languages are Farsi, Arabic, Somali and English) 	<ul style="list-style-type: none"> • Maintenance of the crossings and managing any graffiti on the crossings • Ensuring the inclusivity of the design is prioritised and we carry out EQIA reports to ensure they are suitable for elderly people, those with disabilities and visual impairments, neurodiverse residents etc. • reflect need of people's real journeys 	<ul style="list-style-type: none"> • Would provide colour to the estate • local Graffiti artists • Partner with groups such as inclusive city maker to design in inclusivity • An opportunity for young artists to contribute to the local environment

Art Crossings

STAKEHOLDERS WORKSHOP FEEDBACK (CONT.)

This section summarises feedback received from stakeholders captured during the stakeholders thematic workshop.

Suggested Locations	Anything Missing?
<ul style="list-style-type: none">• Ladbroke Grove intersection before station• Good to try and put these near tube stations, bus stops and other pedestrian interchanges (bike racks, etc)• Nice idea - all crossings in and around LWE	<ul style="list-style-type: none">• No comments

The following key themes were identified:

- Some challenges identified by stakeholders around maintenance and antisocial behaviour
- Inclusivity and Accessibility
- Reflecting people's real needs and journeys
- Partner with local groups or artist

Art Crossings

RESIDENTS FEEDBACK

This section summarises feedback received from residents captured during the engagement events:

- Community Day
- Your Refurb. Your Neighbourhood
- Community Fridge Launch
- Web response

There were 3 comments given by residents during all engagement events that have been tagged against this project as they either relate to the project or the project has the potential to address that specific issue.

The following key themes were identified:

- Potential for community art
- A colourful Estate

Residents comments

- More accessibility to the estate
- Some more community art or display, like the post-box tied in a knot
- To see more colourful the Estate

Art Crossings

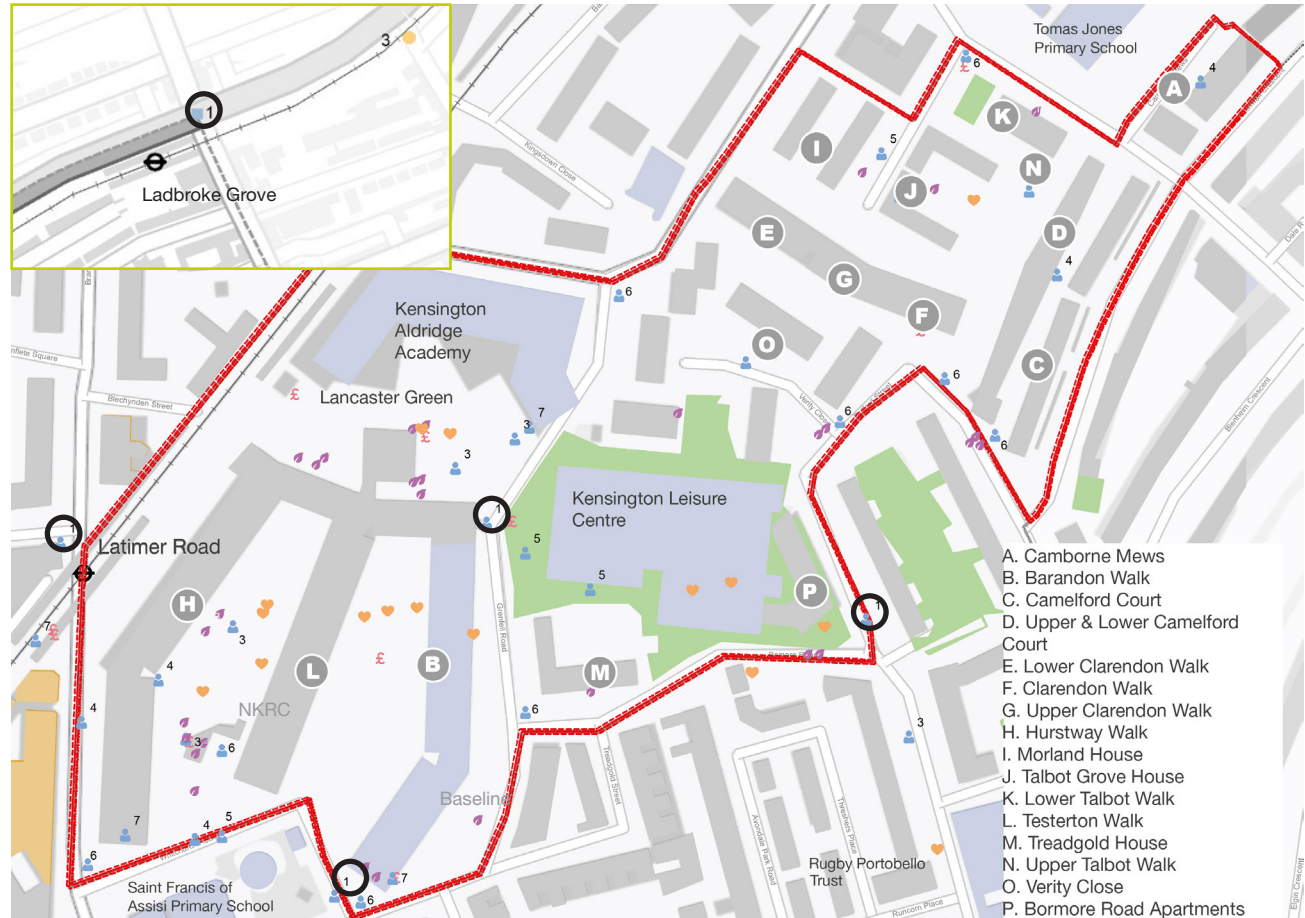
SUGGESTED LOCATIONS

This map summarises the locations suggested by residents and stakeholders for this project during the opportunity mapping stage.

○ Potential Locations:

- Ladbroke Grove station
- Latimer Road
- Whitchurch Rd
- Grenfell Rd
- Walmer Rd

The locations identified are based on feedback from residents and key stakeholders who operate in the local area. Feasibility of these locations has been verified by the LWNT and key stakeholders which has led to minor amendments and modifications of the original map. Additional possible locations have also been included after this review. These locations will need to be further reviewed and tested as part of each individual project design process.



- A. Camborne Mews
- B. Barandon Walk
- C. Camelford Court
- D. Upper & Lower Camelford Court
- E. Lower Clarendon Walk
- F. Clarendon Walk
- G. Upper Clarendon Walk
- H. Hurstway Walk
- I. Morland House
- J. Talbot Grove House
- K. Lower Talbot Walk
- L. Testerton Walk
- M. Treadgold House
- N. Upper Talbot Walk
- O. Verity Close
- P. Bormore Road Apartments

- Connected Communities
1. Art crossings
 2. Cycle and/or scooter parking
 3. Community centre
 4. Lighting improvements
 5. Play street
 6. Neighbourhood Totems
 7. Services Hub

Cycle/Scooter Parking



<https://www.groundcontrolsystems.com/>

DESCRIPTION

Improved and increased provision of active travel infrastructure such as cycle and scooter parking and cycle lanes has multiple benefits, from encouraging a healthier and more active lifestyle, to reducing carbon and helping people be more sustainable.

OPPORTUNITY MATRIX SCORING

The following table shows further details on the scoring achieved by this project on the Opportunities Matrix.

NEED				ALIGNMENT WITH THE VISION AND CO-BENEFITS					
Votes from Community Day (aggregated data)	Pins on Opportunities Map (aggregated data)	Comments from all FNV engagement events (aggregated data)	Alignment to all FNV engagement events (aggregated data) – not used for scoring	Overall Aggregated Data Score	- Education and Economic Development	Health and Wellbeing	Sustainability and Greener Estate	Connected Communities	Overall Data Score
5 - High - 6+ Votes 3 - Med - 4 - 6 Votes 1 - Low - 1 - 3 Votes 0 - No Votes	5 - High - 6+ Votes 3 - Med - 4 - 6 Votes 1 - Low - 1 - 3 Votes 0 - No Votes	5 - High - 15+ Comments 3 - Med - 8 - 15 Comments 1 - Low - 1 - 7 Comments 0 - No Comments	High -10+ comments Medium - 6 - 9 Low - 1 - 5 No Comment	Each component evenly weighted - total maximum score of 15 (Auto-calculated)	5 - High - XX 3 - Medium - XX 1 - Low - XX 0 - No Alignment	5 - High - XX 3 - Medium - XX 1 - Low - XX 0 - No Alignment	5 - High - XX 3 - Medium - XX 1 - Low - XX 0 - No Alignment	5 - High - XX 3 - Medium - XX 1 - Low - XX 0 - No Alignment	Each component evenly weighted - total maximum score of 20 (Auto-calculated)
3	0	1	No Comments	4	0	3	3	5	11
DELIVERABILITY			ALIGNMENT WITH OTHER FUNDING OPPORTUNITIES AND PROJECTS						
Complexity of delivery and management	Expected Timescale of delivery	Overall Score	Degree to which the opportunity aligns with the Future Neighbourhood Programme	Degree to which the opportunity aligns with the Future Neighbourhood Programme	Degree to which the opportunity aligns with other secured funding stream	Degree to which the opportunity aligns with other secured funding stream	Degree to which opportunity is building on existing project	Which project?	Overall Score
High - 1 Medium - 2 Low - 3	Long (3+years) - 1 Medium (2-3 years) - 2 Short (0-1 Years) - 3	Score based on weighting	High Medium Low	Notes	High - 3 Medium - 2 Low - 1	Notes	High - 3 Medium - 2 Low - 1		(Weighted)
2	3	5	High	Funding for cycling storage as well as cycling support schemes including subsidised access to bikes and helmets, bike buddying schemes, and cycling training	Medium	doing a pilot by leisure centre - can get cheap cycle storage	Medium	Stakeholders suggested this as already happening	20

Cycle/Scooter Parking

STAKEHOLDERS WORKSHOP FEEDBACK

This section summarises feedback received from stakeholders captured during the stakeholders thematic workshop.

What Do You Think?	Challenges	Opportunities
<ul style="list-style-type: none"> • Already happening 	<ul style="list-style-type: none"> • Finding the pavement space for this • Increased scooter use on the estate also brings about more challenges with anti-social behaviour, speed limits and dangers for children/elderly people should their usage increase with younger adults • Will these impact/reduce the already limited parking available for those who need a car (e.g. care givers, parents etc.) ? • Accessibility - as affordable alternative to travel ? • Pavement too many bikes/scooters making the area messy • Safety- helmets provided ? 	<ul style="list-style-type: none"> • Identify opportunities for cycle hangars for personal bikes too not just for hire schemes • Encouraging people to use methods other than trains/buses and to get exercise • profit goes back into community development • Opportunity to formalise relationships with Cyclesafe groups and groups who may offer bikes/bike repairs at affordable prices
Suggested Locations		Anything Missing?
<ul style="list-style-type: none"> • Near stations and other areas people will travel to (bus stops, car parking) 		<ul style="list-style-type: none"> • No comments

The following key themes were identified:

- Antisocial behaviour and safety concerns (speed)
- Impact on motorised transport users
- Modal shift opportunity
- Affordability

Cycle/Scooter Parking

RESIDENTS FEEDBACK

This section summarises feedback received from residents captured during the engagement events:

- Community Day
- Your Refurb. Your Neighbourhood
- Community Fridge Launch
- Web response

There were 2 comments given by residents during all engagement events that have been tagged against this project as they either relate to the project or the project has the potential to address that specific issue.

The following key themes were identified:

- Increased cycling infrastructure
- Safety

SUGGESTED LOCATIONS

There were no locations suggested by residents and stakeholders for this project during the opportunity mapping stage.

Residents comments

- More cycling path
- Safer cycling routes

Community Centre



https://www.flickr.com/photos/while_spaces/

DESCRIPTION

A new or improved existing community space owned, led and managed by residents to provide activities for families, children and youth on the Estate.

Either as a temporary or permanent scheme, a community centre can provide spaces to work, meet and play at the heart of Lancaster West, with features such as affordable workspace, retail units, cafe, community areas and public open spaces integrated into it.

OPPORTUNITY MATRIX SCORING

The following table shows further details on the scoring achieved by this project on the Opportunities Matrix.

NEED				ALIGNMENT WITH THE VISION AND CO-BENEFITS					
Votes from Community Day (aggregated data)	Pins on Opportunities Map (aggregated data)	Comments from all FNV engagement events (aggregated data)	Alignment to Initial Ideas Day 2018 Feedback (assessment) – not used for scoring	Overall Aggregated Data Score	- Education and Economic Development	Health and Wellbeing	Sustainability and Greener Estate	Connected Communities	Overall Data Score
5 - High - 6+ Votes 3 - Med - 4 - 6 Votes 1 - Low - 1 - 3 Votes 0 - No Votes	5 - High - 6+ Votes 3 - Med - 4 - 6 Votes 1 - Low - 1 - 3 Votes 0 - No Votes	5 - High - 15+ Comments 3 - Med - 8 - 15 Comments 1 - Low - 1 - 7 Comments 0 - No Comments	High -10+ comments Medium - 6 - 9 Low - 1 - 5 No Comment	Each component evenly weighted - total maximum score of 15 (Auto-calculated)	5 - High - XX 3 - Medium - XX 1 - Low - XX 0 - No Alignment	5 - High - XX 3 - Medium - XX 1 - Low - XX 0 - No Alignment	5 - High - XX 3 - Medium - XX 1 - Low - XX 0 - No Alignment	5 - High - XX 3 - Medium - XX 1 - Low - XX 0 - No Alignment	Each component evenly weighted - total maximum score of 20 (Auto-calculated)
3	5	5	High	13	1	3	1	5	10
DELIVERABILITY			ALIGNMENT WITH OTHER FUNDING OPPORTUNITIES AND PROJECTS						
Complexity of delivery and management	Expected Timescale of delivery	Overall Score	Degree to which the opportunity aligns with the Future Neighbourhood Programme	Degree to which the opportunity aligns with the Future Neighbourhood Programme	Degree to which the opportunity aligns with other secured funding stream	Degree to which the opportunity aligns with other secured funding stream	Degree to which opportunity is building on existing project	Which project?	Overall Score
High - 1 Medium - 2 Low - 3	Long (3+years) - 1 Medium (2-3 years) - 2 Short (0-1 Years) - 3	Score based on weighting	High Medium Low	Notes	High - 3 Medium - 2 Low - 1	Notes	High - 3 Medium - 2 Low - 1		(Weighted)
2	2	4	Medium	Proposals to transform NKRC into a new 'eco-community hub'	Low	- already got funding for resource centre - investing 50k feasibility	Medium	NKRC	27

Community Centre

STAKEHOLDERS WORKSHOP FEEDBACK

This section summarises feedback received from stakeholders captured during the stakeholders thematic workshop.

What Do You Think?	Challenges	Opportunities
<ul style="list-style-type: none"> opportunity to build something accessible to whole community 	<ul style="list-style-type: none"> Think of the wider structure of community centres is this the same as Maxilla City (Training for skills building Westway) Bay 20, Henry Dickens 	<ul style="list-style-type: none"> If a new build consider achieving Secure by design Accreditation The Curve? If this is an existing building there is Home Office funding available to improve the physical security of youth and community centres gardening

Suggested Locations	Anything Missing?
<ul style="list-style-type: none"> Walmer Road Clinic 	<ul style="list-style-type: none"> No comments

The following key themes were identified:

- Accessibility
- New build vs Refurb/Improved considerations
- Precedents
- Linking with wider structure of community centres

Community Centre

RESIDENTS FEEDBACK

This section summarises feedback received from residents captured during the engagement events:

- Community Day
- Your Refurb. Your Neighbourhood
- Community Fridge Launch
- Web response

Residents comments

- Activities after school or weekends (free or very low amount to pay)
- Affordable space for community activities
- after school activities and more youth clubs
- After school club
- After school club; women morning tea and learn something at the same time between 10 am to 11 am
- Arabic school for kids
- Arches should have community use
- Art courses like mosaic, painting, how to play instruments (once a week)
- Both resource centre (under the tower and the one that flooded) are closed we need a space for the community
- Bringing the community together and participating as one
- Children sport like boxing, Jiu jitsu or martial arts
- Clubs for young people that surrounds the art
- community centre targeted to youth
- community events after school activities and youth clubs
- community events for kids
- Community space. Bringing community together
- Create a place where parents can leave the kids when they are going to church and charge £1 o more
- Curve activities closest classes
- For 24hr use, a community centre, should be accessible and don't disturb
- Homework club
- International event day
- Kids, youth club and community involvement.
- More actives for different age groups
- More actives for kids(sports +Events)
- More activities in the resource centre

Community Centre

There were 37 comments given by residents during all engagement events that have been tagged against this project as they either relate to the project or the project has the potential to address that specific issue.

The following key themes were identified:

- Affordability
- Temporality - After school, weekends, 24hr.
- Activities and clubs for different age groups
- Variety of courses (art, arabic, sports)
- Events

Residents comments

- More help with after school care for kids with special needs kids
- North Kensington Resource Centre and we could use the tea garden for everyone
- Play groups for kids so moms can drop kids there for few hours and go to learn new skills or have relaxing time
- rise , need new space after flooding of the centre
- Science classes using volunteers
- Spaces/studio residents can use
- Sports: ballet, gymnastic for kids
- studio spaces for young people
- tuition for kids cheaper
- Weekend parents groups for working parents
- Youth service: club kids 3- 8 - 10 years old

Community Centre

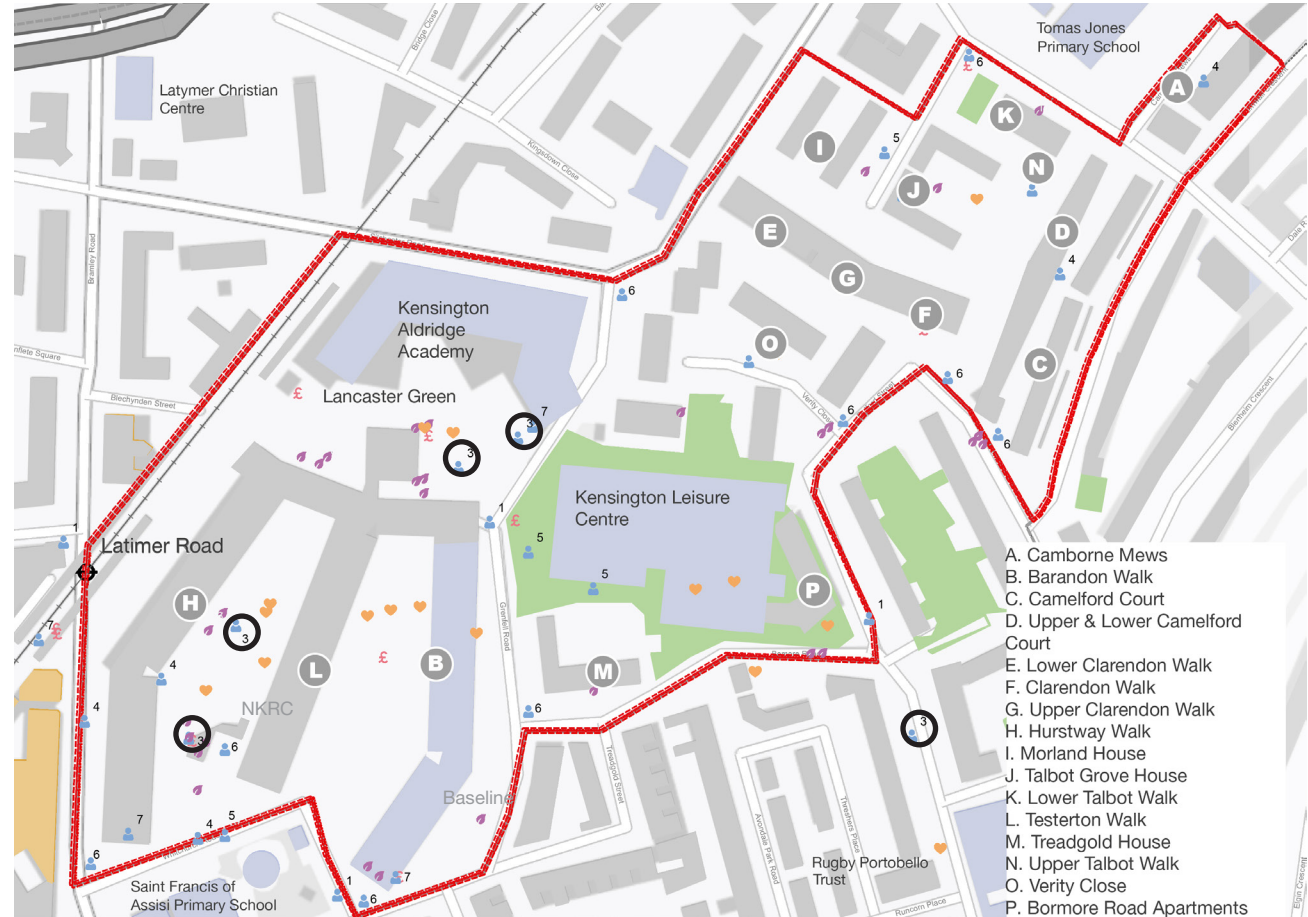
SUGGESTED LOCATIONS

This map summarises the locations suggested by residents and stakeholders for this project during the opportunity mapping stage.

○ Potential Locations:

- Between Hurstway Walk and Testerton Walk
- Barandon Community Rooms
- Walmer Road
- North Kensington Resource Centre

The locations identified are based on feedback from residents and key stakeholders who operate in the local area. Feasibility of these locations has been verified by the LWNT and key stakeholders which has led to minor amendments and modifications of the original map. Additional possible locations have also been included after this review. These locations will need to be further reviewed and tested as part of each individual project design process.



- A. Camborne Mews
- B. Barandon Walk
- C. Camelford Court
- D. Upper & Lower Camelford Court
- E. Lower Clarendon Walk
- F. Clarendon Walk
- G. Upper Clarendon Walk
- H. Hurstway Walk
- I. Morland House
- J. Talbot Grove House
- K. Lower Talbot Walk
- L. Testerton Walk
- M. Treadgold House
- N. Upper Talbot Walk
- O. Verity Close
- P. Bormore Road Apartments

- Connected Communities
- 1. Art crossings
- 2. Cycle and/or scooter parking
- 3. Community centre
- 4. Lighting improvements
- 5. Play street
- 6. Neighbourhood Totems
- 7. Services Hub

Lighting Improvements



<https://www.pinterest.es/pin/262405115766706912/>

DESCRIPTION

Lighting interventions on communal areas are a quick, cost effective way of increasing safety and reducing crime.

Engaging a community with simple lighting interventions can also be used to build resilience, create safer places and reduce antisocial behaviour while building a sense of community.

OPPORTUNITY MATRIX SCORING

The following table shows further details on the scoring achieved by this project on the Opportunities Matrix.

NEED				ALIGNMENT WITH THE VISION AND CO-BENEFITS					
Votes from Community Day (aggregated data)	Pins on Opportunities Map (aggregated data)	Comments from all FNV engagement events (aggregated data)	Alignment to Initial Ideas Day 2018 Feedback (assessment) – not used for scoring	Overall Aggregated Data Score	- Education and Economic Development	Health and Wellbeing	Sustainability and Greener Estate	Connected Communities	Overall Data Score
5 - High - 6+ Votes 3 - Med - 4 - 6 Votes 1 - Low - 1 - 3 Votes 0 - No Votes	5 - High - 6+ Votes 3 - Med - 4 - 6 Votes 1 - Low - 1 - 3 Votes 0 - No Votes	5 - High - 15+ Comments 3 - Med - 8 - 15 Comments 1 - Low - 1 - 7 Comments 0 - No Comments	High -10+ comments Medium - 6 - 9 Low - 1 - 5 No Comment	Each component evenly weighted - total maximum score of 15 (Auto-calculated)	5 - High - XX 3 - Medium - XX 1 - Low - XX 0 - No Alignment	5 - High - XX 3 - Medium - XX 1 - Low - XX 0 - No Alignment	5 - High - XX 3 - Medium - XX 1 - Low - XX 0 - No Alignment	5 - High - XX 3 - Medium - XX 1 - Low - XX 0 - No Alignment	Each component evenly weighted - total maximum score of 20 (Auto-calculated)
5	5	1	Medium	11	0	0	1	5	6
DELIVERABILITY			ALIGNMENT WITH OTHER FUNDING OPPORTUNITIES AND PROJECTS						
Complexity of delivery and management	Expected Timescale of delivery	Overall Score	Degree to which the opportunity aligns with the Future Neighbourhood Programme	Degree to which the opportunity aligns with the Future Neighbourhood Programme	Degree to which the opportunity aligns with other secured funding stream	Degree to which the opportunity aligns with other secured funding stream	Degree to which opportunity is building on existing project	Which project?	Overall Score
High - 1 Medium - 2 Low - 3	Long (3+years) - 1 Medium (2-3 years) - 2 Short (0-1 Years) - 3	Score based on weighting	High Medium Low	Notes	High - 3 Medium - 2 Low - 1	Notes	High - 3 Medium - 2 Low - 1		(Weighted)
2	3	5	Low		Low		Medium	Pilot refurb team	22

Lighting Improvements

STAKEHOLDERS WORKSHOP FEEDBACK

This section summarises feedback received from stakeholders captured during the stakeholders thematic workshop.

What Do You Think?	Challenges	Opportunities
<ul style="list-style-type: none"> No comments. 	<ul style="list-style-type: none"> Finding ways of increasing lighting without increasing light pollution Additional lighting should also be paired measures to make dark spaces accessible to women 	<ul style="list-style-type: none"> Encouraging people to walk in the dark Lighting as art can serve both purposes of adding beauty and design as well as safety Lighting can be used creatively as a waymarker

Suggested Locations	Anything Missing?
<ul style="list-style-type: none"> All garden spaces on LWE All walkways in blocks 	<ul style="list-style-type: none"> No comments

The following key themes were identified:

- Light pollution
- Safety, especially for women
- Art
- Wayfinding

Lighting Improvements

RESIDENTS FEEDBACK

This section summarises feedback received from residents captured during the engagement events:

- Community Day
- Your Refurb. Your Neighbourhood
- Community Fridge Launch
- Web response

There were 3 comments given by residents during all engagement events that have been tagged against this project as they either relate to the project or the project has the potential to address that specific issue.

The following key themes were identified:

- Safety and tackling antisocial behaviour

Residents comments

- Antisocial behaviours, safe community
- Lighting improvements everywhere
- Lighting improvements to make infrastructure

Lighting Improvements

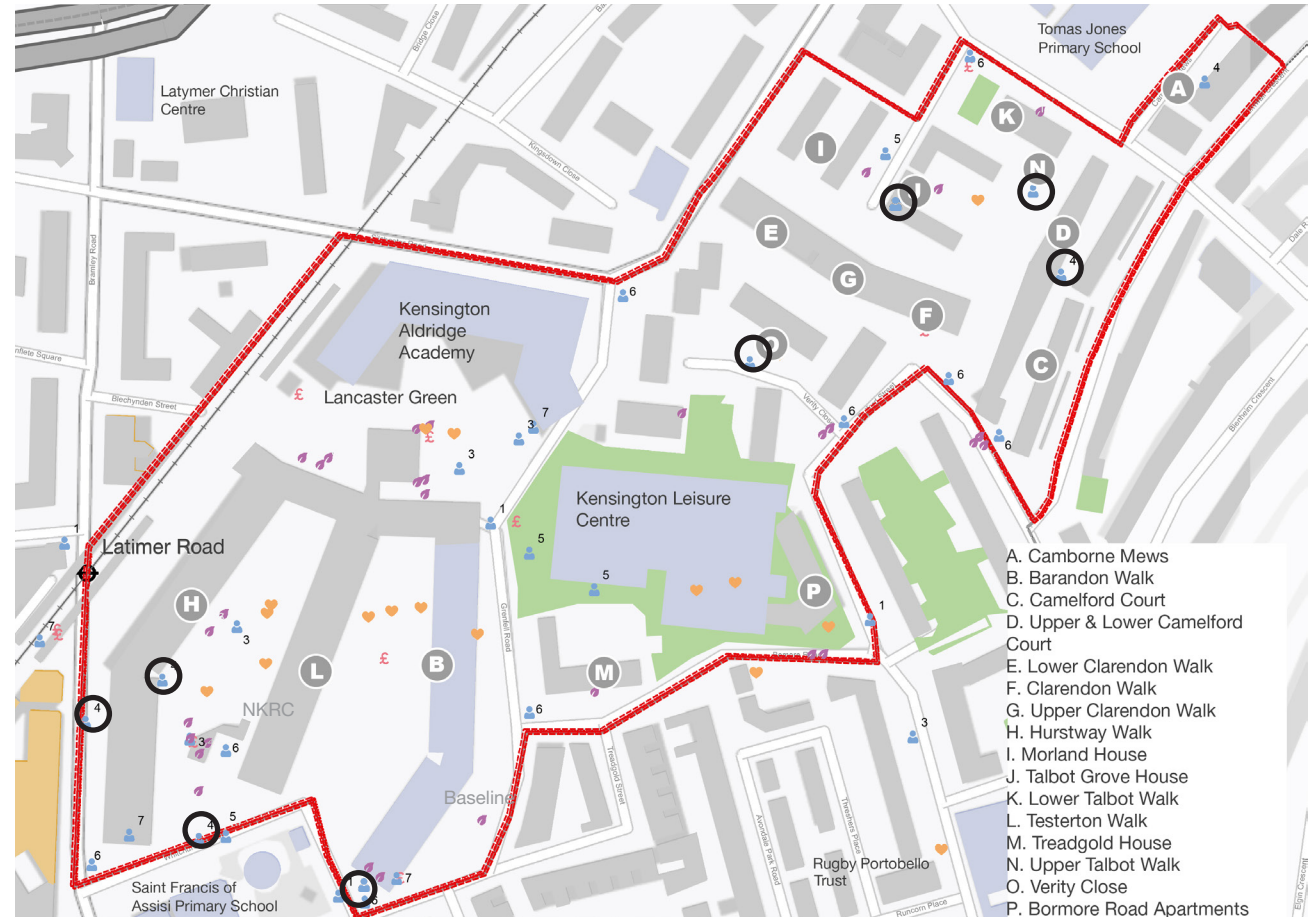
SUGGESTED LOCATIONS

This map summarises the locations suggested by residents and stakeholders for this project during the opportunity mapping stage.

○ Potential Locations:

- Bramley Road
- Hurstway Walk
- Whitchurch Road
- Verity Close
- Talbot Grove House
- Between Upper Talbot Walk and Upper & Lower Camerford Court
- Upper & Lower Camerford Court

The locations identified are based on feedback from residents and key stakeholders who operate in the local area. Feasibility of these locations has been verified by the LWNT and key stakeholders which has led to minor amendments and modifications of the original map. Additional possible locations have also been included after this review. These locations will need to be further reviewed and tested as part of each individual project design process.



- A. Camborne Mews
- B. Barandon Walk
- C. Camelford Court
- D. Upper & Lower Camelford Court
- E. Lower Clarendon Walk
- F. Clarendon Walk
- G. Upper Clarendon Walk
- H. Hurstway Walk
- I. Morland House
- J. Talbot Grove House
- K. Lower Talbot Walk
- L. Testerton Walk
- M. Treadgold House
- N. Upper Talbot Walk
- O. Verity Close
- P. Bormore Road Apartments

- Connected Communities
- 1. Art crossings
- 2. Cycle and/or scooter parking
- 3. Community centre
- 4. Lighting improvements
- 5. Play street
- 6. Neighbourhood Totems
- 7. Services Hub

Play Streets



<https://www.escofet.com/for/pecho/pesle/urto/supafille-ent/>

DESCRIPTION

The pedestrianisation of a vehicular space to allow for space for activities, leisure, dwelling and greening contributes to having a neighbourhood where streets can accommodate various functions, including education and cultural, economic and community-oriented activities.

A play street can contribute to having cleaner air, greener spaces and calmed traffic, which also contributes to health and wellbeing of people.

OPPORTUNITY MATRIX SCORING

The following table shows further details on the scoring achieved by this project on the Opportunities Matrix.

NEED				ALIGNMENT WITH THE VISION AND CO-BENEFITS					
Votes from Community Day (aggregated data)	Pins on Opportunities Map (aggregated data)	Comments from all FNV engagement events (aggregated data)	Alignment to Initial Ideas Day 2018 Feedback (assessment) – not used for scoring	Overall Aggregated Data Score	Economic Development	Health and Wellbeing	Sustainability and Greener Estate	Connected Communities	Overall Data Score
5 - High - 6+ Votes 3 - Med - 4 - 6 Votes 1 - Low - 1 - 3 Votes 0 - No Votes	5 - High - 6+ Votes 3 - Med - 4 - 6 Votes 1 - Low - 1 - 3 Votes 0 - No Votes	5 - High - 15+ Comments 3 - Med - 8 - 15 Comments 1 - Low - 1 - 7 Comments 0 - No Comments	High -10+ comments Medium - 6 - 9 Low - 1 - 5 No Comment	Each component evenly weighted - total maximum score of 15 (Auto-calculated)	5 - High - XX 3 - Medium - XX 1 - Low - XX 0 - No Alignment	5 - High - XX 3 - Medium - XX 1 - Low - XX 0 - No Alignment	5 - High - XX 3 - Medium - XX 1 - Low - XX 0 - No Alignment	5 - High - XX 3 - Medium - XX 1 - Low - XX 0 - No Alignment	Each component evenly weighted - total maximum score of 20 (Auto-calculated)
5	3	3	Low	11	0	3	3	5	11
DELIVERABILITY			ALIGNMENT WITH OTHER FUNDING OPPORTUNITIES AND PROJECTS						
Complexity of delivery and management	Expected Timescale of delivery	Overall Score	Degree to which the opportunity aligns with the Future Neighbourhood Programme	Degree to which the opportunity aligns with the Future Neighbourhood Programme	Degree to which the opportunity aligns with other secured funding stream	Degree to which the opportunity aligns with other secured funding stream	Degree to which opportunity is building on existing project	Which project?	Overall Score
High - 1 Medium - 2 Low - 3	Long (3+years) - 1 Medium (2-3 years) - 2 Short (0-1 Years) - 3	Score based on weighting	High Medium Low	Notes	High - 3 Medium - 2 Low - 1	Notes	High - 3 Medium - 2 Low - 1		(Weighted)
1	3	4	Low		Low		Low		26

Play Streets

STAKEHOLDERS WORKSHOP FEEDBACK

This section summarises feedback received from stakeholders captured during the stakeholders thematic workshop.

What Do You Think?	Challenges	Opportunities
<ul style="list-style-type: none"> Play streets are great if done as shown in the example image. 	<ul style="list-style-type: none"> Hard with so much building activity - after refurb and GT future resolved? reflect need of people's real journeys Giving priority to pedestrians in areas designed for cars 	<ul style="list-style-type: none"> If not a dedicated play street - could have it on the weekends? Use high quality materials to improve experience of all users Could provide respite to families from the extensive works happening through the external and internal refurbishment programmes

Suggested Locations	Anything Missing?
<ul style="list-style-type: none"> Whitchurch Road 	<ul style="list-style-type: none"> No comments

The following key themes were identified:

- Alignment with refurbishment, also as a space to provide respite
- People real needs and journeys
- Temporality eg weekends

Play Streets

RESIDENTS FEEDBACK

This section summarises feedback received from residents captured during the engagement events:

- Community Day
- Your Refurb. Your Neighbourhood
- Community Fridge Launch
- Web response

There were 9 comments given by residents during all engagement events that have been tagged against this project as they either relate to the project or the project has the potential to address that specific issue.

The following key themes were identified:

- Art
- Community involvement
- Activities for different age groups

Residents comments

- Clubs for young people that surrounds the art
- community events for kids
- Community space. Bringing community together
- improve air quality
- Kids, youth club and community involvement.
- More actives for different age groups
- More actives for kids(sports +Events)
- More spaces for kids and youth
- Security concerns see Grenfell (play streets)

Play Streets

SUGGESTED LOCATIONS

This map summarises the locations suggested by residents and stakeholders for this project during the opportunity mapping stage.

○ Potential Locations:

- Whitchurch Road
- Lancaster Green / Kensington Leisure Centre
- St Marks Cl

The locations identified are based on feedback from residents and key stakeholders who operate in the local area. Feasibility of these locations has been verified by the LWNT and key stakeholders which has led to minor amendments and modifications of the original map. Additional possible locations have also been included after this review. These locations will need to be further reviewed and tested as part of each individual project design process.



Neighbourhood Totems



<http://www.mapbox.com/london/neighborhoodmaps>

DESCRIPTION

Physical structures with digital features can help people with wayfinding, to navigate the estate better and help them reach key locations and services.

OPPORTUNITY MATRIX SCORING

The following table shows further details on the scoring achieved by this project on the Opportunities Matrix.

NEED				ALIGNMENT WITH THE VISION AND CO-BENEFITS					Overall Data Score
Votes from Community Day (aggregated data)	Pins on Opportunities Map (aggregated data)	Comments from all FNV engagement events (aggregated data)	Alignment to Initial Ideas Day 2018 Feedback (assessment) – not used for scoring	Overall Aggregated Data Score	Economic Development	Health and Wellbeing	Sustainability and Greener Estate	Connected Communities	Overall Data Score
5 - High - 6+ Votes 3 - Med - 4 - 6 Votes 1 - Low - 1 - 3 Votes 0 - No Votes	5 - High - 6+ Votes 3 - Med - 4 - 6 Votes 1 - Low - 1 - 3 Votes 0 - No Votes	5 - High - 15+ Comments 3 - Med - 8 - 15 Comments 1 - Low - 1 - 7 Comments 0 - No Comments	High -10+ comments Medium - 6 - 9 Low - 1 - 5 No Comment	Each component evenly weighted - total maximum score of 15 (Auto-calculated)	5 - High - XX 3 - Medium - XX 1 - Low - XX 0 - No Alignment	5 - High - XX 3 - Medium - XX 1 - Low - XX 0 - No Alignment	5 - High - XX 3 - Medium - XX 1 - Low - XX 0 - No Alignment	5 - High - XX 3 - Medium - XX 1 - Low - XX 0 - No Alignment	Each component evenly weighted - total maximum score of 20 (Auto-calculated)
1	1	1	Low	3	3	3	1	5	12
DELIVERABILITY			ALIGNMENT WITH OTHER FUNDING OPPORTUNITIES AND PROJECTS					Overall Score	
Complexity of delivery and management	Expected Timescale of delivery	Overall Score	Degree to which the opportunity aligns with the Future Neighbourhood Programme	Degree to which the opportunity aligns with the Future Neighbourhood Programme	Degree to which the opportunity aligns with other secured funding stream	Degree to which the opportunity aligns with other secured funding stream	Degree to which opportunity is building on existing project	Which project?	Overall Score
High - 1 Medium - 2 Low - 3	Long (3+years) - 1 Medium (2-3 years) - 2 Short (0-1 Years) - 3	Score based on weighting	High Medium Low	Notes	High - 3 Medium - 2 Low - 1	Notes	High - 3 Medium - 2 Low - 1		(Weighted)
2	3	5	Low		Low		Medium	Digital screens in blocks already in place	20

Neighbourhood Totems

STAKEHOLDERS WORKSHOP FEEDBACK

This section summarises feedback received from stakeholders captured during the stakeholders thematic workshop.

What Do You Think?	Challenges	Opportunities
<ul style="list-style-type: none"> Great idea - much needed! 	<ul style="list-style-type: none"> Lots changing - would need to be kept up to date! The challenge is identifying the correct information to put on these Language barriers for those who do not speak english/ are not english as a first language speakers 	<ul style="list-style-type: none"> Opportunities to connect with digital totems that can provide real time updates on community events etc./don't have to be static There's a lot of wayfinding theory we can draw on for this - for example the airport at Schipol in the Netherlands is considered the gold standard for designing wayfinding systems Really useful way of giving people information about the area Include local community support numbers and locations for Vulnerable people Making them Digital and interactive - some already implemented in locations on the Estate
Suggested Locations	Anything Missing?	
<ul style="list-style-type: none"> No comments 	<ul style="list-style-type: none"> No comments 	

The following key themes were identified:

- Links to services available, community events, support information for vulnerable groups
- Some challenges identified by stakeholders around maintenance to keep it up to date and identifying the correct
- Language barriers

Neighbourhood Totems

RESIDENTS FEEDBACK

This section summarises feedback received from residents captured during the engagement events:

- Community Day
- Your Refurb. Your Neighbourhood
- Community Fridge Launch
- Web response

There were 16 comments given by residents during all engagement events that have been tagged against this project as they either relate to the project or the project has the potential to address that specific issue.

The following key themes were identified:

- Need for walk-in, quicker health checks
- Improve and increase amount of services in the area
- Facilities for vulnerable groups, focus on women
- Integrated with activities eg Yoga, Swimming

Residents comments

- Antisocial behaviours, safe community
- Counselling hub walk in - the curve or bay 20
- Health checks at the curve, why is it closing? There is a huge need
- improve GP service in the area to help vulnerable people
- Mental health
- More mental health services close to the area
- more support to understand services for people with disabilities
- More wellbeing facility for women
- Paint and medical centre so the wall is no longer depressing grey!
- Quicker health services
- swimming
- wellbeing centre
- Women only health and wellbeing programmes
- Yoga class, meditation class
- Yoga for mothers and children's

Neighbourhood Totems

SUGGESTED LOCATIONS

This map summarises the locations suggested by residents and stakeholders for this project during the opportunity mapping stage.

○ Potential Locations:

- Key intersections around the perimeter of the estate

The locations identified are based on feedback from residents and key stakeholders who operate in the local area. Feasibility of these locations has been verified by the LWNT and key stakeholders which has led to minor amendments and modifications of the original map. Additional possible locations have also been included after this review. These locations will need to be further reviewed and tested as part of each individual project design process.



- A. Camborne Mews
- B. Barandon Walk
- C. Camelford Court
- D. Upper & Lower Camelford Court
- E. Lower Clarendon Walk
- F. Clarendon Walk
- G. Upper Clarendon Walk
- H. Hurstway Walk
- I. Morland House
- J. Talbot Grove House
- K. Lower Talbot Walk
- L. Testerton Walk
- M. Treadgold House
- N. Upper Talbot Walk
- O. Verity Close
- P. Bormore Road Apartments

- Connected Communities
- 1. Art crossings
- 2. Cycle and/or scooter parking
- 3. Community centre
- 4. Lighting improvements
- 5. Play street
- 6. Neighbourhood Totems
- 7. Services Hub

Services Hub



<https://www.zam magazine.com/article/person-student-hub-gov->

DESCRIPTION

A Service Hub is a space (physical) or service (digital) where users can get safe and convenient access to available services. As a space or service it can take many configurations, form a single hub or building that accommodates a range of services to a neighbourhood-wide service that brings together other available services being held in different physical premises on the estate and wider area.

OPPORTUNITY MATRIX SCORING

The following table shows further details on the scoring achieved by this project on the Opportunities Matrix.

NEED				ALIGNMENT WITH THE VISION AND CO-BENEFITS					Overall Data Score
Votes from Community Day (aggregated data)	Pins on Opportunities Map (aggregated data)	Comments from all FNV engagement events (aggregated data)	Alignment to Initial Ideas Day 2018 Feedback (assessment) – not used for scoring	Overall Aggregated Data Score	- Education and Economic Development	Health and Wellbeing	Sustainability and Greener Estate	Connected Communities	
5 - High - 6+ Votes 3 - Med - 4 - 6 Votes 1 - Low - 1 - 3 Votes 0 - No Votes	5 - High - 6+ Votes 3 - Med - 4 - 6 Votes 1 - Low - 1 - 3 Votes 0 - No Votes	5 - High - 15+ Comments 3 - Med - 8 - 15 Comments 1 - Low - 1 - 7 Comments 0 - No Comments	High -10+ comments Medium - 6 - 9 Low - 1 - 5 No Comment	Each component evenly weighted - total maximum score of 15 (Auto-calculated)	5 - High - XX 3 - Medium - XX 1 - Low - XX 0 - No Alignment	5 - High - XX 3 - Medium - XX 1 - Low - XX 0 - No Alignment	5 - High - XX 3 - Medium - XX 1 - Low - XX 0 - No Alignment	5 - High - XX 3 - Medium - XX 1 - Low - XX 0 - No Alignment	Each component evenly weighted - total maximum score of 20 (Auto-calculated)
3	3	3	No Comments	9	1	5	0	5	11
DELIVERABILITY			ALIGNMENT WITH OTHER FUNDING OPPORTUNITIES AND PROJECTS					Overall Score	
Complexity of delivery and management	Expected Timescale of delivery	Overall Score	Degree to which the opportunity aligns with the Future Neighbourhood Programme	Degree to which the opportunity aligns with the Future Neighbourhood Programme	Degree to which the opportunity aligns with other secured funding stream	Degree to which the opportunity aligns with other secured funding stream	Degree to which opportunity is building on existing project		Which project?
High - 1 Medium - 2 Low - 3	Long (3+years) - 1 Medium (2-3 years) - 2 Short (0-1 Years) - 3	Score based on weighting	High Medium Low	Notes	High - 3 Medium - 2 Low - 1	Notes	High - 3 Medium - 2 Low - 1		(Weighted)
2	2	4	Low		Low	We have feasibility funding, but not funding for actual work	Medium	LWNT services initiatives	24

Services Hub

STAKEHOLDERS WORKSHOP FEEDBACK

This section summarises feedback received from stakeholders captured during the stakeholders thematic workshop and post workshop feedback.

What Do You Think?	Challenges	Opportunities
<ul style="list-style-type: none"> Several of the other projects listed could knit together around a services hub. 	<ul style="list-style-type: none"> Increased communication channels across Lancaster West and beyond mean that we have to be conscious of integrating everything available at the hub into those platforms for residents are not excluded based on confidence and digital skills Maintaining a space where people want to visit Will those working there be trained to give specialist advice? 	<ul style="list-style-type: none"> Encourages people to meet and go to different places With a suitable strategy for adapting, refurbishing, building out (for new space), and improving the public realm areas between these points, a kind of 'string of pearls' could be envisaged to form the Lancaster West Neighbourhood Services Hub.
Suggested Locations		Anything Missing?
<ul style="list-style-type: none"> End of Hurstway Walk post refurb Baseline Business Studios Foreland Medical Centre; KLC; Baseline Studios; the ground and lower levels at southern end of Hurstway Walk at corner of Whitchurch Rd; the community run spaces at either end and between Hurstway and Testerton Walks (whilst being mindful to recognise and respect the community's 'ownership' of these spaces). 		<ul style="list-style-type: none"> The other important part would be to overlay a suitable range of public and community services that are agreed to be provided, collocating at the different premises

The following key themes were identified:

- Potential to link different services together
- Digital inclusivity
- Integration with COmmunity Facilities and activities

Services Hub

RESIDENTS FEEDBACK

This section summarises feedback received from residents captured during the engagement events:

- Community Day
- Your Refurb. Your Neighbourhood
- Community Fridge Launch
- Web response

There were 11 comments given by residents during all engagement events that have been tagged against this project as they either relate to the project or the project has the potential to address that specific issue.

The following key themes were identified:

- Need for walk-in, quicker health checks
- Improve and increase amount of services in the area
- Facilities for vulnerable groups, focus on people with disabilities
- Mental health
- Accessibility
- Safety

Residents comments

- Antisocial behaviours, safe community
- Counselling hub walk in - the curve or bay 20
- Health checks at the curve, why is it closing? There is a huge need
- improve GP service in the area to help vulnerable people
- Mental health
- More mental health services close to the area
- more support to understand services for people with disabilities
- Quicker health services
- Service Huub, near main road
- Very wishy was performances and services provided aren't useful

Services Hub

SUGGESTED LOCATIONS

This map summarises the locations suggested by residents and stakeholders for this project during the opportunity mapping stage.

○ Potential Locations:

- Hurstway Walk
- Barandon Walk
- Kensington Aldridge Academy

The locations identified are based on feedback from residents and key stakeholders who operate in the local area. Feasibility of these locations has been verified by the LWNT and key stakeholders which has led to minor amendments and modifications of the original map. Additional possible locations have also been included after this review. These locations will need to be further reviewed and tested as part of each individual project design process.



- A. Camborne Mews
- B. Barandon Walk
- C. Camelford Court
- D. Upper & Lower Camelford Court
- E. Lower Clarendon Walk
- F. Clarendon Walk
- G. Upper Clarendon Walk
- H. Hurstway Walk
- I. Morland House
- J. Talbot Grove House
- K. Lower Talbot Walk
- L. Testerton Walk
- M. Treadgold House
- N. Upper Talbot Walk
- O. Verity Close
- P. Bormore Road Apartments

- Connected Communities
- 1. Art crossings
- 2. Cycle and/or scooter parking
- 3. Community centre
- 4. Lighting improvements
- 5. Play street
- 6. Neighbourhood Totems
- 7. Services Hub

ARUP

