

Refurbishment Overview

The North Kensington Resource Centre refurbishment aims to upgrade the existing centre to become an exemplar eco community centre, supporting LWNT's vision to become the UK's first zero-carbon estate.

The refurb will include:

Energy saving measures

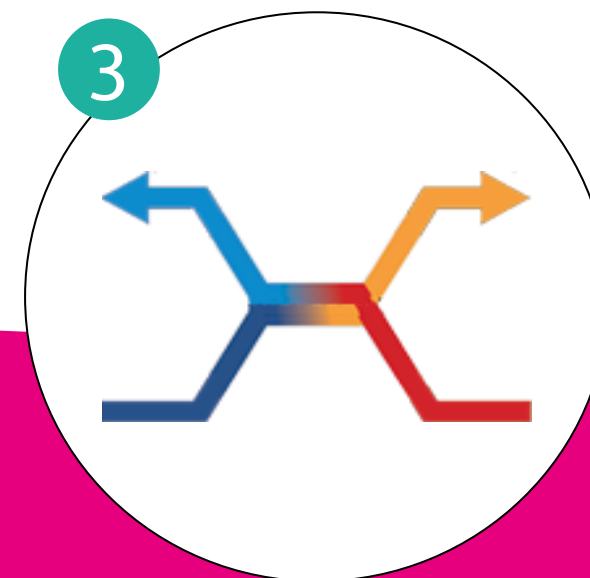
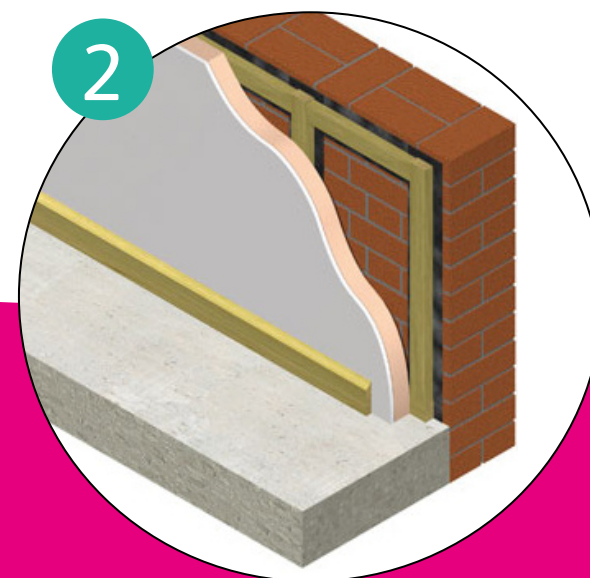
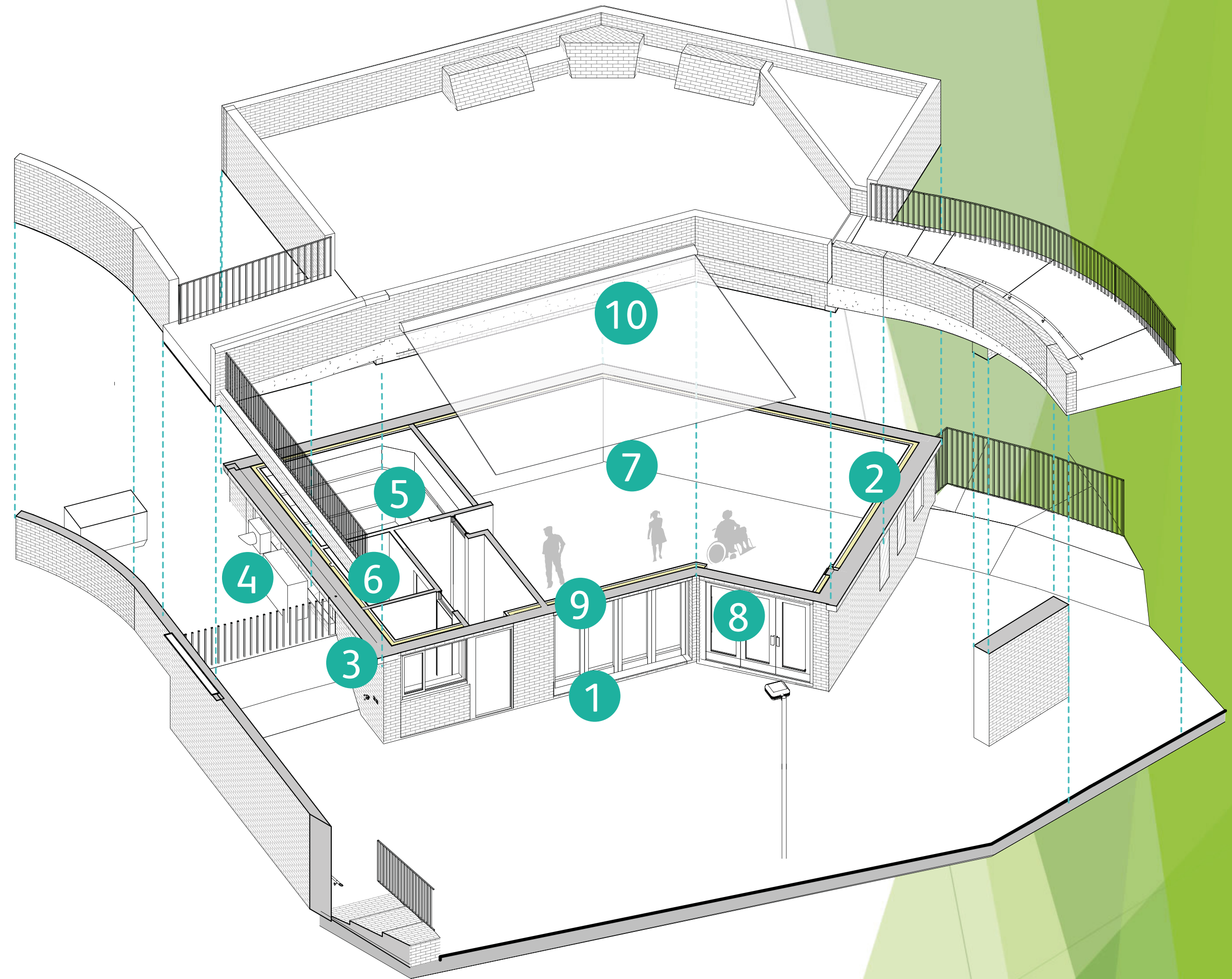
- 1 Triple-glazed windows
- 2 Internal wall and roof insulation
- 3 Mechanical ventilation with heat recovery (MVHR)
- 4 Air source heat pump

Internal improvements

- 5 New commercial kitchen
- 6 New accessible bathroom
- 7 Redecorating

External improvements

- 8 New external lighting
- 9 New bi-folding door
- 10 New awning



A key part of the Lancaster West Refurbishment is co-design. and we want you to help us make key decisions about your space.

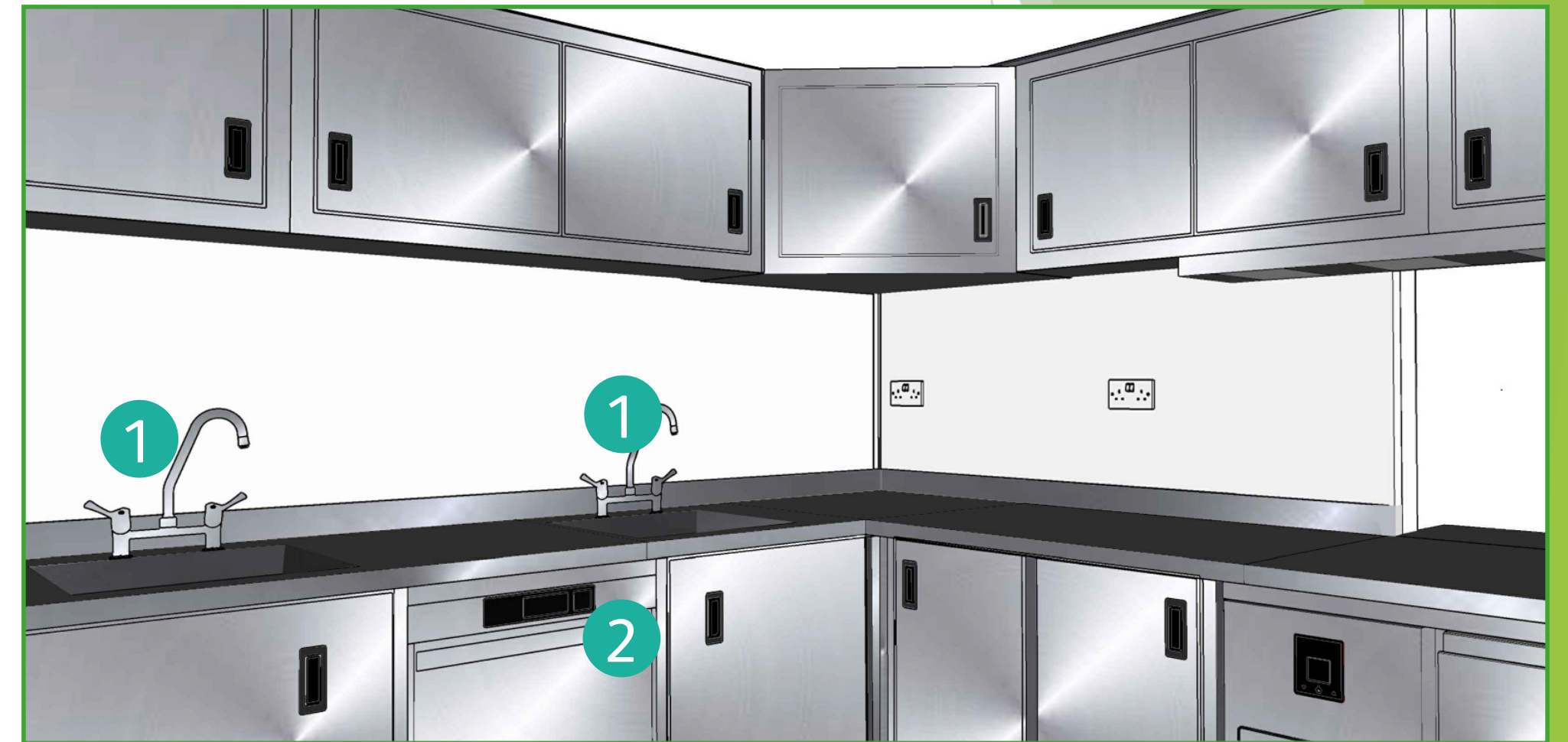
New Commercial Kitchen

The existing domestic kitchen is an integral part of the community centre, but is small and outdated. The refurbishment provides an opportunity to expand and upgrade the space to a professional kitchen.

This will improve food hygiene standards and facilitate a wider range of activities such as community cooking classes.

Key features

- Nova Design have proposed new, larger kitchen layout after discussion with users
- Stainless steel units
- Kitch hatch made narrower and taller
- Heat lamps added to servery area
- Washable ceiling
- Community fridge to remain



Kitchen visuals provided by NOVA design

- | | |
|--------------------------------|-------------------------|
| 1 Two sinks | 5 Self-cleaning oven |
| 2 Commercial dishwasher | 6 Handwash basin |
| 3 Commercial extraction canopy | 7 Refrigerated counters |
| 4 Induction hob | 8 Heated gantry |



Accessibility

New external lift

The existing building features a slippery, stepped access route externally which is not suitable for people with mobility issues. It is therefore not fit for purpose as it is not accessible to the community it serves.

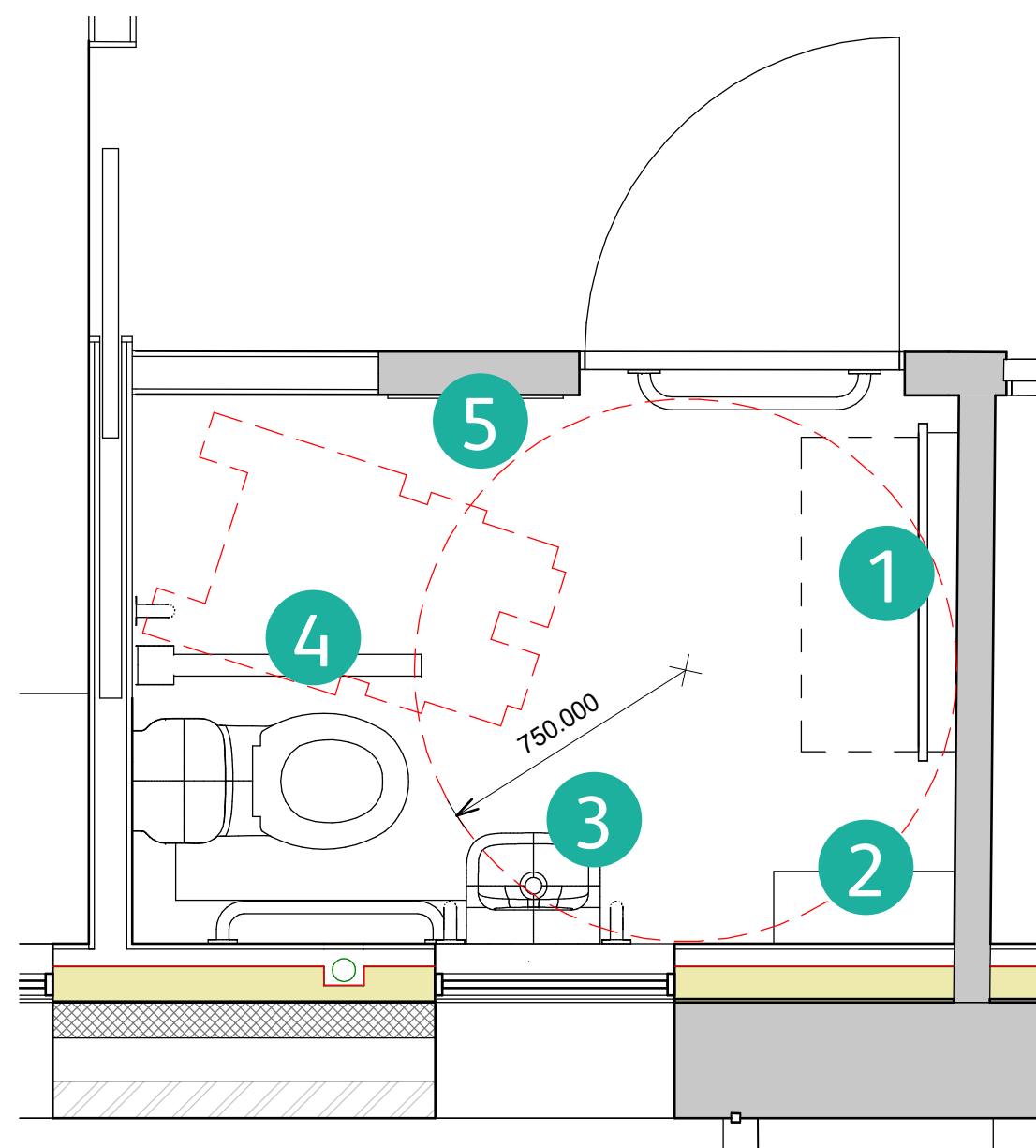
To address this, an external lift is to be fitted to the North East corner as part of separate works by LWNT.

New accessible bathroom

In addition to the improved access, we will be replacing the two existing, cramped WCs with a single more accessible bathroom.

Key

- 1 Baby Changer
- 2 Shelf
- 3 Basin
- 4 Stainless Steel Grab Rail
- 5 Mirror



Accessible bathroom floor plan



Existing ramp access



Existing toilets



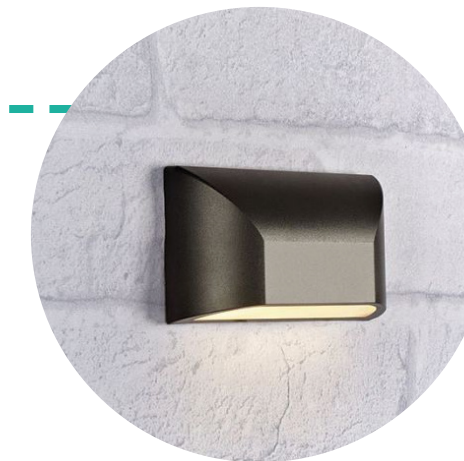
Accessible bathroom features



External Finishes



New ambient lighting
Wall Lights



Green Wall Lighting



Handrail lighting



RAL 7016

RAL 7015

RAL 7046

Window frame finish options
Powder coated

31021

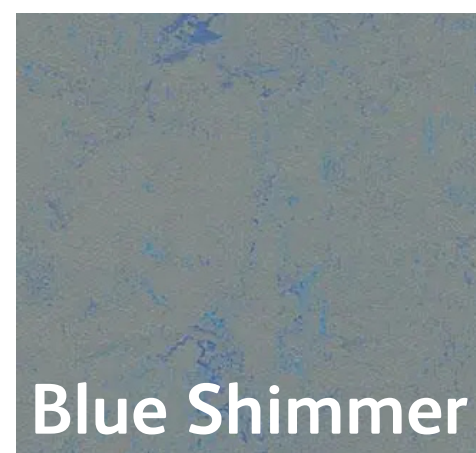
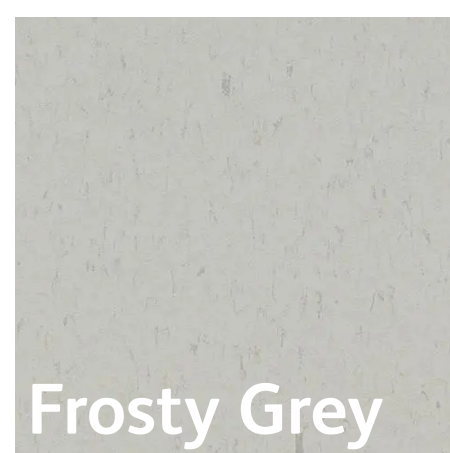
30941

Awning colour options
Sunvas

A key part of the Lancaster West Refurbishment is co-design and we want you to help us make key decisions about your space.

Which external finish options do you prefer?

Internal Finishes



Floor finish options Marmoleum



Wall finish options
Feature wall



Ceiling finish options

A key part of the Lancaster West Refurbishment is co-design. and we want you to help us make key decisions about your space.

Which internal finish options do you prefer?

External Visual

