

# Refurbishment Overview

The North Kensington Resource Centre refurbishment aims to upgrade the existing centre to become an exemplar eco community centre, supporting LWNT's vision to become the UK's first carbon-neutral estate.

The refurbishment will deliver an energy efficient community run space:

## Energy saving measures

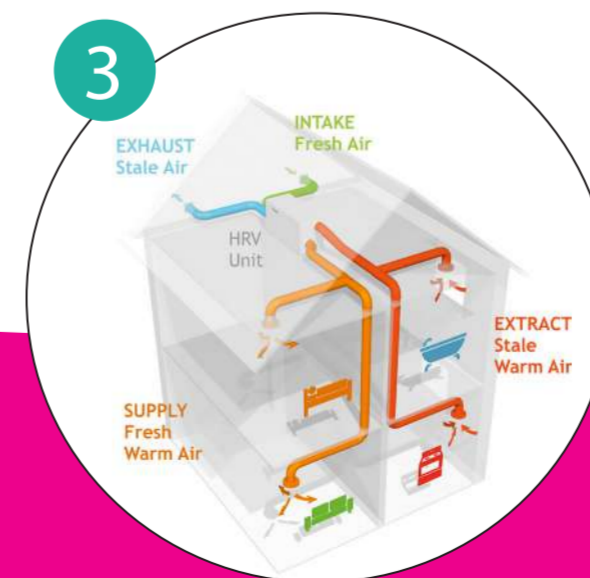
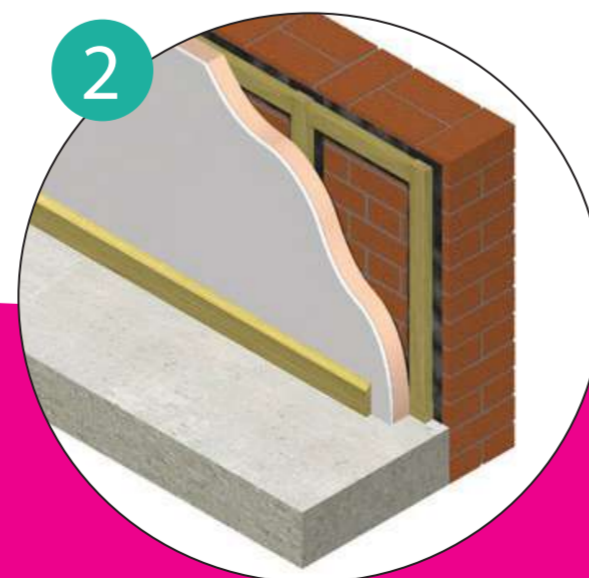
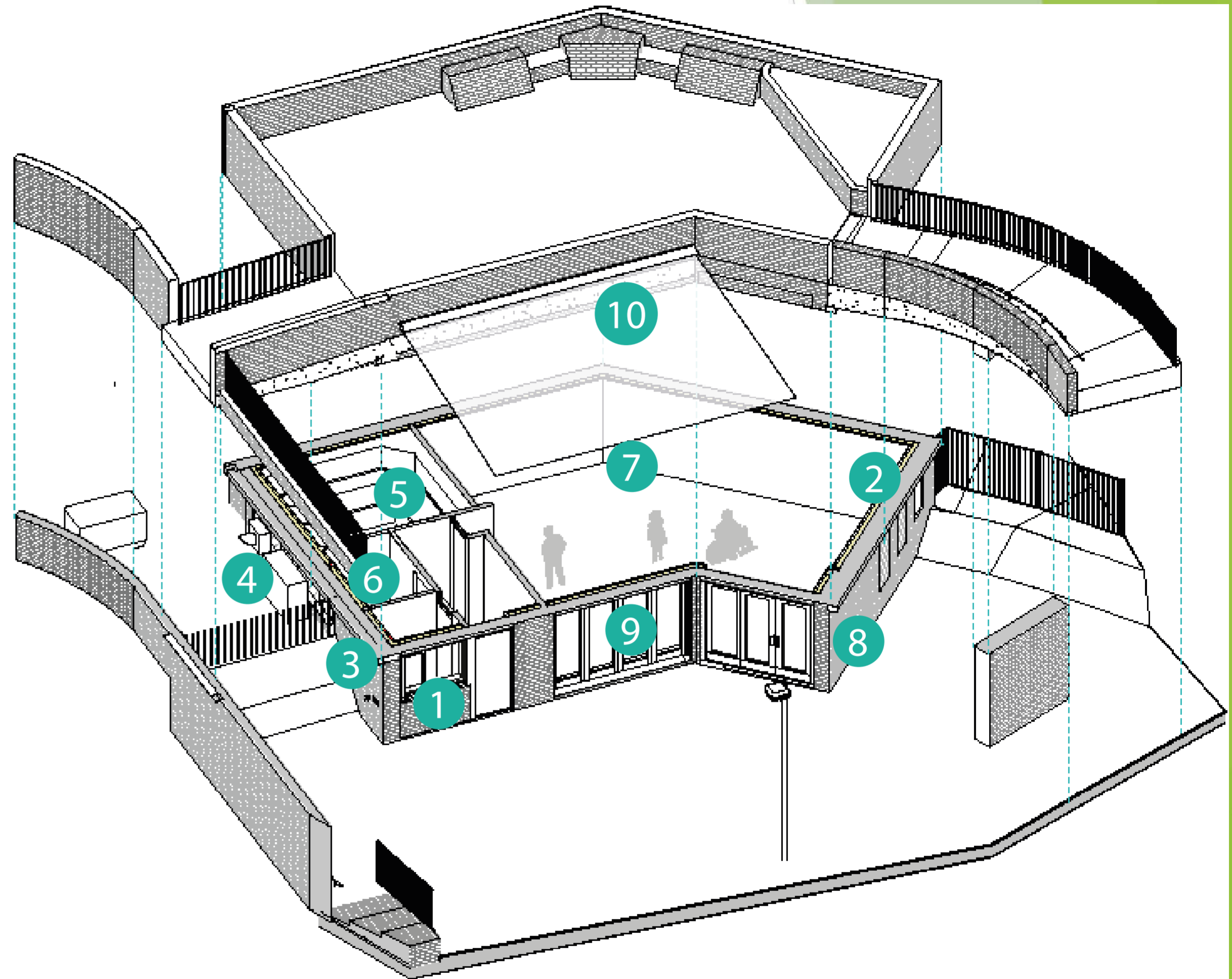
- 1 Triple-glazed windows
- 2 Internal wall, floor and roof insulation (non-combustible)
- 3 Mechanical ventilation with heat recovery (MVHR)
- 4 Air source heat pump to generate clean, green energy

## Internal improvements

- 5 New commercial-grade kitchen
- 6 New accessible bathroom
- 7 Full redecoration to create a relaxing and contemporary space

## External improvements

- 8 New external lighting
- 9 New bi-folding door to create a greater sense of space
- 10 New awning to enable greater use of outside space



A key part of the Lancaster West Refurbishment is co-design, and we want you to help us make key decisions about your space.

# New Commercial Kitchen

The existing domestic kitchen is an integral part of the community centre, but is small and outdated. The refurbishment provides an opportunity to expand and upgrade the space to a professional kitchen.

This will improve food hygiene standards and facilitate a wider range of activities such as community cooking classes.

## Key features

- Nova Design have proposed new, larger kitchen layout after discussion with users
- Stainless steel units
- Kitchen hatch made narrower and taller
- Heat lamps added to keep food hot
- Washable ceiling
- Community fridge to remain
- Remove gas and replace with electric and induction hob



Kitchen visuals provided by NOVA design

- |                                |                         |
|--------------------------------|-------------------------|
| 1 Two sinks                    | 5 Self-cleaning oven    |
| 2 Commercial dishwasher        | 6 Handwash basin        |
| 3 Commercial extraction canopy | 7 Refrigerated counters |
| 4 Induction hob                | 8 Heated gantry         |



# Accessibility

## New external lift

The existing building features a slippery, stepped access route externally which is not suitable for people with mobility issues. It is therefore not fit for purpose as it is not accessible to the community it serves.

To address this, an external lift is to be fitted to the north-east corner as part of separate works by LWNT.

## New accessible bathroom

In addition to the improved access, we will be replacing the two existing, cramped WCs with a single more accessible bathroom.

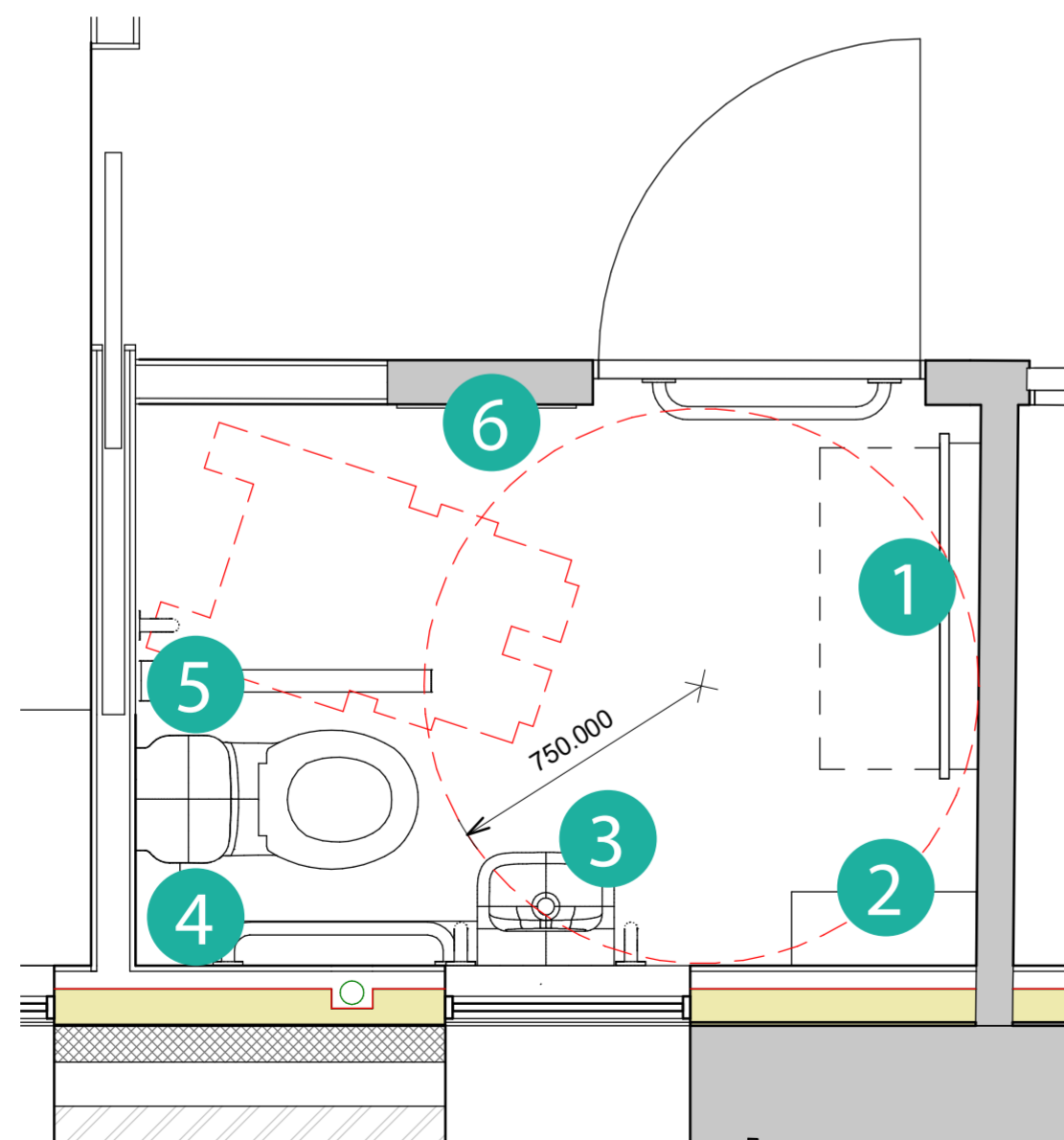


Existing stepped access

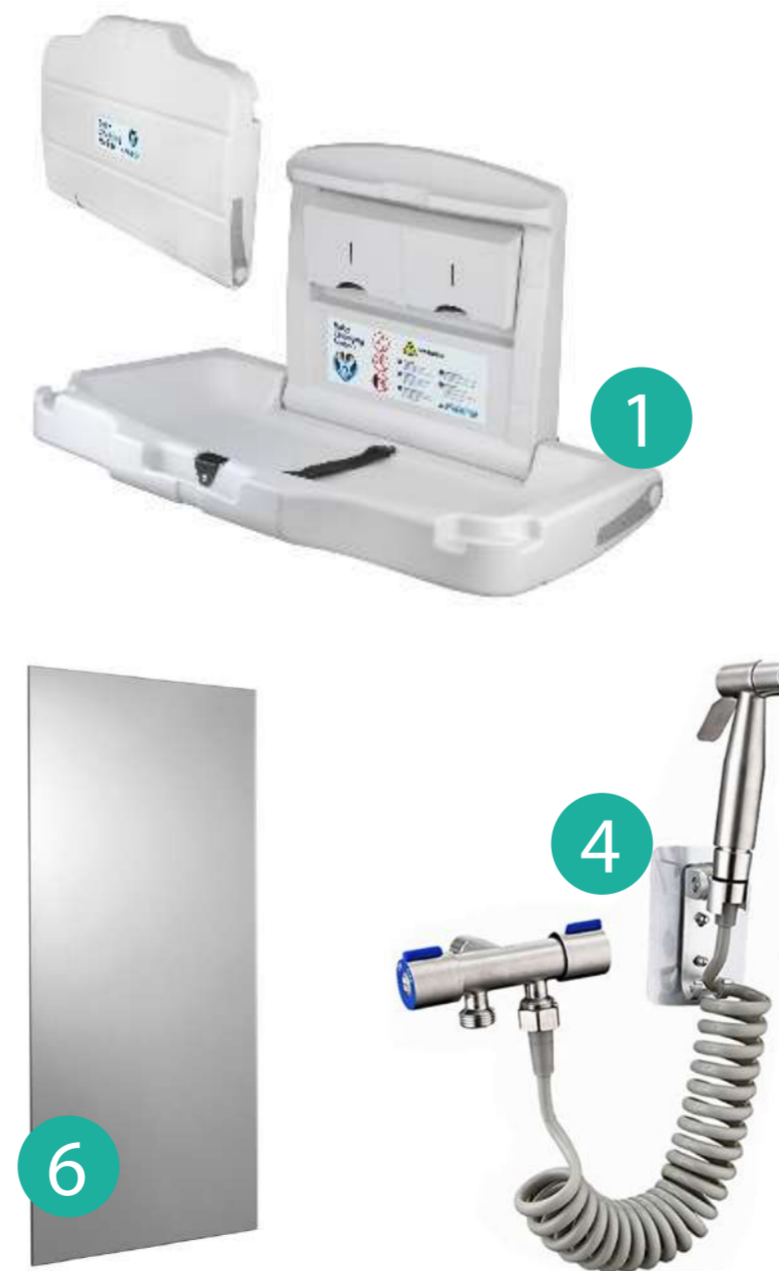
Existing toilets

## Key

- 1 Baby Changer
- 2 Shelf
- 3 Basin
- 4 Bidet hose
- 5 Stainless Steel grabrails
- 6 Mirror



Accessible bathroom floor plan



Accessible bathroom features



# External Finishes



New ambient lighting  
Wall Lights



Green Wall Lighting



Handrail lighting



RAL 7016

RAL 7015

RAL 7046

Window frame finish options  
Powder coated

31021

30941

Awning colour options

A key part of the Lancaster West Refurbishment is co-design, and we want you to help us make key decisions about your space.

Which external finish options do you prefer?

# Internal Finishes

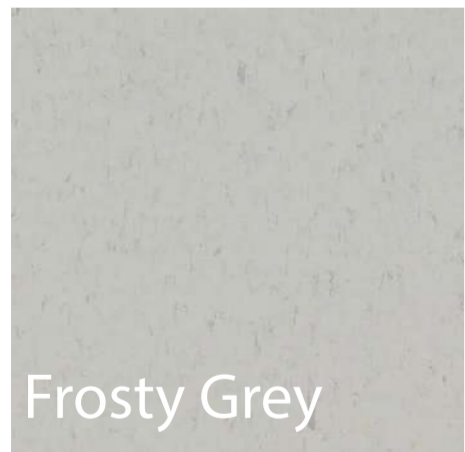


Exposed service ceiling

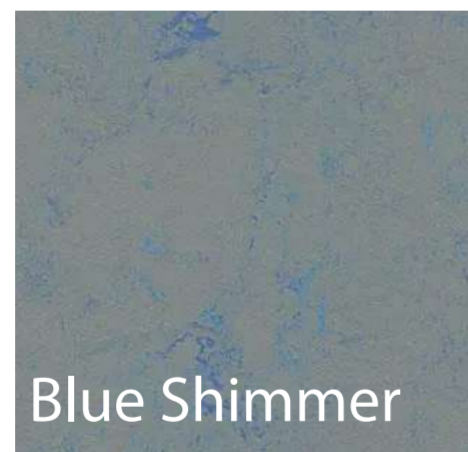


Closed ceiling

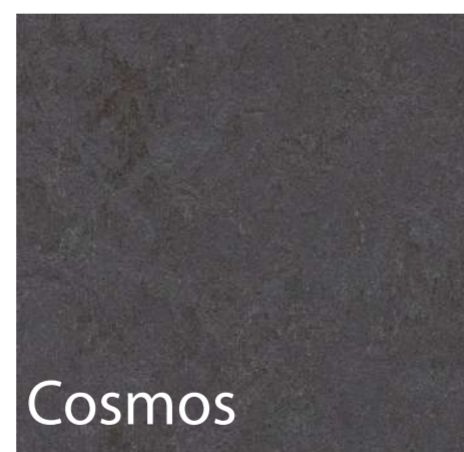
Ceiling finish options



Frosty Grey



Blue Shimmer



Cosmos

Floor finish options - Marmoleum



Mustard



Dark Green

Feature wall finish options  
Paint

A key part of the Lancaster West Refurbishment is co-design, and we want you to help us make key decisions about your space.

Which internal finish options do you prefer?

# External Visual



# Mechanical Ventilation with Heat Recovery

## Definition:

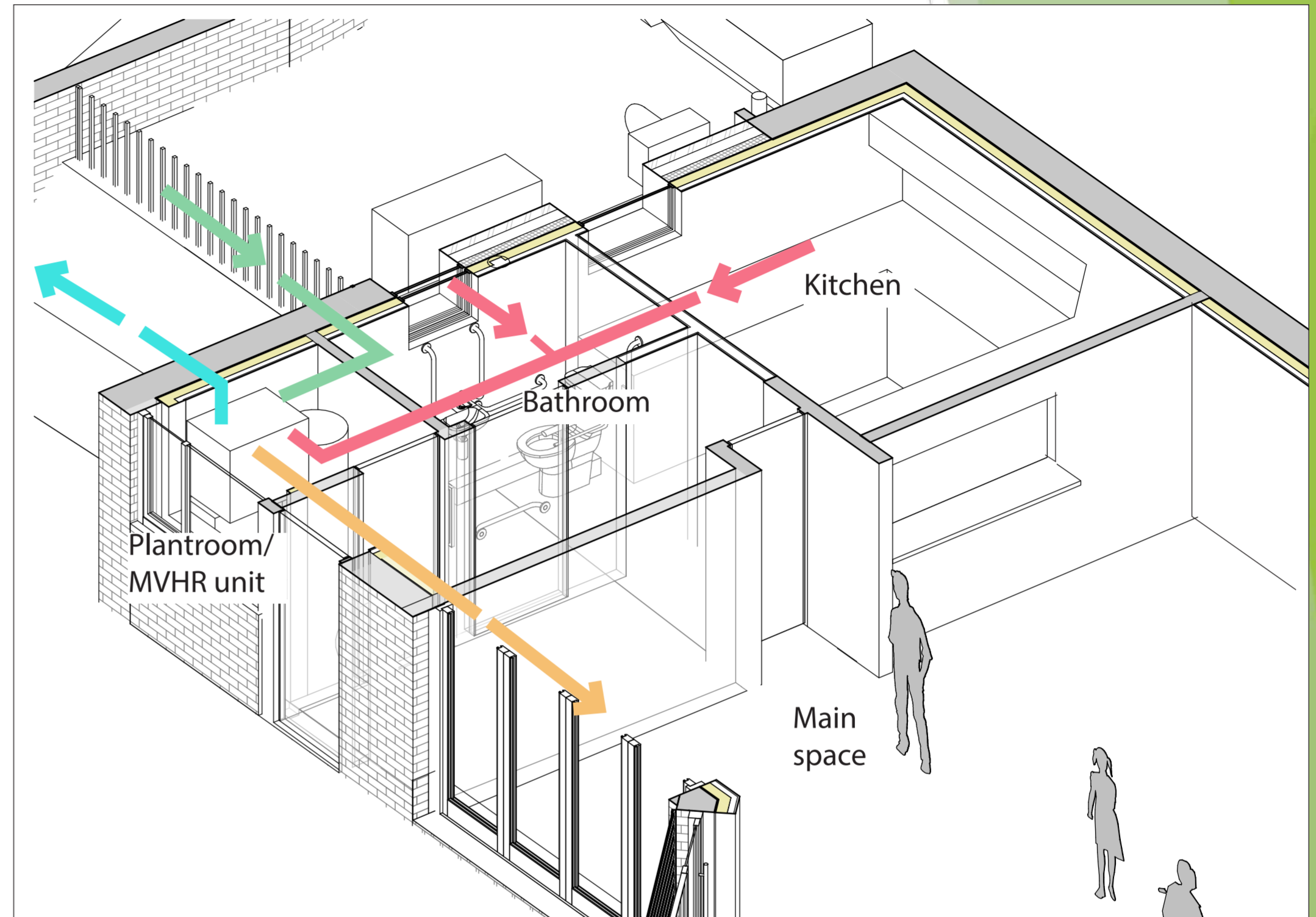
A mechanical ventilation with Heat Recovery (MVHR) unit brings in fresh air and pre-warms this with the heat from outgoing air. This fresh warmed air is then distributed to the main room, while stale air is extracted from kitchen and bathroom. Windows can still be opened, but the building will still work even if windows are kept shut.

## Existing Ventilation & Air Tightness Issues

- Heat loss through gaps in construction
- Damp issues across the centre

## New Ventilation System

- MVHR unit located in plant room at front of building, behind viewing panel.
- MVHR is planned to be rolled out across many homes within the Lancaster West Estate. The MVHR system at NKRC will be used to help residents learn more about the MVHR system and how it will look in their homes.
- Minimal length, non-combustible ductwork localised to circulation areas.
- Ceiling/high level inlets/outlets on the wall of each room.
- Complete line of air tightness around building to reduce heat loss.



MVHR unit

## Legend

- Intake – fresh air
- Supply – fresh warm air
- Extract – stale warm air
- Exhaust – Stale air

# Air Source Heat Pump

## Definition:

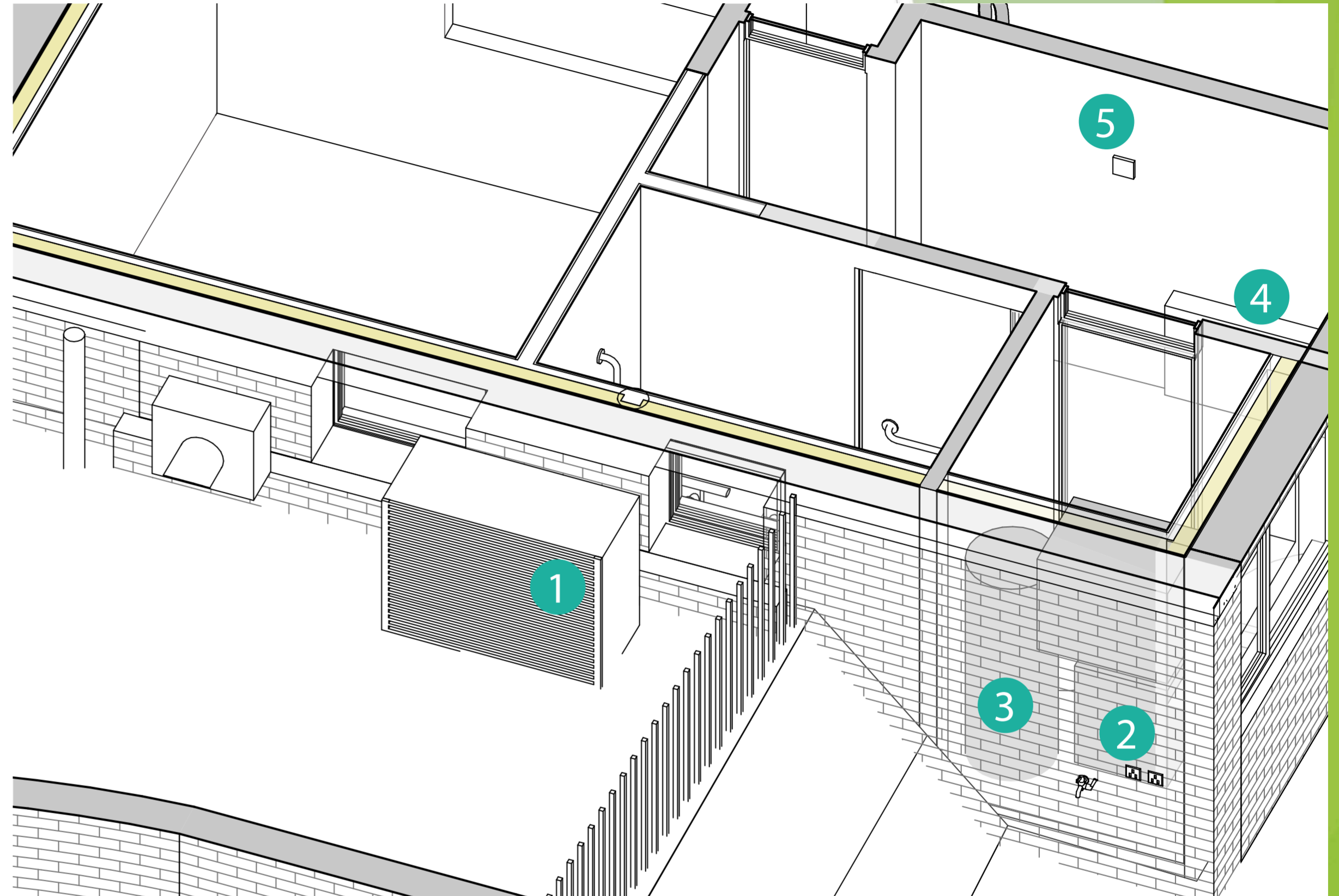
Air Source Heat pumps use energy extracted from outside air to provide hot water & heating. Using them will reduce the carbon footprint and help save money on energy bills.

## Existing Heat System

The existing building is heated by gas a boiler, this burns gas to heat hot water, which is then provided to taps and to radiators which heat the centre. Gas is currently supplied via an external pipe running up the building's north facade.

## New Heat System

The new air source heat pump will replace the existing gas supply. It is suggested that the pump is positioned on the south facade behind the fence and next to the new toilet.



## Key

- 1 External Condenser
- 2 Heat exchanger
- 3 Cylinder
- 4 Radiator
- 5 Controller



External Condenser



Heat Exchanger



Cylinder



Controller



Low Surface  
Temperature  
Radiator