

**what kind of
activities would
you like to see in
this space?**

**what kind of food
would you like to
grow in this
garden?**

**which seating
option do you like
the most? why?**

**individual
beds**

**collective
growing**

**what would you
like the garden to
be called?**

**Verity Sensory
Garden**

**Verity Garden of
Life**

feedback

**which is your
favourite colour
scheme?**

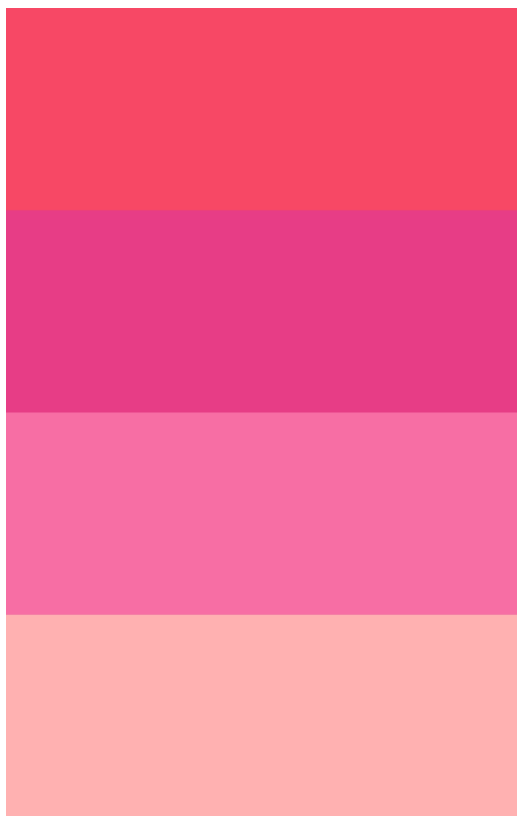


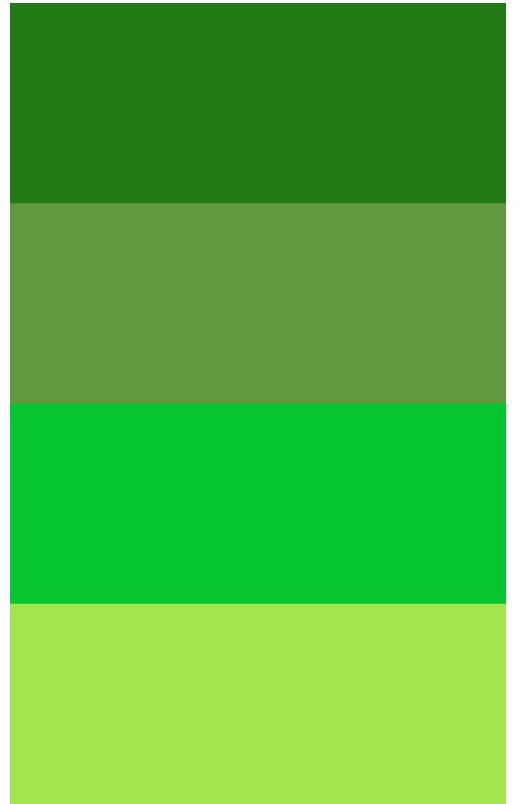
VERITY CLOSE 1:100 @ A3

Proposed with green entry ring, swale, gym equipment, pagoda & community raised beds, with edible green boundary.

- | | |
|------------------------------------|----------------------------|
| 1. Green Entry Ring | 13. Hammock Tripods |
| 2. Interactive Swales | 14. Basket Swing |
| 3. Accessible Bridge | 15. Existing Light |
| 4. Existing Steel Light | 16. Picnic table & benches |
| 5. Sealing Blocks around perimeter | 17. Covered Space / Pagoda |
| 6. Bulb Zone | 18. Storage Block |
| 7. New Fruit Tree | 19. Existing hedge |
| 8. 'Core Trustler' | 20. Raised Community Beds |
| 9. 'Steel Workout' | 21. Edible Green Perimeter |
| 10. 'Air Walker' | 22. Existing Brick Wall |
| 11. 'Cross Trainer' | |
| 12. Willow Tunnel | |











interactive swale



basket swing



willow tunnel



covered space



hammocks



edible perimeter

URBAN GROWTH



entrance walkway

URBAN GROWTH