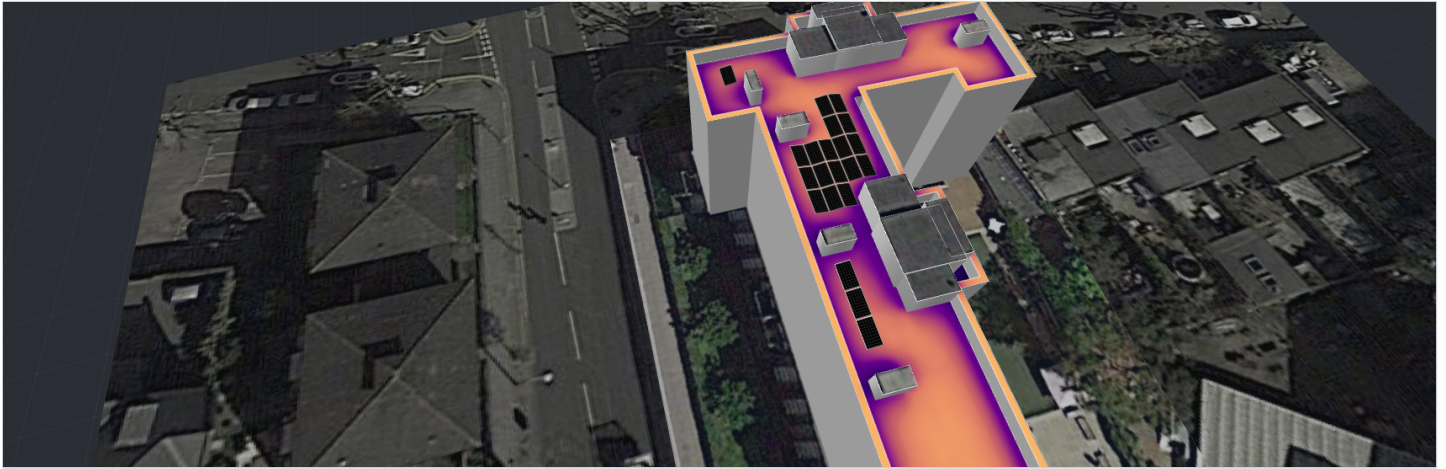


**BRAMLEY HOUSE ARRAY 2 (14-25)**

Bramley Road, London, W10 6SX, United Kingdom | 5 Jan 2022



**SYSTEM OVERVIEW**

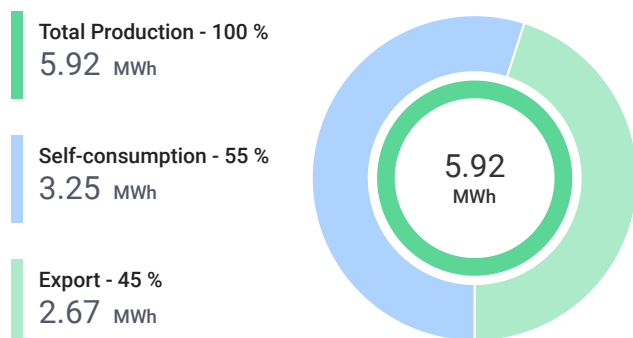
**21** PV modules | 
 **1** Inverters | 
 **21** Optimizers | 
 **1** Batteries

**SIMULATION RESULTS**

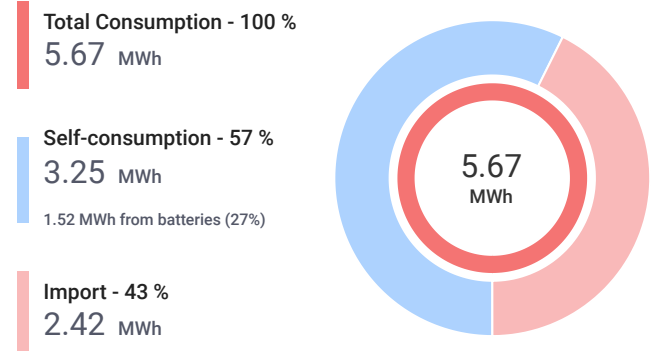
 Installed DC Power <b>8.40 kWp</b>	 Max Achieved AC Power <b>5.00 kW</b>	 Annual Energy Production <b>5.92 MWh</b>	 CO2 Emission Saved <b>1.38 t</b>	 Equivalent Trees Planted <b>63</b>
---	---	---	---	---

 Max Achieved DC Power <b>7.36 kW</b>	 DC/AC Oversizing <b>147 %</b>	 Max Active AC Power <b>5.00 kW</b>	 Performance Ratio <b>73 %</b>	 Performance Index <b>705 kWh/kWp</b>
---	--------------------------------------	---	--------------------------------------	---

**SYSTEM PRODUCTION**



**CONSUMPTION**

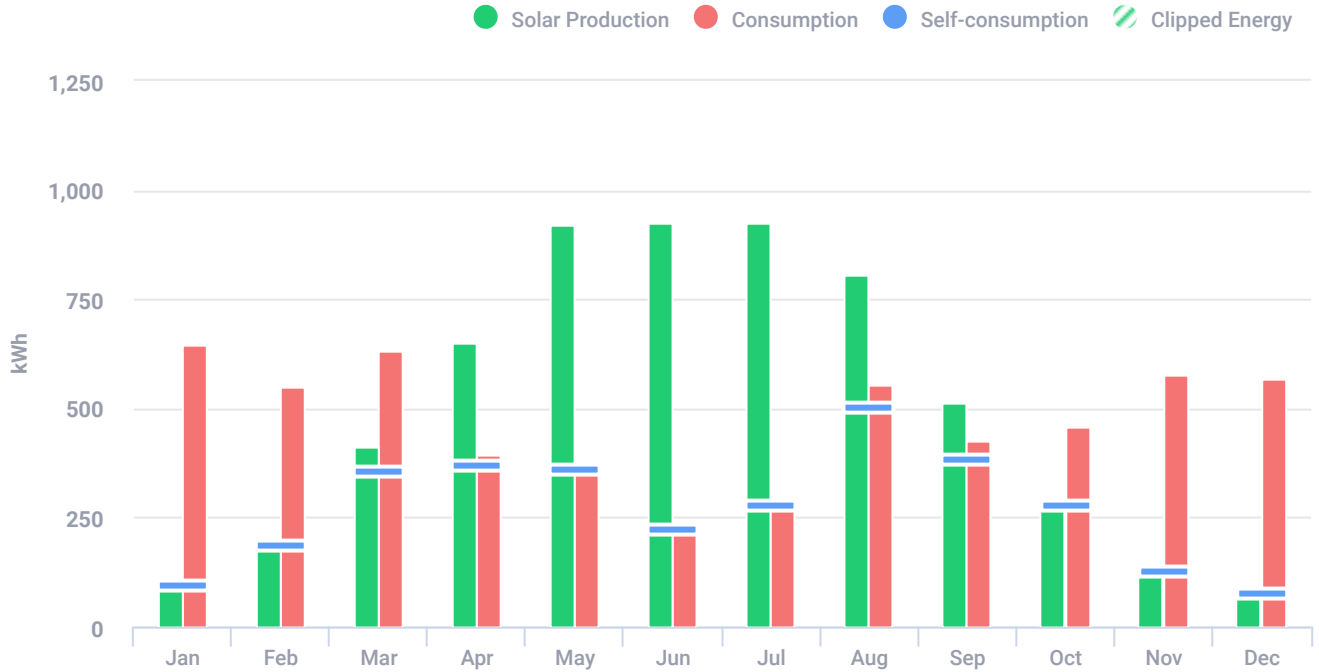


## BRAMLEY HOUSE ARRAY 2 (14-25)

Bramley Road, London, W10 6SX, United Kingdom | 5 Jan 2022



### ESTIMATED MONTHLY ENERGY



Total clipped energy: 0.36%

Month	Solar Production (kWh)	Consumption (kWh)	Self-consumption (kWh)	Clipped Energy (kWh)
Jan	97	645	97	-
Feb	190	550	190	-
Mar	414	631	357	-
Apr	652	396	370	4
May	920	363	362	2
Jun	926	223	223	3
Jul	923	279	279	6
Aug	804	556	505	7
Sep	512	427	385	-
Oct	282	456	281	-
Nov	128	579	128	-
Dec	77	566	77	-

### PV MODULES

# Module	Model	Peak power	Racking type	Orientation	Azimuth	Tilt
10	JinkoSolar Holding Co. Ltd., JKM400N-6RL3-B* (user-defined)	4 kWp			94°	10°

## BRAMLEY HOUSE ARRAY 2 (14-25)

Bramley Road, London, W10 6SX, United Kingdom | 5 Jan 2022



### PV MODULES (CONTINUED)

# Module	Model	Peak power	Racking type	Orientation	Azimuth	Tilt
10	JinkoSolar Holding Co. Ltd., JKM400N-6RL3-B* (user-defined)	4 kWp			274°	10°
1	JinkoSolar Holding Co. Ltd., JKM400N-6RL3-B* (user-defined)	0.4 kWp			274°	10°
<b>Total:</b>	<b>21</b>	<b>8.4 kWp</b>				

### BILL OF MATERIALS (BOM)

Items	Quantity
SE5000H	1
P401	21
SolarEdge Energy Bank 10kWh	1
JKM400N-6RL3-B*	21

### ELECTRICAL DESIGN

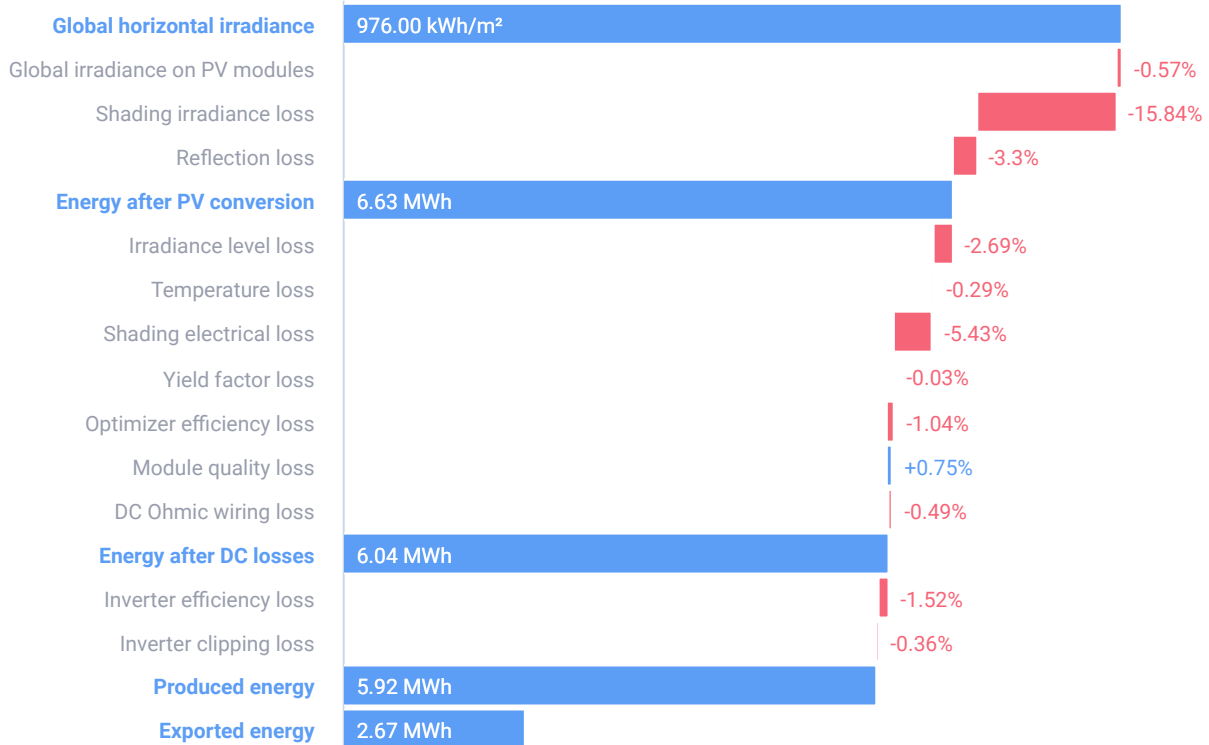
Inverters & Storage	Strings per inverter	Optimizers per string	PV modules per string
1 x SE5000H 7.36kW   147% 1 x SolarEdge Energy Bank 10kWh	1 x string	21 x P401	21

## BRAMLEY HOUSE ARRAY 2 (14-25)

Bramley Road, London, W10 6SX, United Kingdom | 5 Jan 2022



### SYSTEM LOSS DIAGRAM



### SIMULATION PARAMETERS



#### LOCATION & GRID

Time zone	GMT (London)
Weather station	Southwark (8.28 km away)
Station altitude	11 m
Station data source	Meteonorm 7.1
Grid	400V L-L, 230V L-N



#### LOSS FACTORS

Near shading	Enabled
Albedo	0.20
Soiling/Snow	0%
Incidence angle modifier (IAM), ASHRAE b0 param.	0.05
Thermal loss factor U <sub>c</sub> (const) Flush mount	20
Thermal loss factor U <sub>c</sub> (const) Tilted	29
LID loss factor	0%
System unavailability	0%