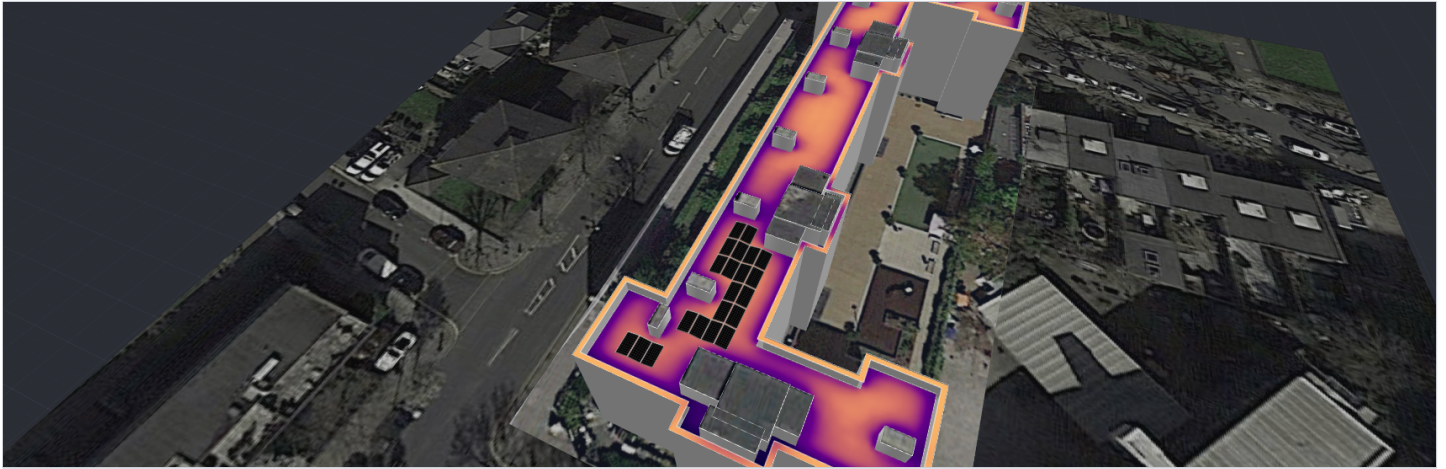


BRAMLEY HOUSE ARRAY 4 (38-44)

Bramley Road, London, W10 6SX, United Kingdom | 5 Jan 2022



SYSTEM OVERVIEW



21 PV modules



1 Inverters



21 Optimizers



1 Batteries

SIMULATION RESULTS



Installed DC Power

8.40 kWp



Max Achieved AC Power

5.00 kW



Annual Energy Production

6.03 MWh



CO2 Emission Saved

1.4 t



Equivalent Trees Planted

64



Max Achieved DC Power

7.36 kW



DC/AC Oversizing

147 %



Max Active AC Power

5.00 kW



Performance Ratio

74 %



Performance Index

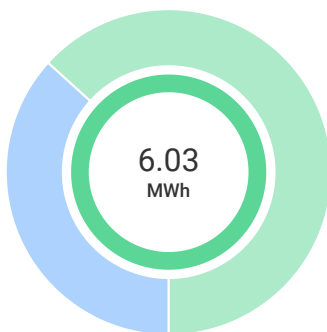
717 kWh/kWp

SYSTEM PRODUCTION

Total Production - 100 %
6.03 MWh

Self-consumption - 37 %
2.21 MWh

Export - 63 %
3.81 MWh

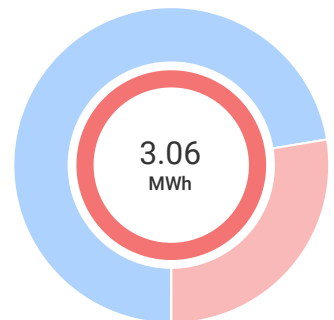


CONSUMPTION

Total Consumption - 100 %
3.06 MWh

Self-consumption - 72 %
2.21 MWh
1.15 MWh from batteries (38%)

Import - 28 %
843.91 kWh

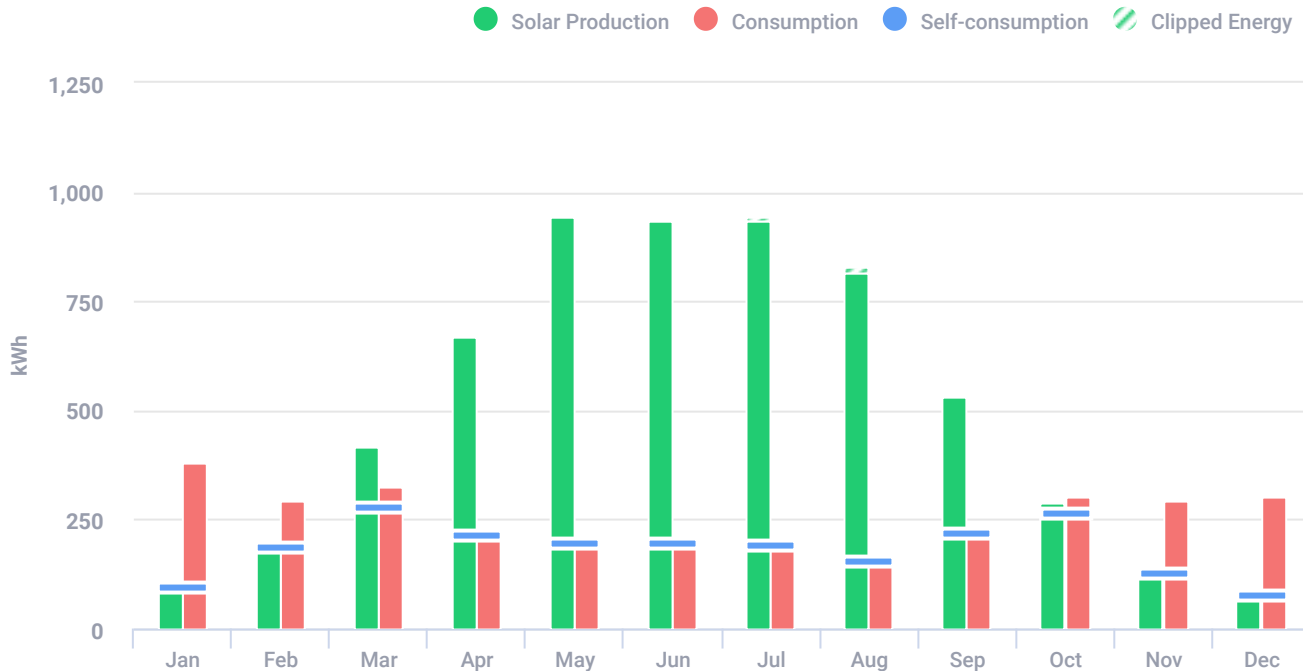


BRAMLEY HOUSE ARRAY 4 (38-44)

Bramley Road, London, W10 6SX, United Kingdom | 5 Jan 2022



ESTIMATED MONTHLY ENERGY



Total clipped energy: 0.5%

| Month | Solar Production (kWh) | Consumption (kWh) | Self-consumption (kWh) | Clipped Energy (kWh) |
|-------|------------------------|-------------------|------------------------|----------------------|
| Jan | 98 | 378 | 98 | - |
| Feb | 189 | 291 | 189 | - |
| Mar | 415 | 324 | 280 | - |
| Apr | 669 | 215 | 215 | 5 |
| May | 942 | 195 | 195 | 3 |
| Jun | 935 | 195 | 195 | 4 |
| Jul | 935 | 192 | 192 | 7 |
| Aug | 817 | 156 | 156 | 10 |
| Sep | 530 | 219 | 219 | - |
| Oct | 286 | 302 | 266 | - |
| Nov | 130 | 291 | 130 | - |
| Dec | 79 | 300 | 79 | - |

PV MODULES

| # Module | Model | Peak power | Racking type | Orientation | Azimuth | Tilt |
|----------|---|------------|--------------|-------------|---------|------|
| 10 | JinkoSolar Holding Co. Ltd., JKM400N-6RL3-B* (user-defined) | 4 kWp | | | 94° | 10° |

BRAMLEY HOUSE ARRAY 4 (38-44)

Bramley Road, London, W10 6SX, United Kingdom | 5 Jan 2022



PV MODULES (CONTINUED)

| # Module | Model | Peak power | Racking type | Orientation | Azimuth | Tilt |
|---------------|---|------------|--------------|-------------|---------|------|
| 11 | JinkoSolar Holding Co. Ltd., JKM400N-6RL3-B* (user-defined) | 4.4 kWp | | | 274° | 10° |
| Total: | 21 | 8.4 kWp | | | | |

BILL OF MATERIALS (BOM)

| Items | Quantity |
|-----------------------------|----------|
| SE5000H | 1 |
| P401 | 21 |
| SolarEdge Energy Bank 10kWh | 1 |
| JKM400N-6RL3-B* | 21 |

ELECTRICAL DESIGN

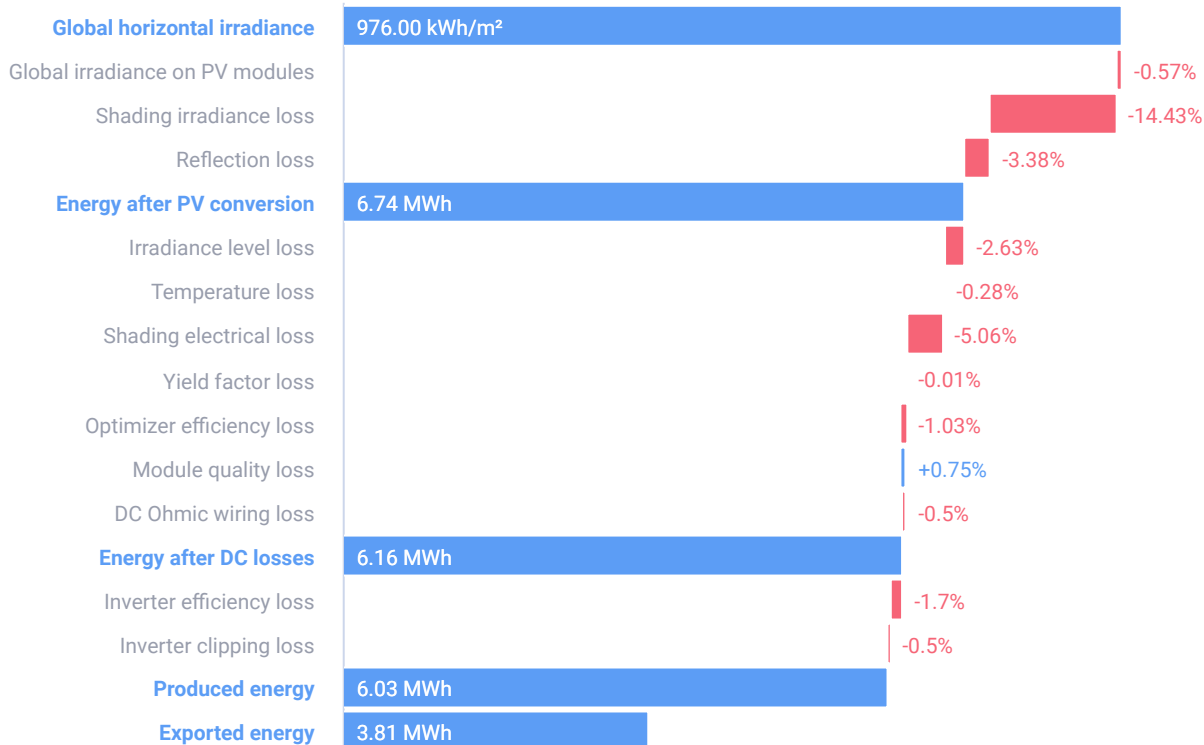
| Inverters & Storage | Strings per inverter | Optimizers per string | PV modules per string |
|--|----------------------|-----------------------|-----------------------|
| 1 x SE5000H 7.36kW 147% 1 x SolarEdge Energy Bank 10kWh | 1 x string | 21 x P401 | 21 |

BRAMLEY HOUSE ARRAY 4 (38-44)

Bramley Road, London, W10 6SX, United Kingdom | 5 Jan 2022



SYSTEM LOSS DIAGRAM



SIMULATION PARAMETERS



LOCATION & GRID

| | |
|---------------------|--------------------------|
| Time zone | GMT (London) |
| Weather station | Southwark (8.28 km away) |
| Station altitude | 11 m |
| Station data source | Meteonorm 7.1 |
| Grid | 400V L-L, 230V L-N |



LOSS FACTORS

| | |
|--|---------|
| Near shading | Enabled |
| Albedo | 0.20 |
| Soiling/Snow | 0% |
| Incidence angle modifier (IAM), ASHRAE b0 param. | 0.05 |
| Thermal loss factor U _c (const) Flush mount | 20 |
| Thermal loss factor U _c (const) Tilted | 29 |
| LID loss factor | 0% |
| System unavailability | 0% |