The background features abstract, overlapping green geometric shapes in various shades, creating a modern and dynamic feel. The shapes are primarily triangles and polygons, some with gradients, set against a white background.

Net-Zero and PAS2035 Compliance Update

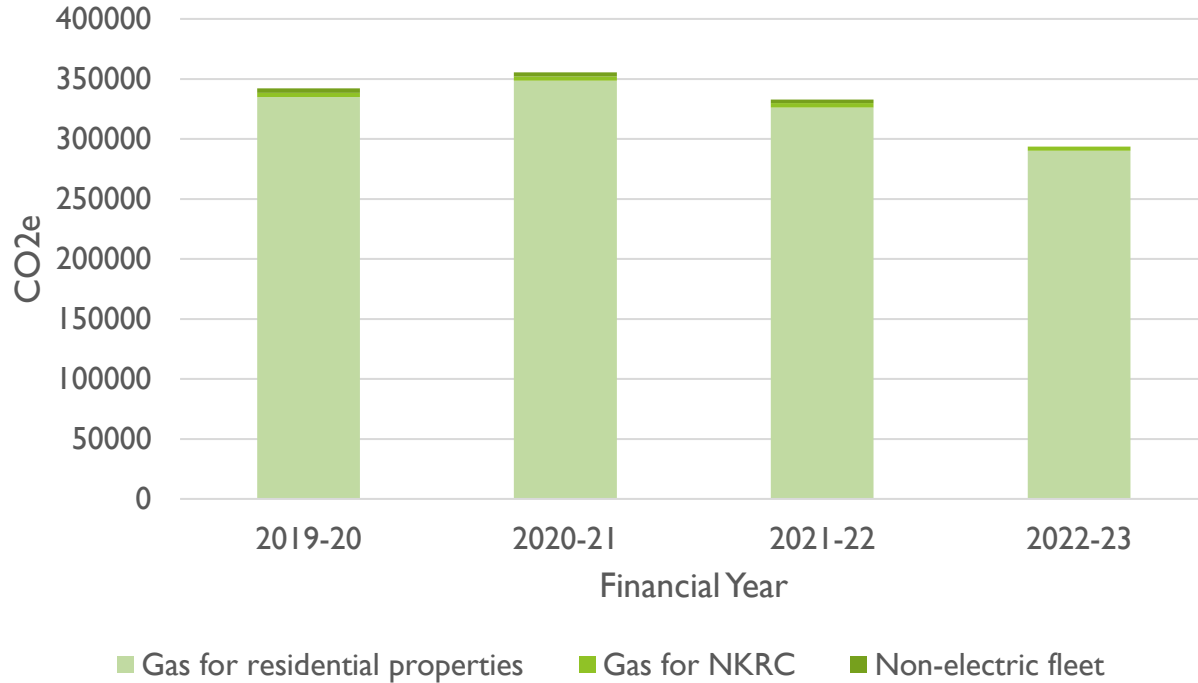
Hannah Smith, Sustainability Programme Manager

Removing gas has saved over 44 tonnes of CO2 to date...

28%

overall reduction in emissions since 2019!

Scope I emissions



Goodbye
gas

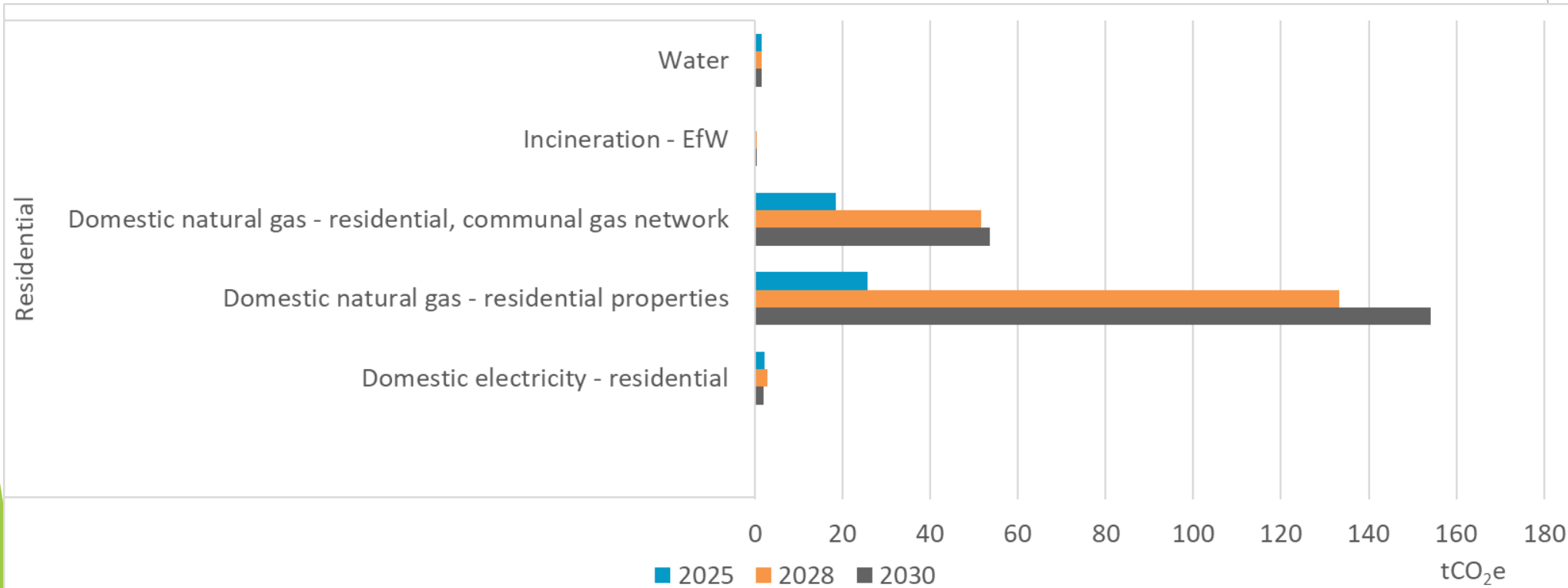
229 induction hobs installed so far

103 gas meter removed so far

9298.087

**Kg CO2
Carbon reduction per
year
+ 81.206 since last
month**

...and is expected to contribute the biggest reduction in emissions by 2030



Social Housing Decarbonisation Fund & PAS2035

New grant funding agreements signed

- £7.56m for borough-wide wave 2 projects (£671k plus admin for LWVE)
- £15.8m for previous Demo & wave 1 projects (lots 1 – 3, plus pilots in lots 5 & 6)

£1.66m claimed in December (borough-wide) under new grant funding agreements

- £1.36m of this is LWVE
- £1.25m to be claimed in January

PAS2035 consultants being onboarded

- Osmosis & Ken Negus reviewing documentation & processes as PAS2035 oversight consultants
- Baily Garner now working on Retrofit Coordination of Walkways roof works
- Completing procurement for remaining Retrofit Coordinators (lot 1, lot 2, Bramley)

86% Retrofit Assessments complete

	Complete	Outstanding	Grand Total	% Complete
Bramley House	37	8	45	84%
Lot 1	314	54	368	85%
Lot 2	186	21	207	90%
Lot 3	70	9	79	89%
Lot 5	32	4	36	89%
Lot 6	42	14	56	75%
Grand Total	681	110	791	86%

Future Neighbourhoods

Funding update - secured £1.25m additional funding through phase 3!

- LWE projects include:
 - Camelford & Clarendon solar - £70,000
 - Green Skills Academy - £50,000
 - Treadgold landscape & SUDs - £30,000
 - Morland landscape & SUDs - £30,000
 - Bramley garden / landscape - £15,000
 - Energy advice - £20,000
 - Circular economy - £30,000

Recent project completions:

- Secret Garden green screen
- Camelford Court solar PV

Strategy:

- Nearly complete & ready for consultation following co-design with 300+ residents

Energy advice & resident support



- 100+** accessed energy advice service
- 3** accessing ongoing support
- 19** 1-2-1 energy advice sessions being booked



- 160** small energy efficiency measures issued to residents (LED bulbs, draught excluders, showerbobs)



- 1** delivery partnership established (Groundwork) and
- 2** new funding support (HACT Fuel Fund, Future Neighbourhoods)



- 19** units (air quality monitors & thermal imaging cameras) loaned through GSA equipment library

'I was very happy to be loaned this device to conduct some research in my home. I was able to determine where insulation was lacking in my ceiling/roof. I can now add some insulation at my convenience which in turn keeps my home warmer and my energy bills down.'

- Tim (LWE resident)



- 4** free bicycle repair workshops held for residents in partnership with Bikeworks



- 42** bicycles fixed in total



- 31** old unused bikes donated to The Bike Project



- 40** attendees at Air Quality Sustainability Series

Landscape

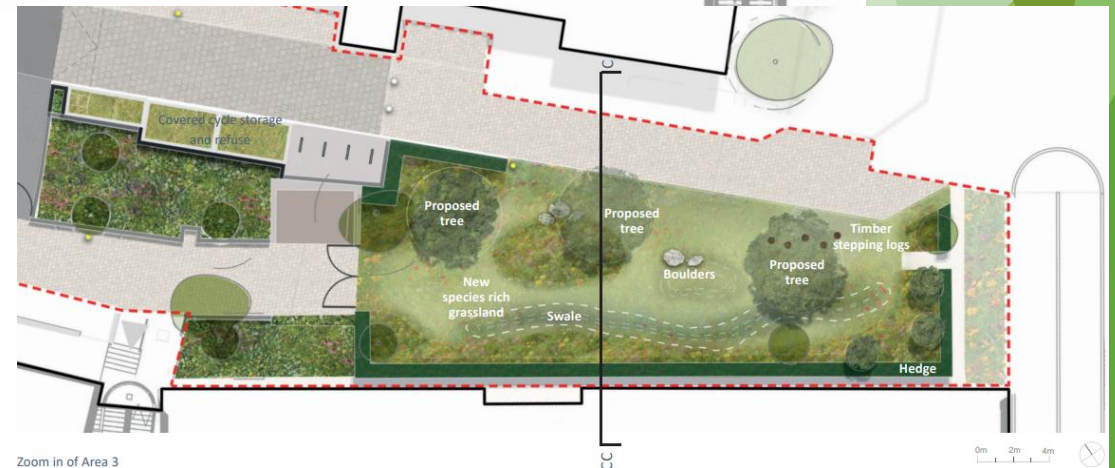
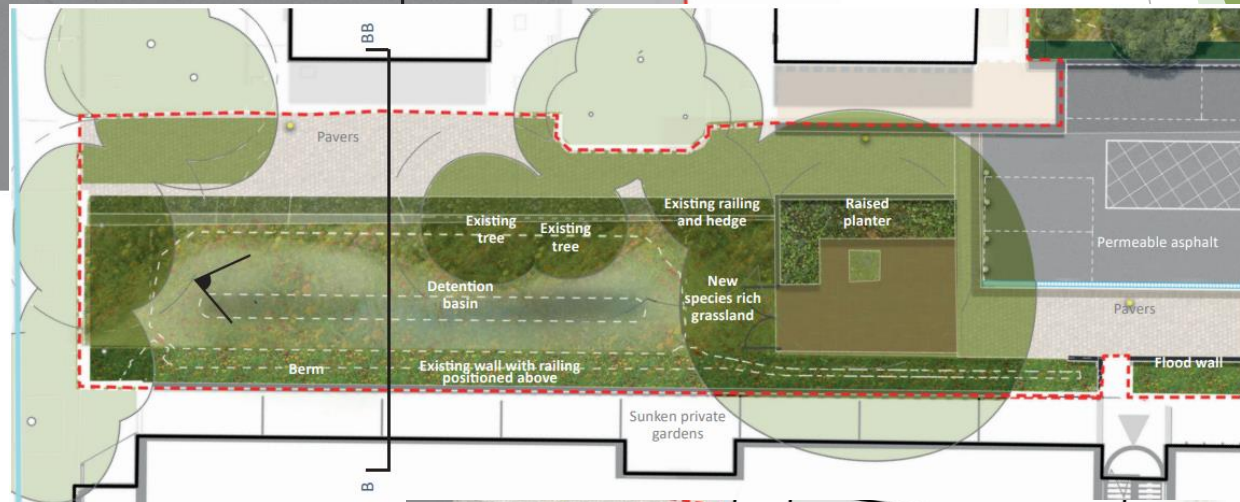
Lots 2&3



23 attendees across 2 engagement events



19 residents completed online and paper surveys



Jan 2024
Stage 3 designs complete

Feb-Aug 2024
Procurement for contractor

March 2025
Phase I completion

Post-Refurb
Phase 2+ construction

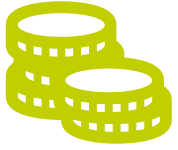


Jan 2024
Planning application submitted

Oct 2024
Construction of Phase I

March 2025
Thames Water funding deadline

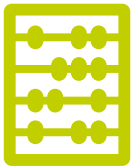
Landscape Sitewide



£40,000 grant
funding secured

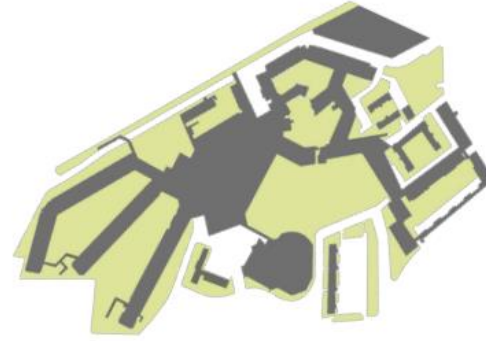


2 bids in progress



4 tenders returned-
successful bidder will be
appointed following
approval

▲ 1967
The 'garden estate' vision



▲ 1967-2022
*Vision partially realised,
partially in-filled.*



▲ 2022
*Green spaces appropriated,
largely privatised*

