

Future Neighbourhood Partnership Board

23 February 2023



Future Neighbourhood Partnership Board

Terms of Reference

The role of this Partnership Board is to:

- **Provide a forum** for representatives of organisations active in the local community **to meet to discuss opportunities** the development and delivery of projects that impact the local area.
- Identify, prioritise and **support the delivery of community projects.**
- **Share and monitor the outcomes from projects that have a community impact.**
- **Facilitate resident consultation** and engagement in co-designing and delivering community projects.
- **Update on community projects relating to the four thematic areas.**

Agenda

1. Welcome, James Caspell

2. Future Neighbourhoods Fund, Hannah Smith

3. Update on Community Projects

3.1. Education and Economic Development

- Employment and Training hub, Felicity Maries, Abbas Dadou, Stewart Hall
- Green Skills Academy, Yvette Freestone

3.2 Health and Wellbeing

- JSNA, Clare Lyons-Baker

3.3 Sustainability and Green Spaces

- Landscape Strategy, Sarah Cross

3.4 Connected Communities

- LancWest Connects, Phoebe Cramer

4. Future Neighbourhood Partnership Workshop, Aisha Butera



Welcome

Future Neighbourhoods Fund Hannah Smith



Future Neighbourhoods Fund



Notting Dale 2030

Notting Dale is one of two neighbourhoods selected by the Mayor of London to deliver **environmental projects** and **co-design a vision and action plan** through the **Future Neighbourhoods 2030** programme.

We want Notting Dale to become an exemplar eco-neighbourhood that is greener, fairer, and more climate resilient for all.

Our 5 themes:

1. Fabric First – Notting Dale Goes Net Zero
2. Powering Up for the People – Generating Clean, Green, and Local Energy
3. Creating a cleaner and healthier Notting Dale
4. Building a Notting Dale Nature Recovery Network
5. Delivering new green jobs and skills in a circular economy



LANCASTER WEST
NEIGHBOURHOOD TEAM

W11

Future Neighbourhoods Fund



Progress Update

30 phase 1 projects underway / completed:

- Newly insulated roofs co-designed and delivered at Clarendon Walk & Talbot Walk, ready for the installation of solar PV
- New community kitchen gardens established across the ward
- Avondale Park ecological improvements by Groundwork and volunteers
- Green Skills Academy established for RBKC staff, residents, and contractors
- Social cycling, cycling training, and bike repair training run by Bikeworks

Developing a community-led strategy & action plan:

- Arup selected to work with the community to develop the Notting Dale Future Neighbourhood vision and action plan
- Inception meeting held with residents on 18th January to kickstart vision programme and agree approach to co-design



Future Neighbourhoods Fund



New Projects

- Camelford Court solar panels
- Household goods redistribution and upcycling scheme
- Community warm spaces programme
- Climate change awareness campaign
- Schools decarbonisation at Thomas Jones and Colville Primary Schools
- Active travel programme – cycling, cycle and bike repair training, and community rides
- Community kitchen gardens, cooking and growing workshops
- Henry Dickens double glazed windows
- Bramley House smart cities pilot
- Stoneleigh Place / Street sustainable urban drainage project
- Allom & Barlow sustainable urban drainage feasibility and design
- Silchester solar panels



Future Neighbourhoods Fund



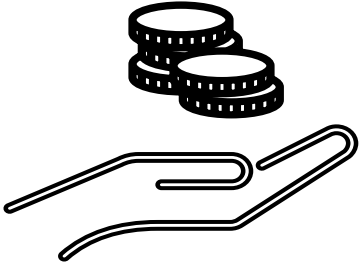
Opportunities

- Access / signpost to the services and projects currently being delivered
- Share your priorities for a future Notting Dale and shape the Future Neighbourhoods strategy – keep an eye out for **upcoming engagement events!**
- Get in touch hannah2.smith@rbkc.gov.uk or nottingdale2030@rbkc.gov.uk



Future Neighbourhood Partnership Board

Update on Community Projects



Education and Economic Development

Employment and Training Hub,
Felicity Maries,
Abbas Dadou and
Stewart Hall



Health and Wellbeing



Sustainability and a Greener Estate



Connected Community



LANCASTER WEST
NEIGHBOURHOOD TEAM



"We really like the layout of the room...the equipment was easy to use."

"Absolutely loved the space - really light and clean, a great space for the students."

Welcome to our
Lanc West
Employment and
Training space!

LWRA 

LANCASTER WEST
NEIGHBOURHOOD TEAM

WT11

Employment & Training Hub

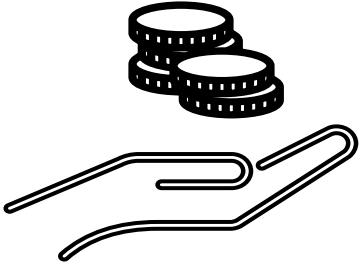
Proposed schedule/pilots*

Monday	Tuesday	Wednesday	Thursday	Friday	Saturday
Homemade Teachers CIC	Interview Skills w/ St Giles	<i>ICT Basic Skills Clement James</i>	<i>Nova Group workshops</i>	<i>Business admin Morley College</i>	Screen Community Course
<i>GSA: Level 2 Domestic Retrofit</i>	<i>Morley College short course</i>	<i>Adobe Illustrator Course</i>	Morley College Photography	<i>Study space for students</i>	

*Italic entries are suggested or tentative workshops

Future Neighbourhood Partnership Board

Update on Community Projects



Education and Economic Development

Green Skills Academy, Yvette Freestone



Health and Wellbeing



Sustainability and a Greener Estate



Connected Community



Green Skills
ACADEMY



Background

The Green Skills Academy (GSA) was set up by Lancaster West Neighbourhood Team (LWNT) to support the Council's pledge to make Lancaster West estate carbon neutral by 2030, and for the whole borough to be carbon neutral by 2040. GSA will help residents, staff and contractors acquire the skills and experience needed to:

- Gain a career in the green sector
- Progress whilst in-work
- Learn future skills in high job-growth sectors
- Learn sustainability practices in the home and in the workplace.

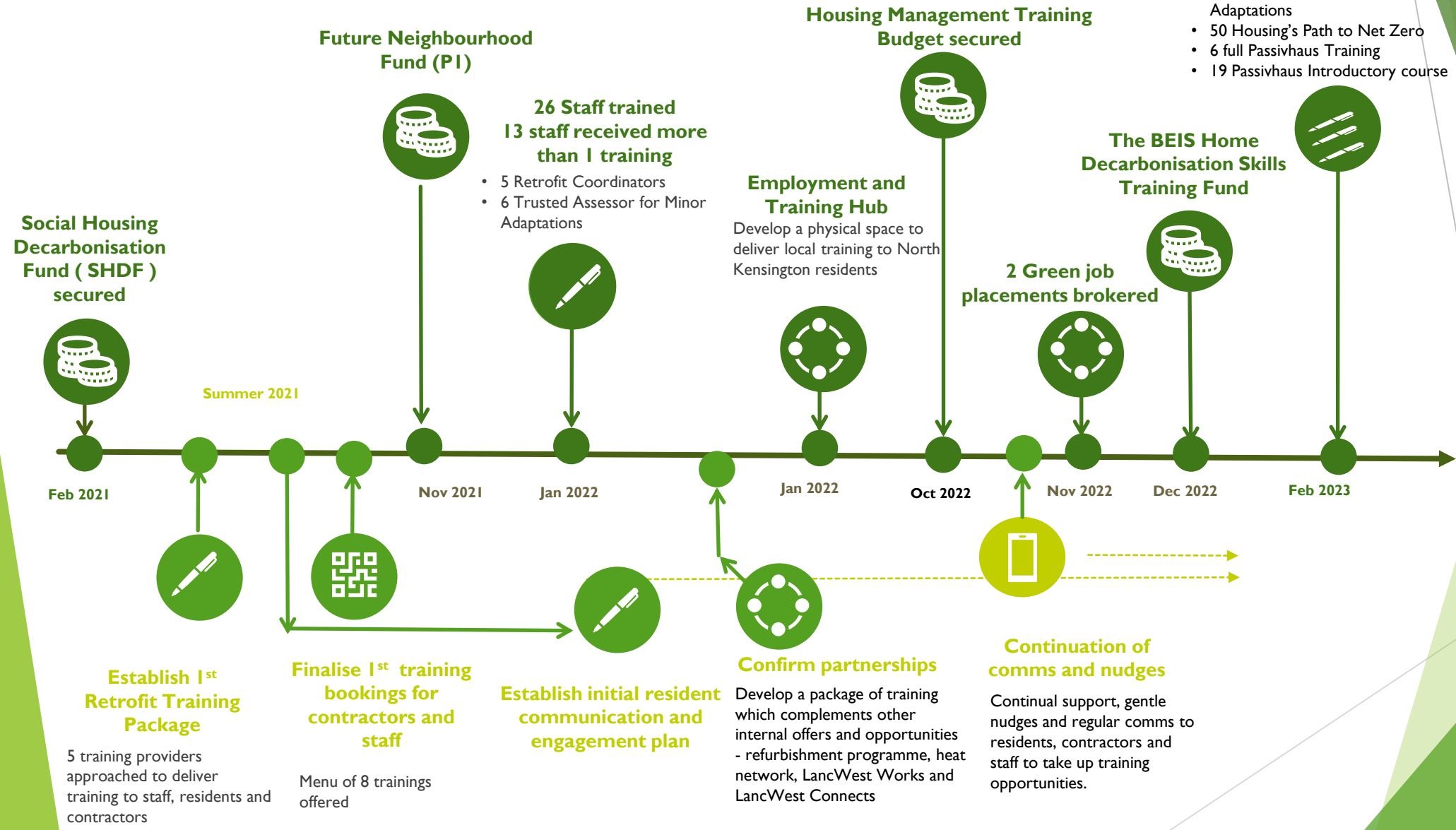
For more information about **GSA** and offers: yvette.freestone@rbkc.gov.uk

Evolution of GSA



75 Staff trained
26 staff received more than 1 training

- 7 Retrofit Coordinators
- 6 Trusted Assessors for Minor Adaptations
- 50 Housing's Path to Net Zero
- 6 full Passivhaus Training
- 19 Passivhaus Introductory course



Establish 1st Retrofit Training Package

5 training providers approached to deliver training to staff, residents and contractors

Finalise 1st training bookings for contractors and staff

Menu of 8 trainings offered

Establish initial resident communication and engagement plan

Develop a package of training which complements other internal offers and opportunities - refurbishment programme, heat network, LancWest Works and LancWest Connects

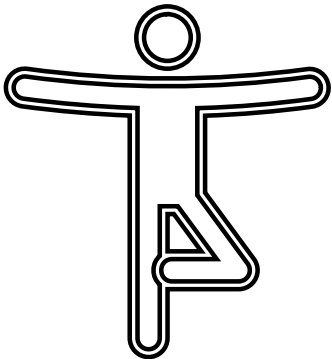
LANCASTER WEST NEIGHBOURHOOD TEAM
W11

Future Neighbourhood Partnership Board

Update on Community Projects



**Education and
Economic
Development**



**Health and
Wellbeing**
JSNA, Clare
Lyons-Baker



**Sustainability
and a Greener
Estate**



**Connected
Community**

Background

- We want to work with the bereaved and survivors and the local community to build a better understanding of the ongoing impact of the Grenfell tragedy, now and over the coming years.
- To help with this, the Public Health and Grenfell Partnerships team will be developing an updated needs assessment looking at the health and wellbeing needs of the community now and in the next phase.

What

We want to hear from bereaved, survivors and local people about how they continue to experience the impact of the tragedy. In particular, what people's concerns are for the future (especially around justice, the future of the Tower and the site) and what kinds of support works for them to help us answer the following questions:

1. What is the ongoing impact of the Grenfell tragedy on those most affected?
2. What are their main health and wellbeing needs?
3. What helps their health and wellbeing?
4. What more could we do to support recovery?

To ensure we capture the different needs of bereaved, survivors and the local community and we would welcome discussions about the needs of particular groups (e.g. children and young people)

How you can get involved

We want as many people as possible to inform this piece of work. To get involved, you can:

- Organise a 1:1/group discussion with you and the people you work with
- Share ideas with us via email or a phone call or feed back to us in a different way
- Point us to other material that might help with this piece of work.

To get involved, contact grenfellrecovery@rbkc.gov.uk.

Aims

- To develop a better understanding of what is most important to bereaved, survivors and local people and what kinds of support can most effectively promote recovery. The assessment will be mainly focused on **emotional health and wellbeing needs**, while recognising the many different ways that people experience the ongoing impact of the tragedy.
- To refresh and update the 2018 JSNA, [Journey of Recovery](#), using what we have learnt over the past five and a half years.
- To provide an initial evidence base to shape future services and support as well as helping to frame the wider conversations later this year about support beyond 2024.

Approach

- We will work with the community and key partners to gather and collate evidence from a range of sources, including the North Kensington Health and Wellbeing survey and other published sources.
- Recognising that local communities know their needs best, we will ensure a strong emphasis on local voices and perspectives by making the most of what people have already told us over the past five years and creating space for new conversations.
- We will identify best practice, strengths and gaps in local services and approaches. We can then develop recommendations and priority areas for action for the Council and its partners to take forward.

Understanding the ongoing impact of the Grenfell tragedy

Future Neighbourhood Partnership Board

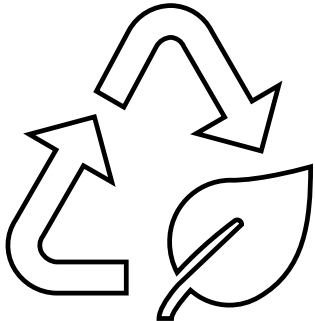
Update on Community Projects



**Education and
Economic
Development**



**Health and
Wellbeing**



**Sustainability
and a Greener
Estate**

**Landscaping
Strategy and
SuDS, Sarah Cross**



**Connected
Community**

Sustainability and a Garden Estate

Verity Close Garden of Life



Features include:

- Edible Green Perimeter
- Basket swing
- Green entry ring
- Swale with accessible bridge
- Shelter
- Picnic tables and seating
- Willow tunnel
- Tripod hammocks
- Electricity generated outdoor gym equipment

Completion Date: 20th March 2023

Sustainability and a Garden Estate

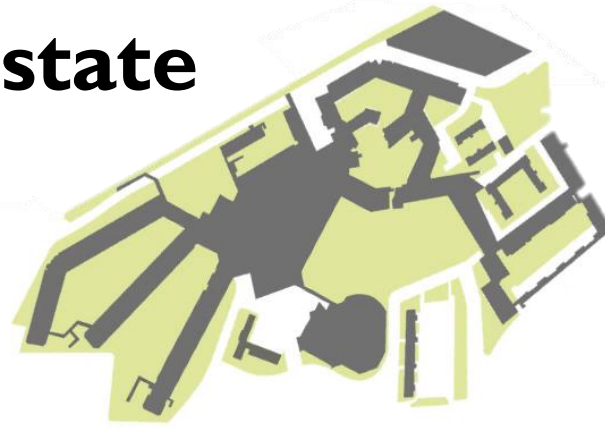
Landscape Strategy

Arup completed an initial sketchbook for the landscape across Lancaster West Estate including:

- Summary of previous resident engagement
- Topographic analysis
- **Flood and Drainage analysis**
- Historical/Urban Morphology analysis
- Transport analysis
- **Ecology and Biodiversity analysis**

Areas in bold will be key focus areas as the project expands.

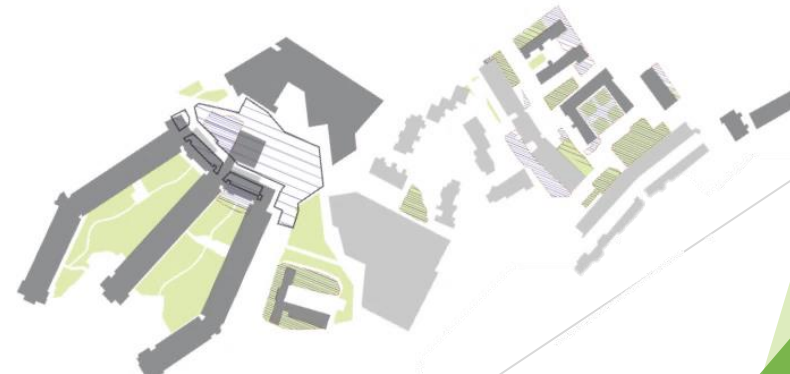
1967
The 'garden estate' vision



1967-2022
Vision partially realised, partially in-filled

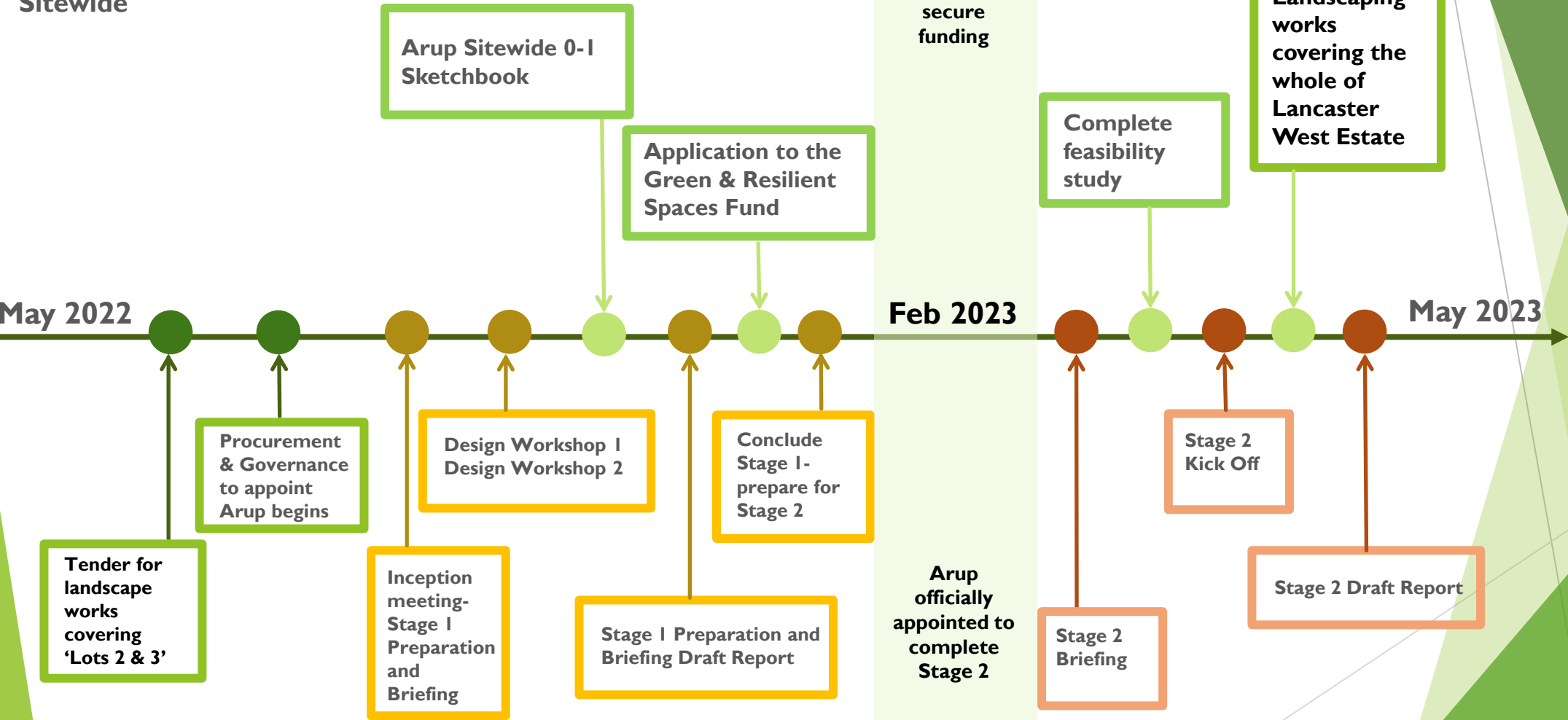


2022
Green spaces appropriated, largely privatised



Sustainability and a Garden Estate Landscape Timeline

Sitewide



Lots 2 & 3- Clarendon Walk, Camelford Walk, Talbot Walk, Morland House, Talbot Grove House

Future Neighbourhood Partnership Board

Update on Community Projects



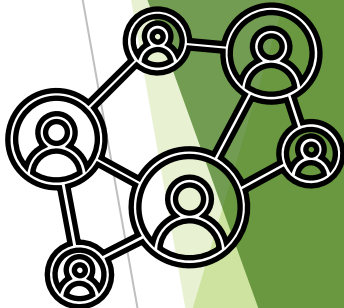
**Education and
Economic
Development**



**Health and
Wellbeing**



**Sustainability
and a Greener
Estate**



**Connected
Community**

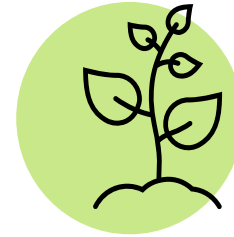
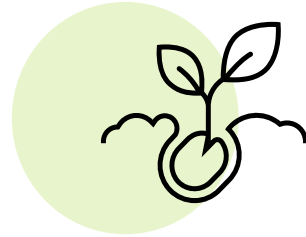
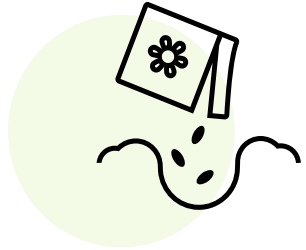
**LancWest
Connects, Phoebe
Cramer**

**LANCASTER WEST
NEIGHBOURHOOD TEAM**

W11

LancWest Connects

A connected community initiative



▶ Community vision

- ▶ **Community at the centre**
A neighbourhood designed for the community, by the community
- ▶ **Drivers of change**
Not only a place to live, but to build as a connected community
- ▶ **Health and wellbeing**
Cultivated by the environment and the community projects within it

▶ Ongoing projects

- ▶ **565.60 m² grey-to-green space.**
New garden areas to be planted and maintained
- ▶ **Balcony MOT Scheme**
Enabling those with reduced mobility to enjoy their space and community
- ▶ **Community Fridge**
Attended by over 80 people a session, with 14 tonnes of food waste diverted

▶ Our volunteers

- ▶ **4669 volunteering hours to date**
Equivalent to 648.5 working days
- ▶ 148 registered community volunteers
- ▶ Volunteering groups:
Grenfell Health and Wellbeing
- ▶ Community partnerships:
Referrals and signposting

LancWest Connects

A connected community initiative



▶ LancWest Connects

- ▶ **Process**
Streamlined registration and referrals;
A whole journey perspective
- ▶ **Package**
Volunteer sessions and rewards;
Wide variety of projects and skills;
Training and Development opportunities
- ▶ **Publicity**
New branding Lancaster West is open to all;
Promoting group cohesion and volunteer identity

Do you have community members to refer?

Projects that would benefit from community support?

Get involved with LancWest Connects:

phoebe.cramer@RBKC.gov.uk

LancWest
Connects

LancWest
CONNECTS

LancWest
CONNECTS

LancWest
CONNECTS

LancWest
Connects

LancWest
CONNECTS

You are invited!

Future Neighbourhood Partnership Workshop

May 2023 **Eventbrite**

- **Present** on projects/programmes (all members invited to present).
- **Problem solving activity:** opportunity for members to bring their current projects/work streams to the 'table.'
- **Discuss** future opportunities/ideas under the four thematic areas.
- **Panel, Q&A:** How do we ensure meaningful engagement/co-design.

If you wish to present or be a part of the panel please do contact Aisha: aisha.butera@rbkc.gov.uk

LANCASTER WEST
NEIGHBOURHOOD TEAM

W11

Any questions?



LANCASTER WEST
NEIGHBOURHOOD TEAM

W11