

The background features abstract, overlapping geometric shapes in various shades of green, ranging from light lime to dark forest green. The shapes are primarily triangles and polygons, creating a dynamic, layered effect. The overall composition is clean and modern, with the text centered in the white space.

Lancaster West Future Neighbourhood Partnership Board

15:00-16:00, Thursday, 19 September 2024

Welcome to September's Lancaster West Future Neighbourhood Partnership Board

An opportunity to update on locally delivered projects under the four themes from the Future Neighbourhood Vision:



Sustainability and a greener estate



Education and economic development



Health and wellbeing



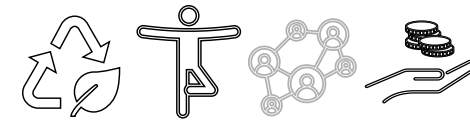
Connected communities

15:00-15:05

Welcome
James Caspell

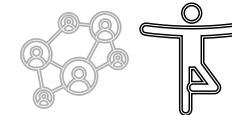
15:05-15:15

Lancaster West Future Neighbourhood Vision and Project Updates
Harry Hewitt, Felicity Maries, Khadra Ibrahim and Ruby Harvey



15:15-15:20

Partner Spotlight: Met. Police (Community Wellbeing)
Carlos Husbands



15:20-15:30

Partner Spotlight: Westway Trust
Venu Dhupa



15:30-15:35

Partner Spotlight: Fit for Life Youth
Chris Herbert



15:35-15:45

Money Café's and MOTs
Hibo Yussuf



15:45-15:55

An update from Grenfell Partnerships
Nick Orgovanyi



15:55-16:00

Any other business and close
James Caspell

The Lancaster West Future Neighbourhood Vision

- The Lancaster West Future Neighbourhood Vision is a vision for community services and assets on and around Lancaster West Estate.
- Through the Future Neighbourhood Vision, **23 priority projects** were identified to be delivered on and around Lancaster West Estate



FNV Exemplar Projects

Education and Economic Development

Employment and Training Hub

Community Market

Library of Resources

Community Pavilion

Health and Wellbeing

Sensory Garden

Sports Areas

Wellbeing Centre

Timber Outdoor Gym

Activity Trail

Adventure Playground

Sustainability and a Greener Estate

Community Gardens

Food Growing Spaces

Greening of community spaces

Library of Things

Repair Shop

Fuel Support Hub

Connected Communities

Cycle/Scooter Parking 

Services Hub

Lighting Improvements

Play Streets

Community Centre

Neighbourhood Totems

Art Crossings

10 projects delivered so far!

(+1 since the previous meeting)

Status

Delivered/In delivery

Project planning phase

Not yet started

An update on the Employment and Training Hub

LancWest
Works



Since opening in May 2023...

- **19** partners have delivered a course through the Hub
- Over **200 RBKC residents** have engaged
- Over **200 residents** attended an Employment and Training Fair earlier this year, attended by over **30** partners

Collaborate with us!

LancWest
Works

Have a course,
programme or even an
idea and looking for a
suitable venue?

Know of any opportunities
through networks to
connect with us?

Learn how to set up a community enterprise!

Friday 9 August 11am - 12:30pm
Unit 38 Baseline Studios W11 4AT

Do you have a community idea?
It could be a drama club, DJ lessons, exercise classes, or something else!

Community Catalysts invites anyone with a business idea or interest in starting a community micro-enterprise to drop in and learn more. We provide support and guidance for those looking to serve their community through innovative ventures.

If you'd like anymore information, or to book your space, please scan the QR code or contact khadra.ibrahim@rbkc.gov.uk

The ClementJames Centre's PATHWAYS TO EMPLOYMENT PROGRAMME
Monday 12th August - Thursday 15th August 2024 1pm - 4pm
A FREE four-day careers and upskilling programme for 16-24 year olds

Meet new people and develop your employability skills in a comprehensive programme focussed on career options and pathways.

- Job application tips from professional recruiters with SUEZ.
- CV and interview skills workshop.
- Advice on courses and training pathways.
- Option for 1:1 follow-up sessions.

For more information or to sign up, please contact earlyintervention@clementjames.org or call 020 7221 8810. All trips will depart from The ClementJames Centre, 95 Sirdar Road, W11 4EQ to Unit 30, Baseline Studios, Whitchurch Road, London W11 4AT

Logos: @lancasterwestneighbourhoodteam, www.W11.org, LWRA, LANCASTER WEST NEIGHBOURHOOD TEAM, W11, CLAJAMES CENTRE, RBKC

QR codes for contact and program details.

Training delivered by partners in August

Get in touch!



Khadra.Ibrahim@rbkc.gov.uk



5 new cycle hangars on Lancaster West Estate!

Benefits:

- Making travel by bicycle easier through safer storage
- Reducing traffic congestion
- Improving local air quality
- Working towards the goal for the borough to be carbon neutral by 2040

- A - Hurstway Walk
- B - Testerton Walk
- C - Barandon Walk
- D - Verity Close
- E - Talbot Walk



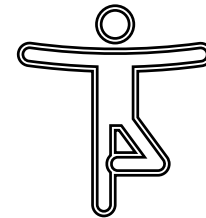
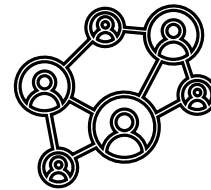


**METROPOLITAN
POLICE**

Future Neighbourhood Partner Spotlight:

**Carlos Husbands, Youth
Engagement Team**

Metropolitan Police

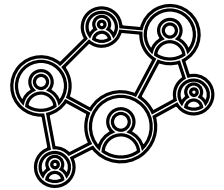
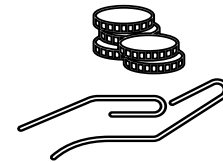
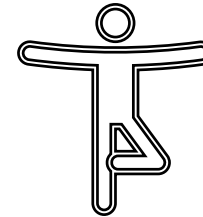
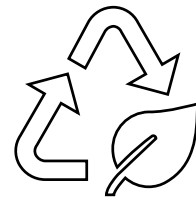


**WEST
WAY
TRUST**

**Future Neighbourhood
Partner Spotlight:**

Venu Dhupa, CEO

Westway Trust

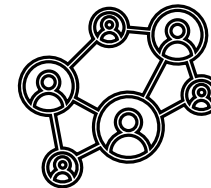
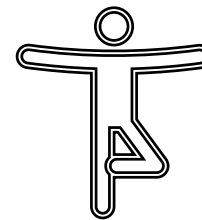




Future Neighbourhood Partner Spotlight:

**Christopher Herbert, CEO
and Founder**

Fit For Life Youth



Money MOT: Background

The Money MOT project creates pathways for residents to enhance financial resilience by:

- ✓ reducing debt and rent arrears.
- ✓ alleviating additional financial pressure.
- ✓ increasing access to education and promoting independence.
- ✓ preventing the risk of homelessness

July – December 2023: Secured £20,000 from the **Housing Advisers Programme** (LGA) to launch and pilot the project.

January – April 2025: Secured an additional £53,000 from **the Fusion 21 Foundation** to expand and extend the project's delivery.

Delivery Partner: Nova New Opportunities

They provide on-the-ground I-to-I support through walk-ins, telephone, and video call appointments.○

Outcome:

Since July 2023, we have successfully supported **69** residents and put **£29,052**, back in residents' pockets (Avg. savings of **£421** per resident)

Hibo Yussuf

Cost of
Living
Support



Money MOT



Scheme



Feeling stressed or worried about money?

Do you need support with paying rent, debts, applying for benefits or any other financial support?



Nova are working with Lancaster West Neighbourhood Team to provide financial advice and support for all residents, including:

- Budgeting support
- Debt relief and payment plans for rent and utility arrears
- Benefits calculations and assessment preparation
- Advocacy for residents
- Support into employment, IT skills and wellbeing activities
- Application support and access to small grants for households



If you would like help and support, please contact Alex from Nova at **Alexander.Coackley@novanew.org.uk** or call **020 8960 2488**.

nova
welcome to a better world

@lancasterwestneighbourhoodteam www.WeAreW11.org

lancasterwestoffice@rbkc.gov.uk 0800 389 2005

LANCASTER WEST
NEIGHBOURHOOD TEAM
W11

Money MOT: Background

The Money MOT project creates pathways for residents to enhance financial resilience by:

- ✓ reducing debt and rent arrears.
- ✓ alleviating additional financial pressure.
- ✓ increasing access to education and promoting independence.
- ✓ preventing the risk of homelessness

July – Dec 2023: Pilot project

January- April 2025: Project launch and extension

Delivery Partner: Nova

They provide on-the-ground I-to-I support through walk-ins, telephone, and video call appointments.

Cost of Living Support



Money MOT



Scheme



Feeling stressed or worried about money?

Do you need support with paying rent, debts, applying for benefits or any other financial support?

Nova are working with Lancaster West Neighbourhood Team to provide financial advice and support for all residents, including:

- Budgeting support
- Debt relief and payment plans for rent and utility arrears
- Benefits calculations and assessment preparation
- Advocacy for residents
- Support into employment, IT skills and wellbeing activities
- Application support and access to small grants for households



If you would like help and support, please contact Alex from Nova at Alexander.Coackley@novanew.org.uk or call **020 8960 2488**.



@lancasterwestneighbourhoodteam

www.WeAreW11.org

lancasterwestoffice@rbkc.gov.uk

0800 389 2005



Money MOT: Housing & Money Café

Hibo

Cost of Living Support



We successfully hosted two **Housing & Money Café** drop-in sessions in July and August. The drop-in is designed to offer a convenient one-stop-shop for residents, providing comprehensive support for;

- **Housing, Repairs, and Estate Support**
- **Money Management and Advice**
- **Energy Advice Service**

Beyond this, it is a key opportunity to build relationships with residents and make our teams more accessible and building positive presence locally.

Feedback form results

Number of attendees	25
Number of resident who provided feedback	16
Overall experience	Majority rated as Excellent: 82%
Housing Support	Very Satisfied: 55% Satisfied: 45%
Money Management	Very Satisfied: 64% Satisfied: 36%
Energy- Saving Support	Very Satisfied: 45% Satisfied: 31% Good: 13%

Resident A:
“I would like more support like this. I found all the staff helpful and having everyone in one place is great.”

Resident B:
“This is certainly a good initiative. There should be more initiatives and follow-up including the housing management team.”



...maximising financial and career opportunities

Money MOT: What's next

Cost of
Living
Support



With the additional funding secured, we will continue to deliver this project until April 2025. We aim to grow the Money MOT project beyond its pilot phase and integrate the insights gained.

We will....

- ✓ develop a framework
- ✓ continue to collaborate with stakeholders
- ✓ collaborate with external partners
- ✓ procure and work with a research partner

Need to refer a resident?

1. Gain resident permission to refer into the project and share basic contact info – or they can self-refer
2. Simply email hibo.yussuf@rbkc.gov.uk or alexander.coackley@novanew.org.uk

For more information about this project and how you can get involved, please contact **Hibo Yussuf**.

Future Grenfell Support

Update for the LW Future Neighbourhood
Partnership Board – 19 September 2024

Nick Orgovanyi

Background and Context

- Restorative Justice Programme, rebranded as Future Grenfell Support
- Joint funding from the council, government, LFB and corporate organisations
- The council was asked to lead the consultation under the scrutiny of the [External Scrutiny Team](#)
- £42m is available to fund the Future Grenfell Support programme, from 2024 to 2028
- Three separate consultation exercises took place between October 2023 and June 2024 across multiple phases

£18m



For personal support to bereaved and survivors

£10m



For the immediate community (people who live within 500m of the tower and those who've moved out since)

£14m



For education and training support for bereaved, survivors and the immediate community

Consultation with the immediate community

- The consultation on the **immediate community support** took place between October 2023 and May 2024 across four phases.
- Residents participated in a number of different ways, including through workshops, surveys and door knocking.

FEEDBACK HERE

Phase 1

From October to December, we heard from over 300 people about what the ongoing impact of Grenfell is for them and their family, and what type of support they wanted to see in the future.

Phase 2

In February, we shared the feedback with residents and reflected on what this means going forward. 19 people attended workshops in this phase.

Phase 3

In March, we discussed how the future support could work, looking at key choices and decisions that will need to be made. We heard from over 50 people.

Phase 4

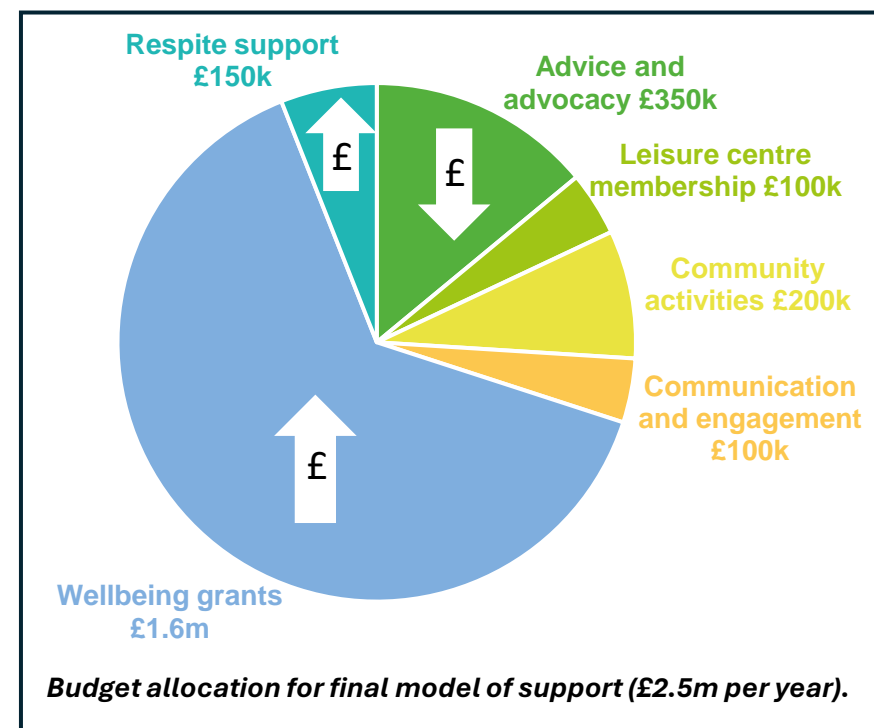
Between April and May, over 250 people shared their views on the draft final model.

FEEDBACK HERE

- Following Phase 4, a final model was presented back to residents and agreed by the Council's Leadership Team in June 2024.

Final model of support for the immediate community

- The final model of support contains six elements, reflecting the feedback gathered throughout each phase of the consultation. It includes:
 - An additional **Advocacy Team** to help people with housing and health issues
 - **Annual wellbeing grants for households** to use for anything related to their wellbeing
 - **Respite** support
 - Free **leisure centre memberships**
 - Commissioning new **community activities**
 - A dedicated programme **communication and engagement**
- We made some amendments to the final model to reflect feedback we heard in Phase 4. These were 1) increasing the budget for the household wellbeing grants, 2) increasing the budget for respite support and 3) reducing the budget for the Advocacy Team.
- Since June, we have been working with a resident Implementation Steering Group* on the implementation of the support, to ensure residents' voices continue to be at the heart of how the support is put in place.
- We are planning for the first elements of the support to be launched later this year, with the Advocacy Team in place and leisure centre memberships in place by the end of December.



*Notes of the meetings are publicly available [here](#). The next meetings will take place on 24th September, 8th, 15th and 29th October, at KLC from 6.15 to 8pm.

Education and training support for the immediate community

- Alongside the £10m budget for community support, there will be a £14m budget for Education and training support for bereaved and survivors, and the immediate local community.
- The final model for the Education and Training support was agreed by the Leadership Team in July following a consultation that ran from October to June.
- For the immediate community, the support includes:

Support for children and young people

- Education hub for children and young people in full time education and under the age of 25
- Wellbeing support in schools
- Peer mentoring programme
- Bursary funding up to £1500

Support for adults

- Dedicated employment advisor to support people with their career
- A Bursary Programme offering pots of funding up to £1500 to support with education and training.

- The implementation of this support will be led by a number of groups involving residents over the next three months.

Any other business?

Thank you!

Next meeting January 2025

For more information about the Future Neighbourhood Vision



<https://www.wearewll.org/en/lancaster-west-neighbourhood-vision>

Follow us!



@lancasterwestneighbourhoodteam