

Net-Zero Update

Sarah Cross

Sustainability Programme Manager

Net Zero Programme on Page

Executive Summary

Progress towards net-zero continues through delivery of the refurbishment, the Notting Dale Heat and landscaping programmes evidenced by on site project delivery, live tenders and ongoing carbon reductions
Alongside this the climate adaptation and net-zero strategies continue to help us understand and meet our targets, and share this model with wider housing management, supporting the council's overall net-zero goals.

Workstream Summary

Carbon Emissions & Goodbye Gas

65 sign ups to the goodbye gas campaign. 90% of residents satisfied with new installations. Overall, 265 induction hobs have been installed, and 103 gas meters have been removed. Focus over the next few months will be on Walkways to improve take-up in this block.

Resident Transition and Energy Advice

Energy advice and support provided to residents as we progress through cost-of-living crisis with positive resident feedback. 312 smart thermostats installed, 55 1-2-1 advice sessions, multiple energy efficient measures provided.

Landscape & Garden Estate

Turkington & Martin onsite to develop sitewide plans. Landscape engagement planning ongoing, focus on recruiting ambassadors and landscape champions from underrepresented groups. Lot 2/3 flood mitigation projects out to tender. Actively seeking funding sources.

Climate Adaptation & Resilience

Ongoing research into climate adaptation and resilience measures. Action plan in the internal review process, working towards resident consultation.

Fundraising & SHDF Grant

Loans secured on Notting Dale Heat Network, Application in progress on Green Finance Fund, SHDF grant looking to be consolidated. LWE incorporated into HRA business planning.

Key Statistics

1,177
KG Co2
Carbon
Reduction

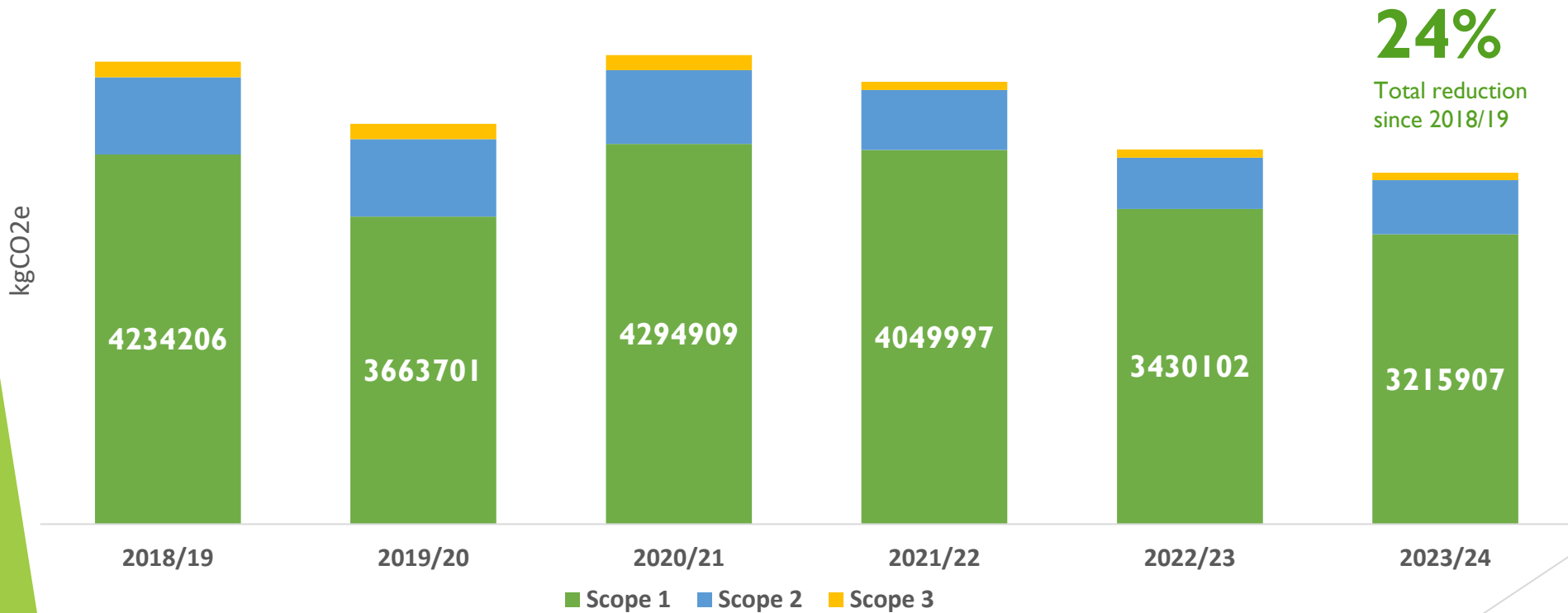


65
energy
efficient
measures
provided to
residents



24% reduction in Carbon Emissions since 2018/19

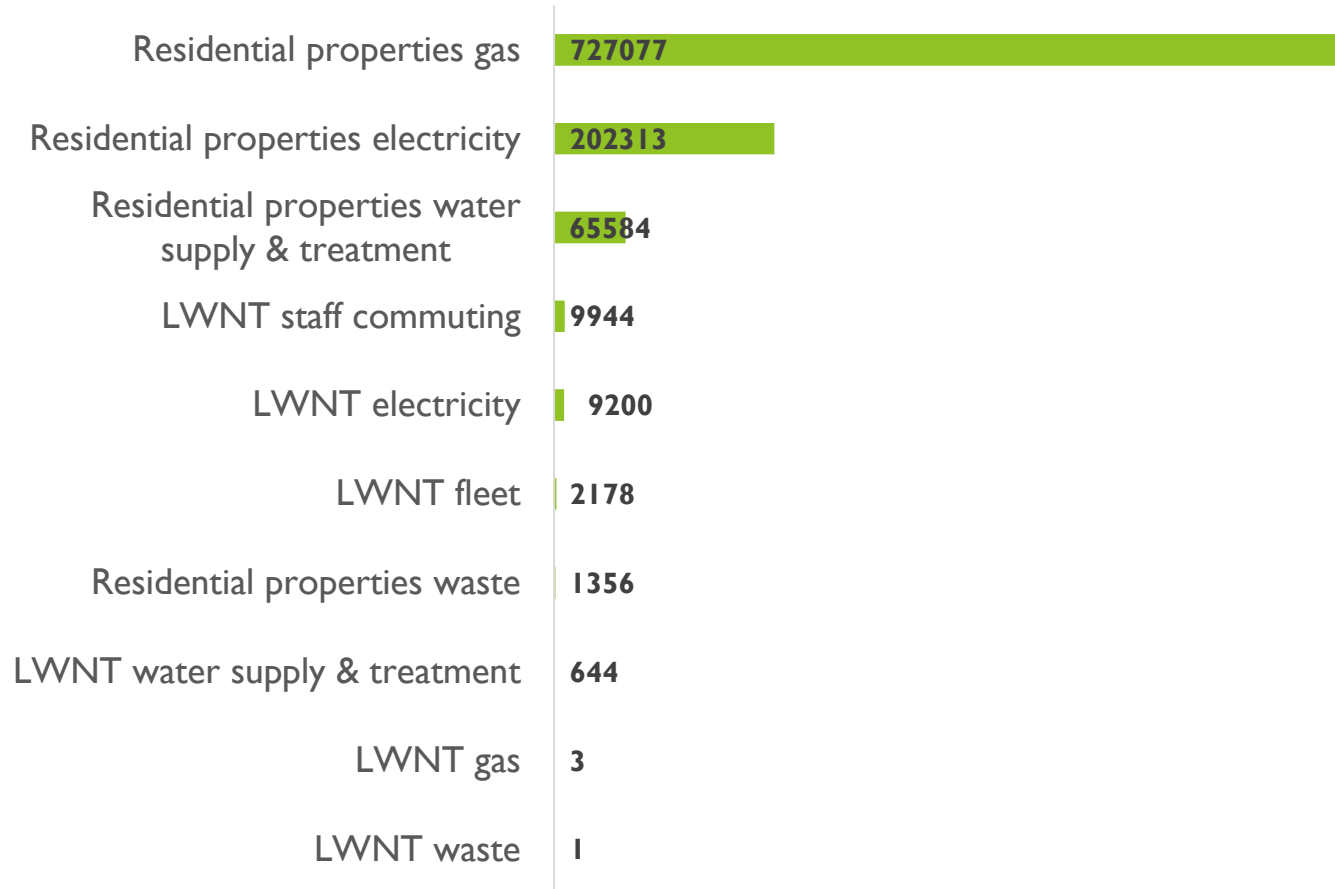
Gas removal, solar PV, and the transition to electrical vehicles contribute most to emissions reductions. 3216tCO₂e total emissions in FY 2023/4, a reduction of 213tCO₂e since 2022/3.



Scope 1 emissions are direct emissions produced by an organisation's business activities.
Scope 2 emissions are emissions from the production of energy that an organisation purchases.
Scope 3 emissions refer to all other indirect emissions that occur in an organisation's value chain.

How are we reducing emissions?

Reduction in emissions (KgCO₂e) since 2018/9



Goodbye Gas progress

11,125kgCO₂e saved per year
+244kgCO₂ since last Programme Board (Jul 2024)

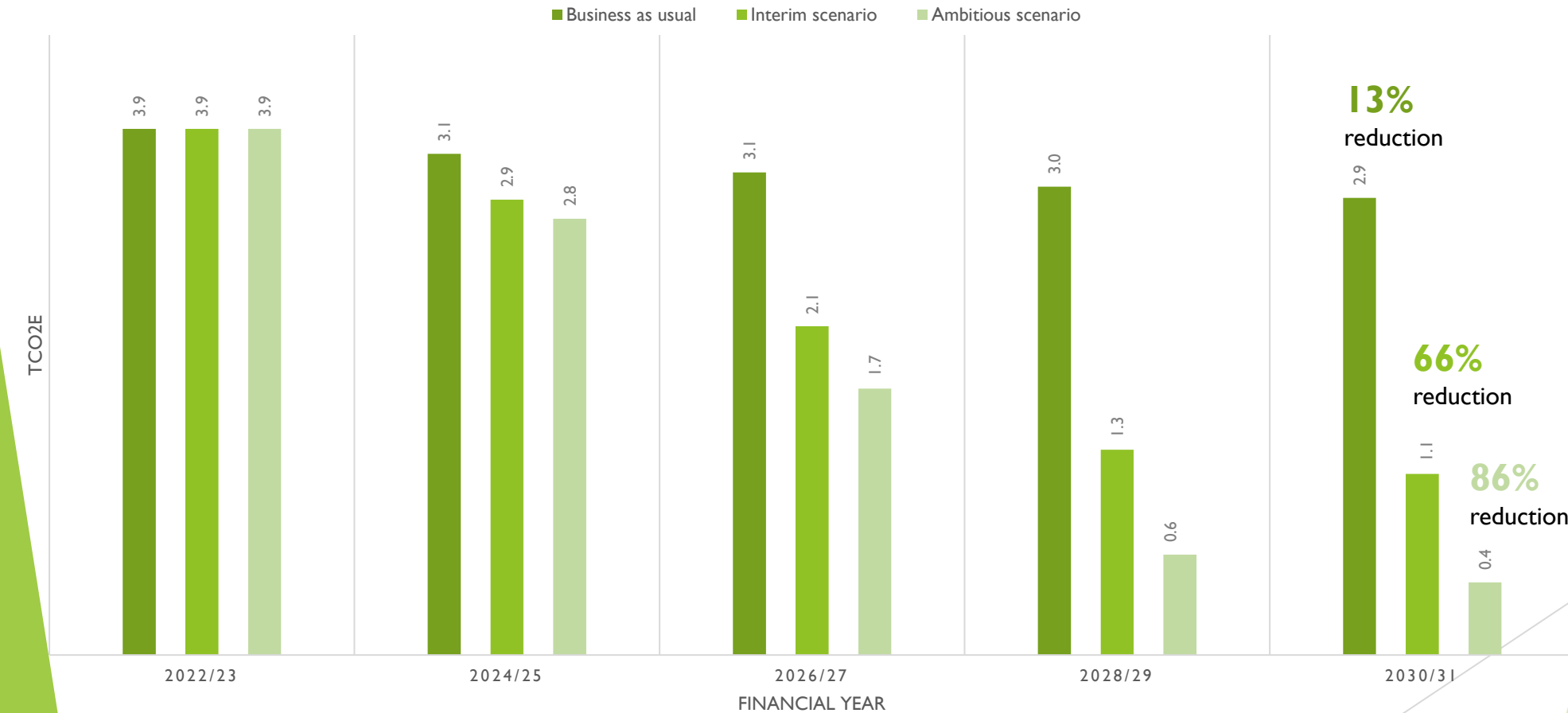
Lot 2 projected savings

936tCO₂e reduced per annum

Last Updated: 28 November 2024

86% Reduction in Carbon Emissions from Estate-Wide Refurbishment

If a partial refurbishment was completed emissions would be reduced by 66% and a 13% reduction would result from BAU due to decarbonisation of the grid.



The **interim scenario** or '**partial refurbishment**' option includes a 20% reduction in operational waste, estate-wide food collection and full refurbishment of all homes on within Lots 1, 2 & 3, 574 in total.

Continuing to maximise income

Fundraising

MEEF

£10.5m loan secured via MEEF at 3.5% for Notting Dale Heat Network.

A saving of £2.4m as opposed to borrowing via PWLB which was assumed at Final Investment Decision

Green Finance Fund

Preferential interest rate of 3.6% secured if loan application submitted by 10/02/25.

Loan application for Lot 2 works in progress, working closely with finance colleagues and GFF treasury colleagues.

MHCLG

Conversations remain ongoing between RBKC and the ministry

SHDF

Demo

Change requests being drafted for extension of time and request to purchase materials.

Wave 1

Change requests for consolidation of grant into Demo wave.

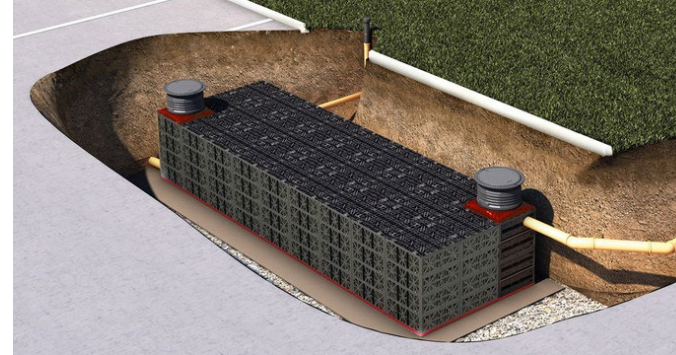
Wave 2

Change requests consolidation of grant into demo wave.

Progress on flood alleviation at St Mark's Close

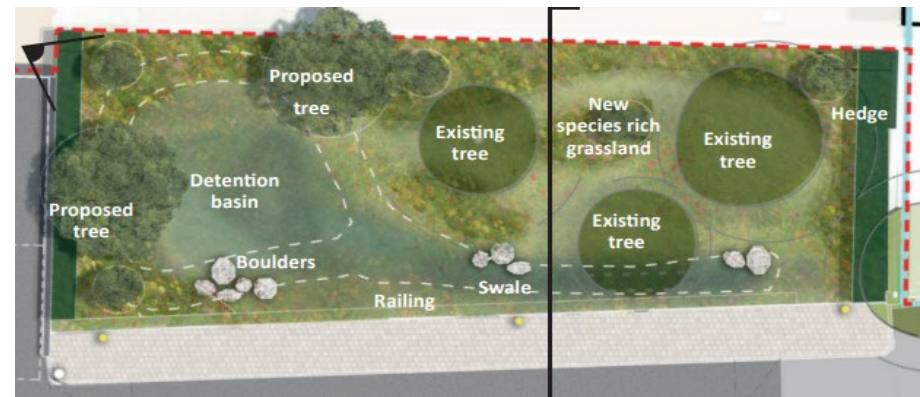
Install Attenuation Tank & Drainage Channels planned for Spring 2025

- ▶ £75,000 additional funding secured for the installation of attenuation tanks between Morland House, Talbot Grove House and Clarendon Walk.
- ▶ Long-term storm water storage will increase our flood resilience and improve the capacity of the local sewer system protecting our residents from flooding.



Detention Basin & Conveyance Swale out to tender!

- ▶ £165,000 total funding secured for delivery of the Morland House detention basin, swale and rain garden.
- ▶ Short term redirection of storm water into green and blue infrastructure, improving biodiversity and reducing flood risk.



Landscape Ambassadors design safer spaces for Women and Girls



Blank walls - Combination of climbing plants & artwork, colour by numbers



Seating pockets, family picnic tables & seating amongst trees

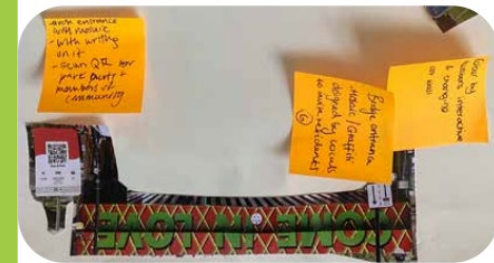


Use topography for sliding, play into sliding

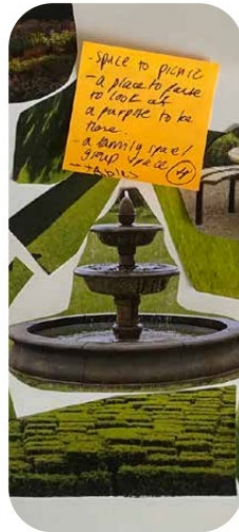


- ▶ 3 female residents aged 18-24 were offered a paid placement with Turkington Martin and Make Space for girls

- ▶ Their work has directly influenced landscape designs.



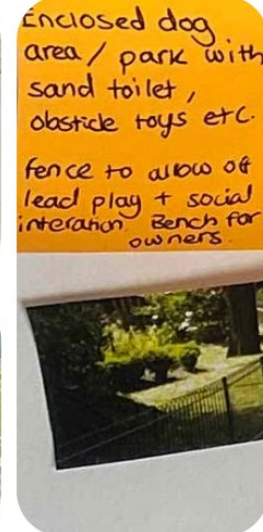
Welcoming entrance signage, QR code on signage for more information, future proofing for next generation use



Family Social Zone & Focus area, open picnic spots and outdoor library - shift playground



Seating steps at entrance & event to draw you into the space



Dog zone



Outdoor gym - not coded male, walking loop, hop scotch