



Notting Dale Heat Network Lancaster Green Briefing Pack

August 2025

Summary

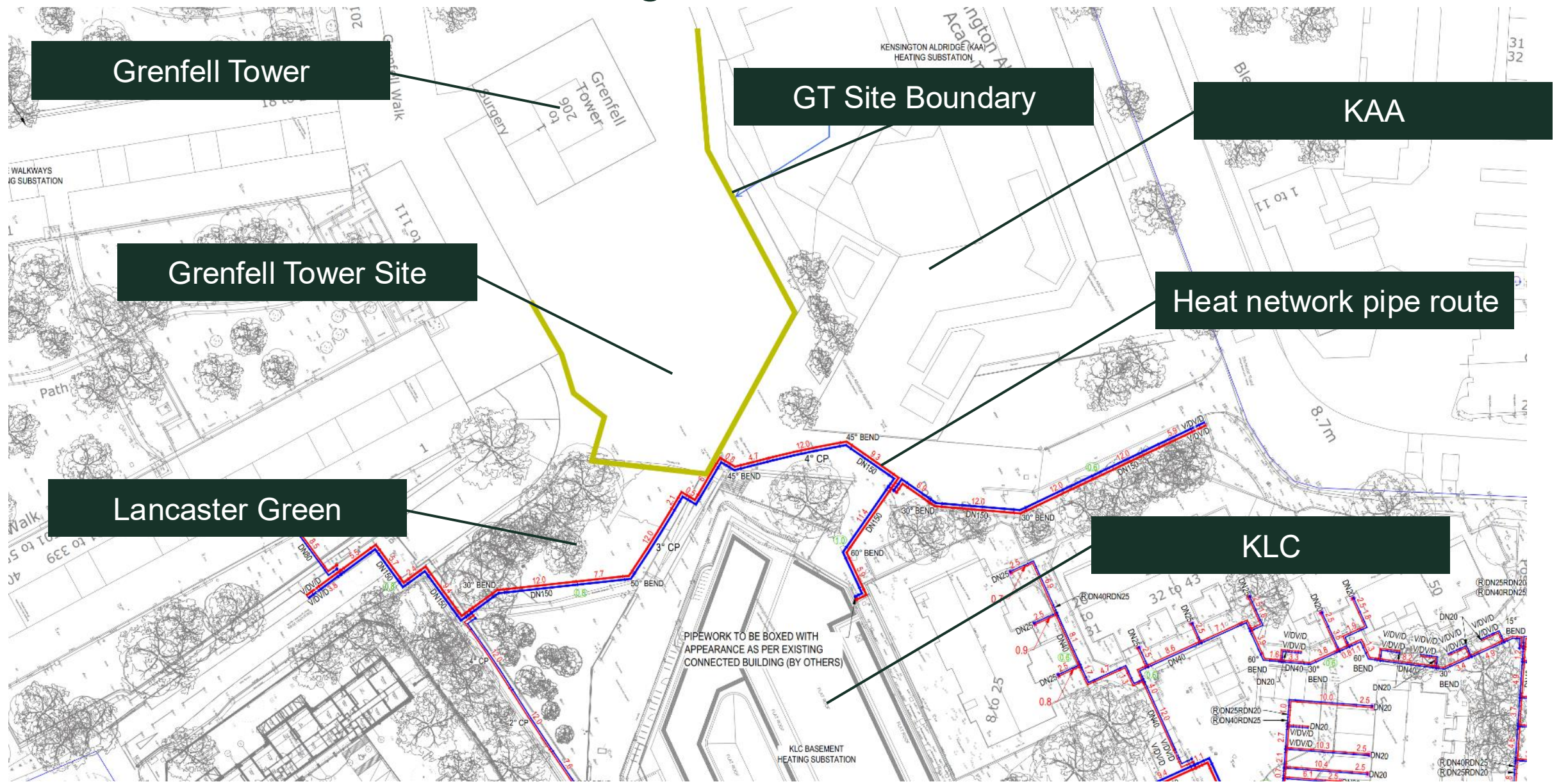
Notting Dale Heat Network will supply heating and hot water to 826 homes on the Lancaster West Estate, Baseline Studios, and Kensington Leisure Centre.

The network is made up of Air and Water Source Heat Pumps, energy centres and a thermal store, and a network of pipes carrying water to homes, business units, and the leisure centre.

Key Benefits:

1. The new heat network will **provide residents reliable heating and hot water from renewable sources** for decades to come.
2. **The removal of gas will improve safety and air quality** for residents and **reduce carbon emissions**.
3. The installation of individual heat meters, combined with energy efficiency improvements through property refurbishment will help to **reduce energy consumption and the costs for residents**.

A section of pipework needs to run through Lancaster Green, between KLC and KAA, adjacent to the Grenfell Tower site.



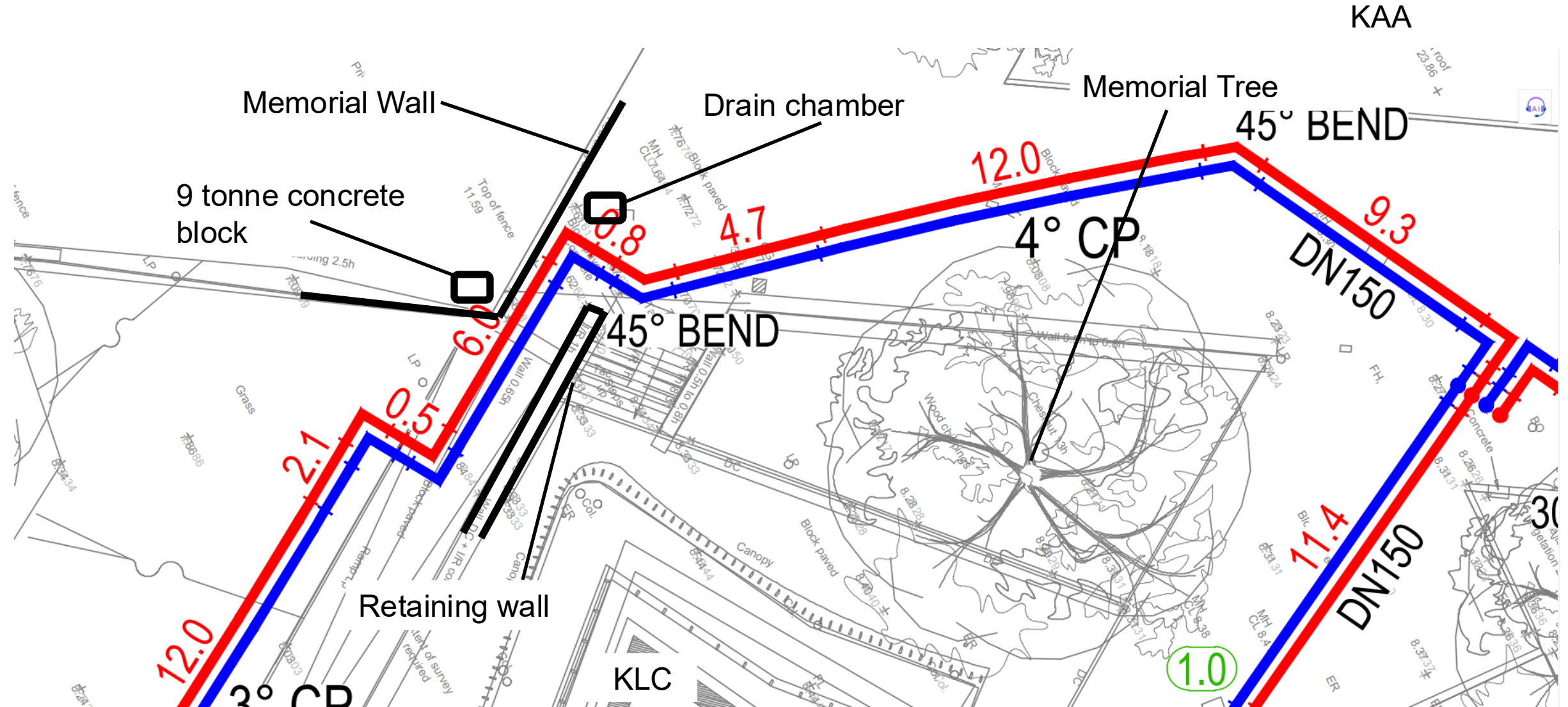
Why does the heat network need to run through Lancaster Green?

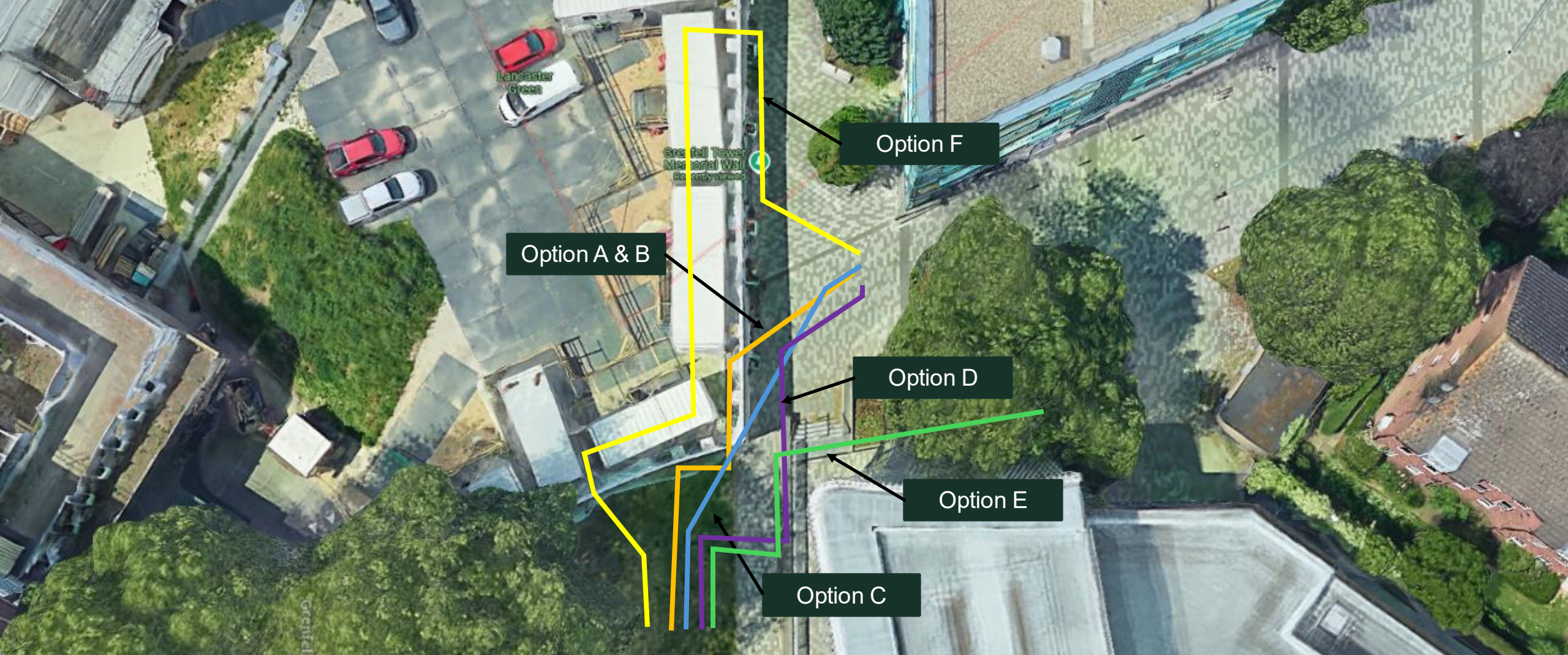
- The new heat network will join three existing heat networks into one, plus provide heating and hot water to the leisure centre.
- Hot water will be generated by heat pumps on Kensington Leisure Centre roof. Pipes will be installed on the north face of KLC to carry water from the leisure centre roof to underground pipes.
- The pipework route has been developed based on feedback from residents,, planners, civil engineers, the Grenfell Tower Site Team, Grenfell Tower Memorial Commission, KAA, and KLC.

Why does this work need to happen in August 2025?

- Vital Energi are in contract with the council to build the heat network in the coming months.
- Undertaking this section of work in August aligns with Kensington Aldridge Academy's school holidays, when disruption for school traffic is limited. The Academy's Muster Point (in case of emergency) is also on Lancaster Green which again means that commencing most of the work off-term work in this area is preferable.

There are a number of constraints to the pipework route which mean the route is close to the Memorial Wall

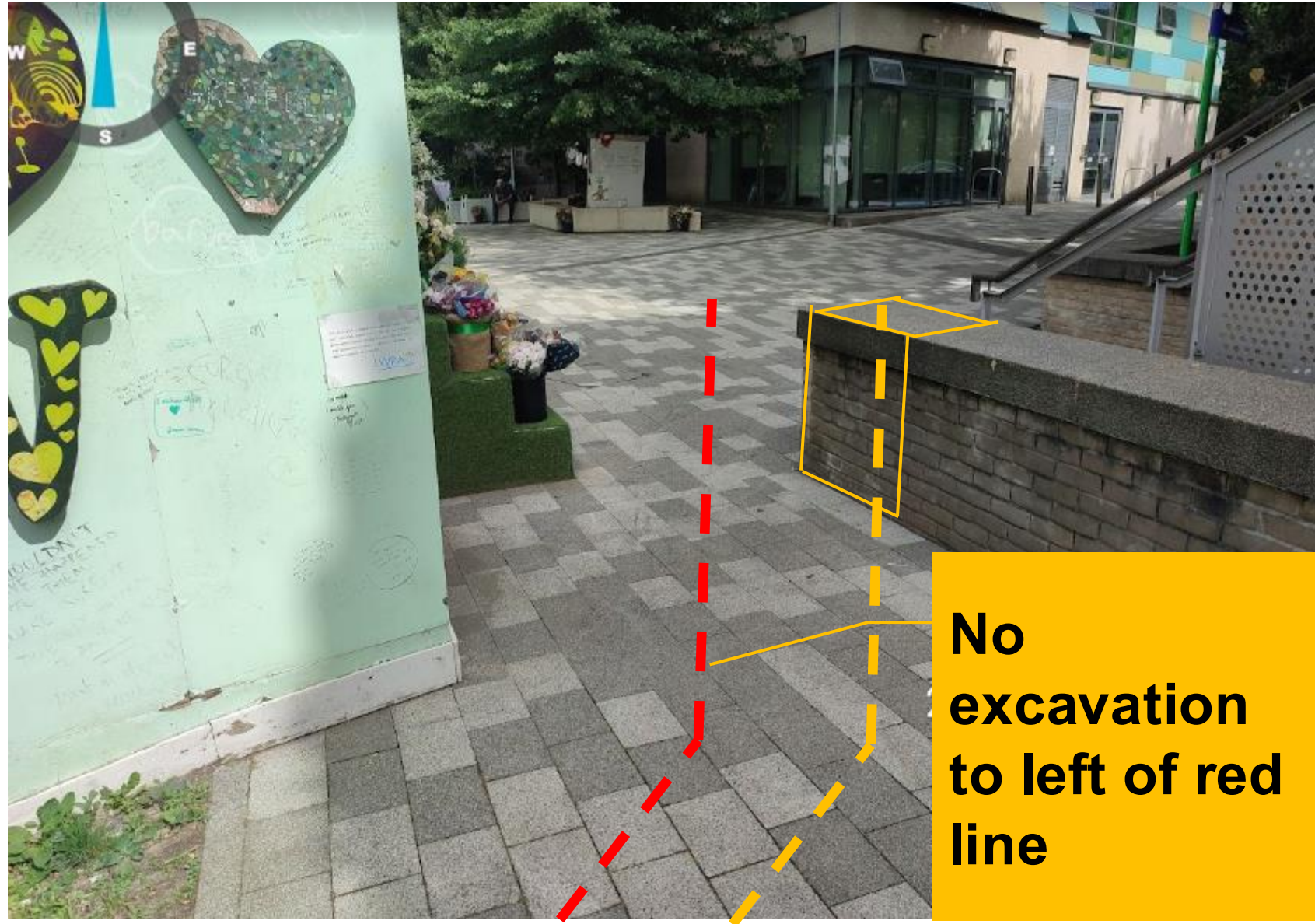




A number of pipe routes have been assessed



Remove and rebuild the retaining wall has been assessed as the best all-round option (C)



What does it involve?

Remove approximately 1 metre of retaining wall to allow an increased working distance from the Memorial Wall of 1 meter. Pipe will not run parallel with retaining wall to further protect the Memorial Wall.

After completion of the works the retaining wall will be rebuilt.



How will the works be undertaken sensitively?

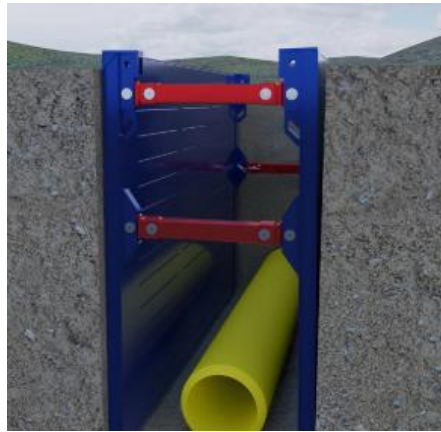
- **Hours of working** will be 8am - 5pm with no high-impact works before 9am, between 12pm - 2pm and after 4pm.
- **Noise will be mitigated** using acoustic blankets installed on barrier fencing. Some sections of pipe will be prefabricated off-site to reduce noise further.
- **Water suppression will be used locally** for activities which create dust, such as cutting masonry.
- **There will be multiple visits through the working day** by RBKC's Clerk of Works and project managers.
- **We are using a combination of technology and bespoke protection** to limit risks of damage to the Memorial Wall itself (as outlined in next slides).
- **The wall will be protected over the carnival period**, 27-28 August, with a steward on site from 10 am to 10pm on both days and motion-detector CCTV camera also.

How will the Memorial Wall be protected?

We have redesigned the pipeline route in this area to reduce as far as practically possible the risk of any damage to the Memorial Wall.

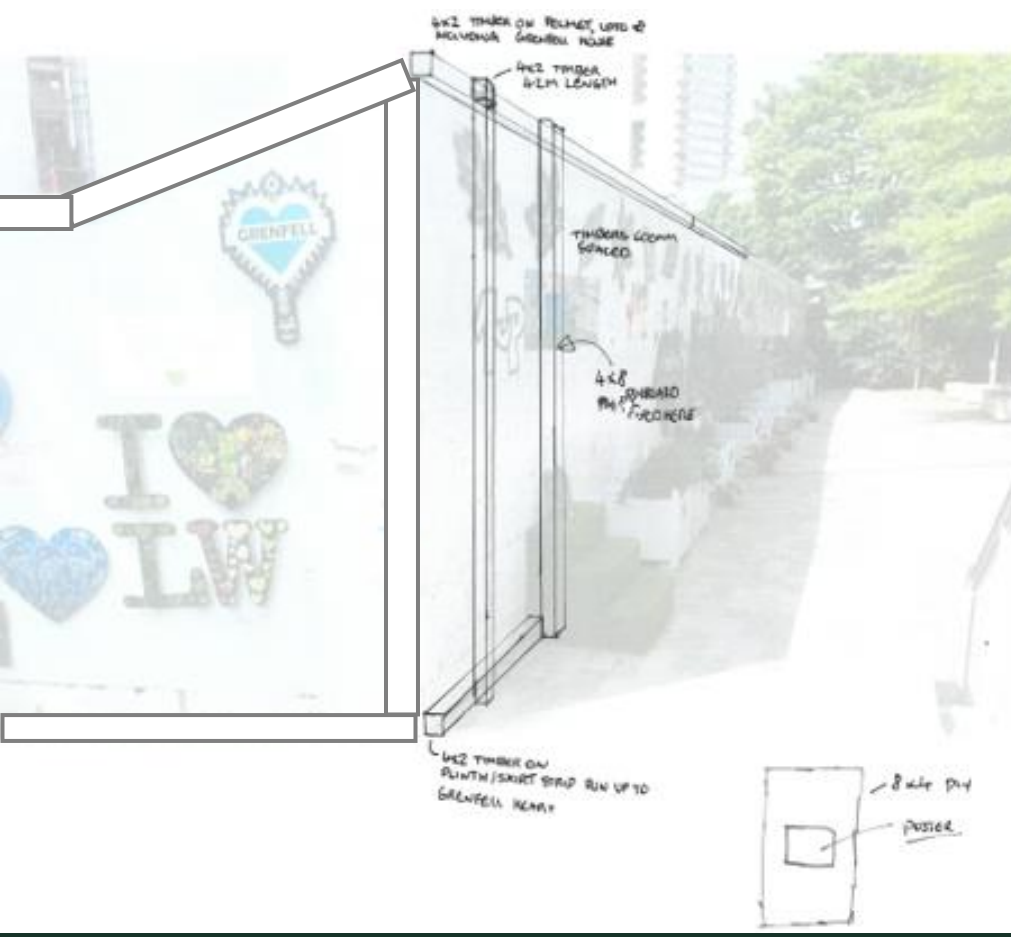
Trenches boxes (photo, bottom left) will be used to reduce the overall width of the trench itself compared to conventional methods. Earth will be removed using **vacuum** excavators (photo, bottom centre) to reduce risks of mud and debris damage.

An impact resistant non-combustible frame will be installed directly in front of the Memorial Wall (see mock-up in photo, right). This will protect the wall from any low and medium-impacts during the duration of the construction project.



Barrier protecting the memorial wall

A fire-retardant Perspex frame will be mounted in front of the wall for protection. A full-height version of the frame (below, centre and right) will be placed along both sides of the wall for the duration of the works.



Who can I contact if I have questions or concerns?

If you would like an opportunity to speak to the Notting Dale Heat Network team in person, or would like to undertake a site visit and have your questions and concerns addressed onsite, please contact **Linda Fenelon, Senior Resident Engagement Manager** on Linda.Fenelon@rbkc.gov.uk

Alternatively, please contact **James Caspell, Neighbourhood Director** at James.Caspell@rbkc.gov.uk

Would you like to keep up with news on the Lancaster West Estate? Simply scan the QR code below and follow the link.

